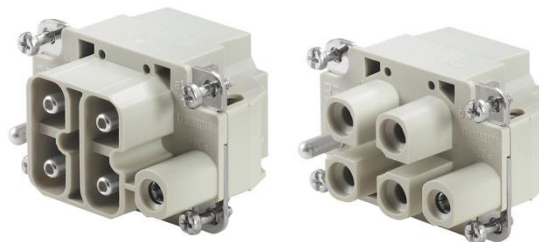


10407910	<b>DATA SHEET</b>
Valid from: 13.01.2026	<b>POWER H-S 4 + PE SAS / BAS</b>

## Description

- Power inserts
- Fast and easy assembly
- Very high current transfer
- Lower space requirement
- Axial screw termination for assembly without special tool



## General Characteristics

Series	H-S 4 + PE
Version	Male (10407910)/Female (10407900)
Number of Contacts	4 + PE
Power-Termination	Axial screw termination: 2,5 - 10 mm <sup>2</sup> (AWG 14 - 8) Tightening torque: 1,1 Nm - 1,7 Nm
PE-Termination	Screw termination: 2,5 - 6 mm <sup>2</sup> (AWG 14 - 11) Tightening torque: 0,5 Nm - 0,8 Nm
Temperature Range	-40°C to +125°C

## Mechanical Characteristics

Cycle of mechanical operation	500
-------------------------------	-----

## Electrical Characteristics

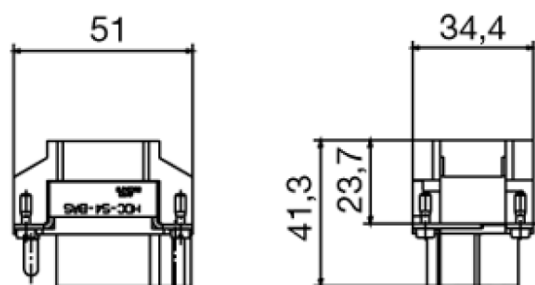
Rated Voltage	1000 V
Rated Voltage acc. to UL/CSA	600 V
Rated Impulse Voltage	8 kV
Rated Current, IEC	40 A
Rated Current acc. To UL/CSA	40 A
Contact Resistance	< 1 mOhm
Degree of Soiling	3

## Material/Surface

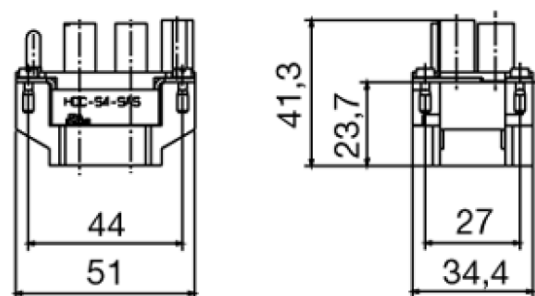
Insulation body	PC glass -fibre reinforced
Contacts	Brass
Contact surface	Silver passivated

10407910	<b>DATA SHEET</b>
Valid from: 13.01.2026	<b>POWER H-S 4 + PE SAS / BAS</b>

## Technical Drawing

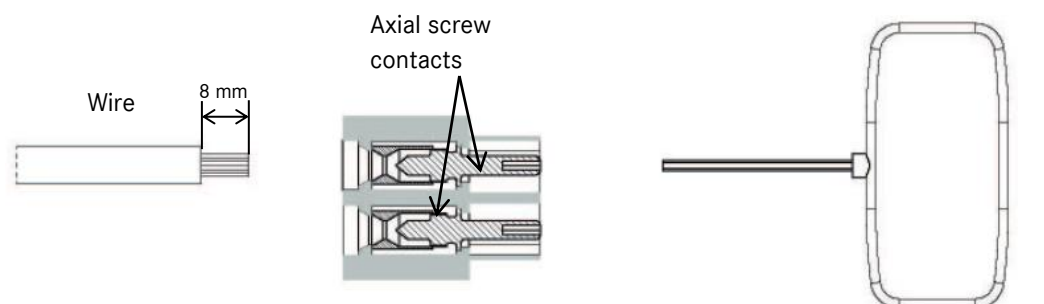


Male



Female

## Mounting instructions



1. Strip the wire, stripping length: 8 mm. Please do not twist the stranded wire.
2. Push the stranded wire into the contact chamber until the insulation is flush with the contact.
3. On the mating face side, insert the hex key (Art. No. 44424028) into the contact
4. When tightening the clamping nut, please hold the strands in position.

**Tightening torque between 1.1 Nm and 1.7 Nm.**

10407910	<b>DATA SHEET</b>
Valid from: 13.01.2026	<b>POWER H-S 4 + PE SAS / BAS</b>



Wide clamping range



Industrial machinery and plant engineering



Temperature-resistant

### Info

Very high current transfer in a small space  
Axial screw termination for assembly without special tool

### Application range

Mechanical engineering  
Plant engineering  
Renewable energy

### Remark

Photographs are not to scale and do not represent detailed images of the respective products.

This article 10407910 is a Weidmueller product and labeled with the part number HDC-S4-SAS.

This article 10407900 is a Weidmueller product and labeled with the part number HDC-S4-BAS.