
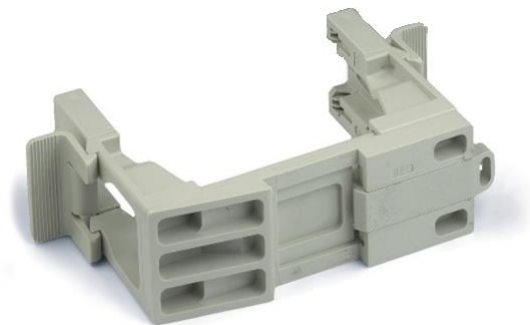


10027810	DATA SHEET	
Valid from: 30.04.2025	EPIC® H-B Q+E MOUNTING SYSTEM BOTTOM PART	

Description

- For mounting inserts on top-hat rails according to DIN EN 60715



General Characteristics


Configuration	Bottom part
Series	Variable from H-B 6 to H-B 24
Temperature Range	-40°C to +100°C, short-term up to +125°C

Mechanical Characteristics

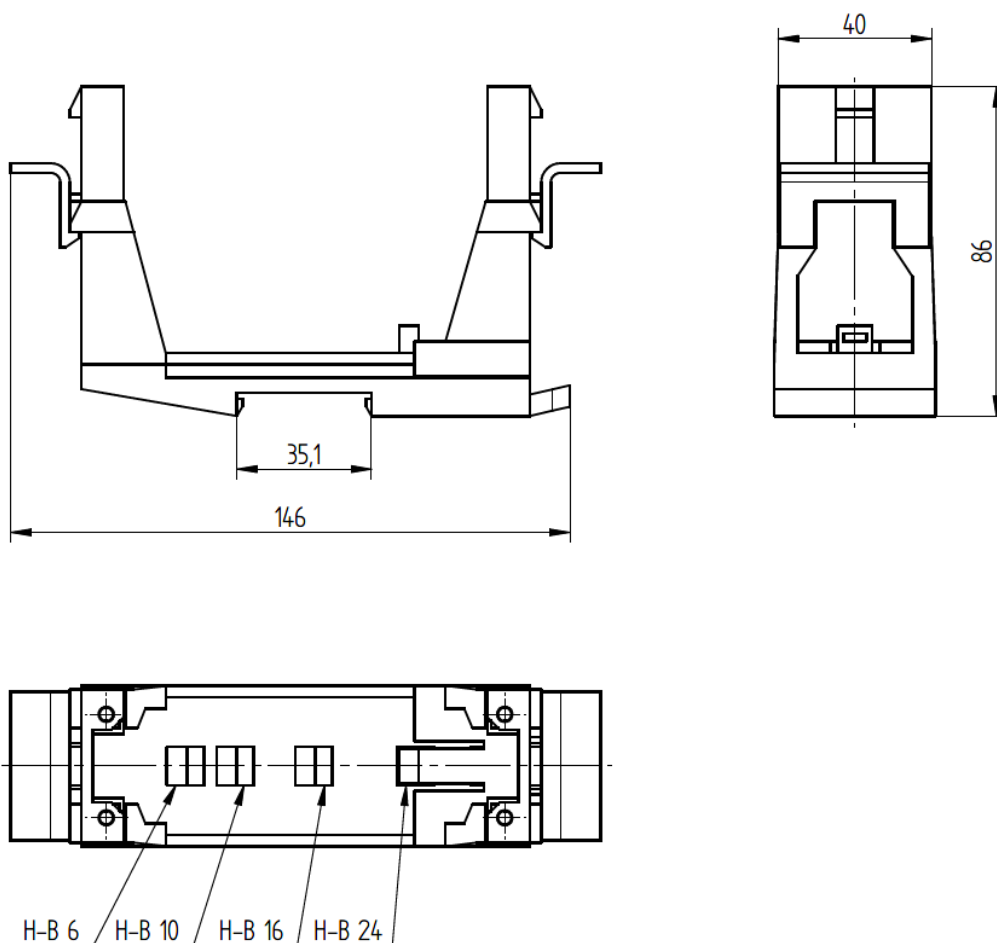
Cycle of mechanical operation	max. 50
-------------------------------	---------

Materials and Surfaces

Material	Polycarbonate
Flammability Class according to UL 94	V0

10027810	DATA SHEET	
Valid from: 30.04.2025	EPIC® H-B Q+E MOUNTING SYSTEM BOTTOM PART	

Technical Drawings



Remark

Photographs are not to scale and do not represent detailed images of the respective products.

Creator: TODV1/BU EPIC Released: MAJU2/ BU EPIC	Document: DB10027810EN Version: 00	Page 2 of 2
--	---------------------------------------	-------------