

MVK I/O COMPACT MODULE, METAL

Profibus DP, 4 analog Out / 8 multif. channels

Art.No.: 55292

Weight: 0.822 kg

Country of origin: DE

Model designation: MVK-MP AO4 (I) DIO4 (DIO4)

Digital inputs/outputs

DIO4 DIO4 AO4

PROFIBUS 12 Mbit/s; M12, B-coded

7/8", 5-pole, 2x max. 9 A

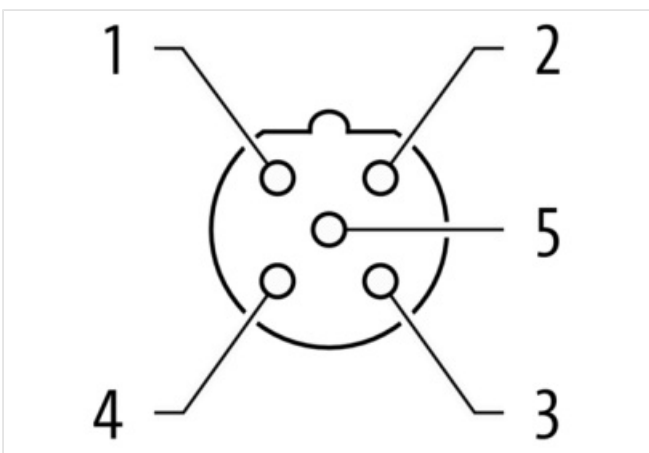
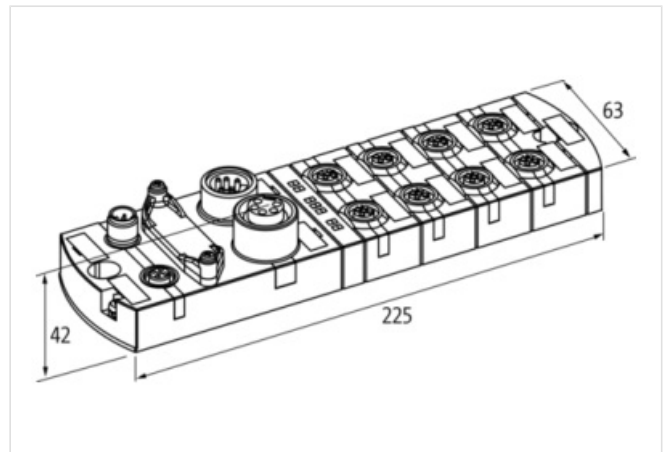
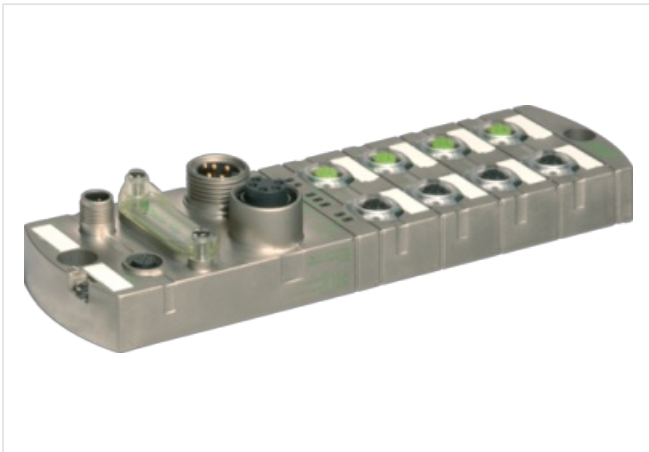
M12, 5-pole, A-coded

Connection cables are in the online shop under "Connection Technology".

Housing fully potted.

[Link to Product](#)

Illustration



Product may differ from Image



Commercial data

URL Webshop	https://shop.murrelektronik.com/55292
GTIN	4048879051590
Customs tariff number	85389099
ECLASS-6.0	27242604
ECLASS-6.1	27242602
ECLASS-7.0	27242602
ECLASS-7.1	27242602
ECLASS-8.0	27242602
ECLASS-8.1	27242602
ECLASS-9.0	27242602
ECLASS-9.1	27242602
ECLASS-10.0.1	27242602
ECLASS-10.1	27242602
ECLASS-11.0	27242602
ECLASS-11.1	27242602
ECLASS-12.0	27242602
ECLASS-13.0	27242602
ECLASS-14.0	27242602
ETIM-5.0	EC001597
ETIM-6.0	EC001597
ETIM-7.0	EC001597
ETIM-8.0	EC001597
customs tariff number	85389099
EAN	4048879051590
Packaging unit	1
Electrical data Supply	
Norm operating voltage	IEC/EN 61131-2
Operating voltage US DC	24 V
Total current US max.	9 A
Operating voltage UA DC	24 V
Total current UA max.	9 A
Electrical data Input	
Sensor current US per input max.	0,2 A
Short-circuit protected	Yes
Overload resistant	Yes
Type input	for 3-wire sensors or mechanical switches, PNP
Electrical data Output	
Output current per pin max.	1,6 A
Overload resistant	Yes
Short-circuit protected	Yes
Conversion time analog output	1 ms
Lamp load	10 W
Industrial communication Bus data	
Address setting type	Rotary switch
Address range min.	1
Address range max.	99
Diagnostics	
Actuator warning	per channel via LED and BUS
Short circuit diagnosis	Yes
Overload diagnosis	Yes
Cable break	per port
Diagnostic	No voltage, Under voltage

Diagnostic via BUS	per module and channel
Diagnostic via LED	per module and channel
LED display	Ethernet connection/data traffic

Device protection | Electrical

Degree of protection (EN IEC 60529)	IP67
-------------------------------------	------

Mechanical data | Mounting data

Height	42 mm
Width	63 mm
Depth	225 mm
Suitable for mounting type	2-hole screw mounting

Environmental characteristics | Climatic

Operating temperature min.	0 °C
Operating temperature max.	55 °C
Ambient temperature (storage, transport)	-20 °C ... 70 °C

Connection types

Connection type 1	0-3
Connection type 2	4-7
Connection type 3	Bus In
Connection type 4	Bus Out
Connection type 5	Power In
Connection type 6	Power Out