

MASI68 I/O EXTENSION MODULE

4 digital inputs

Art.No.: 56443

Weight: 0.162 kg

Country of origin: CZ

Model designation: MASI68 DI4/0,19A/AUX Y AB E 4xM12

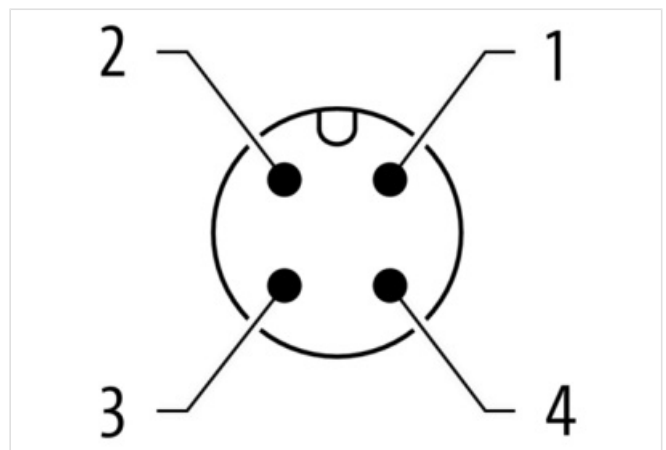
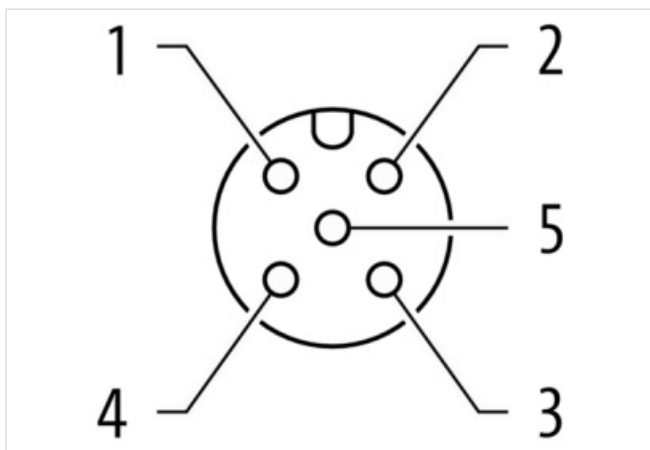
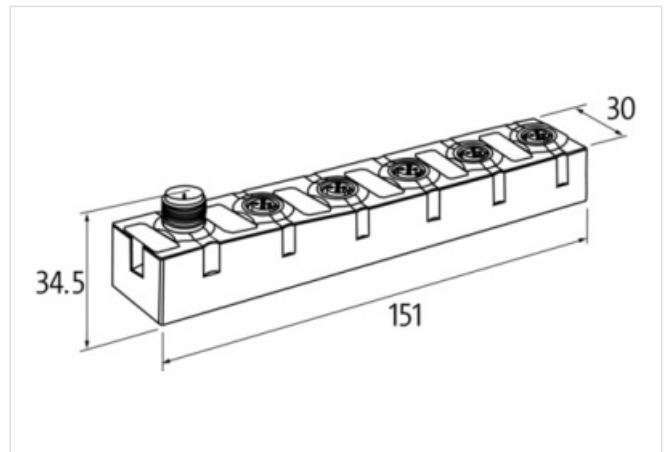
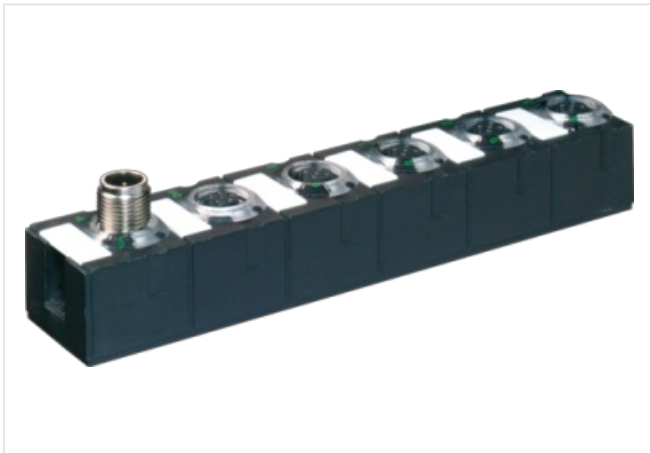
Expansion module

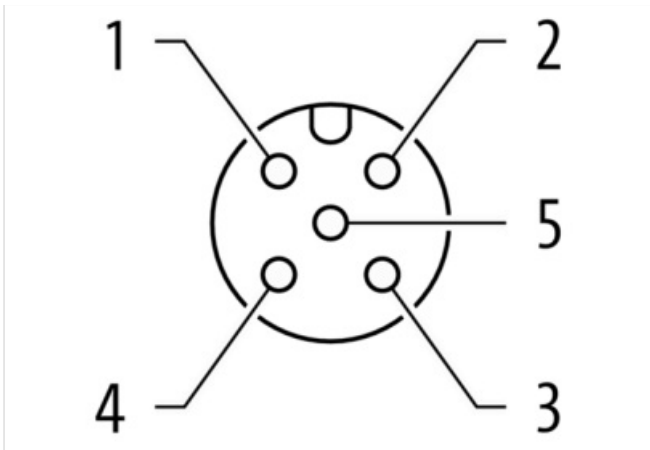
DI4 - 0.19 A (E) - 4x M12 (AB) (Y) (AUX)

Y-wiring

Connection cables are in the online shop under "Connection Technology".

Housing fully potted.

[Link to Product](#)**Illustration**



Product may differ from Image

**Commercial data**

URL Webshop	https://shop.murrelektronik.com/56443
GTIN	4048879332477
Customs tariff number	85176200
ECLASS-6.0	27242604
ECLASS-7.0	27242604
ECLASS-8.0	27242604
ECLASS-9.0	27242604
ETIM-5.0	EC001599
ETIM-6.0	EC001599
ETIM-7.0	EC001599
ETIM-8.0	EC001599
customs tariff number	85176200
EAN	4048879332477
Packaging unit	1

Electrical data | Supply

Bus voltage AS-Interface DC min.	26,5 V
Bus voltage AS-Interface DC max.	31,6 V
Current consumption AS-i port max.	250 mA

Electrical data | Input

Current carrying capacity max.	0,19 A
Short-circuit protected	Yes
Overload resistant	Yes
Type input	for 3-wire sensors or mechanical switches, PNP

Industrial communication | Bus data

Address setting type	M12 connection and programming device, Master
Slave address range	(0), 1 A...31 A, 1 B...31 B

Industrial communication | AS-Interface

Profile (IO.ID.ID2)	S-0.A.2
---------------------	---------

Diagnostics

Diagnostic	No voltage
Diagnostic via LED	per module

LED display

Ethernet connection/data traffic

Device protection | Electrical

Degree of protection (EN IEC 60529) IP68

Mechanical data | Mounting data

Height 151 mm

Width 30 mm

Depth 34,5 mm

Mounting method screwed

Environmental characteristics | Climatic

Operating temperature min. -20 °C

Operating temperature max. 60 °C

Ambient temperature (storage, transport) -20 °C ... 70 °C

Connection type 3

Connection type 1 A C

Connection type 2 AUX

Connection type 3 B D

Family construction form M12

No. of poles 5

Coding A

Gender female

Color contact carrier black

PIN 1 Usens +

PIN 2 DI

PIN 3 Usens -

PIN 4 DI

PIN 5 n.c.

Family construction form M12

No. of poles 4

Coding A

Gender male

Color contact carrier black

PIN 1 AS-i +

PIN 2 0 V AUX POWER

PIN 3 AS-i -

PIN 4 24 V DC AUX POWER

Family construction form M12

No. of poles 5

Coding A

Gender female

Color contact carrier black

PIN 1 Usens +

PIN 2 n.c.

PIN 3 Usens -

PIN 4 DI

PIN 5 n.c.