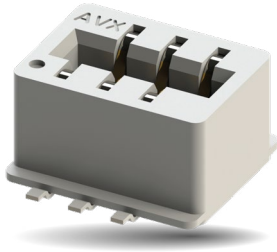


DUAL ROW INVERTED THRU BOARD CARD EDGE: 9159-600



General Information



KYOCERA AVX Interconnect continues to develop unique connectors to fill the gap in the market. The latest addition to KYOCERA AVX's expanding line of one-piece card edge connectors is the 4p-12p Dual Row Inverted version 9159-600, which is an extension of the popular single row version 9159-500. This new configuration with staggered dual row contacts allows double the number of positions in a similar size connector.

This small connector is packed with several key features that provide significant functionality in a wide range of applications. The proven contact system is gold-plated for improved reliability, signal integrity and up to 2A/contact current rating. The connector is designed to mate with 1.6mm thick printed circuit boards with gold plated pads.

APPLICATIONS

Provides a one piece connector solution for perpendicular PCB mating in applications:

- Automotive
- Industrial
- Lighting

Product Specification: Refer to 201-01-226

Application Notes: Refer to 201-01-227.

FEATURES AND BENEFITS

- Up to 2 Amps per contact current rating meets robust application requirements
- Doubled number of positions with dual row solution
- Gold plated BeCu contact system for high reliability in harsh environments
- Low profile thru board design does not interfere with LEDs.
- Halogen-Free

ELECTRICAL

- Current Rating: See Table Below
- Voltage Rating: 300 VAC (RMS) or DC equivalent

ENVIRONMENTAL

- Operating Temperature: -40°C to +125°C
- Storage Temperature: -40°C to +70°C

MECHANICAL

- Insulator Material: High temperature Nylon UL94V-0 rated
- Contact Material: Beryllium Copper
- Durability: 10 Cycles
- Plating: Gold / Tin over Nickel

HOW TO ORDER

00 Prefix **9159** Series **0XX** No. of Ways **60X** Dual Row Inverted Thru Board Card Edge
 601 = with Kapton Tape 603 = without Kapton Tape
9 Insulator Color 9 = White (Standard)
0 Keying 0 = Without keying
6 Plating Options 6 = Gold plating on nose with Tin on Tails

Code	Size	Contacts
004	2x2	4
006	2x3	6
008	2x4	8
010	2x5	10
012	2x6	12



Safety Standards: UL 1977-File #E90723, CSA C22.2 NO. 182.3

Current Rating

No. of Positions	Current
4	2A
6	1.75A
8	1.75A
10	1.5A
12	1.25A

