



Load disconnector 3LD3, Iu 63 A Main switch 3-pole + N Rated operating capacity at AC-23 A at 400V 22.0 kW Front plate mounting Basic switch with Central hole mounting 22.5mm Toggle drive red / yellow 48x48 mm

| Model   |                                     |
|---|-------------------------------------|
| product brand name  | SENTRON                             |
| product designation   | Switch disconnector                 |
| design of the product   | EMERGENCY-STOP switch               |
| display version for switch position indicator manual operation                      | 1 ON - 0 OFF                        |
| type of switch  | front mounted                       |
| design of the actuating element   | selector switch                     |
| color of the actuating element  | red                                 |
| design of handle  | knob-operated mechanism, red/yellow |
| type of the driving mechanism motor drive   | No                                  |
| General technical data  |                                     |
| number of poles   | 4                                   |
| number of poles note  | 4                                   |
| mechanical service life (operating cycles) typical                                  | 100 000                             |
| electrical endurance (operating cycles)   |                                     |
| • at AC-23 A at 690 V   | 6 000                               |
| operating frequency maximum   | 50 1/h                              |
| degree of pollution   | 3                                   |
| Voltage   |                                     |
| insulation voltage rated value  | 690 V                               |
| surge voltage resistance rated value  | 6 kV                                |
| operating voltage   |                                     |
| • at AC rated value   | 690 V                               |
| operating frequency rated value   |                                     |
| • minimum   | 50 Hz                               |
| • maximum   | 60 Hz                               |
| Protection class  |                                     |
| protection class IP   | IP65                                |
| degree of protection NEMA rating  | 1, 3R, 4X, 12                       |
| protection class IP on the front  | IP65                                |
| Dissipation   |                                     |
| power loss [W] for rated value of the current at AC in hot operating state per pole | 4.5 W                               |
| Main circuit  |                                     |
| operational current   |                                     |
| • at AC-21 at 690 V rated value   | 63 A                                |
| • at AC-21 A at 240 V rated value   | 63 A                                |
| • at AC-21 A at 400 V rated value   | 63 A                                |

|   |                                |
|---|--------------------------------|
| <ul style="list-style-type: none"> <li>• at AC-21 A at 440 V rated value</li> </ul>                               | 63 A                           |
| <ul style="list-style-type: none"> <li>• at AC-23 A at 400 V rated value</li> </ul>                               | 43 A                           |
| <b>operating power</b>  |                                |
| <ul style="list-style-type: none"> <li>• at AC-23 A at 240 V rated value</li> </ul>                               | 11 kW                          |
| <ul style="list-style-type: none"> <li>• at AC-23 A at 400 V rated value</li> </ul>                               | 22 kW                          |
| <ul style="list-style-type: none"> <li>• at AC-23 A at 440 V rated value</li> </ul>                               | 22 kW                          |
| <ul style="list-style-type: none"> <li>• at AC-23 A at 690 V rated value</li> </ul>                               | 19 kW                          |
| <ul style="list-style-type: none"> <li>• at AC-3 at 240 V rated value</li> </ul>                                  | 11 kW                          |
| <ul style="list-style-type: none"> <li>• at AC-3 at 400 V rated value</li> </ul>                                  | 19 kW                          |
| <ul style="list-style-type: none"> <li>• at AC-3 at 690 V rated value</li> </ul>                                  | 15 kW                          |
| <b>Auxiliary circuit</b>  |                                |
| number of CO contacts for auxiliary contacts  | 0                              |
| number of NC contacts for auxiliary contacts  | 0                              |
| number of NO contacts for auxiliary contacts  | 0                              |
| operating voltage of auxiliary contacts at AC maximum   | 500 V                          |
| continuous current of the auxiliary contact rated value   | 10 A                           |
| insulation voltage of the auxiliary switch rated value  | 500 V                          |
| <b>Suitability</b>  |                                |
| suitability for use main switch   | Yes                            |
| suitability for use switch disconnecter   | Yes                            |
| suitability for use EMERGENCY OFF switch  | Yes                            |
| suitability for use safety switch   | Yes                            |
| suitability for use maintenance/repair switch   | Yes                            |
| <b>Product details</b>  |                                |
| special product feature   | Can be locked in zero position |
| product feature can be locked into OFF position   | Yes                            |
| <b>Accessories</b>  |                                |
| product extension optional  |                                |
| <ul style="list-style-type: none"> <li>• motor drive</li> </ul>   | No                             |
| <ul style="list-style-type: none"> <li>• voltage trigger</li> </ul>   | No                             |
| number of connectable NC contacts for auxiliary contacts attachable maximum                                       | 2                              |
| number of connectable NO contacts for auxiliary contacts attachable maximum                                       | 4                              |
| number of connectable CO contacts for auxiliary contacts attachable maximum                                       | 0                              |
| number of bracket locks maximum   | 2                              |
| hasp thickness of the bracket locks   | 4 ... 6 mm                     |
| <b>Short circuit</b>  |                                |
| conditional short-circuit current with line-side fuse protection  |                                |
| <ul style="list-style-type: none"> <li>• at 440 V by gG fuse rated value</li> </ul>                               | 10 kA                          |
| <ul style="list-style-type: none"> <li>• at 690 V by gG fuse rated value</li> </ul>                               | 6 kA                           |
| let-through current with closed switch  |                                |
| <ul style="list-style-type: none"> <li>• at 240 V for combination switch + gG fuse maximum</li> </ul>             | 6 kA                           |
| <ul style="list-style-type: none"> <li>• at 440 V for combination switch + gG fuse maximum</li> </ul>             | 6 kA                           |
| <ul style="list-style-type: none"> <li>• at 690 V for combination switch + gG fuse maximum permissible</li> </ul> | 6 kA                           |
| I <sup>2</sup> t value with closed switch   |                                |
| <ul style="list-style-type: none"> <li>• at 240 V for combination switch + gG fuse maximum</li> </ul>             | 21 kA <sup>2</sup> ·s          |
| <ul style="list-style-type: none"> <li>• at 440 V for combination switch + gG fuse maximum</li> </ul>             | 21 kA <sup>2</sup> ·s          |
| <ul style="list-style-type: none"> <li>• at 690 V for combination switch + gG fuse maximum</li> </ul>             | 21 kA <sup>2</sup> ·s          |
| design of the fuse link   |                                |
| <ul style="list-style-type: none"> <li>• for short-circuit protection of the main circuit required</li> </ul>     | fuse gL/gG: 63 A               |
| <ul style="list-style-type: none"> <li>• for short-circuit protection of the auxiliary switch required</li> </ul> | fuse gL/gG: 10 A               |
| operational current of upstream fuse rated value  | 63 A                           |
| <b>according UL</b>   |                                |
| operational current at AC according to UL 508/UL 60947-4-1 rated value  | 63 A                           |
| operating voltage at AC at 50/60 Hz according to UL 508/UL 60947-4-1 rated value                                  | 600 V                          |

|   |      |
|---|------|
| active power [hp] at AC at 480 V according to UL 508/UL 60947-4-1 rated value | 25   |
| active power [hp] at AC at 600 V according to UL 508/UL 60947-4-1 rated value | 30   |
| short-time withstand current (SCCR) at 600 V according to UL 508/UL 60947-4-1 | 5 kA |
| continuous current of upstream fuse according to UL rated value               | 50 A |
| type of fuse according to UL  | RK5  |

### Connections

|   |  |
|---|--|
| AWG number as coded connectable conductor cross section solid maximum |  |
| •   | 6  |
| •   | 14   |
| type of connectable conductor cross-sections for copper conductor     |  |
| • solid   | 1x (2.5 to 16 mm <sup>2</sup> )                            |
| • finely stranded with core end processing                            | 1x (2.5...16 mm <sup>2</sup> )                             |
| • stranded  | 1x (2.5 to 16 mm <sup>2</sup> )                            |
| type of connectable conductor cross-sections for auxiliary contacts   |  |
| • solid   | 2x (0.75 ... 2.5 mm <sup>2</sup> ), 1x 4 mm <sup>2</sup>   |
| • finely stranded with core end processing                            | 2x (0.75 ... 1.5 mm <sup>2</sup> ), 1x 2.5 mm <sup>2</sup> |
| • stranded  | 2x (0.75 ... 2.5 mm <sup>2</sup> ), 1x 4 mm <sup>2</sup>   |
| type of electrical connection   |  |
| • for main current circuit  | box terminal   |
| • for auxiliary contacts  | Box terminals  |

### Mechanical Design

|  |                                     |
|--|-------------------------------------|
| height                                   | 60 mm                               |
| width                                    | 49 mm                               |
| depth                                    | 114 mm                              |
| type of device                           | fixed mounting                      |
| fastening method                         | Built-in unit fixed-mounted version |
| fastening method                         |                                     |
| • 4-hole front mounting                  | No                                  |
| • front mounting with central attachment | Yes                                 |
| • rail mounting                          | No                                  |
| Net Weight                               | 244 g                               |

### Environmental conditions

|                                      |        |
|--------------------------------------|--------|
| ambient temperature during operation |        |
| • minimum                            | -25 °C |
| • maximum                            | 55 °C  |
| ambient temperature during storage   |        |
| • minimum                            | -25 °C |
| • maximum                            | 55 °C  |

### Approvals Certificates

|             |                          |
|-------------|--------------------------|
| Environment | General Product Approval |
|-------------|--------------------------|

[Environmental Confirmations](#)

[Environmental Confirmations](#)



[Confirmation](#)

|                          |       |
|--------------------------|-------|
| General Product Approval | other |
|--------------------------|-------|



[Confirmation](#)



### Further information

**Information on the packaging**

<https://support.industry.siemens.com/cs/ww/en/view/109813875>

**Information for data generation and storage**

<https://support.industry.siemens.com/cs/ww/en/view/109995012>

**Information- and Downloadcenter (Catalogs, Brochures,...)**

<https://www.siemens.com/lowvoltage/catalogs>

**Industry Mall (Online ordering system)**

<https://mall.industry.siemens.com/mall/en/en/Catalog/product?mlfb=3LD3450-0TL13>

**Service&Support (Manuals, Certificates, Characteristics, FAQs,...)**

<https://support.industry.siemens.com/cs/ww/en/ps/3LD3450-0TL13>

**Image database (product images, 2D dimension drawings, 3D models, device circuit diagrams, ...)**

[https://www.automation.siemens.com/bilddb/cax\\_en.aspx?mlfb=3LD3450-0TL13](https://www.automation.siemens.com/bilddb/cax_en.aspx?mlfb=3LD3450-0TL13)

**CAX-Online-Generator**

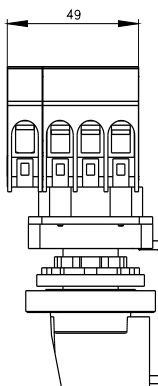
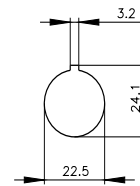
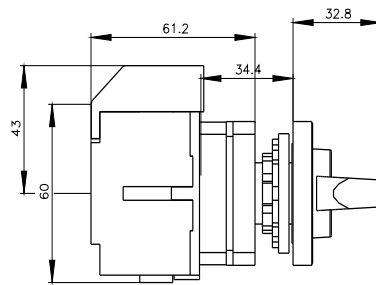
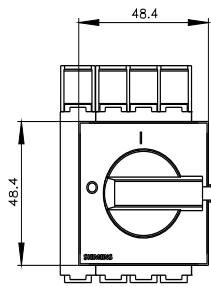
<https://www.siemens.com/cax>

**Tender specifications**

<https://www.siemens.com/specifications>

**Characteristic curves**

[https://curves.simaris.siemens.com/curves/<mmp\\_prod\\_noCOMP='HAUPT'></mmp\\_prod\\_no>](https://curves.simaris.siemens.com/curves/<mmp_prod_noCOMP='HAUPT'></mmp_prod_no>)



last modified:

10/14/2025

