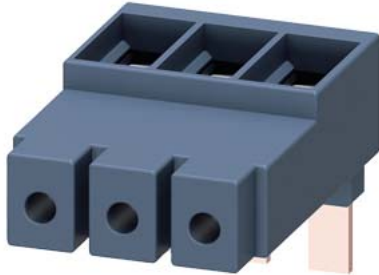


3-phase supply terminal Size S2 for 3-phase busbar connection from top



<b>product brand name</b>	SIRIUS
<b>product category</b>	Plugs, adapters and terminals
<b>product designation</b>	3-phase supply terminal
<b>design of the product</b>	Size S2
<b>product type designation</b>	3RV19
<b>General technical data</b>	
<b>certificate of suitability</b>	CE / UL / CSA / CCC
<b>size of the circuit-breaker</b>	S2
insulation voltage with degree of pollution 3 at AC rated value	690 V
protection class IP on the front according to IEC 60529	IP20
<b>Substance Prohibittance (Date)</b>	07/01/2006
<b>Net Weight</b>	0.12 kg
<b>ampacity maximum</b>	108 A
<b>Ambient conditions</b>	
<b>ambient temperature</b>	
• during operation	-20 ... +60 °C
• during storage	-50 ... +80 °C
<b>Electrical Safety</b>	
<b>protection class IP on the front according to IEC 60529</b>	IP20
<b>touch protection on the front according to IEC 60529</b>	finger-safe, for vertical contact from the front
<b>Installation/ mounting/ dimensions</b>	
<b>height</b>	59 mm
<b>width</b>	54 mm
<b>depth</b>	44 mm
<b>Connections/ Terminals</b>	
type of electrical connection for main current circuit	screw-type terminals
<b>type of connectable conductor cross-sections</b>	
• for main contacts	
— solid	1x (10 ... 50 mm <sup>2</sup> )
— stranded	1x (10 ... 50 mm <sup>2</sup> )
• for AWG cables for main contacts	1x (8 ... 0)
<b>connectable conductor cross-section for main contacts</b>	
• solid or stranded	10 ... 50 mm <sup>2</sup>
• stranded	10 ... 50 mm <sup>2</sup>
<b>AWG number as coded connectable conductor cross section for main contacts</b>	8 ... 0
<b>Approvals Certificates</b>	
<b>Environment</b>	General Product Approval
	Maritime application

Maritime application | other



[Confirmation](#)

[Miscellaneous](#)

### Further information

**Information on the packaging**

<https://support.industry.siemens.com/cs/ww/en/view/109813875>

**Information for data generation and storage**

<https://support.industry.siemens.com/cs/ww/en/view/109995012>

**Information- and Downloadcenter (Catalogs, Brochures,...)**

<https://www.siemens.com/ic10>

**Industry Mall (Online ordering system)**

<https://mall.industry.siemens.com/mall/en/en/Catalog/product?mlfb=3RV1935-5A>

**Cax online generator**

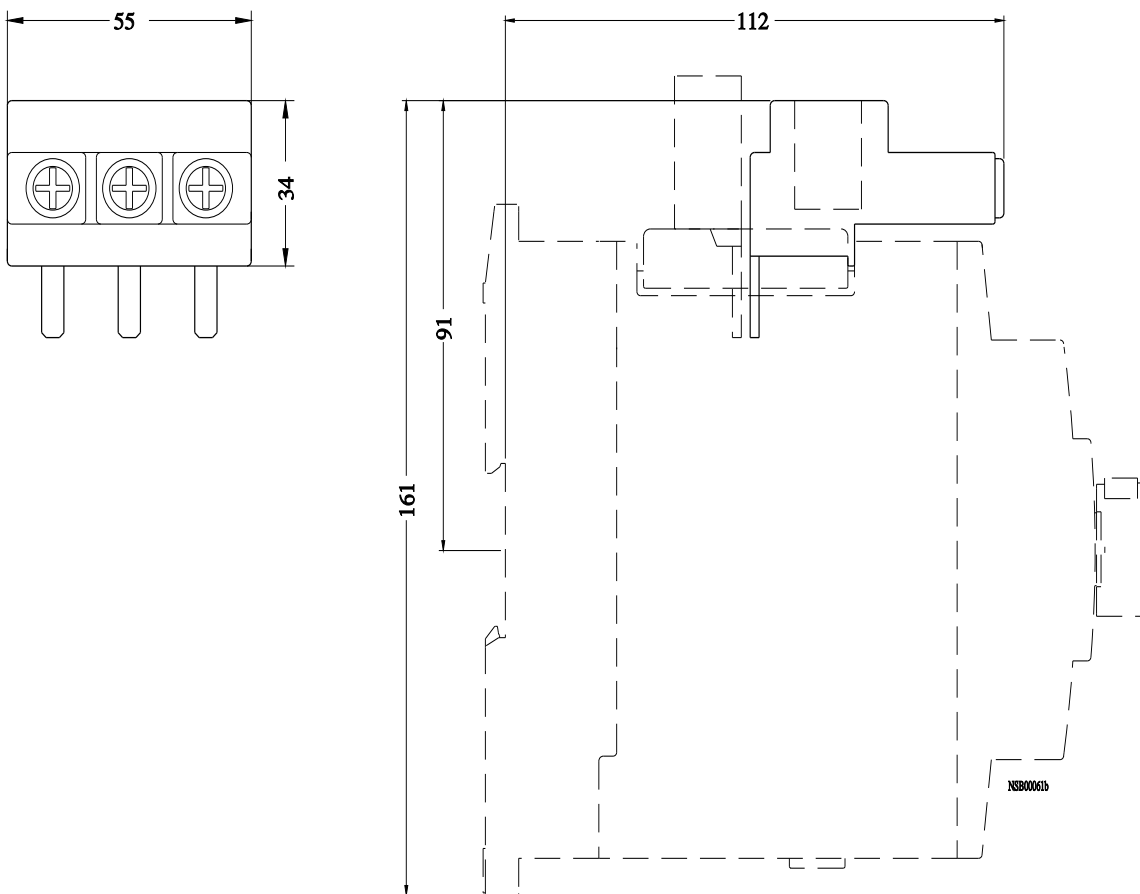
<https://support.automation.siemens.com/WW/CAXorder/default.aspx?lang=en&mlfb=3RV1935-5A>

**Service&Support (Manuals, Certificates, Characteristics, FAQs,...)**

<https://support.industry.siemens.com/cs/ww/en/ps/3RV1935-5A>

**Image database (product images, 2D dimension drawings, 3D models, device circuit diagrams, EPLAN macros, ...)**

[https://www.automation.siemens.com/bilddb/cax\\_de.aspx?mlfb=3RV1935-5A&lang=en](https://www.automation.siemens.com/bilddb/cax_de.aspx?mlfb=3RV1935-5A&lang=en)



last modified:

4/2/2025