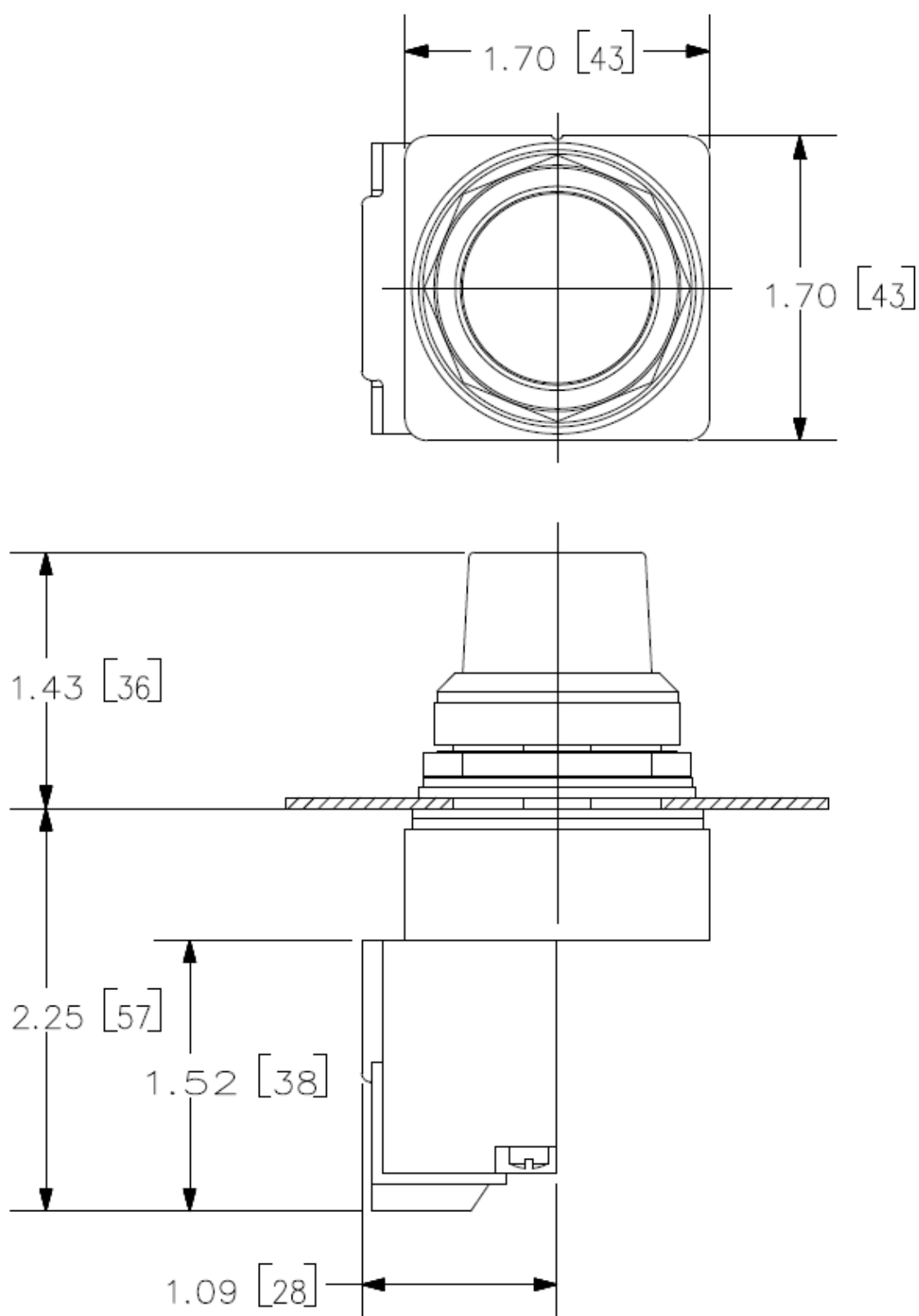




30mm BlackMax, Epoxy Coated Corrosion Resistant Complete Metal Unit Illuminated Indicator Light Transformer type, 600V AC LED Lamp, BA9s Glass Lens, Amber UL Listed, CSA Certified NEMA 1,3,3R,4,4X,12,13 & Automotive Standards

|   |   |
|---|---|
| product brand name  | Siemens Pilot Devices   |
| design of the product                                     | Complete Unit, Round  |
| <b>Enclosure</b>  |   |
| number of command points                                  | 1   |
| delivery state as a kit                                   | No  |
| <b>Actuator</b>   |   |
| design of the actuating element                           | Indicator Light   |
| product extension optional light source                   | Yes   |
| color of the actuating element                            | amber   |
| material of the actuating element                         | glass   |
| shape of the actuating element                            | Concentric rings  |
| <b>Front ring</b>   |   |
| product component front ring                              | Yes   |
| design of the front ring                                  | Standard  |
| material of the front ring                                | metal   |
| color of the front ring                                   | black   |
| <b>Holder</b>   |   |
| material of the holder                                    | metal   |
| <b>Contact block/ lampholder</b>                          |   |
| socket design   | BA 9s, with single LED lamp                                       |
| number of lampholders                                     | 1   |
| <b>Display</b>  |   |
| number of LED modules                                     | 1   |
| <b>General technical data</b>                             |   |
| product component   |   |
| • lamp transformer  | Yes   |
| • light source  | Yes   |
| degree of pollution                                       | 1   |
| type of voltage   |   |
| • of the operating voltage                                | AC  |
| • of the input voltage                                    | AC  |
| surge voltage resistance rated value                      | 4 kV  |
| protection class IP                                       | IP66  |
| protection class IP of the terminal                       | IP20  |
| vibration resistance according to IEC 60068-2-6           | 0 ... 2000 Hz, 1.52 mm displacement (peak-to-peak) max./ 10g max. |
| mechanical service life (operating cycles) typical        | 50  |
| Net Weight  | 0.18 kg   |
| <b>Supply voltage</b>                                     |   |
| type of voltage of the supply voltage of the light source | AC  |

|  |   |
|--|---|
| supply voltage of the light source at AC at 60 Hz rated value  | 6 V   |
| <b>Inputs/ Outputs</b>   |   |
| output voltage 1 of the lamp transformer rated value   | 6 V   |
| <b>Connections/ Terminals</b>  |   |
| type of electrical connection  | screw terminal  |
| • of modules and accessories   | screw-type terminals                                  |
| type of connectable conductor cross-sections for AWG cables for auxiliary contacts   | 1x (18 ... 12), 2x (18 ... 16), 2x (16 ... 14), 2x 12 |
| tightening torque of the screws in the bracket maximum   | 20 N·m  |
| tightening torque [lbf·in] with screw-type terminals   | 8 ... 8 lbf·in  |
| <b>Lamp</b>  |   |
| type of light source   | Single LED  |
| color of the light source  | yellow  |
| <b>Electrical Safety</b>   |   |
| touch protection against electrical shock  | finger safe   |
| <b>Ambient conditions</b>  |   |
| ambient temperature  |   |
| • during operation   | -35 ... +70 °C  |
| • during storage   | -40 ... +85 °C  |
| <b>Installation/ mounting/ dimensions</b>  |   |
| fastening method   |   |
| • of modules and accessories   | screw-mounting  |
| shape of the installation opening  | round   |
| <b>Further information</b>   |   |
| Information on the packaging<br><a href="https://support.industry.siemens.com/cs/ww/en/view/109813875">https://support.industry.siemens.com/cs/ww/en/view/109813875</a><br>Information for data generation and storage<br><a href="https://support.industry.siemens.com/cs/ww/en/view/109995012">https://support.industry.siemens.com/cs/ww/en/view/109995012</a><br>Information- and Downloadcenter (Catalogs, Brochures,...)<br><a href="https://www.siemens.com/ic10">https://www.siemens.com/ic10</a><br>Industry Mall (Online ordering system)<br><a href="https://mall.industry.siemens.com/mall/en/en/Catalog/product?mlfb=US2:52BL5K9XB">https://mall.industry.siemens.com/mall/en/en/Catalog/product?mlfb=US2:52BL5K9XB</a><br>Cax online generator<br><a href="https://support.automation.siemens.com/WW/CAXorder/default.aspx?lang=en&amp;mlfb=US2:52BL5K9XB">https://support.automation.siemens.com/WW/CAXorder/default.aspx?lang=en&amp;mlfb=US2:52BL5K9XB</a><br>Service&Support (Manuals, Certificates, Characteristics, FAQs,...)<br><a href="https://support.industry.siemens.com/cs/ww/en/ps/US2:52BL5K9XB">https://support.industry.siemens.com/cs/ww/en/ps/US2:52BL5K9XB</a><br>Image database (product images, 2D dimension drawings, 3D models, device circuit diagrams, EPLAN macros, ...)<br><a href="https://www.automation.siemens.com/bilddb/cax_de.aspx?mlfb=US2:52BL5K9XB&amp;lang=en">https://www.automation.siemens.com/bilddb/cax_de.aspx?mlfb=US2:52BL5K9XB&amp;lang=en</a> |   |



last modified:

10/23/2025 