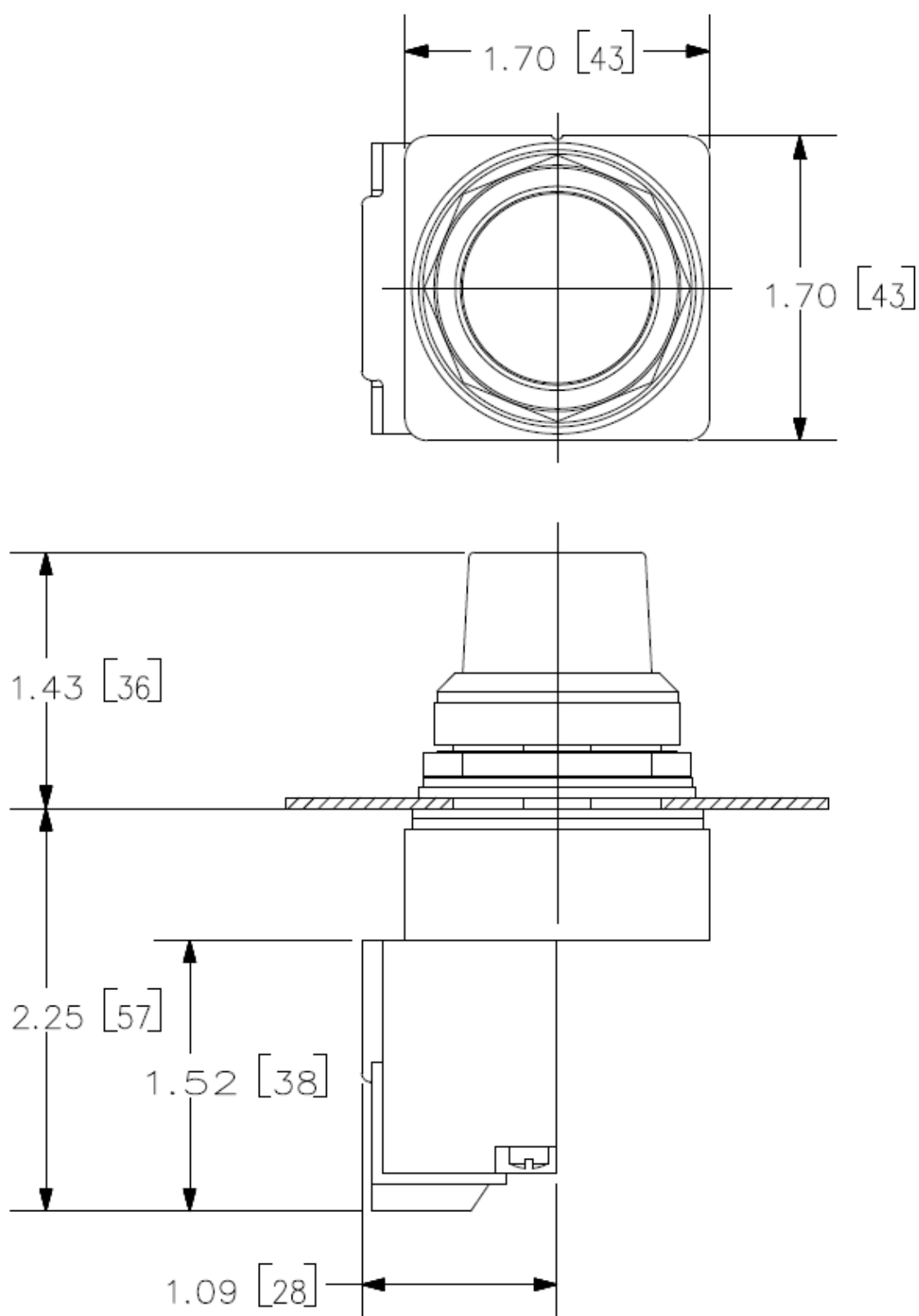




30mm BlackMax, Epoxy Coated Corrosion Resistant Complete Metal Unit
Illuminated Indicator Light Full Voltage type, 120V AC/DC LED Lamp, BA9s Glass
Lens, Clear UL Listed, CSA Certified NEMA 1,3,3R,4,4X,12,13 & Automotive
Standards

| | |
|---|---|
| product brand name | Siemens Pilot Devices |
| design of the product | Complete Unit, Round |
| Enclosure | |
| number of command points | 1 |
| delivery state as a kit | No |
| Actuator | |
| design of the actuating element | Indicator Light |
| product extension optional light source | Yes |
| color of the actuating element | clear |
| material of the actuating element | glass |
| shape of the actuating element | Concentric rings |
| Front ring | |
| product component front ring | Yes |
| design of the front ring | Standard |
| material of the front ring | metal |
| color of the front ring | black |
| Holder | |
| material of the holder | metal |
| Contact block/ lampholder | |
| socket design | BA 9s, with single LED lamp |
| number of lampholders | 1 |
| Display | |
| number of LED modules | 1 |
| General technical data | |
| product component | |
| • lamp transformer | No |
| • light source | Yes |
| degree of pollution | 1 |
| type of voltage | |
| • of the operating voltage | AC/DC |
| • of the input voltage | AC/DC |
| surge voltage resistance rated value | 4 kV |
| protection class IP | IP66 |
| protection class IP of the terminal | IP20 |
| vibration resistance according to IEC 60068-2-6 | 0 ... 2000 Hz, 1.52 mm displacement (peak-to-peak) max./ 10g max. |
| mechanical service life (operating cycles) typical | 50 |
| Net Weight | 0.18 kg |
| Supply voltage | |
| type of voltage of the supply voltage of the light source | AC/DC |

| | |
|---|---|
| supply voltage of the light source at AC at 60 Hz rated value | 120 V |
| • | |
| supply voltage of the light source at DC rated value | 120 V |
| • | |
| Connections/ Terminals | |
| type of electrical connection | screw terminal |
| • of modules and accessories | screw-type terminals |
| type of connectable conductor cross-sections for AWG cables for auxiliary contacts | 1x (18 ... 12), 2x (18 ... 16), 2x (16 ... 14), 2x 12 |
| tightening torque of the screws in the bracket maximum | 20 N·m |
| tightening torque [lbf·in] with screw-type terminals | 8 ... 8 lbf·in |
| Lamp | |
| type of light source | Single LED |
| color of the light source | white |
| Electrical Safety | |
| touch protection against electrical shock | finger safe |
| Ambient conditions | |
| ambient temperature | |
| • during operation | -35 ... +70 °C |
| • during storage | -40 ... +85 °C |
| Installation/ mounting/ dimensions | |
| fastening method | |
| • of modules and accessories | screw-mounting |
| shape of the installation opening | round |
| Further information | |
| Information on the packaging https://support.industry.siemens.com/cs/ww/en/view/109813875 | |
| Information for data generation and storage https://support.industry.siemens.com/cs/ww/en/view/109995012 | |
| Information- and Downloadcenter (Catalogs, Brochures,...) https://www.siemens.com/ic10 | |
| Industry Mall (Online ordering system) https://mall.industry.siemens.com/mall/en/en/Catalog/product?mlfb=US2:52BL5EAXB | |
| Cax online generator https://support.automation.siemens.com/WW/CAXorder/default.aspx?lang=en&mlfb=US2:52BL5EAXB | |
| Service&Support (Manuals, Certificates, Characteristics, FAQs,...) https://support.industry.siemens.com/cs/ww/en/ps/US2:52BL5EAXB | |
| Image database (product images, 2D dimension drawings, 3D models, device circuit diagrams, EPLAN macros, ...) https://www.automation.siemens.com/bilddb/cax_de.aspx?mlfb=US2:52BL5EAXB&lang=en | |



last modified:

10/23/2025 