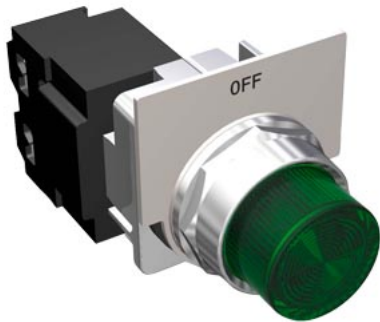


PILOT LITE,"FK" GREEN "OFF" W/AUX 120V



product brand name	Enclosed Control Product Accessories
design of the product	30 mm Green OFF Pilot Light, 120VAC
product type designation	Pilot light
special product feature	Transformer type
<b>General technical data</b>	
weight [lb]	0.55 lb
Height x Width x Depth [in]	2 × 1.7 × 3.5 in
touch protection against electrical shock	finger-safe
ambient temperature [°F]	
• during storage	-40 ... +185 °F
• during operation	-31 ... +158 °F
ambient temperature	
• during storage	-40 ... +85 °C
• during operation	-35 ... +70 °C
country of origin	Mexico
material / of the front ring	Metal with chrome plating
accessories / included	Wires
control voltage / at AC / rated value	108 ... 132 V
<b>Lamp</b>	
number of lampholders	1
number of indicator lights	1
type of light source	Incandescent
<b>Lens</b>	
color / of the cover cap	Green
model of the lens	round
material / of the lens	Plastic
<b>Legend</b>	
material	Brushed aluminum
marking / of inscription plate	OFF
color / of inscription plate	Aluminum foreground / Black background
<b>Mounting/wiring</b>	
fastening method	rear mounting
type of electrical connection	screw terminal
tightening torque [lbf-in] / with screw-type terminals	7 ... 9 lbf-in
type of connectable conductor cross-sections / for AWG cables / for control connection / with screw-type terminals / single or multi-stranded	2x (18 ... 12 AWG)
temperature / of the conductor / for control connection / with screw-type terminals / maximum permissible	75 °C
material / of the conductor	CU

## Certificates/ approvals

certificate of suitability

cULus

## Further information

Industry Mall (Online ordering system)

<https://mall.industry.siemens.com/mall/en/us/Catalog/product?mlfb=US2:49SPL0AGF>

Service&Support (Manuals, Certificates, Characteristics, FAQs,...)

<https://support.industry.siemens.com/cs/ww/en/ps/US2:49SPL0AGF>

Image database (product images, 2D dimension drawings, 3D models, device circuit diagrams, EPLAN macros, ...)

[http://www.automation.siemens.com/bilddb/cax\\_us.aspx?mlfb=US2:49SPL0AGF&lang=en](http://www.automation.siemens.com/bilddb/cax_us.aspx?mlfb=US2:49SPL0AGF&lang=en)

---

last modified:

10/23/2025 