



NJU72501MJE-EV Evaluation Board

Piezo-sounder Driver with Multi-mode charge pump

■PinFunction

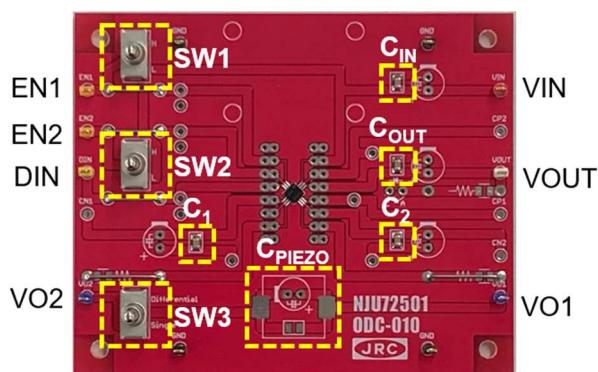


Fig1

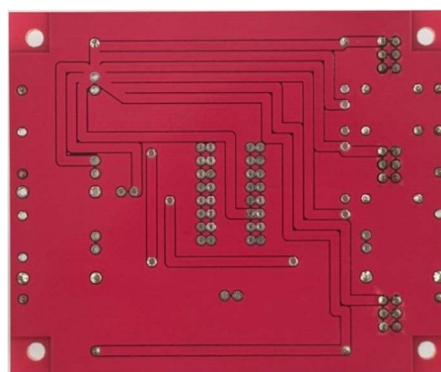


Fig2

The Piezo-sounder shown in Fig.1 is not mounted on the actual evaluation board. Users are expected to procure a commercially available unit independently.

Recommended Piezo-sounder/ Piezo-buzzer

PKLCS1212E2400-R1(muRata)

PKLCS1212E4001-R1(muRata)

■BlockDiagram

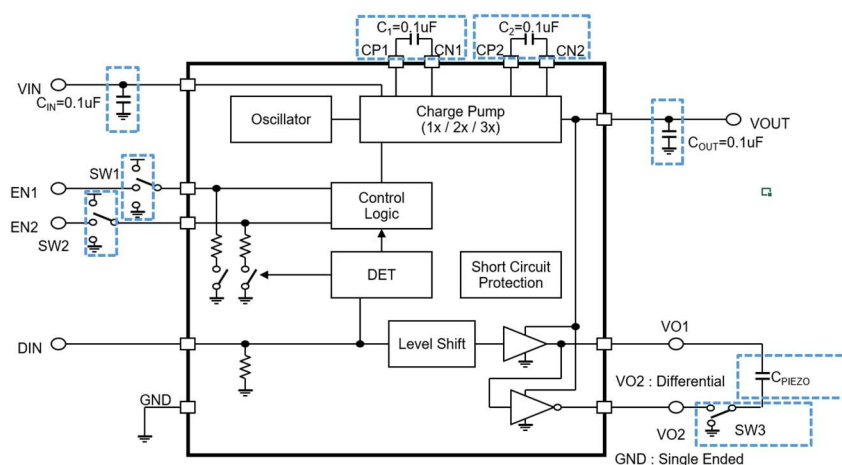


Table 1 is a list of external parts for application circuits. Please refer to the table and make a decision after evaluation according to the application to be used.

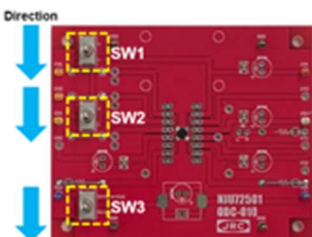
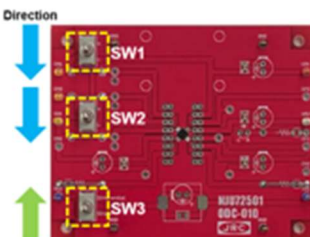
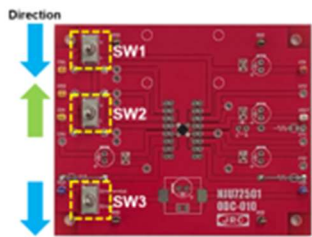
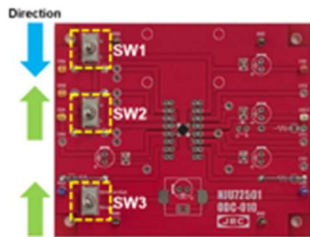
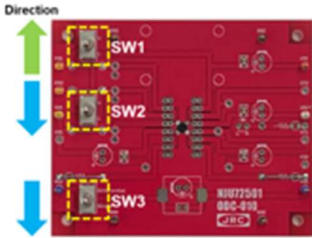
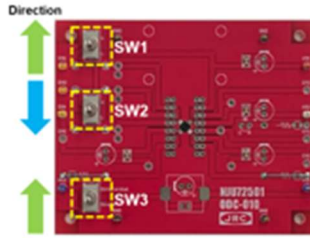
Table1 List of External Parts

Symbol	Value
C ₁	0.1μF
C ₂	0.1μF
C _{IN}	0.1μF
C _{OUT}	0.1μF
C _{PIEZO}	Piezo-sounder

NJU72501MJE Evaluation Board Piezo-sounder Driver with Multi-mode charge pump

■How to Use

SW1(EN) : 【Up】High 【Down】Low
SW2(EN) : 【Up】High 【Down】Low
SW3 : 【Up】Differential 【Down】Single Ended

Mode	Single Ended	Differential
SHDN		
1 × Mode		
2 × Mode		
3 × Mode	