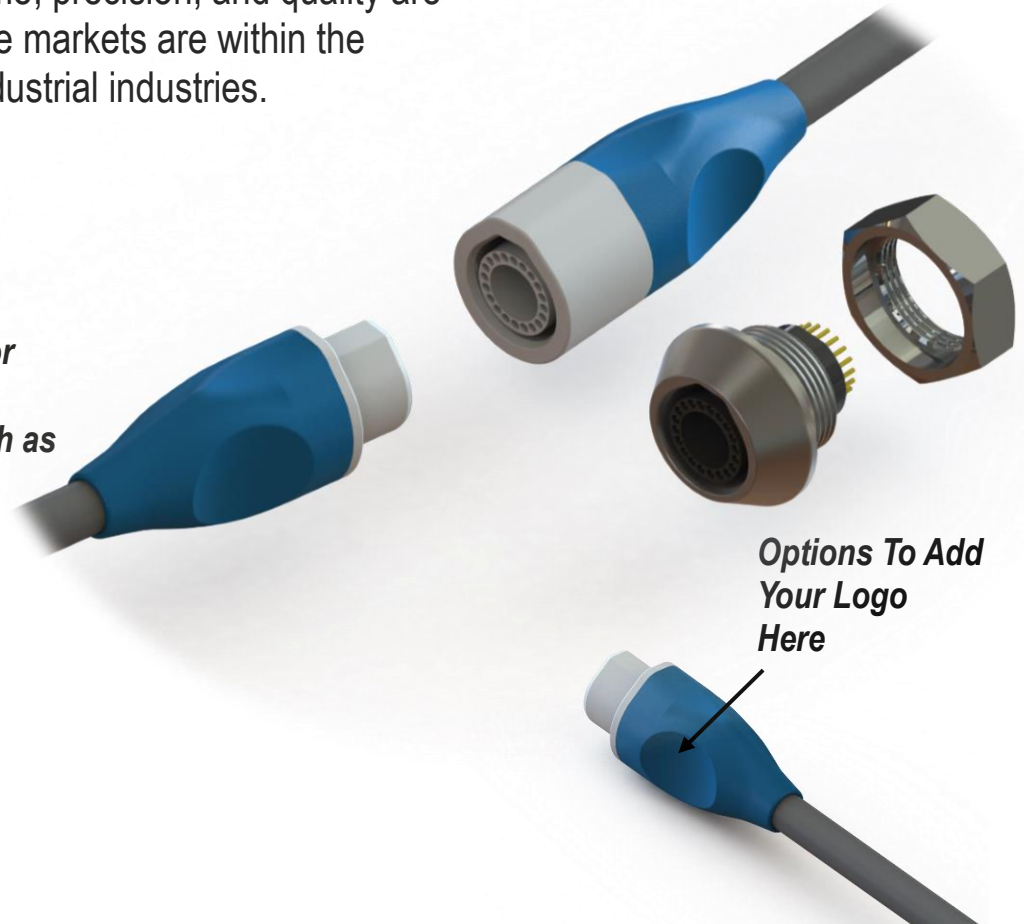


Onanon's *MagConnect™ | Hero* is performance engineered to be the most intuitive interconnect in the world. Its unique magnetic safety latch feature is ideal for medical applications, where time, precision, and quality are most critical. Additional suitable markets are within the automotive, aerospace and industrial industries.

- **2 to 20 pin capacity**
- **Intuitive and Self-Mating**
- **Magnetic Safety de-latching**
- **Customizable for reusable or single use applications**
- **Easily add components such as eeproms, resistors and capacitors**



## Specifications

### Mechanical

**Mating Type:** Magnetic

**Mating Cycles:**

**Plug:** 5000 Min.

**Panel Receptacle:** 10k Min.

**In-Line Receptacle:** 5k Min.

**Mating Forces:**

**Insertion:** Magnetic

**Removal (PR):** 4.5 lbf

**Removal (IR):** 3.5 lbf

### Electrical

**Operating Voltage:**

1kVAC and 1.5kVDC

**Operating Current:** 3A

### Environmental

**Sterilizable:** Gamma, EtO

**Chemical Resistance:** Common cleaning solvents

**Finger Safety:** IEC 60601-1

**Storage & Operating Temp:** 0-150°C

### Compatibility

**Contacts:** 20 pins

**Plug Cable Assembly**

**Accepted Wire Gauges:** 26-50 AWG

**Cable Jacket OD:** 0.286" Max

**Contact Termination:** Solder

**In-Line Receptacle Cable Assembly**

**Accepted Wire Gauges:** 26-50 AWG

**Cable Jacket OD:** 0.286" Max

**Contact Termination:** Solder



## Self-Mating

Intuitive tear drop allows for easy alignment and mating



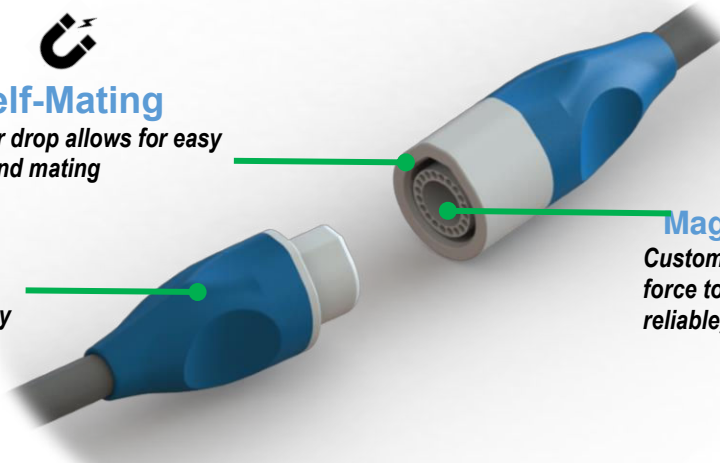
## Sterilizable

Chemical-Resistant Materials are Easy to Clean and Withstand Repeated Wipe-downs using Common Hospital Disinfectants



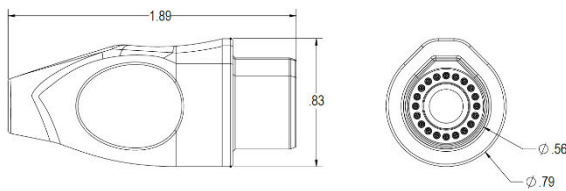
## Magnetic Safety Latch

Customizable low to high retention force to meet desired need for a reliable, safe connection

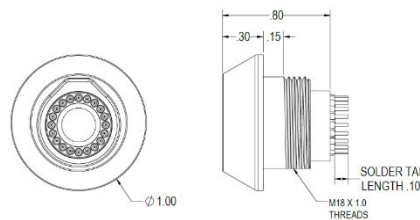


## Dimensions

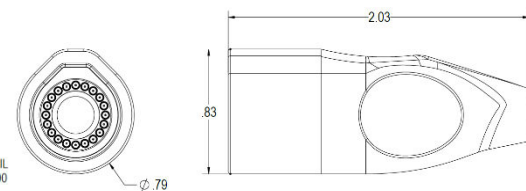
### Plug



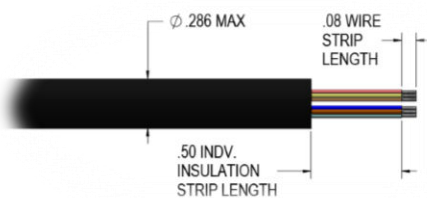
### Panel Mount Receptacle



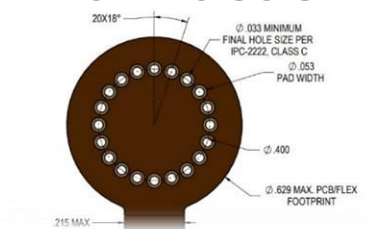
### Inline Receptacle



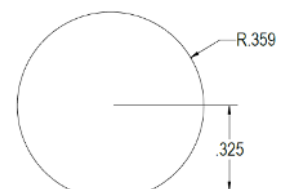
### Recommended Cable Specifications



### Recommended PCB or Flex Dimensions



### Recommended Panel Cutout



Units are in inches  
Contact us for unspecified dimensions

## Materials & Assembly

### Male Plug Cable Assembly

**Plug Housing:** Thermoplastic Polyester  
**Retaining Cap:** Thermoplastic Polyester  
**Pins:** Gold Plated Brass Alloy  
**Magnet:** Nickel Plated Neodymium  
**Slip-On Boot:** Thermoplastic Polyurethane

### Male Plug Cable Assembly

**Plug Housing:** Thermoplastic Polyester  
**Retaining Cap:** Thermoplastic Polyester  
**Pins:** Gold Plated Brass Alloy  
**Magnet:** Nickel Plated Neodymium  
**Slip-On Boot:** Thermoplastic Polyurethane

### Panel Mount Receptacle

**Insulator Insert:** Thermoplastic Polyester  
**Metal Shell:** Chromium Plated Brass Alloy  
**Pins:** Gold Plated Brass Alloy  
**Magnet:** Nickel Plated Neodymium

**Required Assembly:** Assemble connector body after terminating wires

**Required Assembly:** Assemble connector body after terminating wires

**Required Assembly:** Solder a PCB or flex assembly.