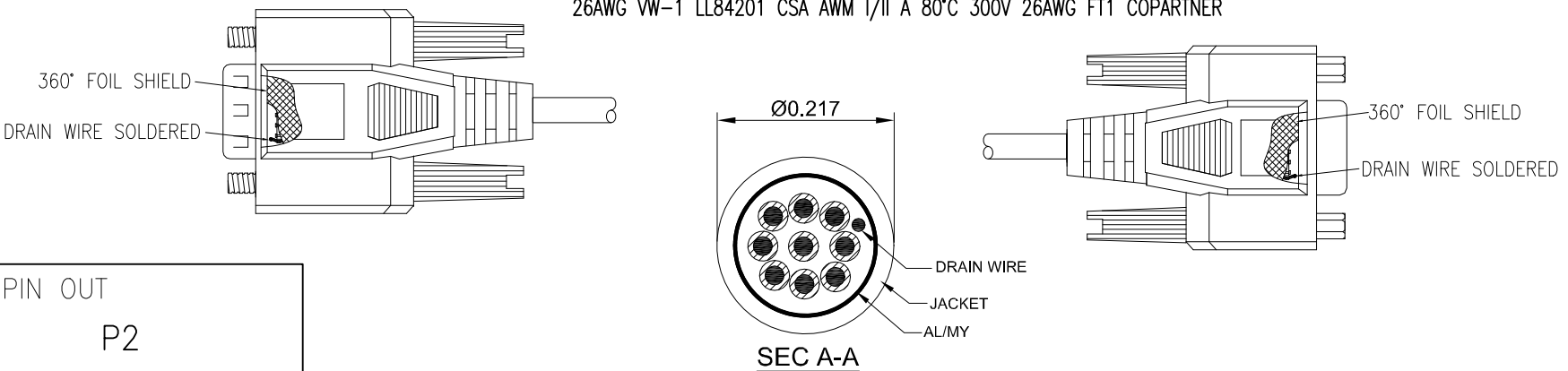
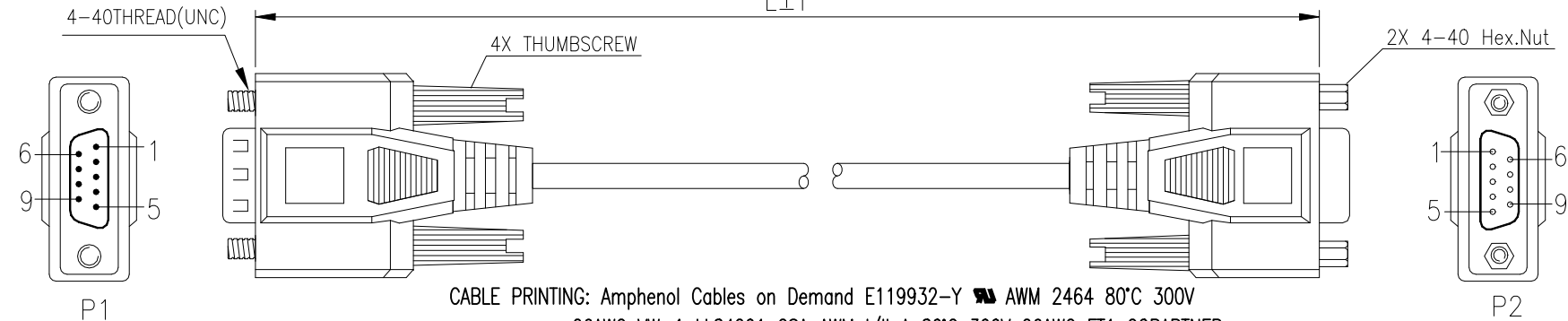


THE INFORMATION CONTAINED IN THIS DRAWING IS THE SOLE PROPERTY OF AMPHENOL CABLES ON DEMAND. ANY REPRODUCTION OR DISCLOSURE, TO THIRD PARTIES, IN PART OR WHOLE, WITHOUT THE EXPRESS WRITTEN PERMISSION OF AMPHENOL CABLES ON DEMAND IS PROHIBITED.

REVISIONS			
REV.	DESCRIPTION	DATE	APPROVED
A1	Add Hex.Nut	5/Dec/2007	
A2	Add wiring color	12/JAN/2012	
A3	Add 50FT	26/Mar/2019	
A4	CHANGE CABLE PRINTING	28/JULY/2025	




PIN OUT	
P1	P2
6	4 GREEN (GRAY)
1	
2	2 BROWN
3	3 RED
4	1 ORANGE
	6 BLACK
5	5 YELLOW
7	7 BLUE
8	8 PURPLE
9	9 NC
SHELL	SHELL DRAIN

ACD P/N	L±T
CS-DSNULW29MF-005	1524±51mm
CS-DSNULW29MF-010	3048±76mm
CS-DSNULW29MF-025	7620±102mm
CS-DSNULW29MF-050	15240±203mm

NOTE:  
1.TESTING CONDITIONS:  
A:INSULATION RESISTANCE: 10MΩ  
B:VOLTAGE: DC300V/0.01S  
C:CONDUCTOR RESISTANCE 2Ω(≤3M), 5Ω(>3M,<10M), 8M≥10Ω  
2.SHIELDING: COPPER FOIL TAPE COVER PREMOLD 360°, DRAIN WIRE SOLDER TO CONNECTOR SHELL



UNLESS OTHERWISE SPECIFIED DIMENSIONS ARE IN INCHES TOLERANCES ARE:	EAR NO.		Amphenol Cables on Demand 20 VALLEY ST. ENDICOTT, NY 13760		
	APPROVALS	DATE	ASM CBL Null Modem 9PIN D-Sub MF		
	DRAWN	XF			
	CHECKED	HYJ			
DECIMALS .X .XX .XXX	ANGLES ±X° ±XX ±XXX	RESP ENG	SIZE A	DWG. NO. CS-DSNULW29MF-XXX	REV. A4
THIRD ANGLE PROJECTION 		MFG ENG			
CAD FILE:		SCALE: N/A		SHEET 1 OF 1	

NOTES: UNLESS OTHERWISE SPECIFIED