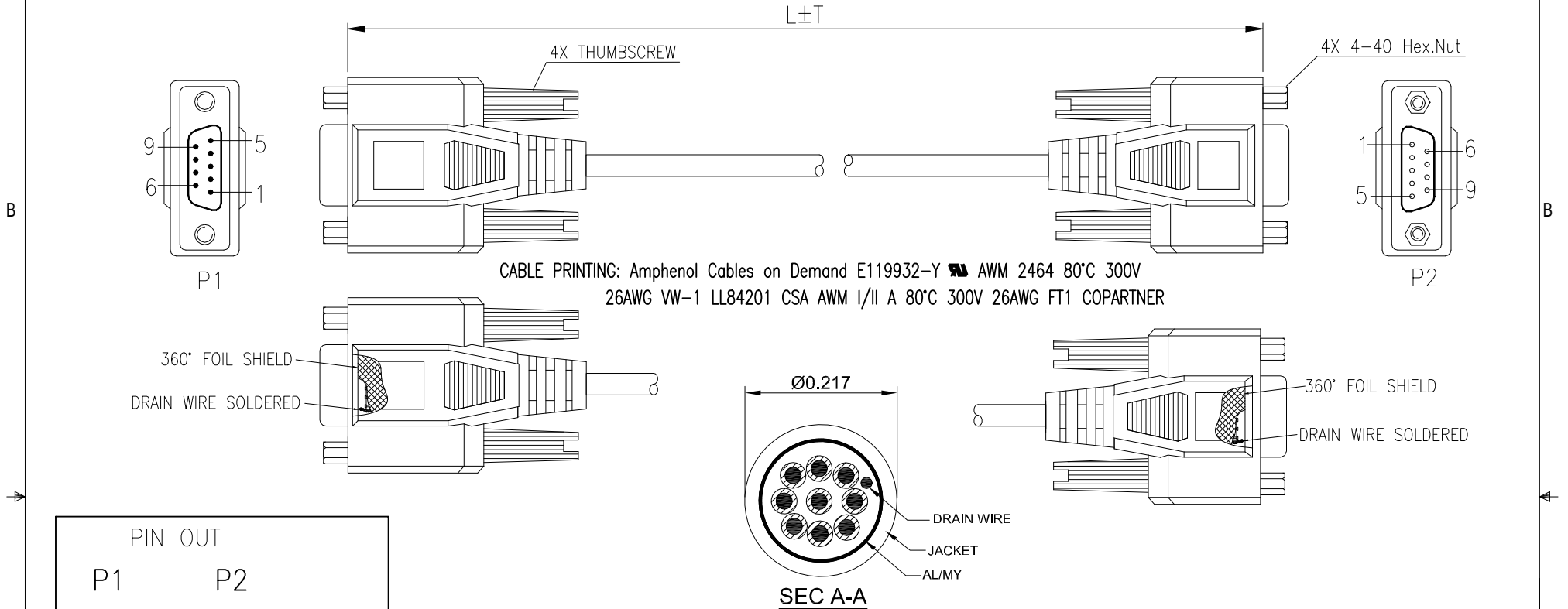


THE INFORMATION CONTAINED IN THIS DRAWING IS THE SOLE PROPERTY OF AMPHENOL CABLES ON DEMAND. ANY REPRODUCTION OR DISCLOSURE, TO THIRD PARTIES, IN PART OR WHOLE, WITHOUT THE EXPRESS WRITTEN PERMISSION OF AMPHENOL CABLES ON DEMAND IS PROHIBITED.

REVISIONS			
REV.	DESCRIPTION	DATE	APPROVED
A	NEW RELEASE	27/Dec/2006	
A1	Add Hex Nut	5/Dec/2007	
A2	Add wiring color	12/JAN/2012	
A3	CHANGE CABLE PRINTING	28/JULY/2025	



PIN OUT

P1	P2
6	4 GREEN (GRAY)
1	
2	2 BROWN
3	3 RED
4	1 ORANGE
	6 BLACK
5	5 YELLOW
7	7 BLUE
8	8 PURPLE
9	9 NC
SHELL	SHELL DRAIN

P/N CHART

ACD P/N	L±T
CS-DSNULW29MF-005	1524±51mm
CS-DSNULW29MF-010	3048±76mm
CS-DSNULW29MF-025	7620±102mm

NOTE:

1.TESTING CONDITIONS:

A:INSULATION RESISTANCE: 10MΩ

B:VOLTAGE: DC300V/0.01S

C:CONDUCTOR RESISTANCE 2Ω(≤3M), 5Ω(>3M,<10M), 8M>10Ω

2.SHIELDING: COPPER FOIL TAPE COVER PREMOLD 360°, DRAIN WIRE SOLDER TO CONNECTOR SHELL



UNLESS OTHERWISE SPECIFIED DIMENSIONS ARE IN INCHES TOLERANCES ARE:	EAR NO.	Amphenol Cables on Demand 20 VALLEY ST. ENDICOTT, NY 13760
DECIMALS .X ±.X .XX ±.XX .XXX ±.XXX	APPROVALS DRAWN XF	DATE
	CHECKED HYJ	
	RESP ENG	
THIRD ANGLE PROJECTION		
MFG ENG		
CAD FILE		
SIZE A	DWG. NO. CS-DSNULW29FF-XXX	REV. A3
SCALE: N/A		SHEET 1 OF 1

NOTES: UNLESS OTHERWISE SPECIFIED