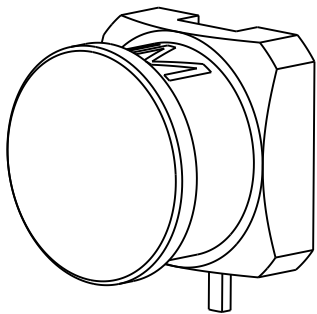
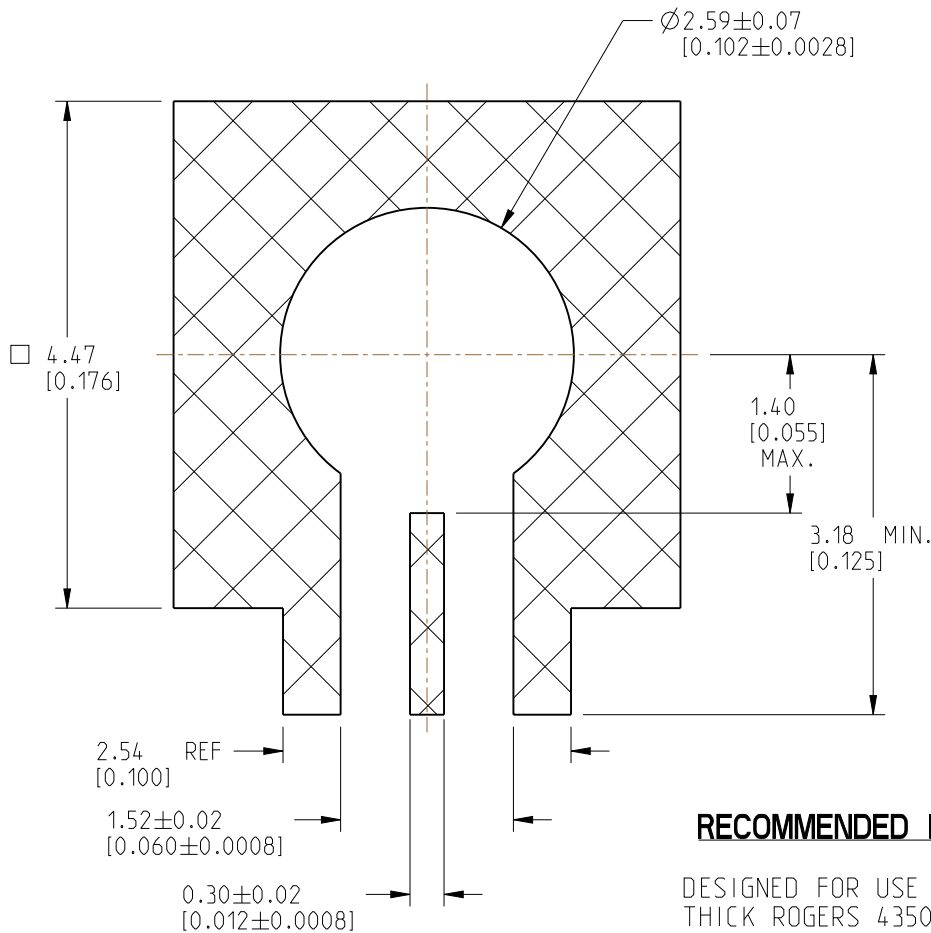


1. MATERIALS AND FINISHES:  
BODY AND CONTACT - BeCu, GOLD PLATING  
INSULATOR - LCP E130i, NATURAL  
CAP - PTFE, NATURAL
2. ELECTRICAL:  
A. IMPEDANCE: 50 OHM  
B. FREQUENCY RANGE: DC - 26.5 GHz  
C. VSWR (CONNECTOR ONLY): 1.15 MAX. @ DC - 10 GHz  
1.25 MAX. @ 10 - 26.5 GHz  
RESULTS WILL VARY BASED ON BOARD CONFIGURATION.  
D. DIELECTRIC WITHSTANDING VOLTAGE: 500 VRMS, MIN.  
E. INSULATION RESISTANCE: 1000 MΩ MIN.
3. MECHANICAL:  
A. DURABILITY: 500 CYCLES MIN.  
B. TEMPERATURE RANGE: -65°C TO +165°C
4. PACKAGING:  
A. QUANTITY: 50 PIECES TRAY  
B. MARKING: TRAY TO BE MARKED  
"AMPHENOL RF, 925-NM197J-51P AND DATE CODE"

REVISIONS				
REV	DESCRIPTION	DATE	ECN	BY
A	RELEASE TO MFG.	10-JUL-24	17097	SH



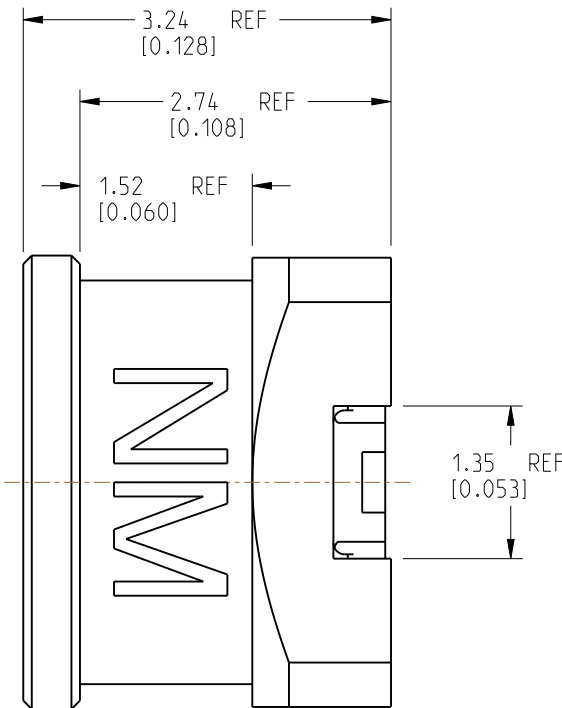
SCALE 8.000



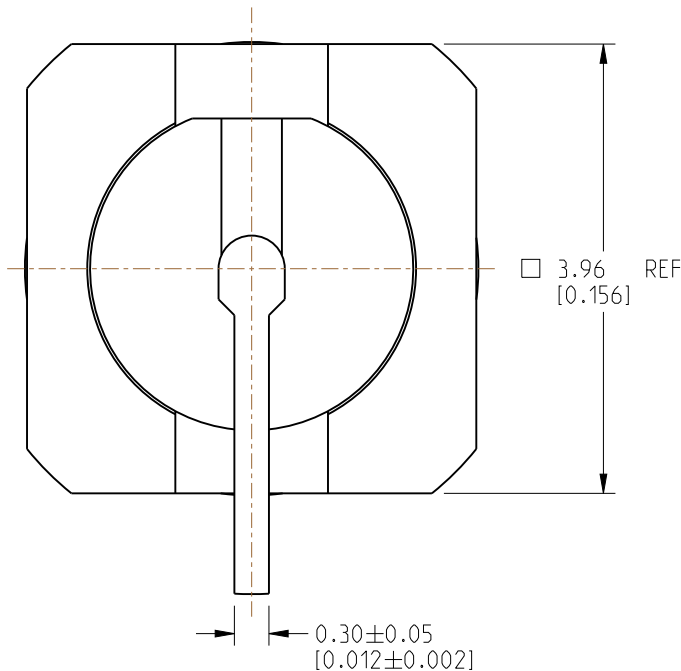
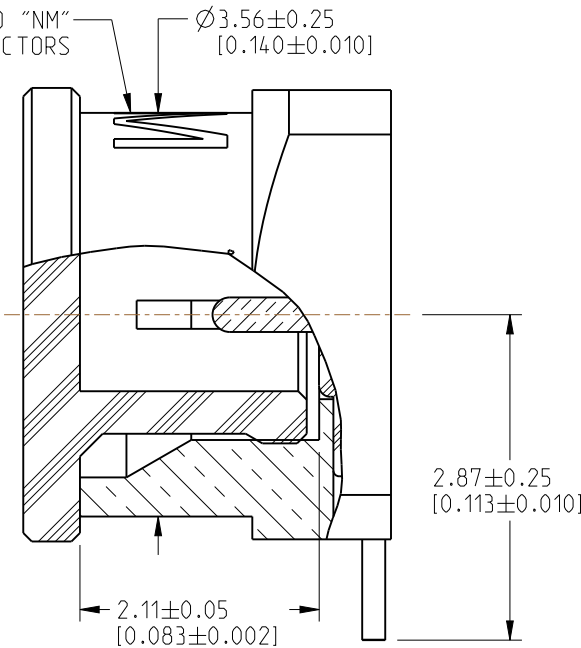
## RECOMMENDED PCB LAYOUT

DESIGNED FOR USE WITH 0.0100"  
THICK ROGERS 4350 PCB MATERIAL

THESE DIMENSIONS MAY VARY  
DEPENDING ON PCB MATERIAL USED




THIS SURFACE MARKED "NM"  
TO SIGNIFY NON-MAGNETIC CONNECTORS



## CUSTOMER OUTLINE DRAWING

**ALL OTHER SHEETS ARE FOR INTERNAL USE ONLY**

<div>NOTICE: These drawings, specifications, or other data (1) are, and remain the property of Amphenol corp. (2) must be returned upon request; and (3) are confidential and not to be disclosed to any person other than those to whom they are given by Amphenol Corp. The furnishing of these drawings, specifications, or other data by Amphenol Corp., or to any other person to anyone for any purpose is not to be regarded by implication or otherwise in any manner licensing, granting rights to permitting such holder or any other person to manufacture, use or sell any product, process or design, patented or otherwise, that may in any way be related to or disclosed by said drawings, specifications, or other data.</div>			<div>UNLESS OTHERWISE SPECIFIED DIMENSIONS ARE METRIC (INCHES) AND TOLERANCES ARE:   &lt;0.5mm = ±0.05mm      [&lt;0.020 = ±0.002]  0.5 - 6mm = ±0.1mm      [&gt;0.020 - 0.236 = ±0.004]  &gt;6.00 - 30mm = ±0.2mm      [&gt;0.236 - 1.181 = ±0.008]  &gt;30.00 - 120mm = ±0.3mm      [&gt;1.181 - 4.725 = ±0.012] ----- ANGLES = ±1°</div>			<div>MATERIAL  SEE NOTES</div>			<div>TITLE  SMPM STR JACK SMOOTH BORE SURFACE MOUNT NON-MAGNETIC</div>			<div>Amphenol RF</div>					
												SIZE		DRAWING NO. 925-NM197J-51P		REV	
												B		ITEM NO. 925-NM197J-51P		A	
														PART NO. 925-NM197J-51P			
THIRD ANGLE PROJ. 			REFERENCE 925-197J-51P		EAR# 9158		ENGR.1 E. HILL		ENGR.2 M.ZHANG		DATE 11-MAY-24		SHEET NO. 2 OF 2		SCALE: 15.0:1.0		