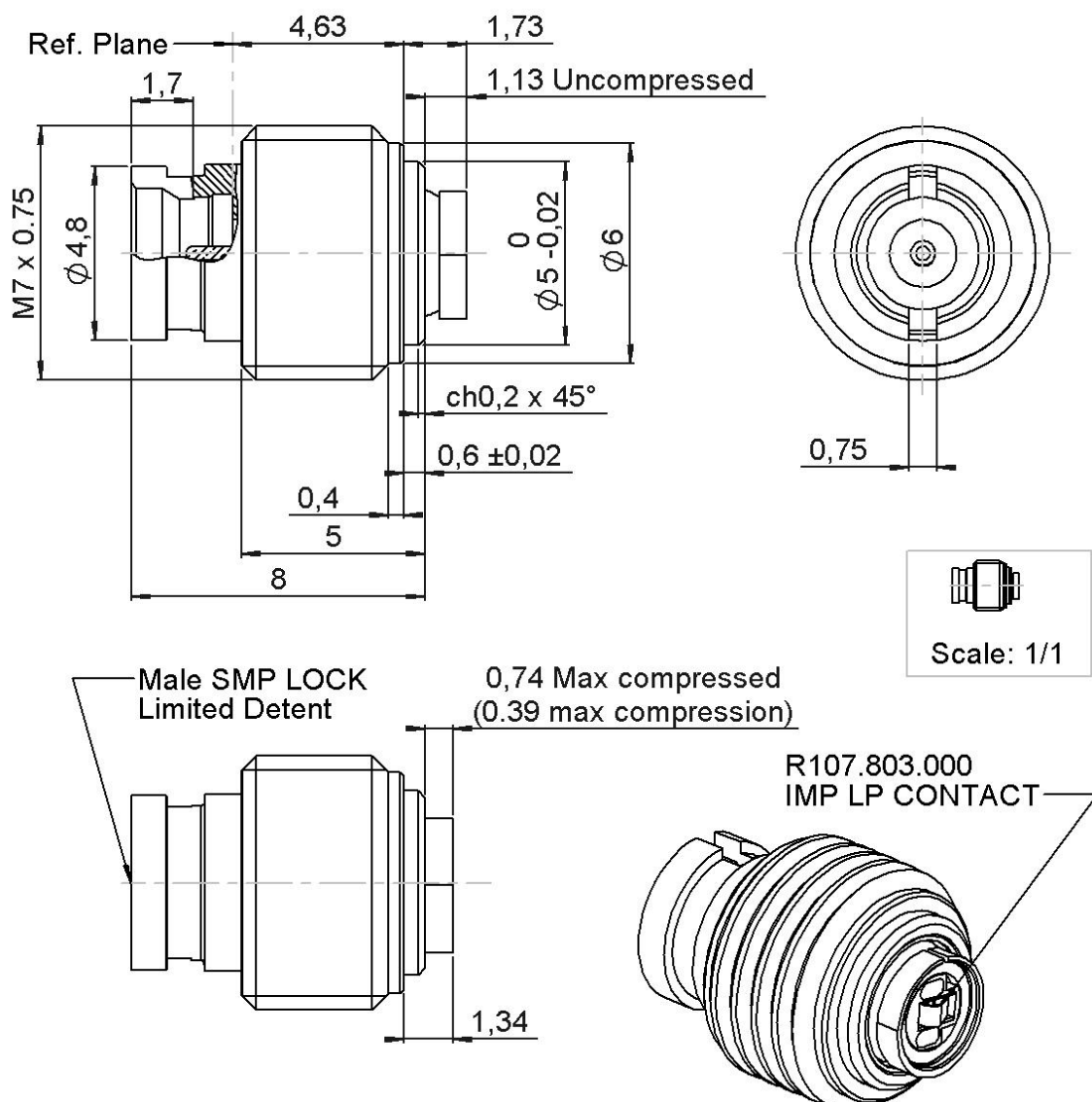


PAGE 1/5

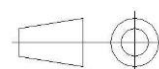
ISSUE 14-01-20A

SERIES IMP

PART NUMBER R107820300



All dimensions are in mm. Tolerances according ISO 2768 m-H



COMPONENTS	MATERIALS	PLATING (µm)
Body	STAINLESS STEEL	PASSIVATED
Center contact	BERYLLIUM COPPER,BRASS	GOLD OVER NICKEL
Outer contact		
Insulator	PTFE+PEEK	
Gasket		
Others parts	BERYLLIUM COPPER,BRASS	GOLD OVER NICKEL
-	-	-
-	-	-

PAGE 2/5

ISSUE 14-01-20A

SERIES IMP

PART NUMBER R107820300

PACKAGING

Standard	Unit	Other
1	Contact us	Contact us

ELECTRICAL CHARACTERISTICS

Impedance	50	Ω
Frequency	0-18	GHz
VSWR	* + 0,000	x F(GHz) Maxi
Insertion loss	**	√F(GHz) dB Maxi
RF leakage	- (NA	- F(GHz) dB Maxi
Voltage rating	225	Veff Maxi
Dielectric withstanding voltage	500	Veff mini
Insulation resistance	1000	MΩ mini

ENVIRONMENTAL

Operating temperature	-55/+125	°C
Hermetic seal	NA	Atm.cm3/s
Panel leakage	NA	

MECHANICAL CHARACTERISTICS

Center contact retention		
Axial force – Mating End	***	N mini
Axial force – Opposite end	***	N mini
Torque	NA	N.cm mini

SPECIFICATION

OTHER CHARACTERISTICS

Recommended torque		
Mating	NA	N.cm
Panel nut	90	N.cm
Mating life	50	Cycles mini
Nominal Weight	1,510	g
(Add +15% for max weight)		

Others:

- *VSWR: 1.10 typic DC-12GHz
- *VSWR: 1.35 typic 12-->18GHz
- **0.35dB max at 18GHz
- ***0.5N min for IMP LP
- ***6.7N min for SMP LOCK
- ****50 cycles min for IMP LP
- ****500 cycles for SMP LOCK

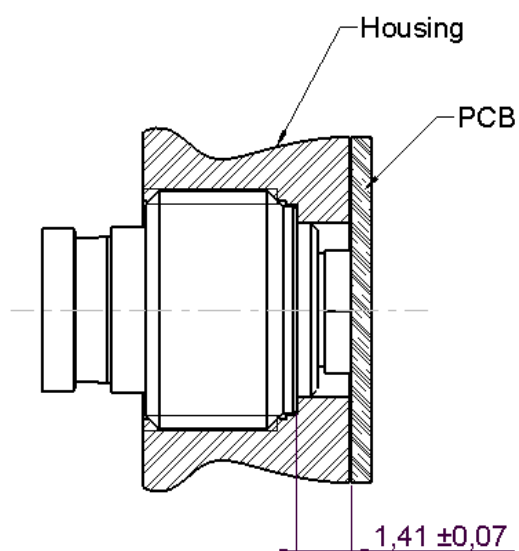
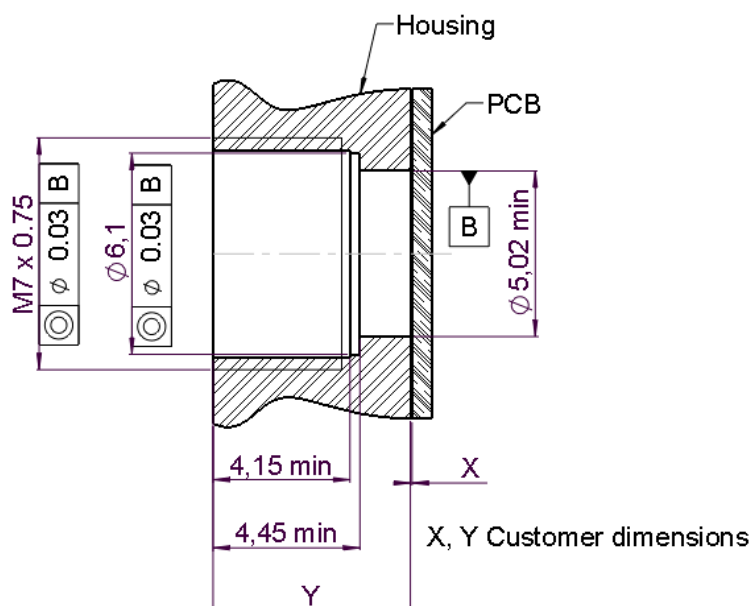
PAGE 3/5

ISSUE 14-01-20A

SERIES IMP

PART NUMBER **R107820300**

ADDITIONAL INFORMATION
MOUNTING AND REPLACEMENT INSTRUCTIONS



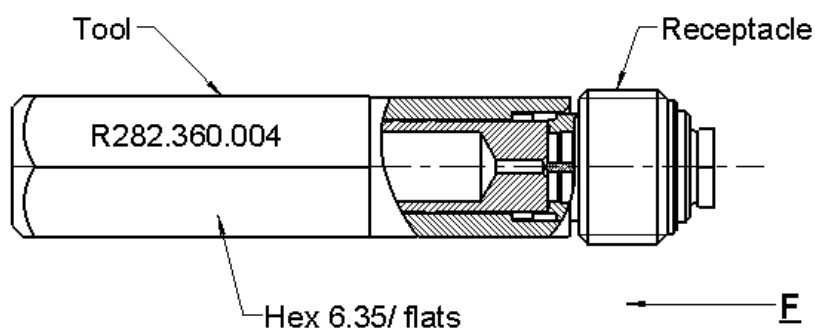
PAGE 4/5

ISSUE 14-01-20A

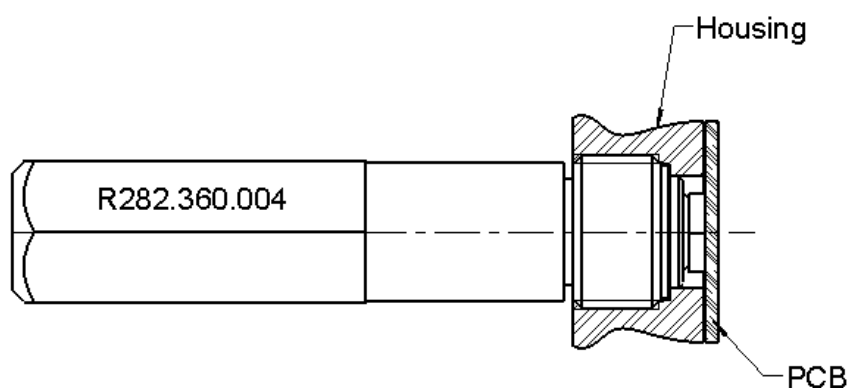
SERIES IMP

PART NUMBER **R107820300**

- 1) Connector must be screwed or unscrewed with adapted torque driver R282.339.005. (recommended coupling torque : 90 N.cm)
(Tool without the torque driver: R282.360.004)
- 2) Slide on the connector in F direction until it stops against the tool.



- 3) Screw the whole into the housing until activation of the torque driver.



PAGE 5/5

ISSUE 14-01-20A

SERIES IMP

PART NUMBER R107820300

PAD recommended

