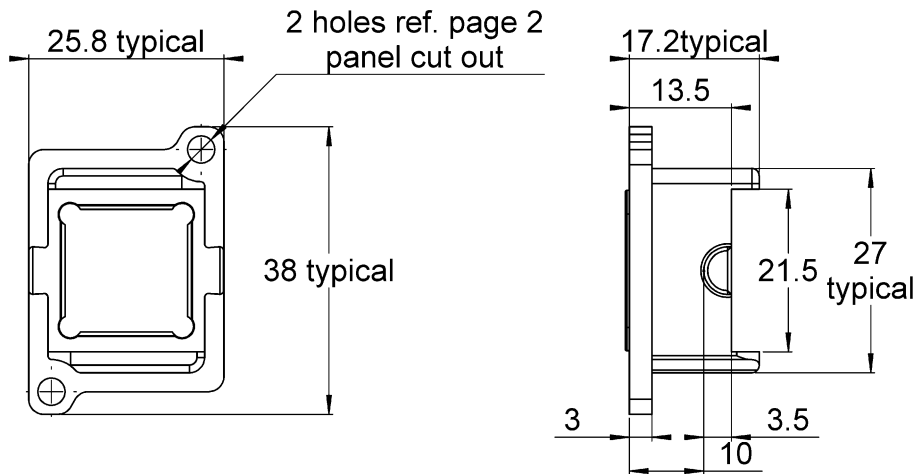
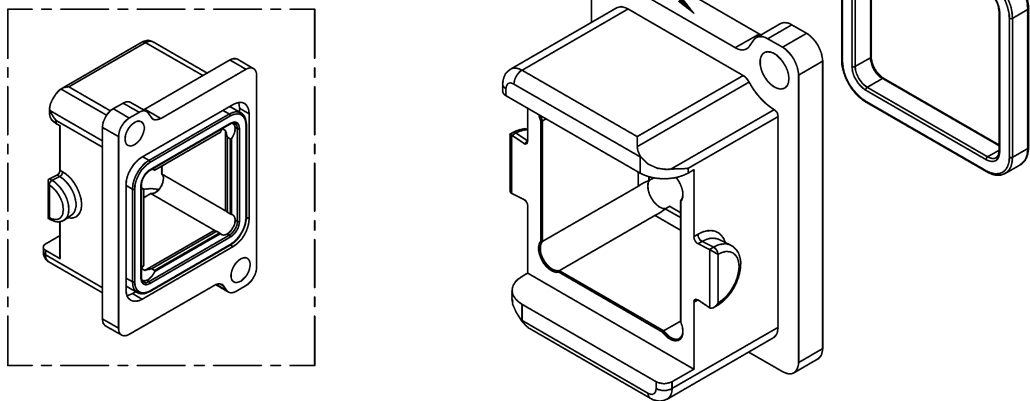


PAGE 1/3	ISSUE 17-08-22A	SERIES OCTIS	PART NUMBER OCTI907530
----------	-----------------	--------------	------------------------



Packing configuration



All dimensions are in mm. Tolerances according ISO 2768 m-H

DESCRIPTION

REP	COMPONENT	MATERIALS	PLATING
1	Screwable Receptacle Body	ALUMINUM	PASSIVATED
2	Panel Sealing Gasket	SILICONE	-

PAGE 2/3

ISSUE 17-08-22A

SERIES OCTIS

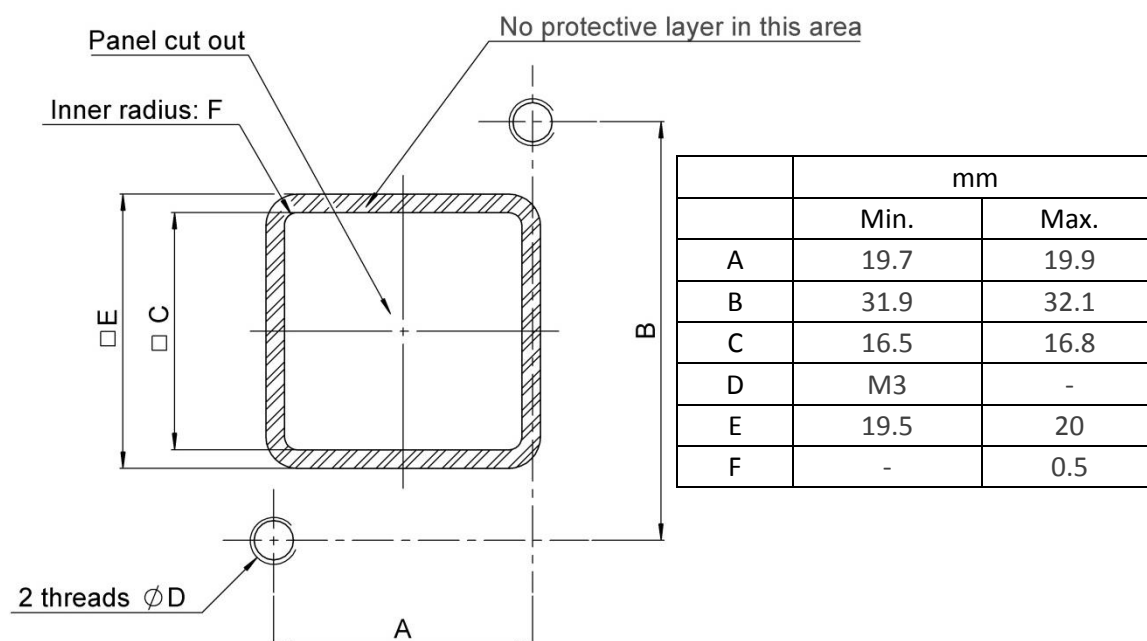
PART NUMBER OCTI907530

GENERAL CHARACTERISTICS

Mechanical Mating endurance (cycles) Vibration Weight (g)	IEC 61300-2-2 IEC 61300-2-1 -	100 - 12.169
Environmental Protection class Operating temperature (°C) Storage temperature (°C) Salt Mist RoHS Flammability	IEC 60529 IEC 61300-2-22 IEC 61300-2-22 IEC 61300-2-26 - UL 94	IP67 * -40 / +85 -65 / +85 720h * Compliant V0
Others: Equipment interface Packaging	- -	For use with OCTIS™ plug or receptacle cap Trays in card board box 24 pcs by tray

* When mated with corresponding Radiall OCTIS plug

PANEL CUT OUT



PAGE 3/3

ISSUE 17-08-22A

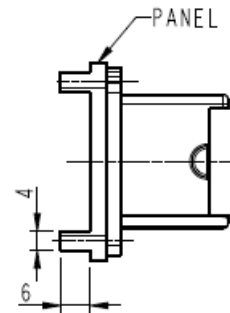
SERIES OCTIS

PART NUMBER OCTI907530

VIEW OF BULKHEAD FIXED ON PANEL

IF A SCREW TYPE BULKHEAD IS USED, THEN THE CASTED MOUNTING PANEL SHOULD HAVE ON ITS REAR SIDE AN INTEGRAL RECTANGULAR REINFORCED RIBS OF 6MM THICKNESS AND 4MM WIDTH ALONG THE MOUNTING SCREW PLANE AT THE TOP AND BOTTOM TO ACCOMMODATE THE BLIND INTERNAL SCREW THREAD IT IS NOT APPLICABLE FOR INTEGRATED BULKHEAD CASTED WITH MOUNTING PANEL.

IF THE BULKHEAD IS SCREW TYPE THEN THE SCREWS TO BE USED ARE M3 RECOMMENDED SCREW-M3x8MM AND THE MATERIAL IS STAINLESS STEEL.



PACKAGING:

