

C-RCEI 1,5/M3,5 - Ring cable lug



3241202

<https://www.phoenixcontact.com/us/products/3241202>

Please be informed that the data shown in this PDF document is generated from our online catalog. Please find the complete data in the user documentation. Our general terms of use for downloads are valid.



Ring cable lug, red, 0.5 ... 1.5 mm², M3.5, with copper sleeve incorporated, for insulation crimp

Your advantages

- The mechanical load capacity of the connection is significantly increased by the additionally applied copper sleeve (insulation crimp)
- The insulated ring cable lugs with plastic sleeve are hard-soldered and feature the 'EASY ENTRY' system

Commercial data

| | |
|--------------------------------------|---------------|
| Item number | 3241202 |
| Packing unit | 100 pc |
| Minimum order quantity | 100 pc |
| Sales key | BH34 |
| Product key | BH3421 |
| GTIN | 4046356826075 |
| Weight per piece (including packing) | 0.885 g |
| Weight per piece (excluding packing) | 0.885 g |
| Customs tariff number | 85369010 |
| Country of origin | TW |

C-RCEI 1,5/M3,5 - Ring cable lug

3241202

<https://www.phoenixcontact.com/us/products/3241202>

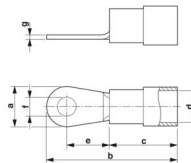


Technical data

Product properties

| | |
|------------------|-------------------------|
| Product type | Connector |
| Product property | Halogen-free |
| | Conical conductor entry |
| | Brazed |
| | PA-insulated |

Dimensions

| | |
|------------------------------------------------------------|------------------------------------------------------------------------------------|
| Dimensional drawing |  |
| Width | 6.6 mm |
| Sleeve length | 20.6 mm |
| Length of the insulating material sleeve | 11 mm |
| Distance from the center to the insulating material sleeve | 6.3 mm |
| Min. material thickness | 0.75 mm |
| Inner dimensions of the insulating collar | 4.1 mm |

Internal dimensions

| | |
|-------------------|--------|
| Internal diameter | 3.7 mm |
|-------------------|--------|

Material specifications

| | |
|----------------------------------------|----------------|
| Color | red (RAL 3001) |
| Material | Copper |
| Flammability rating according to UL 94 | V2 |
| Coating | tin-plated |
| Insulating material | PA |
| Components | halogen-free |

Mechanical properties

Technical data

| | |
|---------------|---------|
| Sleeve length | 20.6 mm |
|---------------|---------|

Environmental and real-life conditions

Ambient conditions

| | |
|-------------------------------------------------|---------------------------------------------------------------------------------------------------------|
| Optimum ambient temperature (storage/transport) | 20.00 °C 50.00 % Humidity (RH), store inside sealed original packaging. Avoid direct sunlight and heat. |
| Ambient temperature (operation) | -20 °C ... 105 °C |
| Ambient temperature (assembly) | -20 °C ... 100 °C |

C-RCEI 1,5/M3,5 - Ring cable lug



3241202

<https://www.phoenixcontact.com/us/products/3241202>

| | |
|------------------------|--------|
| Short-term temperature | 100 °C |
|------------------------|--------|

C-RCEI 1,5/M3,5 - Ring cable lug

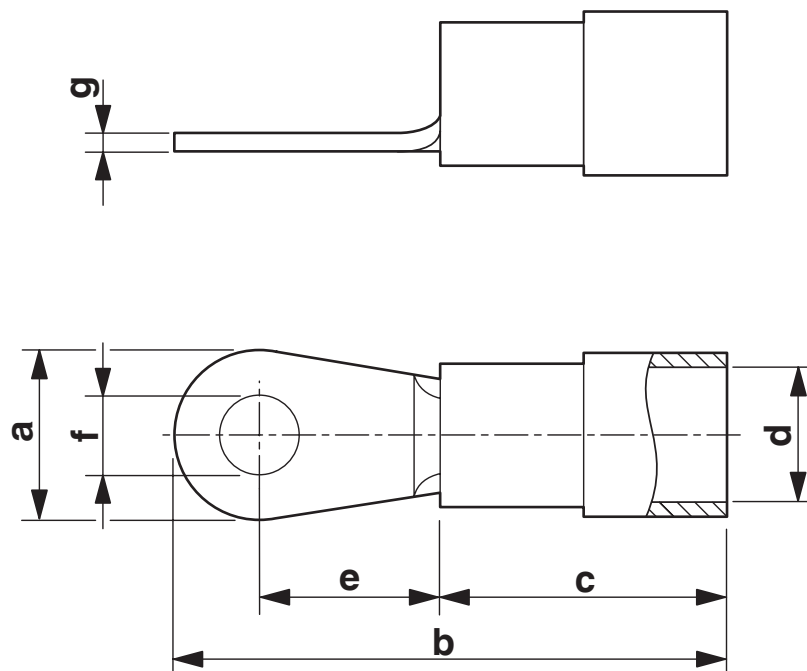
3241202

<https://www.phoenixcontact.com/us/products/3241202>



Drawings

Dimensional drawing



C-RCEI 1,5/M3,5 - Ring cable lug



3241202

<https://www.phoenixcontact.com/us/products/3241202>

Classifications

ECLASS

| | |
|-------------|----------|
| ECLASS-13.0 | 27400204 |
| ECLASS-15.0 | 27400204 |

ETIM

| | |
|----------|----------|
| ETIM 9.0 | EC001052 |
|----------|----------|

UNSPSC

| | |
|-------------|----------|
| UNSPSC 21.0 | 27121700 |
|-------------|----------|

C-RCEI 1,5/M3,5 - Ring cable lug



3241202

<https://www.phoenixcontact.com/us/products/3241202>

Environmental product compliance

EU RoHS

| | |
|-----------------------------------------|--------------------|
| Fulfills EU RoHS substance requirements | Yes, No exemptions |
|-----------------------------------------|--------------------|

China RoHS

| | |
|----------------------------------------|------------------------------------------|
| Environment friendly use period (EFUP) | EFUP-E |
| | No hazardous substances above the limits |

EU REACH SVHC

| | |
|-------------------------------------|----------------------------|
| REACH candidate substance (CAS No.) | No substance above 0.1 wt% |
|-------------------------------------|----------------------------|

Phoenix Contact 2025 © - all rights reserved
<https://www.phoenixcontact.com>

Phoenix Contact USA
586 Fulling Mill Road
Middletown, PA 17057, United States
(+717) 944-1300
info@phoenixcon.com