

EB 7-OTTA 6 - Insertion bridge

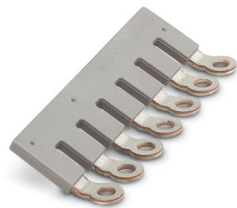


3026052

<https://www.phoenixcontact.com/us/products/3026052>

Please be informed that the data shown in this PDF document is generated from our online catalog. Please find the complete data in the user documentation. Our general terms of use for downloads are valid.

Insertion bridge, pitch: 11.1 mm, number of positions: 7, color: gray



Commercial data

Item number	3026052
Packing unit	10 pc
Minimum order quantity	10 pc
Sales key	BE19
Product key	BE1Z2X
GTIN	4017918139087
Weight per piece (including packing)	15.39 g
Weight per piece (excluding packing)	15.39 g
Customs tariff number	85369095
Country of origin	PL

EB 7-OTTA 6 - Insertion bridge



3026052

<https://www.phoenixcontact.com/us/products/3026052>

Technical data

Product properties

Product type	Insertion bridge
Number of positions	7
Pitch	11.1 mm
Potentials	1

Dimensions

Pitch	11.1 mm
-------	---------

Material specifications

Color	gray (RAL 7042)
Material	Copper
Insulating material	PA

Environmental and real-life conditions

Ambient conditions

Ambient temperature (operation)	-60 °C ... 105 °C
Ambient temperature (storage/transport)	-25 °C ... 60 °C (for a short time, not exceeding 24 h, -60 °C to +70 °C)
Ambient temperature (assembly)	-5 °C ... 70 °C
Ambient temperature (actuation)	-5 °C ... 70 °C
Permissible humidity (storage/transport)	30 % ... 70 %

Mounting

Mounting type	Screw mounting
---------------	----------------

EB 7-OTTA 6 - Insertion bridge



3026052

<https://www.phoenixcontact.com/us/products/3026052>

Classifications

ECLASS

ECLASS-13.0	27250303
ECLASS-15.0	27250303

ETIM

ETIM 9.0	EC000489
----------	----------

UNSPSC

UNSPSC 21.0	39121400
-------------	----------

EB 7-OTTA 6 - Insertion bridge



3026052

<https://www.phoenixcontact.com/us/products/3026052>

Environmental product compliance

EU RoHS	
Fulfills EU RoHS substance requirements	Yes, No exemptions
China RoHS	
Environment friendly use period (EFUP)	EFUP-E
	No hazardous substances above the limits
EU REACH SVHC	
REACH candidate substance (CAS No.)	No substance above 0.1 wt%

Phoenix Contact 2025 © - all rights reserved
<https://www.phoenixcontact.com>

Phoenix Contact USA
586 Fulling Mill Road
Middletown, PA 17057, United States
(+717) 944-1300
info@phoenixcon.com