

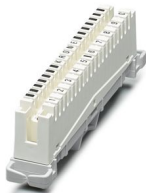
# CT 10-TL - Disconnect strip

2765356

<https://www.phoenixcontact.com/us/products/2765356>



Please be informed that the data shown in this PDF document is generated from our online catalog. Please find the complete data in the user documentation. Our general terms of use for downloads are valid.



LSA-PLUS disconnect strip to hold the CTM and CT 10 protection modules. Version: 10 double conductors, dimension A: 124 mm.

## Your advantages

- Space-saving due to compact design
- Flexible fields of application with modular protective plug
- Maximum ease of maintenance, thanks to the 2-piece design

## Commercial data

|                                      |               |
|--------------------------------------|---------------|
| Item number                          | 2765356       |
| Packing unit                         | 5 pc          |
| Minimum order quantity               | 1 pc          |
| Sales key                            | CL03          |
| Product key                          | CL321Z        |
| GTIN                                 | 4017918066253 |
| Weight per piece (including packing) | 61.21 g       |
| Weight per piece (excluding packing) | 56.96 g       |
| Customs tariff number                | 85389099      |
| Country of origin                    | DE            |

# CT 10-TL - Disconnect strip

2765356

<https://www.phoenixcontact.com/us/products/2765356>



## Technical data

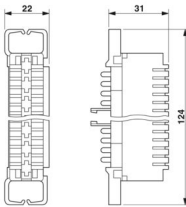
### Product properties

|                                |                   |
|--------------------------------|-------------------|
| Product type                   | Mounting material |
| Product family                 | COMTRAB           |
| Type                           | LSA-PLUS module   |
| Surge protection fault message | none              |

### Connection data

|                   |                                    |
|-------------------|------------------------------------|
| Connection method | Insulation displacement connection |
|-------------------|------------------------------------|

### Dimensions

|                     |                                                                                     |
|---------------------|-------------------------------------------------------------------------------------|
| Dimensional drawing |  |
| Width               | 124 mm                                                                              |
| Height              | 22 mm                                                                               |
| Depth               | 53 mm                                                                               |

### Material specifications

|                                        |                       |
|----------------------------------------|-----------------------|
| Color                                  | light gray (RAL 7035) |
|                                        | white (RAL 9010)      |
| Flammability rating according to UL 94 | V0                    |

### Mechanical properties

|                 |    |
|-----------------|----|
| Mechanical data |    |
| Open side panel | No |

### Protective circuit

|                                |      |
|--------------------------------|------|
| Surge protection fault message | none |
|--------------------------------|------|

### Mounting

|               |                              |
|---------------|------------------------------|
| Mounting type | on LSA-PLUS mounting bracket |
|---------------|------------------------------|

# CT 10-TL - Disconnect strip

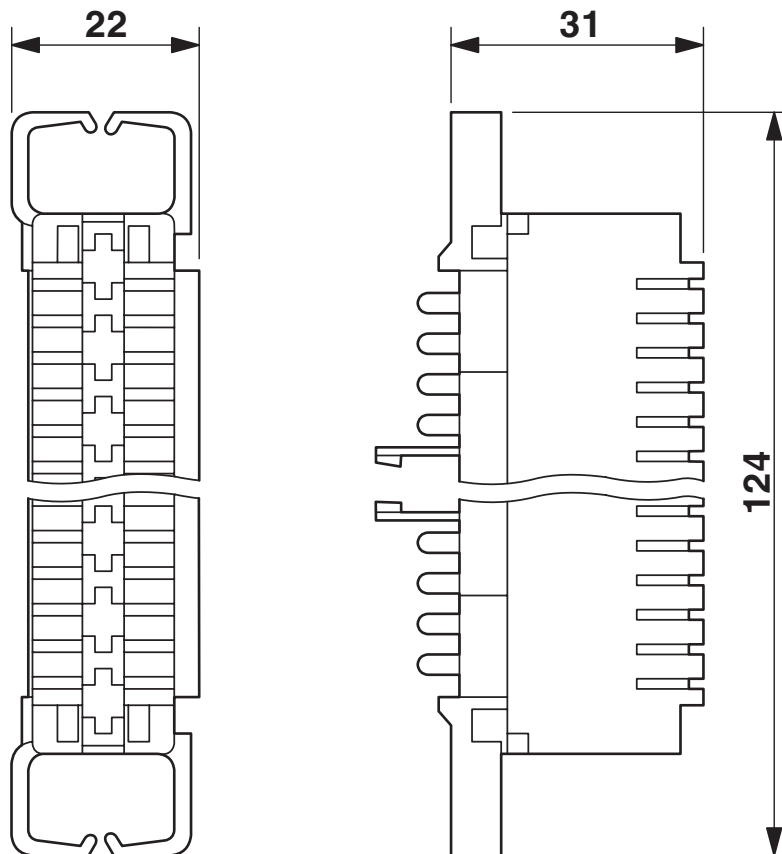
2765356

<https://www.phoenixcontact.com/us/products/2765356>



## Drawings

Dimensional drawing



# CT 10-TL - Disconnect strip

2765356

<https://www.phoenixcontact.com/us/products/2765356>



## Classifications

### ECLASS

|             |          |
|-------------|----------|
| ECLASS-13.0 | 27171503 |
| ECLASS-15.0 | 27171503 |

### ETIM

|          |          |
|----------|----------|
| ETIM 9.0 | EC000943 |
|----------|----------|

### UNSPSC

|             |          |
|-------------|----------|
| UNSPSC 21.0 | 39121600 |
|-------------|----------|

# CT 10-TL - Disconnect strip

2765356

<https://www.phoenixcontact.com/us/products/2765356>



## Environmental product compliance

|                                         |                                          |
|-----------------------------------------|------------------------------------------|
| EU RoHS                                 |                                          |
| Fulfills EU RoHS substance requirements | Yes, No exemptions                       |
| China RoHS                              |                                          |
| Environment friendly use period (EFUP)  | EFUP-E                                   |
|                                         | No hazardous substances above the limits |
| EU REACH SVHC                           |                                          |
| REACH candidate substance (CAS No.)     | No substance above 0.1 wt%               |

Phoenix Contact 2025 © - all rights reserved  
<https://www.phoenixcontact.com>

Phoenix Contact USA  
586 Fulling Mill Road  
Middletown, PA 17057, United States  
(+717) 944-1300  
[info@phoenixcon.com](mailto:info@phoenixcon.com)