

# PLD E 400 W 250 - LED enclosure light



2702221

<https://www.phoenixcontact.com/us/products/2702221>

Please be informed that the data shown in this PDF document is generated from our online catalog. Please find the complete data in the user documentation. Our general terms of use for downloads are valid.



LED enclosure light, 24 V DC, length: 250 mm, degree of protection: IP20, can be swiveled, can be switched in series, including mounting accessories

## Product description

The LED light is designed to illuminate the interior of control cabinets. The prismatic integrated into the light cover ensures optimum illumination of the control cabinet. You can mount the light without tools via the clip system. You can connect several lights in succession. You can switch the light on and off either via the integrated button or via an external door position switch.

## Your advantages

- Tool-free mounting, thanks to clip fastening
- Wiring via sensor/actuator cables with M8 snap-in technology
- Series connection reduces cabling effort for control cabinets arranged in series
- Optimum lighting of the control cabinet, thanks to integrated prismatic and capacity to swivel
- Swiveling enables optimum adjustment to the relevant control cabinet depth
- LED service life of 50,000 h (L70 value) prevents bulb replacement

## Commercial data

Item number	2702221
Packing unit	1 pc
Minimum order quantity	1 pc
Note	Made to order (non-returnable)
Sales key	DR08
Product key	DRL232
GTIN	4055626057293
Weight per piece (including packing)	166 g
Weight per piece (excluding packing)	163.7 g
Customs tariff number	94054231
Country of origin	DE

# PLD E 400 W 250 - LED enclosure light



2702221

<https://www.phoenixcontact.com/us/products/2702221>

## Technical data

### Notes

#### Note on application

Note on application	Only for industrial use
---------------------	-------------------------

#### Utilization restriction

EMC note	EMC: class A product, see manufacturer's declaration in the download area
----------	---

### Product properties

Product type	Enclosure light
Application	Control cabinet
Mounting position	any
Special properties	can be swiveled $\pm 90^\circ$ swivel range
	can be switched in series
	including mounting accessories
Socket type	No socket

### Electrical properties

Maximum power dissipation for nominal condition	2 W
---	-----

#### Supply: Module electronics

Connection method	M8 connector (snap-in)
Number of positions	3
Supply voltage	24 V DC
Supply voltage range	19.2 V DC ... 30 V DC
Power consumption	1.5 W

### Connection data

Connection method	M8 connector (snap-in)
-------------------	------------------------

### Signaling

#### Light properties

Source of light type	LED
Number of LEDs	5
Color temperature	5000 K
Color rendering index	75
Luminous flux	140 lm (Net luminous flux)
Illumination	max. 335 lx (50 cm distance)
	max. 85 lx (Distance of 1 m)
Ordinance	Delegated Regulation (EU) 2019/2015
Energy efficiency class	F (1 light source)
Note	This product contains an energy efficiency class F light source.

# PLD E 400 W 250 - LED enclosure light



2702221

<https://www.phoenixcontact.com/us/products/2702221>

## Dimensions

Dimensional drawing	
Width	23 mm
Height	38 mm
Length	250 mm

## Material specifications

Color	traffic grey A RAL 7042
Material ()	Plastic
Housing material	Plastic

## Environmental and real-life conditions

### Ambient conditions

Ambient temperature (operation)	-25 °C ... 60 °C
Degree of protection	IP20
Air pressure (operation)	70 kPa ... 106 kPa (up to 3000 m above sea level)
Air pressure (storage/transport)	70 kPa ... 106 kPa (up to 3000 m above sea level)
Ambient temperature (storage/transport)	-40 °C ... 85 °C
Permissible humidity (operation)	5 % ... 95 %
Permissible humidity (storage/transport)	5 % ... 95 %

## Standards and regulations

Protection class	III
------------------	-----

## Mounting

Mounting type	Clip mounting
Assembly note	Magnet attachment available as an accessory
	Screw fixings available as accessories
Mounting position	any

# PLD E 400 W 250 - LED enclosure light

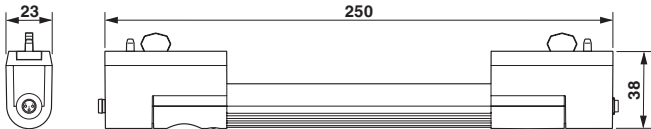


2702221

<https://www.phoenixcontact.com/us/products/2702221>

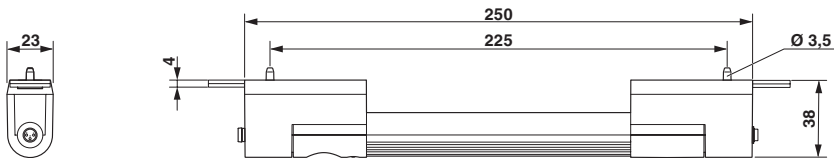
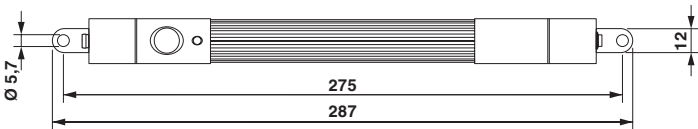
## Drawings

Dimensional drawing



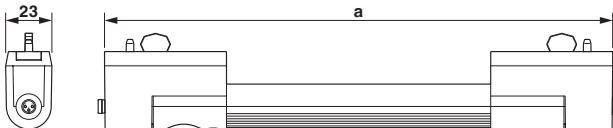
Dimensional drawing

Dimensional drawing



Dimensional drawing for screw mounting

Dimensional drawing



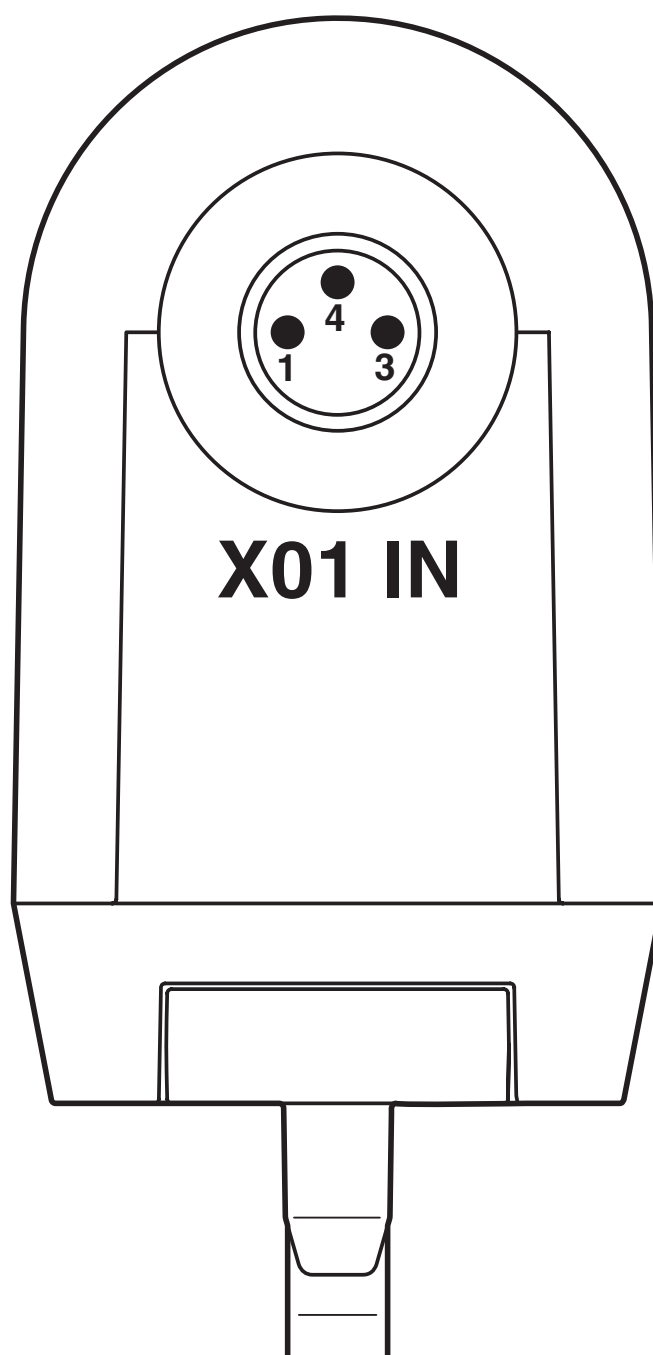
# PLD E 400 W 250 - LED enclosure light

2702221

<https://www.phoenixcontact.com/us/products/2702221>



Connection diagram



Connection of the supply voltage of a light

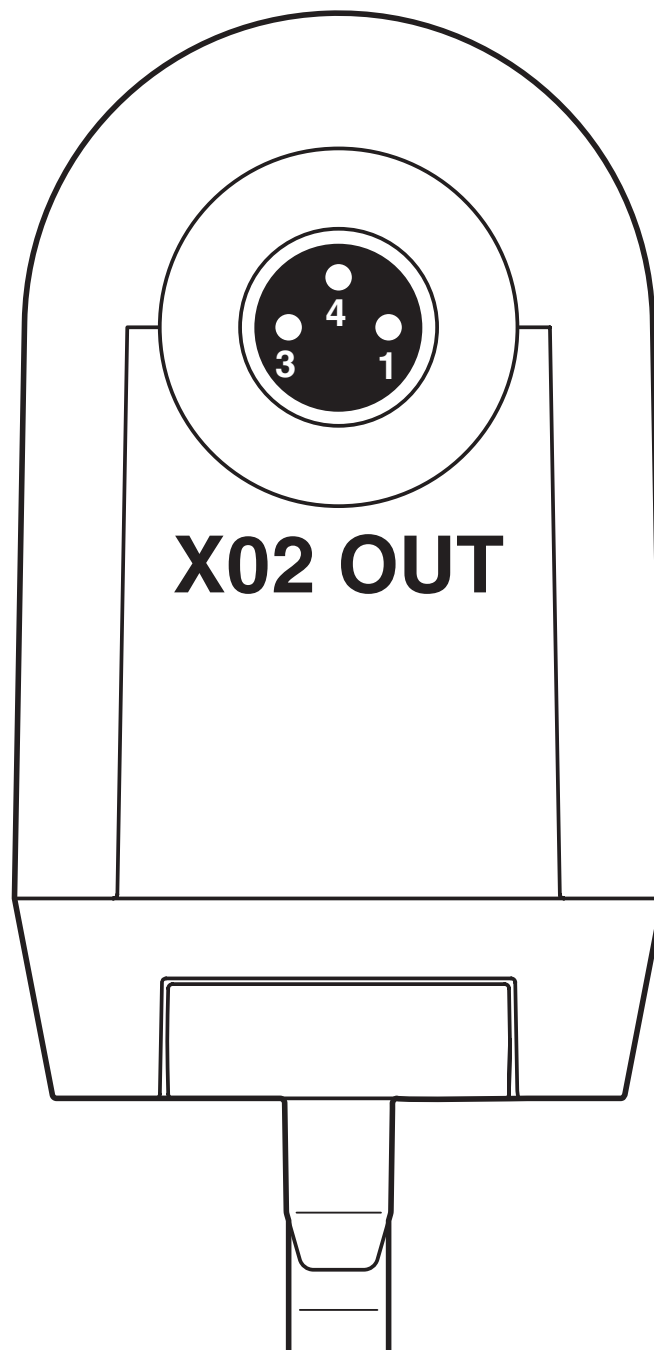
# PLD E 400 W 250 - LED enclosure light

2702221

<https://www.phoenixcontact.com/us/products/2702221>



Connection diagram



Forwarding of the supply voltage with the series connection of lights

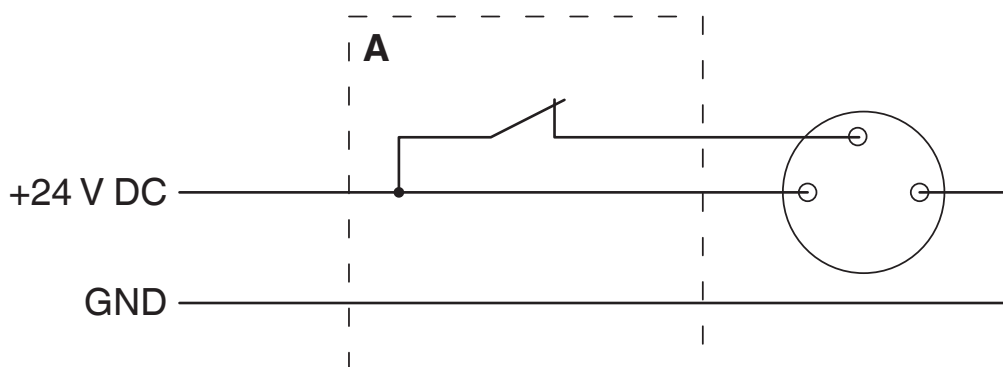
# PLD E 400 W 250 - LED enclosure light

2702221

<https://www.phoenixcontact.com/us/products/2702221>



Connection diagram



Connection of the light using a door position switch (A)

Schematic diagram



Connection of a light

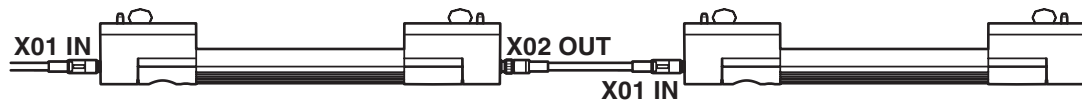
# PLD E 400 W 250 - LED enclosure light



2702221

<https://www.phoenixcontact.com/us/products/2702221>

Schematic diagram



Series connection of two lights



# PLD E 400 W 250 - LED enclosure light



2702221

<https://www.phoenixcontact.com/us/products/2702221>

## Approvals

📄 To download certificates, visit the product detail page: <https://www.phoenixcontact.com/us/products/2702221>



**EAC**

Approval ID: TR\_TS\_D\_12879-22



**UL Listed**

Approval ID: E362966



**cUL Listed**

Approval ID: E362966

# PLD E 400 W 250 - LED enclosure light



2702221

<https://www.phoenixcontact.com/us/products/2702221>

## Classifications

### ECLASS

ECLASS-13.0	27182808
ECLASS-15.0	27182808

### ETIM

ETIM 9.0	EC000321
----------	----------

### UNSPSC

UNSPSC 21.0	32151500
-------------	----------

# PLD E 400 W 250 - LED enclosure light



2702221  
<https://www.phoenixcontact.com/us/products/2702221>

## Environmental product compliance

EU RoHS	
Fulfills EU RoHS substance requirements	Yes, No exemptions
China RoHS	
Environment friendly use period (EFUP)	EFUP-E
	No hazardous substances above the limits
EU REACH SVHC	
REACH candidate substance (CAS No.)	No substance above 0.1 wt%

Phoenix Contact 2025 © - all rights reserved  
<https://www.phoenixcontact.com>

Phoenix Contact USA  
586 Fulling Mill Road  
Middletown, PA 17057, United States  
(+717) 944-1300  
[info@phoenixcon.com](mailto:info@phoenixcon.com)