

2700091

<https://www.phoenixcontact.com/us/products/2700091>

Please be informed that the data shown in this PDF document is generated from our online catalog. Please find the complete data in the user documentation. Our general terms of use for downloads are valid.

Connection element with spring-cage terminal blocks for base mounting



Commercial data

Item number	2700091
Packing unit	1 pc
Minimum order quantity	1 pc
Sales key	DR07
Product key	DRL116
GTIN	4046356490146
Weight per piece (including packing)	91.1 g
Weight per piece (excluding packing)	86 g
Customs tariff number	85319000
Country of origin	DE

PSD-S CE-SM SPRING - Connection element



2700091
<https://www.phoenixcontact.com/us/products/2700091>

Technical data

Notes

Note on application	
Note on application	Only for industrial use

Product properties

Product type	Assembly element
Product family	PSD-S
Scope of supply	End cover and seal
	End cover and seal
Number of mountable signal elements	max. 5

Connection data

without ferrule	
Connection method	Spring-cage connection
Conductor cross-section, flexible	0.5 mm² ... 1.5 mm²
Conductor cross-section, flexible [AWG]	... 15
Stripping length	7 mm

With ferrule	
Connection method	Spring-cage connection
Conductor cross-section, flexible	0.25 mm² ... 1.5 mm²
Conductor cross-section, flexible [AWG]	... 15
Stripping length	7 mm

solid	
Connection method	Spring-cage connection
Conductor cross-section, rigid	0.5 mm² ... 1.5 mm²
Stripping length	7 mm

Dimensions

Dimensional drawing	
Height	27 mm
Diameter	69 mm

PSD-S CE-SM SPRING - Connection element



2700091

<https://www.phoenixcontact.com/us/products/2700091>

Material specifications

Color	black
Material	PA-GF

Environmental and real-life conditions

Ambient conditions

Degree of protection	IP65, when installed
Ambient temperature (operation)	-30 °C ... 50 °C

Mounting

Mounting type	Base mounting (Seal pre-installed for each element)
Mounting position	any

PSD-S CE-SM SPRING - Connection element

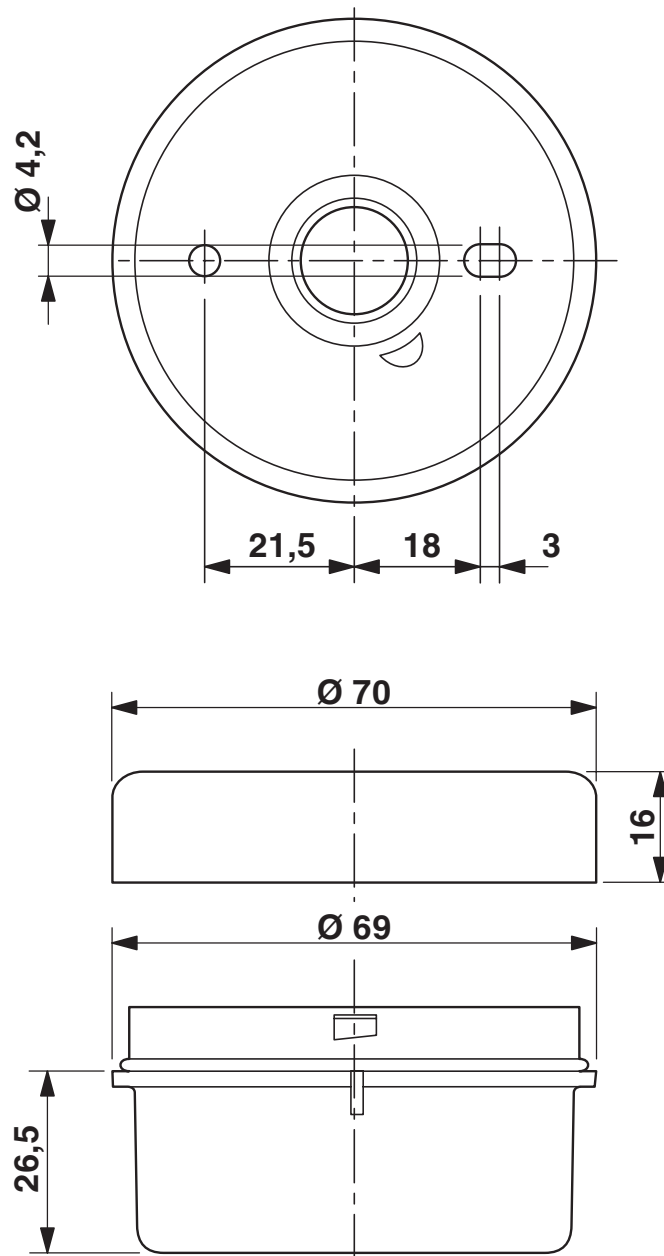
2700091

<https://www.phoenixcontact.com/us/products/2700091>



Drawings

Dimensional drawing



PSD-S CE-SM SPRING - Connection element



2700091

<https://www.phoenixcontact.com/us/products/2700091>

Approvals

🔗 To download certificates, visit the product detail page: <https://www.phoenixcontact.com/us/products/2700091>



cULus Listed

Approval ID: E123528

PSD-S CE-SM SPRING - Connection element



2700091

<https://www.phoenixcontact.com/us/products/2700091>

Classifications

ECLASS

ECLASS-13.0	27371232
ECLASS-15.0	27371232

ETIM

ETIM 9.0	EC001152
----------	----------

UNSPSC

UNSPSC 21.0	46171600
-------------	----------

PSD-S CE-SM SPRING - Connection element



2700091
<https://www.phoenixcontact.com/us/products/2700091>

Environmental product compliance

EU RoHS	
Fulfills EU RoHS substance requirements	Yes, No exemptions
China RoHS	
Environment friendly use period (EFUP)	EFUP-E
	No hazardous substances above the limits
EU REACH SVHC	
REACH candidate substance (CAS No.)	No substance above 0.1 wt%

Phoenix Contact 2025 © - all rights reserved
<https://www.phoenixcontact.com>

Phoenix Contact USA
586 Fulling Mill Road
Middletown, PA 17057, United States
(+717) 944-1300
info@phoenixcon.com