

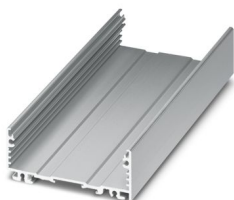
# UM-ALU 4-72 PROFILE 42,5 - Profile



2200917

<https://www.phoenixcontact.com/us/products/2200917>

Please be informed that the data shown in this PDF document is generated from our online catalog. Please find the complete data in the user documentation. Our general terms of use for downloads are valid.



Press-drawn section housings, Screw mounting, Basic profile, profile width (internal): 72 mm, profile width (external): 75 mm, length: 42.5 mm, depth: 29.4 mm

## Your advantages

- Aluminum extruded profile
- Variety of connection technology
- Can be mounted on the DIN rail
- Available in lengths from 42.5 mm ... 990 mm, can be cut to any length
- Available in overall widths of 75 mm and 105 mm
- EMC protection

## Commercial data

Item number	2200917
Packing unit	1 pc
Minimum order quantity	1 pc
Sales key	AC14
Product key	ACHDFA
GTIN	4046356716505
Weight per piece (including packing)	34.5 g
Weight per piece (excluding packing)	33.9 g
Customs tariff number	76042990
Country of origin	DE

# UM-ALU 4-72 PROFILE 42,5 - Profile

2200917

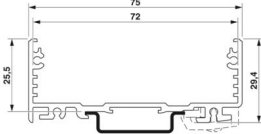
<https://www.phoenixcontact.com/us/products/2200917>

## Technical data

### Product properties

Product type	Component housing lower part
Housing type	Press-drawn section housings
Housing series	UM-ALU
Product family	UM-ALU 4-72
Ventilation openings present	no

### Dimensions

Dimensional drawing	
Depth	29.4 mm
Depth from top edge of DIN rail	25.5 mm
Length	42.5 mm

### External dimensions

Profile width (external)	75 mm
--------------------------	-------

### Internal dimensions

Profile width (internal)	72 mm
--------------------------	-------

### PCB design

PCB thickness	1.44 mm ... 2 mm
---------------	------------------

### Material specifications

Color (Housing)	aluminum color
Material	Aluminum (anodized)
Surface characteristics	anodized

### Environmental and real-life conditions

#### Ambient conditions

Max. IP code to attain	IP40
Ambient temperature (operation)	-40 °C ... 105 °C (depending on power dissipation)
Ambient temperature (storage/transport)	-40 °C ... 55 °C
Ambient temperature (assembly)	-5 °C ... 100 °C

### PCB data

Number of PCB holders	3
Type of PCB mount	Slot
PCB surface	2742 mm² ... 3230 mm² (TOP in conjunction with side elements COVER...AL)

# UM-ALU 4-72 PROFILE 42,5 - Profile



2200917

<https://www.phoenixcontact.com/us/products/2200917>

	2773 mm² ... 2868 mm² (BOTTOM in conjunction with side elements COVER...AL)
	2738 mm² ... 3226 mm² (TOP in conjunction with side elements COVER...PA)
	2881 mm² ... 3226 mm² (BOTTOM in conjunction with side elements COVER...PA)
Thickness of the PCB	1.44 mm ... 2 mm

## Mounting

Mounting type	Screw mounting
Mounting position	parallel to the DIN rail

## Packaging specifications

Type of packaging	packed in cardboard
Outer packaging type	Carton

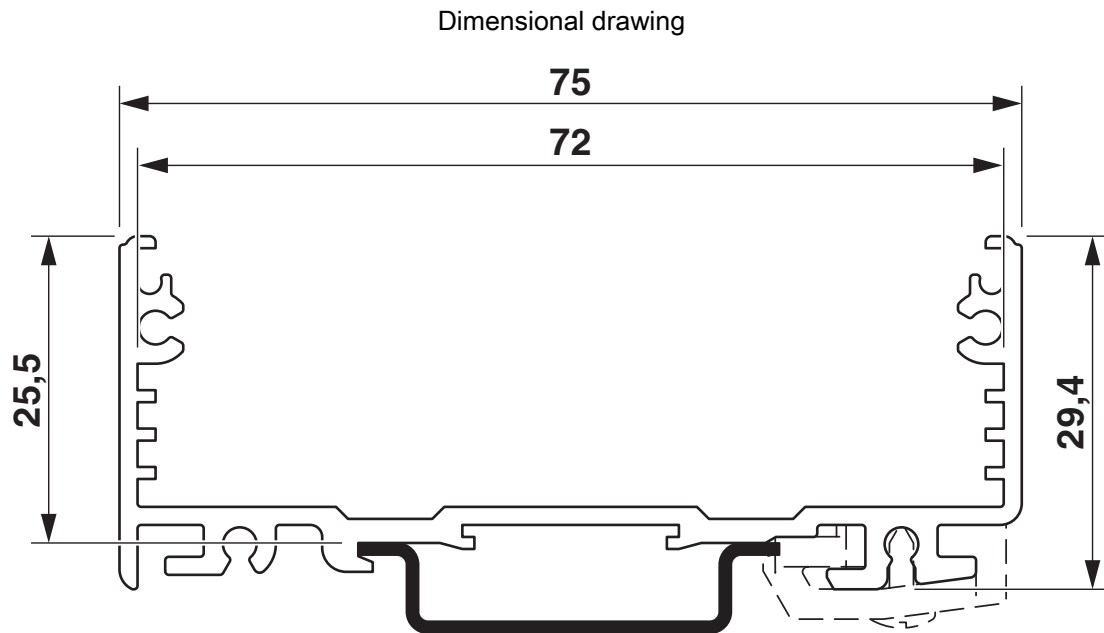
# UM-ALU 4-72 PROFILE 42,5 - Profile

2200917

<https://www.phoenixcontact.com/us/products/2200917>



## Drawings



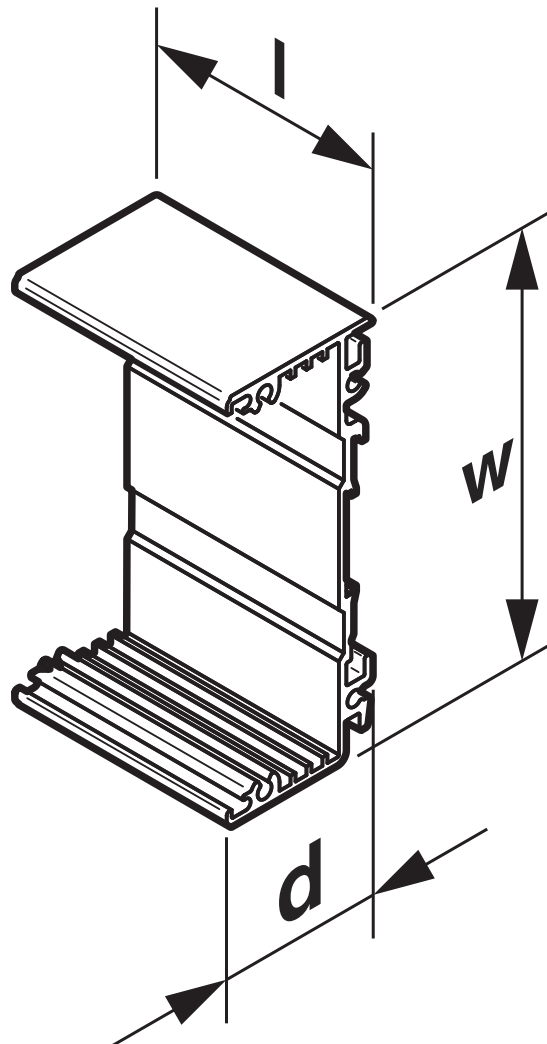
# UM-ALU 4-72 PROFILE 42,5 - Profile

2200917

<https://www.phoenixcontact.com/us/products/2200917>



Dimensional drawing



# UM-ALU 4-72 PROFILE 42,5 - Profile



2200917

<https://www.phoenixcontact.com/us/products/2200917>

## Classifications

### ECLASS

ECLASS-13.0	27190601
ECLASS-15.0	27190601

### ETIM

ETIM 9.0	EC002779
----------	----------

### UNSPSC

UNSPSC 21.0	31261500
-------------	----------

# UM-ALU 4-72 PROFILE 42,5 - Profile



2200917

<https://www.phoenixcontact.com/us/products/2200917>

## Environmental product compliance

EU RoHS	
Fulfills EU RoHS substance requirements	Yes, No exemptions
China RoHS	
Environment friendly use period (EFUP)	EFUP-E
	No hazardous substances above the limits
EU REACH SVHC	
REACH candidate substance (CAS No.)	No substance above 0.1 wt%

Phoenix Contact 2025 © - all rights reserved  
<https://www.phoenixcontact.com>

Phoenix Contact USA  
586 Fulling Mill Road  
Middletown, PA 17057, United States  
(+717) 944-1300  
[info@phoenixcon.com](mailto:info@phoenixcon.com)