

HC-STA-D07-BAWS-M25-EL-AL - Housing



1672260

<https://www.phoenixcontact.com/us/products/1672260>

Please be informed that the data shown in this PDF document is generated from our online catalog. Please find the complete data in the user documentation. Our general terms of use for downloads are valid.



Screw-in housing D7, with single locking latch, material: Die-cast aluminum, salt water resistant, height: 38.5 mm, seal: yes, Standard, angled

Commercial data

Item number	1672260
Packing unit	1 pc
Minimum order quantity	1 pc
Sales key	BF56
Product key	AF7APF
GTIN	4067923220720
Weight per piece (including packing)	45 g
Weight per piece (excluding packing)	45 g
Customs tariff number	85389099
Country of origin	CN

HC-STA-D07-BAWS-M25-EL-AL - Housing



1672260

<https://www.phoenixcontact.com/us/products/1672260>

Technical data

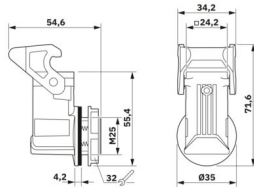
Notes

General	for contact inserts HC-A03, A04, D07, D08, Q02, Q03, Q04, Q05, Q07, Q12
---------	---

Product properties

Product type	Housing with locking latch
Housing type	Screw-in housing
Application	Standard
Type	D7
Seal present	yes
Shielded	no

Dimensions

Dimensional drawing	
Height	38.5 mm
Thread pitch	1.5 mm

Material specifications

Flammability rating according to UL 94	V0 (Interlock)
Seal material	NBR
Housing material	Die-cast aluminum, salt water resistant
Housing surface material	uncoated
Locking latch material	PA

Mechanical properties

Mechanical data

Locking type	Latch
--------------	-------

Connection data

Tightening torque	7.5 Nm ... 10 Nm
-------------------	------------------

Mounting

Assembly note	To ensure anti-rotation protection of the housing, use the attached mounting cutout. Alternatively, you can use a consistently round panel cutout. However, this cutout cannot guarantee anti-rotation protection.
---------------	--

HC-STA-D07-BAWS-M25-EL-AL - Housing

1672260

<https://www.phoenixcontact.com/us/products/1672260>



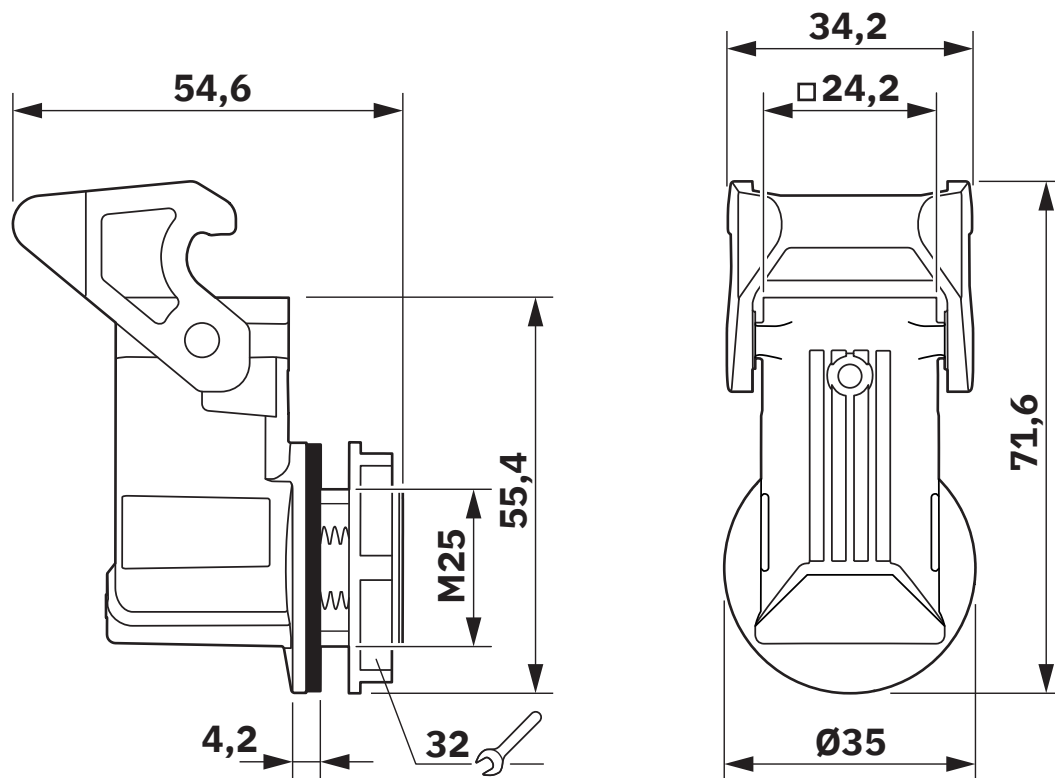
Environmental and real-life conditions

Ambient conditions

Degree of protection	IP66
	IP67
Impact strength	IK06
Ambient temperature (operation)	-40 °C ... 125 °C

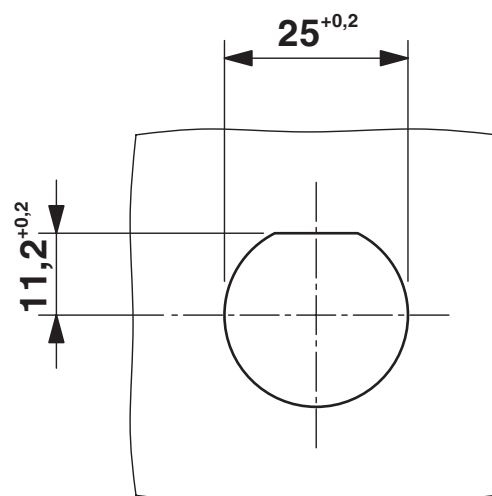
Drawings

Dimensional drawing



Dimensional drawing

Dimensional drawing



Panel cutout

HC-STA-D07-BAWS-M25-EL-AL - Housing



1672260

<https://www.phoenixcontact.com/us/products/1672260>

Classifications

ECLASS

ECLASS-13.0	27440202
ECLASS-15.0	27440202

ETIM

ETIM 9.0	EC000437
----------	----------

UNSPSC

UNSPSC 21.0	31261500
-------------	----------

Environmental product compliance

EU RoHS

Fulfills EU RoHS substance requirements	Yes
Exemption	6(c)

China RoHS

Environment friendly use period (EFUP)	EFUP-50
	An article-related China RoHS declaration table can be found in the download area for the respective article under "Manufacturer declaration". For all articles with EFUP-E, no China RoHS declaration table issued and required.

EU REACH SVHC

REACH candidate substance (CAS No.)	Lead(CAS: 7439-92-1)
-------------------------------------	----------------------