

HC-STA-D07-BAWS-M25-PL-BK - Housing



1672251
<https://www.phoenixcontact.com/us/products/1672251>

Please be informed that the data shown in this PDF document is generated from our online catalog. Please find the complete data in the user documentation. Our general terms of use for downloads are valid.



Screw-in housing D7, with single locking latch, material: PA, height: 41.5 mm, seal: yes, Standard, angled

Commercial data

Item number	1672251
Packing unit	1 pc
Minimum order quantity	1 pc
Sales key	BF56
Product key	AF7APD
GTIN	4067923220461
Weight per piece (including packing)	26.5 g
Weight per piece (excluding packing)	26.5 g
Customs tariff number	85389099
Country of origin	CN

HC-STA-D07-BAWS-M25-PL-BK - Housing



1672251

<https://www.phoenixcontact.com/us/products/1672251>

Technical data

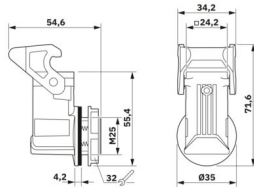
Notes

General	for contact inserts HC-A03, A04, D07, D08, Q02, Q03, Q04, Q05, Q07, Q12
---------	---

Product properties

Product type	Housing with locking latch
Housing type	Screw-in housing
Application	Standard
Type	D7
Seal present	yes
Shielded	no

Dimensions

Dimensional drawing	
Height	41.5 mm
Thread pitch	1.5 mm

Material specifications

Flammability rating according to UL 94	V0 (Housing) V0 (Interlock)
Seal material	NBR
Housing material	PA
Locking latch material	PA

Mechanical properties

Mechanical data	
Locking type	Latch

Connection data

Tightening torque	5 Nm ... 7.5 Nm (For M3 mounting screws on the panel-mount base)
-------------------	--

Mounting

Assembly note	To ensure anti-rotation protection of the housing, use the attached mounting cutout. Alternatively, you can use a consistently round panel cutout. However, this cutout cannot guarantee anti-rotation protection.
---------------	--

HC-STA-D07-BAWS-M25-PL-BK - Housing

1672251

<https://www.phoenixcontact.com/us/products/1672251>



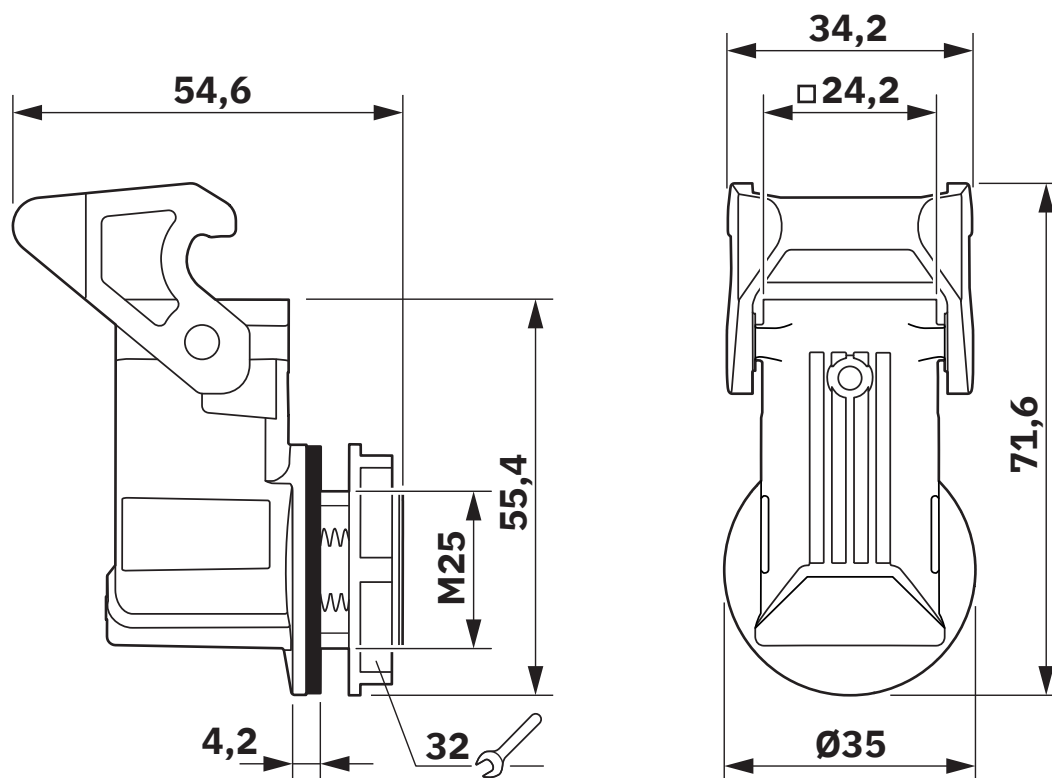
Environmental and real-life conditions

Ambient conditions

Degree of protection	IP66
Impact strength	IK06
Ambient temperature (operation)	-40 °C ... 125 °C

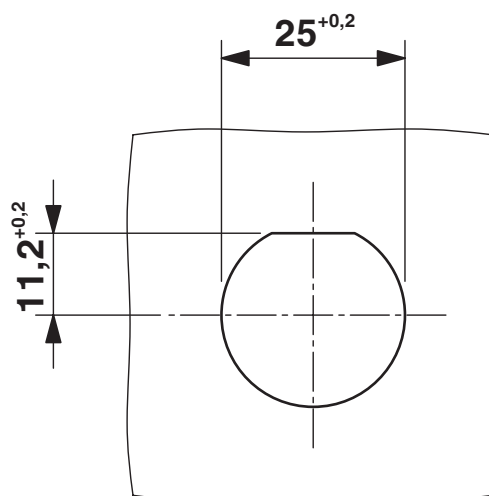
Drawings

Dimensional drawing



Dimensional drawing

Dimensional drawing



Panel cutout

HC-STA-D07-BAWS-M25-PL-BK - Housing



1672251

<https://www.phoenixcontact.com/us/products/1672251>

Classifications

ECLASS

ECLASS-13.0	27440202
ECLASS-15.0	27440202

ETIM

ETIM 9.0	EC000437
----------	----------

UNSPSC

UNSPSC 21.0	31261500
-------------	----------

HC-STA-D07-BAWS-M25-PL-BK - Housing



1672251
<https://www.phoenixcontact.com/us/products/1672251>

Environmental product compliance

EU RoHS	
Fulfills EU RoHS substance requirements	Yes, No exemptions
China RoHS	
Environment friendly use period (EFUP)	EFUP-E
	No hazardous substances above the limits
EU REACH SVHC	
REACH candidate substance (CAS No.)	No substance above 0.1 wt%

Phoenix Contact 2025 © - all rights reserved
<https://www.phoenixcontact.com>

Phoenix Contact USA
586 Fulling Mill Road
Middletown, PA 17057, United States
(+717) 944-1300
info@phoenixcon.com