

# VS-08-A-RJ45/MOD-1-R-IP67 BK - Panel-mount frame



1658053

<https://www.phoenixcontact.com/us/products/1658053>

Please be informed that the data shown in this PDF document is generated from our online catalog. Please find the complete data in the user documentation. Our general terms of use for downloads are valid.



RJ45 panel mounting frame, IP67, for modular socket inserts (Keystone), for round panel cutout, with grommet, with thread and union nut, color: black

## Commercial data

Item number	1658053
Packing unit	5 pc
Minimum order quantity	5 pc
Sales key	AB17
Product key	ABNNDB
GTIN	4046356144346
Weight per piece (including packing)	9.74 g
Weight per piece (excluding packing)	9.64 g
Customs tariff number	85389099
Country of origin	DE

1658053

<https://www.phoenixcontact.com/us/products/1658053>

## Technical data

### Product properties

Product type	Panel-mount frame
Application	Modular insert
Type	Version 6
Connection profile	RJ45
Number of slots	1

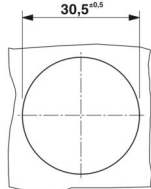
### Insulation characteristics

Degree of pollution	2
---------------------	---

### Electrical properties

Transmission medium	Copper
---------------------	--------

### Dimensions

Dimensional drawing	
Width	36 mm
Height	36 mm
Depth	16.5 mm
Length	16.4 mm

### Material specifications

Color	black
Material	Plastic
Flammability rating according to UL 94	V0
Seal material	NBR
Seal material, flat gasket	NBR
Housing material	Plastic
Housing surface material	PA, light gray
Contact surface material	Au/Ni
Contact carrier material	Polyester GF

### Mechanical properties

#### Mechanical data

Insertion/withdrawal cycles	≥ 1000
-----------------------------	--------

# VS-08-A-RJ45/MOD-1-R-IP67 BK - Panel-mount frame



1658053

<https://www.phoenixcontact.com/us/products/1658053>

## Environmental and real-life conditions

### Ambient conditions

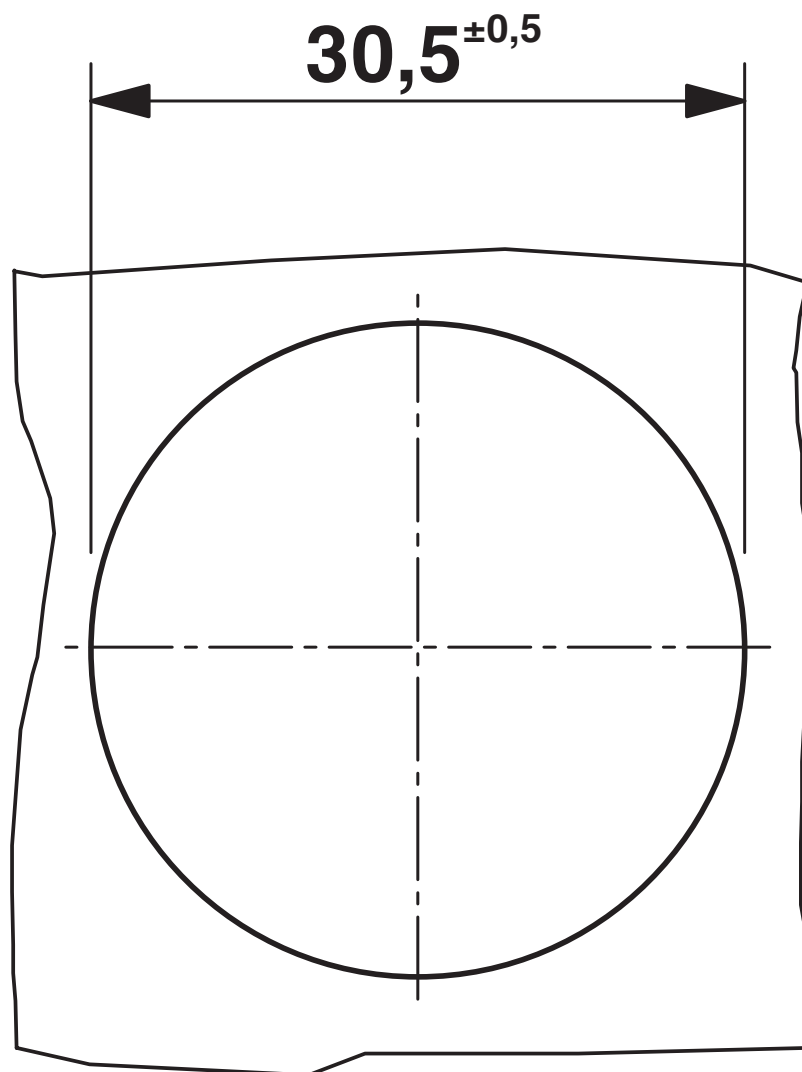
Degree of protection	IP65/IP67
Ambient temperature (operation)	-20 °C ... 70 °C
Ambient temperature (storage/transport)	-40 °C ... 70 °C
Ambient temperature (assembly)	-5 °C ... 55 °C

## Mounting

Mounting type	Front mounting
---------------	----------------

## Drawings

Dimensional drawing



Mounting cutout

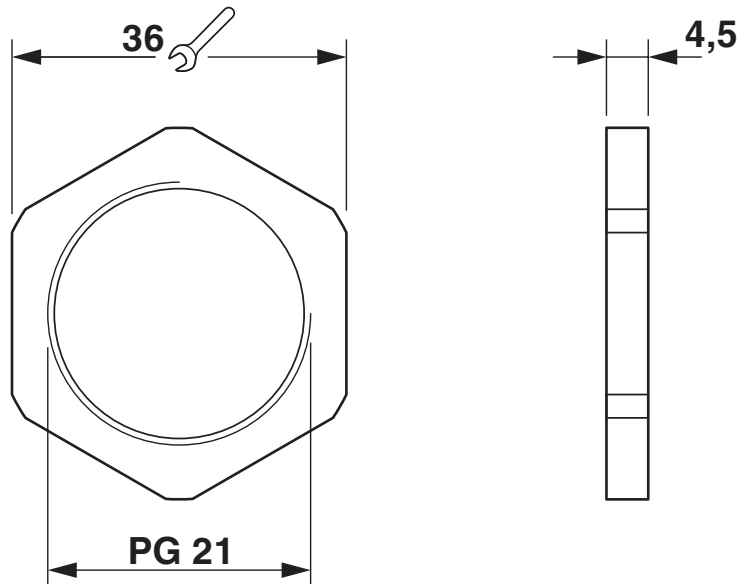
# VS-08-A-RJ45/MOD-1-R-IP67 BK - Panel-mount frame



1658053

<https://www.phoenixcontact.com/us/products/1658053>

Dimensional drawing



Union nut

1658053

<https://www.phoenixcontact.com/us/products/1658053>

## Classifications

### ECLASS

ECLASS-13.0	27440392
ECLASS-15.0	27440392

### ETIM

ETIM 9.0	EC002943
----------	----------

### UNSPSC

UNSPSC 21.0	39121400
-------------	----------

# VS-08-A-RJ45/MOD-1-R-IP67 BK - Panel-mount frame



1658053

<https://www.phoenixcontact.com/us/products/1658053>

## Environmental product compliance

EU RoHS	
Fulfills EU RoHS substance requirements	Yes, No exemptions
China RoHS	
Environment friendly use period (EFUP)	EFUP-E
	No hazardous substances above the limits
EU REACH SVHC	
REACH candidate substance (CAS No.)	No substance above 0.1 wt%

Phoenix Contact 2025 © - all rights reserved  
<https://www.phoenixcontact.com>

Phoenix Contact USA  
586 Fulling Mill Road  
Middletown, PA 17057, United States  
(+717) 944-1300  
[info@phoenixcon.com](mailto:info@phoenixcon.com)