

# RC-63P1N1290R9 - Coupler connector



1603599

<https://www.phoenixcontact.com/us/products/1603599>

Please be informed that the data shown in this PDF document is generated from our online catalog. Please find the complete data in the user documentation. Our general terms of use for downloads are valid.



Coupler connector, No. of pos.: 6+3, Direction of rotation: Standard, contact connection type: Pin, Solder cup, coding: N. This product is in the process of being discontinued. This product must no longer be considered for new projects. Please contact your sales representative for alternatives.

## Commercial data

Item number	1603599
Packing unit	20 pc
Minimum order quantity	1 pc
Note	Made to order (non-returnable)
Sales key	AB31
Product key	ABRAFG
GTIN	4046356246224
Weight per piece (including packing)	72.419 g
Weight per piece (excluding packing)	72.419 g
Customs tariff number	85366990
Country of origin	DE

# RC-63P1N1290R9 - Coupler connector



1603599

<https://www.phoenixcontact.com/us/products/1603599>

## Technical data

### Product properties

Product type	Circular connector (cable-side)
Thread type	M23

### Material specifications

Flammability rating according to UL 94	V0
--	----

### Connector

#### Insulating body

Coding	N
Material (Insulating body)	PBT
Material (Contact)	CuZn
Material (Contact surface)	Ni/Au
Insertion/withdrawal cycles	50
Connection method	Solder cup
Contact switching type	Pin
Application	Signal
Number of positions	9
Direction of rotation	Standard
Connection profile	6+3
Number Contact (Contact group 1)	3
Diameter Contact (Contact group 1)	2 mm
Litz wire cross-section min. Contact (Contact group 1)	0.08 mm <sup>2</sup>
Litz wire cross-section max. Contact (Contact group 1)	2.5 mm <sup>2</sup>
Rated current Contact (Contact group 1)	20 A (for max. connection cross section)
Rated voltage Contact (Contact group 1)	48 V AC
	74 V DC
Rated surge voltage	1.5 kV
Overvoltage category	III
Degree of pollution	3
Number Contact (Contact group 2)	6
Diameter Contact (Contact group 2)	1 mm
Litz wire cross-section min. Contact (Contact group 2)	0.08 mm <sup>2</sup>
Litz wire cross-section max. Contact (Contact group 2)	1 mm <sup>2</sup>
Rated current Contact (Contact group 2)	8 A

### Environmental and real-life conditions

#### Ambient conditions

Degree of protection	IP67
----------------------	------

# RC-63P1N1290R9 - Coupler connector

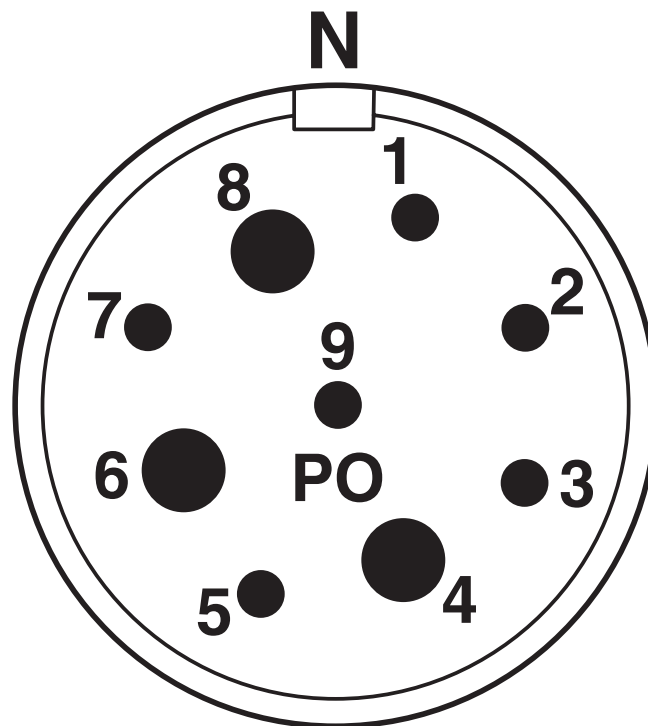
1603599

<https://www.phoenixcontact.com/us/products/1603599>



## Drawings

Schematic diagram



Connector pin assignment

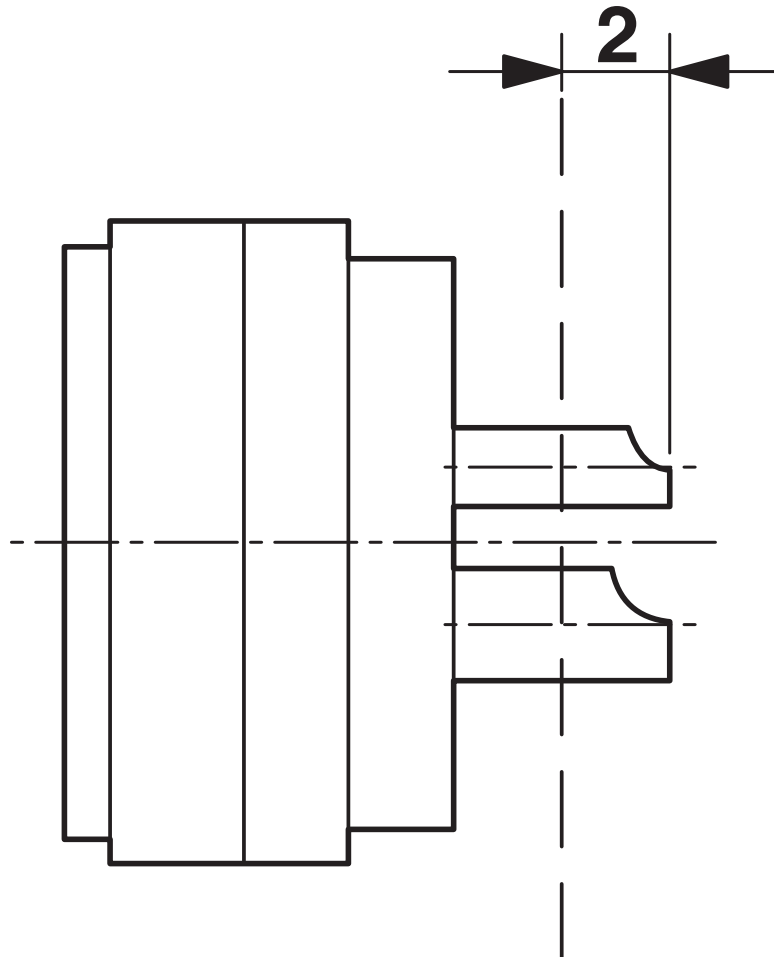
# RC-63P1N1290R9 - Coupler connector



1603599

<https://www.phoenixcontact.com/us/products/1603599>

Schematic diagram



Dimensional drawing

# RC-63P1N1290R9 - Coupler connector



1603599

<https://www.phoenixcontact.com/us/products/1603599>

## Classifications

### ECLASS

ECLASS-13.0	27440116
ECLASS-15.0	27440116

### ETIM

ETIM 9.0	EC002635
----------	----------

### UNSPSC

UNSPSC 21.0	39121400
-------------	----------

# RC-63P1N1290R9 - Coupler connector



1603599

<https://www.phoenixcontact.com/us/products/1603599>

## Environmental product compliance

### EU RoHS

Fulfills EU RoHS substance requirements	Yes
Exemption	6(c)

### China RoHS

Environment friendly use period (EFUP)	EFUP-50
	An article-related China RoHS declaration table can be found in the download area for the respective article under "Manufacturer declaration". For all articles with EFUP-E, no China RoHS declaration table issued and required.

### EU REACH SVHC

REACH candidate substance (CAS No.)	Lead(CAS: 7439-92-1)
SCIP	6882f193-5649-41c2-8e98-b2555f9abab5

Phoenix Contact 2025 © - all rights reserved

<https://www.phoenixcontact.com>

Phoenix Contact USA  
586 Fulling Mill Road  
Middletown, PA 17057, United States  
(+717) 944-1300  
[info@phoenixcon.com](mailto:info@phoenixcon.com)