

1521611

<https://www.phoenixcontact.com/us/products/1521611>

Please be informed that the data shown in this PDF document is generated from our online catalog. Please find the complete data in the user documentation. Our general terms of use for downloads are valid.



Commercial data

Item number	1521611
Packing unit	5 pc
Minimum order quantity	5 pc
Sales key	BF74
Product key	AF2IGA
GTIN	4063151986643
Weight per piece (including packing)	22.22 g
Weight per piece (excluding packing)	120 g
Country of origin	CZ

# SACC-AHDP06-9PFS-C-NW17-IV - Cable connector



1521611

<https://www.phoenixcontact.com/us/products/1521611>

## Technical data

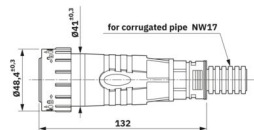
### Notes

General	AHDP06-24-91S-BS2-K16M
General	Connector kit includes connector with conduit adapter NW17, size 8 (16 mm <sup>2</sup> ) contacts (2 pieces), size 12 (12-14 AWG) contacts (2 pieces), size 16 (16-20 AWG) contacts (4 pieces), size 16 contact pre-assembled and bridged (1 piece)
Trade restriction	
CE note	The products are offered exclusively for export outside the EU and the European Economic Area.

### Product properties

Product type	Cable connector
Number of positions	9
Shielded	no

### Dimensions

Dimensional drawing	
Length	132 mm

### Mechanical properties

Mechanical data	
Insertion/withdrawal cycles	min. 100

### Material specifications

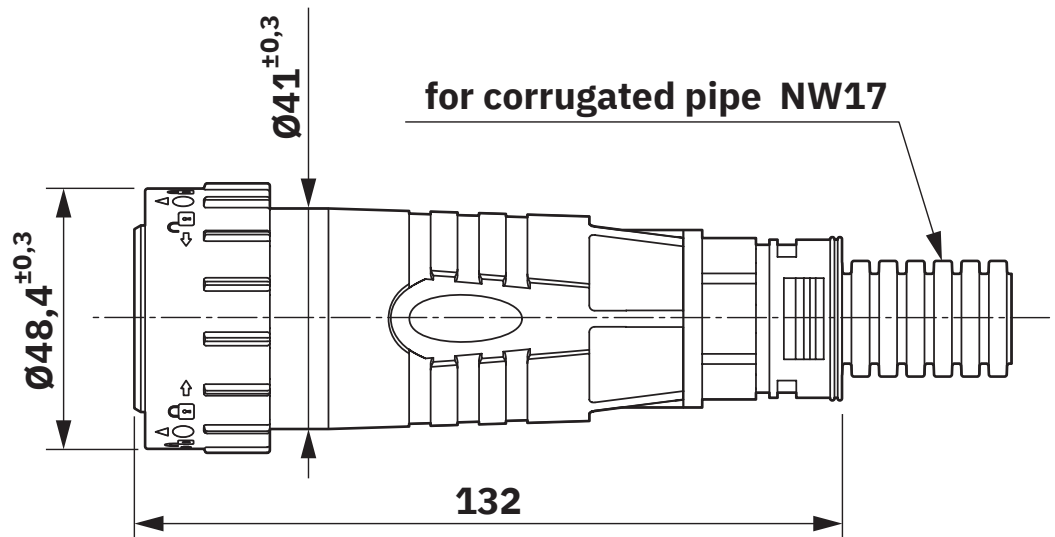
Housing material	PA
Contact material	Copper alloy
Contact surface material	nickel-plated

### Environmental and real-life conditions

Ambient conditions	
Degree of protection	IP67 (in mated condition) IP69K (in mated condition)
Ambient temperature (operation)	-40 °C ... 125 °C

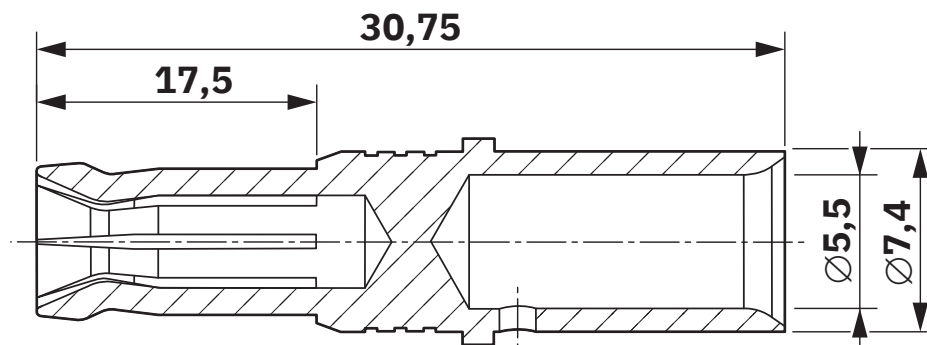
## Drawings

Dimensional drawing



AHDP06-24-91S-BS2 connector with conduit adapter NW17

Dimensional drawing

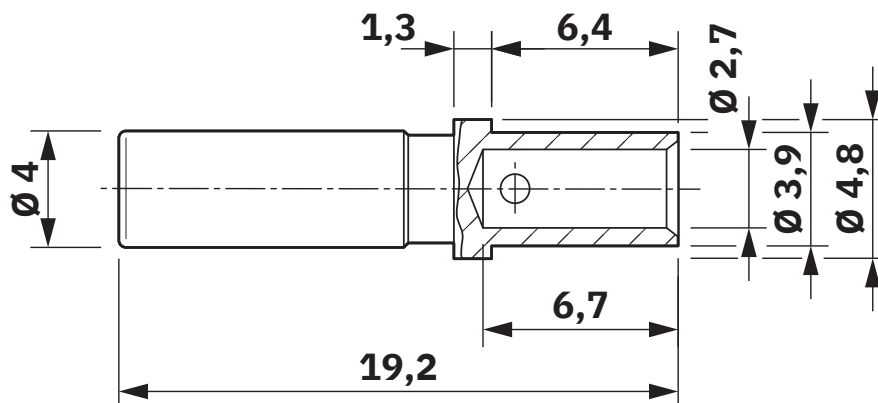


VN02 036 0028 6 size 8 female contact 16 mm<sup>2</sup>

1521611

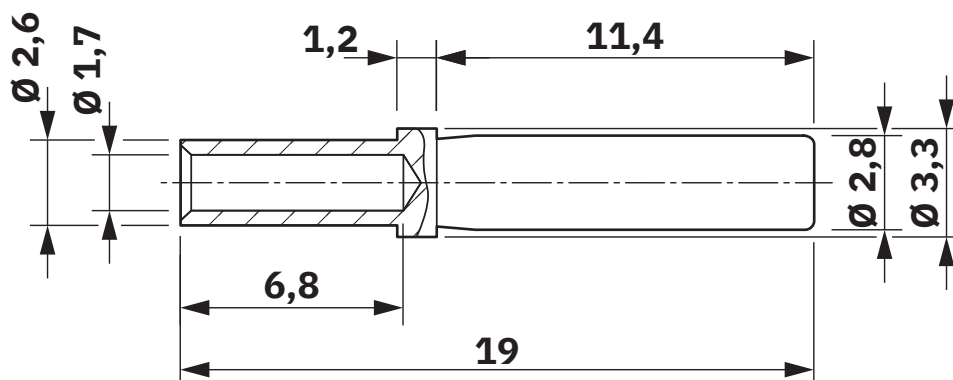
<https://www.phoenixcontact.com/us/products/1521611>

Dimensional drawing



AT62-203-12141 size 12 female contact

Dimensional drawing

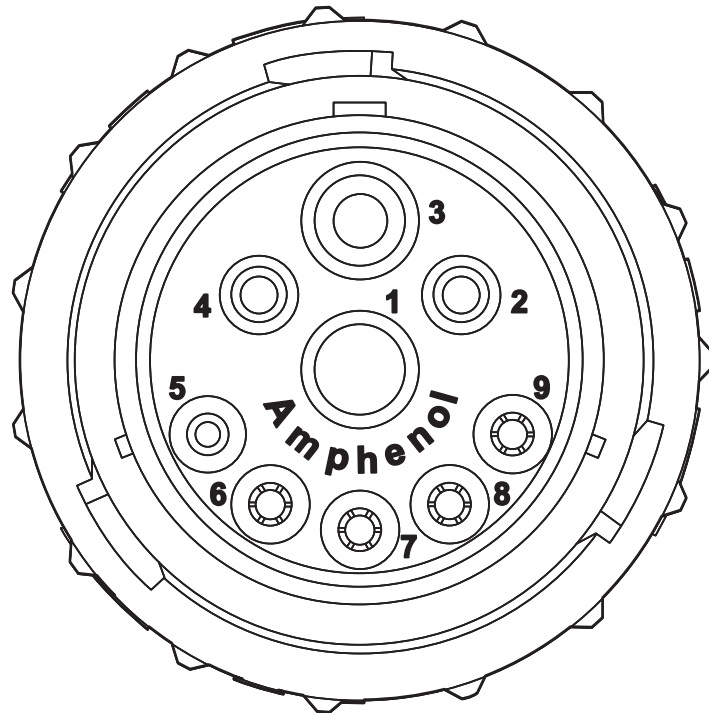


AT62-201-16141 size 16 female contact

1521611

<https://www.phoenixcontact.com/us/products/1521611>

Schematic diagram



AHDDP06-24-91S pin assignment

# SACC-AHDP06-9PFS-C-NW17-IV - Cable connector



1521611

<https://www.phoenixcontact.com/us/products/1521611>

## Classifications

### ECLASS

ECLASS-15.0	27440116
ECLASS-13.0	27440116

### ETIM

ETIM 9.0	EC002635
----------	----------

Phoenix Contact 2025 © - all rights reserved  
<https://www.phoenixcontact.com>

Phoenix Contact USA  
586 Fulling Mill Road  
Middletown, PA 17057, United States  
(+717) 944-1300  
[info@phoenixcon.com](mailto:info@phoenixcon.com)