

FL SWITCH 1100T-8POE-2SFP - Industrial Ethernet Switch



1467018

<https://www.phoenixcontact.com/us/products/1467018>

Please be informed that the data shown in this PDF document is generated from our online catalog. Please find the complete data in the user documentation. Our general terms of use for downloads are valid.



PoE+ Ethernet switch conforms to IEEE 802.3af/at, includes eight PoE RJ45 ports with 10/100/1000 Mbps on all ports, 2 SFP ports, automatic data transmission speed detection, autocrossing function, and QoS with a 120 W power budget

Your advantages

- RJ45 ports support a transmission speed of 10/100/1000 Mbps
- QoS-prioritized (Quality of Service) messages
- Local diagnostic indicators with LEDs
- PROFINET PTCP filter for reliable communication on PROFINET networks
- Enhanced traffic prioritization for automation protocols
- Energy-efficient Ethernet in accord. with IEEE 802.3az
- PROFINET Conformance Class A for real-time data exchange
- Auto negotiation and autocrossing detection simplifies installation and setup
- Automatic detection of IEEE 802.3at or 802.3af powered devices
- POE status LED per port
- Jumbo frame support (frame size up to 9216 bytes/frame)

Commercial data

Item number	1467018
Packing unit	1 pc
Minimum order quantity	1 pc
Sales key	DN18
Product key	DNN115
GTIN	4063151862657
Weight per piece (including packing)	851 g
Weight per piece (excluding packing)	766 g
Customs tariff number	85176200
Country of origin	TW

FL SWITCH 1100T-8POE-2SFP - Industrial Ethernet Switch



1467018

<https://www.phoenixcontact.com/us/products/1467018>

Technical data

Dimensions

Width	65 mm
Height	141 mm
Depth	107 mm

Notes

Notes on operation	Mode A PoE
Note on application	
Note on application	Only for industrial use

Material specifications

Housing material	Polycarbonate fiber reinforced
	Aluminum / steel sheet DC01

Mounting

Mounting type	DIN rail mounting
---------------	-------------------

Interfaces

Ethernet

Connection method	RJ45
Note on the connection method	Auto negotiation and autocrossing
Transmission speed	10/100/1000 Mbps (full duplex)
Transmission physics	Depending on the SFP module
Transmission length	up to 40 km (Depending on the fiber/SFP module used)
Signal LEDs	Data receive, link status, PoE
No. of channels	2 (SFP ports)
Input buffer	1.5 Mbits
Output buffer	1.5 Mbits

Ethernet (PoE)

Connection method	RJ45
Transmission speed	10/100/1000 Mbps
Transmission physics	Ethernet RJ45
Transmission length	100 m (Between transmitter / receiver)
Signal LEDs	LNK/ACT, POE
No. of channels	8 (RJ45 PoE ports)

Product properties

Product type	Switch
Product family	Unmanaged PoE Switch 1000
Type	Stand-alone

FL SWITCH 1100T-8POE-2SFP - Industrial Ethernet Switch



1467018

<https://www.phoenixcontact.com/us/products/1467018>

MTTF	30.9 Years (MIL-HDBK-217F standard, temperature 25°C, operating cycle 100%)
	460.9 Years (SN 29500 standard, temperature 25°C, operating cycle 21%)
	451.8 Years (Telcordia standard, 25°C temperature, 21% operating cycle (5 days a week, 8 hours a day))
Special properties	Extended temperature range
Basic functions	PSE, complies with IEEE 802.3af/at
	Autonegotiation
	Store and Forward switching mode

Switch functions

Basic functions	PSE, complies with IEEE 802.3af/at
	Autonegotiation
	Store and Forward switching mode
MAC address table	4k
Status and diagnostic indicators	LEDs: U _S , link and activity per port
Additional functions	100 BASE-TX (IEEE 802.3u)
	Quality of Service (QoS) prioritization (IEEE 802.1p)
	Energy-efficient Ethernet (IEEE 802.3az)
	10Base-T (IEEE 802.3)
	Gigabit Ethernet 1000BASE-T (IEEE 802.3ab)

Security functions

Basic functions	PSE, complies with IEEE 802.3af/at
	Autonegotiation
	Store and Forward switching mode

Electrical properties

Transmission medium	Copper
---------------------	--------

Supply

Supply voltage (DC)	24 V DC
Supply voltage range	20 V DC ... 57 V DC
Power supply connection	Via COMBICON, max. conductor cross-section 2.5 mm ²
Residual ripple	3.6 V _{PP} (within the permitted voltage range)
Max. current consumption	7.1 A (at 20 V DC)
Typical current consumption	157 mA (at 24 V DC)

Connection data

Connection technology

Connection name	Power supply
pluggable	yes

Power supply

Connection method	Push-in spring connection
-------------------	---------------------------

FL SWITCH 1100T-8POE-2SFP - Industrial Ethernet Switch



1467018

<https://www.phoenixcontact.com/us/products/1467018>

Conductor cross-section, rigid	0.2 mm² ... 2.5 mm²
Conductor cross-section, flexible	0.2 mm² ... 2.5 mm²
Conductor cross-section AWG	24 ... 12
Conductor cross-section, flexible, with ferrule, with plastic sleeve	0.25 mm² ... 2.5 mm²
Conductor cross-section flexible, with ferrule without plastic sleeve	0.25 mm² ... 2.5 mm²
Stripping length	10 mm

Environmental and real-life conditions

Ambient conditions

Degree of protection	IP30
Ambient temperature (operation)	-40 °C ... 70 °C
Ambient temperature (storage/transport)	-40 °C ... 85 °C
Altitude	2000 m (maximum)
Permissible humidity (operation)	5 % ... 95 % (non-condensing)
Permissible humidity (storage/transport)	5 % ... 95 % (non-condensing)
Shock (operation)	30g (EN 60068-2-27)
Vibration (operation)	in acc. with IEC 60068-2-6: 5g, 150 Hz
Air pressure (operation)	79 kPa ... 108 kPa up to 2000 m above mean sea level (Without derating)
Air pressure (storage/transport)	79 kPa ... 108 kPa up to 2000 m above mean sea level (Without derating)

Approvals

Conformity/Approvals

Conformance	CE-compliant
-------------	--------------

EMC data

Electromagnetic compatibility	Conformance with EMC Directive 2004/108/EC
Conformance with EMC directives	IEC 61000-6-2 IEC 61000-4-2 (ESD) Criterion B
	IEC 61000-4-3 (immunity to radiated interference) Criterion A
	IEC 61000-4-4 (burst) Criterion A
	IEC 61000-4-5 (surge) Criterion B
	IEC 61000-4-6 (immunity to conducted interference) Criterion A
	IEC 61000-4-8 (immunity to magnetic fields) Criterion A
Noise immunity	EN 55032 (emitted interference) Criterion A
	EN 61000-6-2:2019

Noise emission

Standards/regulations	EN_61000-6-4:2019
-----------------------	-------------------

System properties

Functionality

PSE, complies with IEEE 802.3af/at

1467018
<https://www.phoenixcontact.com/us/products/1467018>

Basic functions	Autonegotiation
	Store and Forward switching mode
Signaling	
Status display	LEDs: U _S , link and activity per port

FL SWITCH 1100T-8POE-2SFP - Industrial Ethernet Switch



1467018

<https://www.phoenixcontact.com/us/products/1467018>

Approvals

🔗 To download certificates, visit the product detail page: <https://www.phoenixcontact.com/us/products/1467018>



cULus Listed

Approval ID: E238705

FL SWITCH 1100T-8POE-2SFP - Industrial Ethernet Switch



1467018

<https://www.phoenixcontact.com/us/products/1467018>

Classifications

ECLASS

ECLASS-13.0	19170402
ECLASS-15.0	19170402

ETIM

ETIM 9.0	EC000734
----------	----------

UNSPSC

UNSPSC 21.0	43222600
-------------	----------

FL SWITCH 1100T-8POE-2SFP - Industrial Ethernet Switch



1467018

<https://www.phoenixcontact.com/us/products/1467018>

Accessories

QUINT4-PS/1AC/48DC/5 - Power supply

2904610

<https://www.phoenixcontact.com/us/products/2904610>



Primary-switched QUINT POWER power supply for DIN rail mounting with free choice of output characteristic curve and SFB (Selective Fuse Breaking) technology, input: 1-phase, output: 48 V DC / 5 A

QUINT4-PS/1AC/48DC/10 - Power supply

2904611

<https://www.phoenixcontact.com/us/products/2904611>



Primary-switched QUINT POWER power supply for DIN rail mounting with free choice of output characteristic curve and SFB (Selective Fuse Breaking) technology, input: 1-phase, output: 48 V DC / 10 A

FL SWITCH 1100T-8POE-2SFP - Industrial Ethernet Switch



1467018

<https://www.phoenixcontact.com/us/products/1467018>

TRIO-PS-2G/1AC/48DC/5 - Power supply

2903159

<https://www.phoenixcontact.com/us/products/2903159>



Primary-switched TRIO power supply for DIN rail mounting, input: 1-phase, output: 48 V DC / 5 A, dynamic boost, tool-free fast connection technology for solid and stranded conductors with ferrule

TRIO-PS-2G/1AC/48DC/10 - Power supply

2903160

<https://www.phoenixcontact.com/us/products/2903160>



Primary-switched TRIO POWER power supply with push-in connection for DIN rail mounting, input: single phase, output: 48 V DC/10 A

FL SWITCH 1100T-8POE-2SFP - Industrial Ethernet Switch



1467018

<https://www.phoenixcontact.com/us/products/1467018>

UNO-PS/1AC/24DC/150W - Power supply

2904376

<https://www.phoenixcontact.com/us/products/2904376>



Primary-switched UNO power supply for DIN rail mounting, input: 1-phase, output: 24 V DC/150 W

UNO-PS/1AC/24DC/240W - Power supply

2904372

<https://www.phoenixcontact.com/us/products/2904372>



Please use the following item in new systems: 1096432.
Primary-switched UNO power supply for DIN rail mounting, input: 1-phase, output: 24 V DC / 240 W

FL SWITCH 1100T-8POE-2SFP - Industrial Ethernet Switch



1467018

<https://www.phoenixcontact.com/us/products/1467018>

UNO2-PS/1AC/48DC/240W - Power supply

1110155

<https://www.phoenixcontact.com/us/products/1110155>



Primary-switched power supply unit, UNO POWER, Screw connection, DIN rail mounting, input: 1-phase, output: 48 V DC / 5 A, adjustable from 42 V DC ... 56 V DC

MVSTBW 2,5/ 3-ST-5,08 GY - PCB connector

1783685

<https://www.phoenixcontact.com/us/products/1783685>



PCB connector, nominal cross section: 2.5 mm², color: gray, nominal current: 12 A, rated voltage (III/2): 320 V, contact surface: Sn, contact connection type: Socket, number of potentials: 3, number of rows: 1, number of positions: 3, number of connections: 3, product range: MVSTBW 2,5/...-ST, pitch: 5.08 mm, connection method: Screw connection with tension sleeve, screw head form: L Slotted, conductor/PCB connection direction: -90 °, locking clip: - Locking clip, plug-in system: COMBICON MSTB 2,5, locking: without, mounting method: without, type of packaging: packed in cardboard

FL SWITCH 1100T-8POE-2SFP - Industrial Ethernet Switch



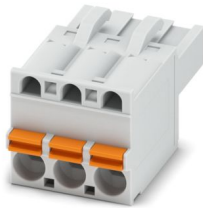
1467018

<https://www.phoenixcontact.com/us/products/1467018>

FKCT 2,5/ 3-ST KMGY - PCB connector

1998263

<https://www.phoenixcontact.com/us/products/1998263>



PCB connector, nominal cross section: 2.5 mm², color: light gray, nominal current: 12 A, rated voltage (III/2): 320 V, contact surface: Sn, contact connection type: Socket, number of potentials: 3, number of rows: 1, number of positions: 3, number of connections: 3, product range: FKCT 2,5/..-ST, pitch: 5 mm, connection method: Push-in spring connection, conductor/PCB connection direction: 0 °, locking clip: - Locking clip, plug-in system: COMBICON MSTB 2,5, locking: without, mounting method: without, type of packaging: packed in cardboard

DT-LAN-CAT.6+ - Surge protection device

2881007

<https://www.phoenixcontact.com/us/products/2881007>



Surge protection in accordance with Class E_A (CAT6_A), for Gigabit Ethernet (up to 10 Gbps), token ring, FDDI/CDDI, ISDN, DS1. Suitable for Power over Ethernet (PoE++/4PPoE) "Mode A" and "Mode B". RJ45 intermediate plug with separate grounding cable and ground connection snap-on foot for NS 35 DIN rails. Products with similar requirements: DT-LAN-CAT.6A (2908726) und D-LAN-CAT.5-HC (2800763).

FL SWITCH 1100T-8POE-2SFP - Industrial Ethernet Switch



1467018

<https://www.phoenixcontact.com/us/products/1467018>

FL CAT5 PATCH 0,5 - Patch cable

2832263

<https://www.phoenixcontact.com/us/products/2832263>

Patch cable, CAT5, assembled, 0.5 m



FL CAT5 PATCH 1,0 - Patch cable

2832276

<https://www.phoenixcontact.com/us/products/2832276>

Patch cable, CAT5, assembled, 1 m



FL SWITCH 1100T-8POE-2SFP - Industrial Ethernet Switch



1467018

<https://www.phoenixcontact.com/us/products/1467018>

FL CAT5 PATCH 2,0 - Patch cable

2832289

<https://www.phoenixcontact.com/us/products/2832289>

Patch cable, CAT5, assembled, 2 m

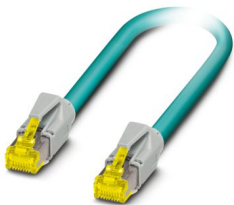


NBC-R4AC-R4AC-IE8A/.../... - Patch cable

1411854

<https://www.phoenixcontact.com/us/products/1411854>

Patch cable, degree of protection: IP20, number of positions: 8, 10 Gbps, CAT6_A, cable outlet: straight, Ethernet



FL SWITCH 1100T-8POE-2SFP - Industrial Ethernet Switch



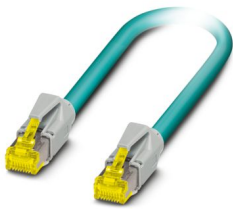
1467018

<https://www.phoenixcontact.com/us/products/1467018>

NBC-R4AC/10G-R4AC/10G-94F/2,0 - Patch cable

1408360

<https://www.phoenixcontact.com/us/products/1408360>

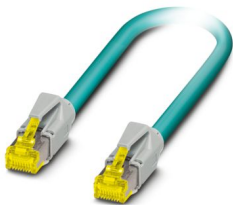


Patch cable, CAT6_A, 4-pair, shielded, connection not crossed (line), assembled at both ends with RJ45/IP20 connectors, outer sheath material: PUR, length: 2.0 m

NBC-R4AC/10G-R4AC/10G-94F/3,0 - Patch cable

1408365

<https://www.phoenixcontact.com/us/products/1408365>



Patch cable, CAT6_A, 4-pair, shielded, connection not crossed (line), assembled at both ends with RJ45/IP20 connectors, outer sheath material: PUR, length: 3.0 m

FL SWITCH 1100T-8POE-2SFP - Industrial Ethernet Switch



1467018

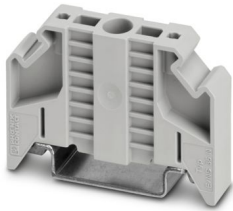
<https://www.phoenixcontact.com/us/products/1467018>

E/NS 35 N - End bracket

0800886

<https://www.phoenixcontact.com/us/products/0800886>

End clamp, width: 9.5 mm, color: gray

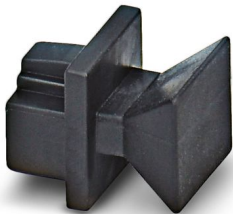


FL RJ45 PROTECT CAP - Dust protection

2832991

<https://www.phoenixcontact.com/us/products/2832991>

Dust protection caps for RJ45 socket



Phoenix Contact 2025 © - all rights reserved
<https://www.phoenixcontact.com>

Phoenix Contact USA
586 Fulling Mill Road
Middletown, PA 17057, United States
(+717) 944-1300
info@phoenixcon.com