

XT 2,5-QUATTRO-TG - Disconnect terminal block

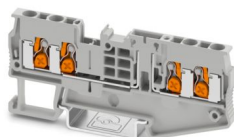


1462727

<https://www.phoenixcontact.com/us/products/1462727>

Please be informed that the data shown in this PDF document is generated from our online catalog. Please find the complete data in the user documentation. Our general terms of use for downloads are valid.

Disconnect terminal block, nom. voltage: 500 V, nominal current: 20 A, connection method: Push-X-connection, Rated cross section: 2.5 mm², cross section: 0.5 mm² - 4 mm², mounting: NS 35/7,5, NS 35/15, color: gray



Your advantages

- The compact design and front connection enable wiring in a confined space

- In addition to the testing option in the double function shaft, all terminal blocks provide an additional test pick-off

Commercial data

Item number	1462727
Packing unit	50 pc
Minimum order quantity	50 pc
Sales key	BE25
Product key	BE2532
GTIN	4063151853945
Weight per piece (including packing)	12.089 g
Weight per piece (excluding packing)	12.089 g
Customs tariff number	85369010
Country of origin	CN

XT 2,5-QUATTRO-TG - Disconnect terminal block



1462727

<https://www.phoenixcontact.com/us/products/1462727>

Technical data

Notes

General

Note	The max. load current must not be exceeded by the total current of all connected conductors.
	Current and voltage are determined by the plug used

Product properties

Product type	Disconnect terminal block
Number of positions	1
Number of connections	4
Number of rows	1
Potentials	1

Insulation characteristics

Overvoltage category	III
Degree of pollution	3

Electrical properties

Rated surge voltage	6 kV
Maximum power dissipation for nominal condition	0.77 W

Connection data

Number of connections per level	4
Nominal cross section	2.5 mm ²
Connection method	Push-X-connection
Stripping length	10 mm ... 12 mm
Internal cylindrical gage	A3
Connection in acc. with standard	IEC 60947-7-1
Conductor cross-section rigid	0.5 mm ² ... 4 mm ²
Cross section AWG	20 ... 12 (converted acc. to IEC)
Conductor cross-section flexible	0.75 mm ² ... 4 mm ²
Conductor cross-section, flexible [AWG]	20 ... 12 (converted acc. to IEC)
Conductor cross-section flexible ultrasound-compressed	0.34 mm ² ... 4 mm ²
Conductor cross-section, flexible [AWG] ultrasound-compressed	22 ... 12 (converted acc. to IEC)
Conductor cross-section flexible (ferrule without plastic sleeve)	0.5 mm ² ... 2.5 mm ²
Flexible conductor cross-section (ferrule with plastic sleeve)	0.5 mm ² ... 2.5 mm ²
Nominal current	20 A
Maximum load current	20 A (with 4 mm ² conductor cross-section, rigid)
Nominal voltage	500 V
Nominal cross section	2.5 mm ²

Dimensions

XT 2,5-QUATTRO-TG - Disconnect terminal block



1462727

<https://www.phoenixcontact.com/us/products/1462727>

Width	5.2 mm
End cover width	2.2 mm
Height	84 mm
Depth	35.3 mm
Depth on NS 35/7,5	36.8 mm
Depth on NS 35/15	44.3 mm

Material specifications

Color	gray (RAL 7042)
Flammability rating according to UL 94	V0
Insulating material group	I
Insulating material	PA
Static insulating material application in cold	-60 °C
Relative insulation material temperature index (Elec., UL 746 B)	130 °C
Fire protection for rail vehicles (DIN EN 45545-2) R22	HL 1 - HL 3
Fire protection for rail vehicles (DIN EN 45545-2) R23	HL 1 - HL 3
Fire protection for rail vehicles (DIN EN 45545-2) R24	HL 1 - HL 3
Fire protection for rail vehicles (DIN EN 45545-2) R26	HL 1 - HL 3
Surface flammability NFPA 130 (ASTM E 162)	passed
Specific optical density of smoke NFPA 130 (ASTM E 662)	passed
Smoke gas toxicity NFPA 130 (SMP 800C)	passed

Electrical tests

Surge voltage test

Test voltage setpoint	7.3 kV
Result	Test passed

Temperature-rise test

Requirement temperature-rise test	Increase in temperature ≤ 45 K
Result	Test passed
Result	Test passed

Power-frequency withstand voltage

Test voltage setpoint	1.89 kV
Result	Test passed

Mechanical properties

Mechanical data

Open side panel	Yes
-----------------	-----

Mechanical tests

Mechanical strength

Result	Test passed
--------	-------------

XT 2,5-QUATTRO-TG - Disconnect terminal block



1462727

<https://www.phoenixcontact.com/us/products/1462727>

Attachment on the carrier

DIN rail/fixing support	NS 35
Result	Test passed

Test for conductor damage and slackening

Rotation speed	9 rpm
Revolutions	135
Conductor cross-section/weight	0.5 mm ² / 0.3 kg
	2.5 mm ² / 0.7 kg
	4 mm ² / 0.9 kg
Result	Test passed

Environmental and real-life conditions

Aging

Temperature cycles	192
Result	Test passed

Needle-flame test

Time of exposure	30 s
Result	Test passed

Oscillation/broadband noise

Specification	DIN EN 50155 (VDE 0115-200):2022-06
Spectrum	Long life test category 1, class B, body mounted
Frequency	$f_1 = 5 \text{ Hz}$ to $f_2 = 150 \text{ Hz}$
ASD level	0.964 (m/s ²) ² /Hz
Acceleration	0.58g
Test duration per axis	5 h
Test directions	X-, Y- and Z-axis
Result	Test passed

Shocks

Specification	DIN EN 50155 (VDE 0115-200):2022-06
Pulse shape	Half-sine
Acceleration	5g
Shock duration	30 ms
Number of shocks per direction	3
Test directions	X-, Y- and Z-axis (pos. and neg.)
Result	Test passed

Ambient conditions

Ambient temperature (operation)	-60 °C ... 110 °C (Operating temperature range incl. self-heating; for max. short-term operating temperature, see RTI Elec.)
Ambient temperature (storage/transport)	-25 °C ... 60 °C (for a short time, not exceeding 24 h, -60 °C to +70 °C)
Ambient temperature (assembly)	-5 °C ... 70 °C

XT 2,5-QUATTRO-TG - Disconnect terminal block



1462727

<https://www.phoenixcontact.com/us/products/1462727>

Ambient temperature (actuation)	-5 °C ... 70 °C
Permissible humidity (operation)	20 % ... 90 %
Permissible humidity (storage/transport)	30 % ... 70 %

Standards and regulations

Connection in acc. with standard	IEC 60947-7-1
----------------------------------	---------------

Mounting

Mounting type	NS 35/7,5
	NS 35/15

XT 2,5-QUATTRO-TG - Disconnect terminal block



1462727

<https://www.phoenixcontact.com/us/products/1462727>

Drawings

Circuit diagram



XT 2,5-QUATTRO-TG - Disconnect terminal block





1462727

<https://www.phoenixcontact.com/us/products/1462727>

Approvals

To download certificates, visit the product detail page: <https://www.phoenixcontact.com/us/products/1462727>

 CSA Approval ID: 2030668				
	Nominal voltage U_N	Nominal current I_N	Cross section AWG	Cross section mm^2
B				
	300 V	20 A	20 - 12	-
C				
	300 V	20 A	20 - 12	-
D				
	600 V	5 A	20 - 12	-

 cULus Recognized Approval ID: E60425				
	Nominal voltage U_N	Nominal current I_N	Cross section AWG	Cross section mm^2
B				
	300 V	20 A	20 - 12	-
C				
	300 V	20 A	20 - 12	-
F				
	500 V	20 A	20 - 12	-
D				
	600 V	5 A	20 - 12	-

XT 2,5-QUATTRO-TG - Disconnect terminal block



1462727

<https://www.phoenixcontact.com/us/products/1462727>

Classifications

ECLASS

ECLASS-13.0	27250108
ECLASS-15.0	27250108

ETIM

ETIM 9.0	EC000902
----------	----------

UNSPSC

UNSPSC 21.0	39121400
-------------	----------

XT 2,5-QUATTRO-TG - Disconnect terminal block



1462727

<https://www.phoenixcontact.com/us/products/1462727>

Environmental product compliance

EU RoHS

Fulfills EU RoHS substance requirements	Yes, No exemptions
---	--------------------

China RoHS

Environment friendly use period (EFUP)	EFUP-E
	No hazardous substances above the limits

EU REACH SVHC

REACH candidate substance (CAS No.)	No substance above 0.1 wt%
-------------------------------------	----------------------------

XT 2,5-QUATTRO-TG - Disconnect terminal block



1462727

<https://www.phoenixcontact.com/us/products/1462727>

Accessories

i Note: Applying some accessories below might limit this product.

FBS 2-5 - Plug-in bridge

3030161

<https://www.phoenixcontact.com/us/products/3030161>



Plug-in bridge, pitch: 5.2 mm, number of positions: 2, length: 23 mm, color: red

i Max. current carrying capacity: 20 A

FBS 3-5 - Plug-in bridge

3030174

<https://www.phoenixcontact.com/us/products/3030174>



Plug-in bridge, pitch: 5.2 mm, number of positions: 3, length: 23 mm, color: red

i Max. current carrying capacity: 20 A

XT 2,5-QUATTRO-TG - Disconnect terminal block



1462727

<https://www.phoenixcontact.com/us/products/1462727>


FBS 4-5 - Plug-in bridge

3030187

<https://www.phoenixcontact.com/us/products/3030187>



Plug-in bridge, pitch: 5.2 mm, number of positions: 4, length: 23 mm, color: red

 Max. current carrying capacity: 20 A

FBS 5-5 - Plug-in bridge

3030190

<https://www.phoenixcontact.com/us/products/3030190>



Plug-in bridge, pitch: 5.2 mm, number of positions: 5, length: 23 mm, color: red

 Max. current carrying capacity: 20 A

XT 2,5-QUATTRO-TG - Disconnect terminal block



1462727

<https://www.phoenixcontact.com/us/products/1462727>


FBS 10-5 - Plug-in bridge

3030213

<https://www.phoenixcontact.com/us/products/3030213>



Plug-in bridge, pitch: 5.2 mm, number of positions: 10, length: 23 mm, color: red

 Max. current carrying capacity: 20 A


FBS 20-5 - Plug-in bridge

3030226

<https://www.phoenixcontact.com/us/products/3030226>



Plug-in bridge, pitch: 5.2 mm, number of positions: 20, color: red

 Max. current carrying capacity: 20 A

XT 2,5-QUATTRO-TG - Disconnect terminal block



1462727

<https://www.phoenixcontact.com/us/products/1462727>


FBS 50-5 - Plug-in bridge

3038930

<https://www.phoenixcontact.com/us/products/3038930>



Plug-in bridge, pitch: 5.2 mm, number of positions: 50, color: red

 Max. current carrying capacity: 20 A

FBSR 2-5 - Plug-in bridge

3033702

<https://www.phoenixcontact.com/us/products/3033702>



Plug-in bridge, pitch: 5.2 mm, number of positions: 2, color: red

 Max. current carrying capacity: 17.5 A

XT 2,5-QUATTRO-TG - Disconnect terminal block



1462727

<https://www.phoenixcontact.com/us/products/1462727>

FBSR 3-5 - Plug-in bridge

3001591

<https://www.phoenixcontact.com/us/products/3001591>



Plug-in bridge, pitch: 5.2 mm, number of positions: 3, color: red

 Max. current carrying capacity: 17.5 A


FBSR 4-5 - Plug-in bridge

3001592

<https://www.phoenixcontact.com/us/products/3001592>



Plug-in bridge, pitch: 5.2 mm, number of positions: 4, color: red

 Max. current carrying capacity: 17.5 A

XT 2,5-QUATTRO-TG - Disconnect terminal block



1462727

<https://www.phoenixcontact.com/us/products/1462727>


FBSR 5-5 - Plug-in bridge

3001593

<https://www.phoenixcontact.com/us/products/3001593>



Plug-in bridge, pitch: 5.2 mm, number of positions: 5, color: red

 Max. current carrying capacity: 17.5 A


FBSR 10-5 - Plug-in bridge

3033710

<https://www.phoenixcontact.com/us/products/3033710>



Plug-in bridge, pitch: 5.2 mm, number of positions: 10, color: red

 Max. current carrying capacity: 17.5 A

XT 2,5-QUATTRO-TG - Disconnect terminal block



1462727

<https://www.phoenixcontact.com/us/products/1462727>


FBS 2-5 BU - Plug-in bridge

3036877

<https://www.phoenixcontact.com/us/products/3036877>



Plug-in bridge, pitch: 5.2 mm, number of positions: 2, color: blue

 Max. current carrying capacity: 20 A

FBS 3-5 BU - Plug-in bridge

3036880

<https://www.phoenixcontact.com/us/products/3036880>



Plug-in bridge, pitch: 5.2 mm, number of positions: 3, color: blue

 Max. current carrying capacity: 20 A

XT 2,5-QUATTRO-TG - Disconnect terminal block



1462727

<https://www.phoenixcontact.com/us/products/1462727>


FBS 4-5 BU - Plug-in bridge

3036893

<https://www.phoenixcontact.com/us/products/3036893>



Plug-in bridge, pitch: 5.2 mm, number of positions: 4, color: blue

 Max. current carrying capacity: 20 A

FBS 5-5 BU - Plug-in bridge

3036903

<https://www.phoenixcontact.com/us/products/3036903>



Plug-in bridge, pitch: 5.2 mm, number of positions: 5, color: blue

 Max. current carrying capacity: 20 A

XT 2,5-QUATTRO-TG - Disconnect terminal block



1462727

<https://www.phoenixcontact.com/us/products/1462727>


FBS 10-5 BU - Plug-in bridge

3036916

<https://www.phoenixcontact.com/us/products/3036916>



Plug-in bridge, pitch: 5.2 mm, number of positions: 10, color: blue

 Max. current carrying capacity: 20 A

FBS 20-5 BU - Plug-in bridge

3036929

<https://www.phoenixcontact.com/us/products/3036929>



Plug-in bridge, pitch: 5.2 mm, number of positions: 20, color: blue

 Max. current carrying capacity: 20 A

XT 2,5-QUATTRO-TG - Disconnect terminal block



1462727

<https://www.phoenixcontact.com/us/products/1462727>


FBS 50-5 BU - Plug-in bridge

3032114

<https://www.phoenixcontact.com/us/products/3032114>



Plug-in bridge, pitch: 5.2 mm, number of positions: 50, color: blue

 Max. current carrying capacity: 20 A

RB ST (2,5/4)-1,5/S - Reducing bridge

3214356

<https://www.phoenixcontact.com/us/products/3214356>



Reducing bridge, pitch: 6.7 mm, number of positions: 2, length: 23 mm, color: red

 Max. current carrying capacity: 24 A

XT 2,5-QUATTRO-TG - Disconnect terminal block



1462727

<https://www.phoenixcontact.com/us/products/1462727>


RB ST 6-(2,5/4) - Reducing bridge

3030860

<https://www.phoenixcontact.com/us/products/3030860>



Reducing bridge, pitch: 9 mm, number of positions: 2, length: 30 mm, color: red

 Max. current carrying capacity: 35 A

RB ST 10-(2,5/4) - Reducing bridge

3030873

<https://www.phoenixcontact.com/us/products/3030873>



Reducing bridge, pitch: 10 mm, number of positions: 2, length: 36 mm, color: red

 Max. current carrying capacity: 35 A

XT 2,5-QUATTRO-TG - Disconnect terminal block



1462727

<https://www.phoenixcontact.com/us/products/1462727>


RB ST 16-(2,5/4) - Reducing bridge

3030886

<https://www.phoenixcontact.com/us/products/3030886>



Reducing bridge, pitch: 11 mm, number of positions: 2, length: 37 mm, color: red

 Max. current carrying capacity: 35 A

RB ST 35-(2,5/4) - Reducing bridge

3030899

<https://www.phoenixcontact.com/us/products/3030899>



Reducing bridge, pitch: 11 mm, number of positions: 2, color: red

 Max. current carrying capacity: 35 A

XT 2,5-QUATTRO-TG - Disconnect terminal block



1462727

<https://www.phoenixcontact.com/us/products/1462727>

RB ST (2,5/4)-1,5 - Reducing bridge

3038943

<https://www.phoenixcontact.com/us/products/3038943>



Reducing bridge, pitch: 7.1 mm, number of positions: 2, length: 23 mm, color: red

 Max. current carrying capacity: 24 A

RB UT 6-ST(2,5/4) - Reducing bridge

3047264

<https://www.phoenixcontact.com/us/products/3047264>



Reducing bridge, pitch: 9.5 mm, number of positions: 2, length: 33 mm, color: red

 Max. current carrying capacity: 35 A

XT 2,5-QUATTRO-TG - Disconnect terminal block



1462727

<https://www.phoenixcontact.com/us/products/1462727>


RB UT 35-ST(2,5/4) - Reducing bridge

3047280

<https://www.phoenixcontact.com/us/products/3047280>



Reducing bridge, pitch: 10.8 mm, number of positions: 2, color: red

 Max. current carrying capacity: 40 A

RB UT 10-ST(2,5/4) - Reducing bridge

3047086

<https://www.phoenixcontact.com/us/products/3047086>



Reducing bridge, pitch: 10.2 mm, number of positions: 2, length: 33 mm, color: red

 Max. current carrying capacity: 40 A

XT 2,5-QUATTRO-TG - Disconnect terminal block



1462727

<https://www.phoenixcontact.com/us/products/1462727>

RB PTPower 35-ST(2,5/4) - Reducing bridge

3030900

<https://www.phoenixcontact.com/us/products/3030900>



Reducing bridge, for bridging of PTPower 35 to ST or PT ..N terminal blocks with nominal cross section of 2.5 mm² and 4 mm², pitch: 10.8 mm, number of positions: 2, length: 5 mm, color: red

ATP-ST QUATTRO - Partition plate

3030815

<https://www.phoenixcontact.com/us/products/3030815>



Partition plate, depth: 39 mm, width: 2.2 mm, height: 90.9 mm, color: gray

XT 2,5-QUATTRO-TG - Disconnect terminal block



1462727

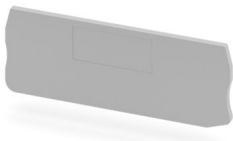
<https://www.phoenixcontact.com/us/products/1462727>

D-ST 2,5-QUATTRO-MT - End cover

3038590

<https://www.phoenixcontact.com/us/products/3038590>

End cover, depth: 29.1 mm, width: 2.2 mm, height: 84 mm, color: gray



ST-BW 0 - Actuation tool

1200135

<https://www.phoenixcontact.com/us/products/1200135>

Actuation tool, for all 1.5 mm² spring cages from PT 1,5/S and FT 1,5/S



XT 2,5-QUATTRO-TG - Disconnect terminal block



1462727

<https://www.phoenixcontact.com/us/products/1462727>

SZS 0,4X2,5 VDE - Screwdriver

1205037

<https://www.phoenixcontact.com/us/products/1205037>



Screwdriver, slot-headed, VDE insulated, size: 0.4 x 2.5 x 80 mm, 2-component grip, with non-slip grip

SF-SL 0,6X3,5-100 S-VDE - Screwdriver

1212587

<https://www.phoenixcontact.com/us/products/1212587>



Actuation tool, for ST terminal blocks, VDE insulated, with slimmer insulation integrated in the blade, also suitable for use as a bladed screwdriver, size: 0.6 x 3.5 x 100 mm, 2-component grip, with non-slip grip

XT 2,5-QUATTRO-TG - Disconnect terminal block



1462727

<https://www.phoenixcontact.com/us/products/1462727>

SZK PZ0 VDE - Screwdriver

1206447

<https://www.phoenixcontact.com/us/products/1206447>



Screwdriver, PZ crosshead, VDE insulated, size: PZ 0 x 80 mm, 2-component grip, with non-slip grip

LPS-5/E - Service connector

3270520

<https://www.phoenixcontact.com/us/products/3270520>



Service connector, nom. voltage: 800 V, nominal current: 24 A, number of positions: 1, connection method: Push-in connection, Rated cross section: 2.5 mm², cross section: 0.14 mm²- 4 mm², color: red

XT 2,5-QUATTRO-TG - Disconnect terminal block



1462727

<https://www.phoenixcontact.com/us/products/1462727>

LPS-5 - Service connector

3270521

<https://www.phoenixcontact.com/us/products/3270521>



Service connector, nom. voltage: 800 V, nominal current: 24 A, number of positions: 1, connection method: Push-in connection, Rated cross section: 2.5 mm², cross section: 0.14 mm²- 4 mm², color: red

WS PT 2,5 - Warning label

1029026

<https://www.phoenixcontact.com/us/products/1029026>



Warning label, yellow/black, labeled: Lightning flash, mounting type: plug in, for terminal block width: 5.2 mm

XT 2,5-QUATTRO-TG - Disconnect terminal block

1462727

<https://www.phoenixcontact.com/us/products/1462727>



WS-DIO PT 2,5 - Warning label

1029037

<https://www.phoenixcontact.com/us/products/1029037>



Warning label, yellow/black, labeled: Diode, mounting type: plug in, for terminal block width: 5.2 mm

D-ST 2,5-QUATTRO-MT OG - End cover

3039874

<https://www.phoenixcontact.com/us/products/3039874>

End cover, depth: 36.5 mm, width: 2.2 mm, height: 84 mm, color: orange



XT 2,5-QUATTRO-TG - Disconnect terminal block



1462727

<https://www.phoenixcontact.com/us/products/1462727>

D-ST 2,5-QUATTRO-MT RD - End cover

3032062

<https://www.phoenixcontact.com/us/products/3032062>

End cover, depth: 29.1 mm, width: 2.2 mm, height: 84 mm, color: red



NS 35/ 7,5 PERF 2000MM - DIN rail perforated

0801733

<https://www.phoenixcontact.com/us/products/0801733>



DIN rail perforated, Pack of 25 (50 m), acc. to EN 60715, material: Steel, galvanized, passivated with a thick layer, Standard profile, color: silver

XT 2,5-QUATTRO-TG - Disconnect terminal block



1462727

<https://www.phoenixcontact.com/us/products/1462727>

NS 35/ 7,5 UNPERF 2000MM - DIN rail, unperforated

0801681

<https://www.phoenixcontact.com/us/products/0801681>



DIN rail, unperforated, Pack of 25 (50 m), acc. to EN 60715, material: Steel, galvanized, passivated with a thick layer, Standard profile, color: silver-colored

NS 35/ 7,5 WH PERF 2000MM - DIN rail perforated

1204119

<https://www.phoenixcontact.com/us/products/1204119>



DIN rail perforated, Pack of 25 (50 m), acc. to EN 60715, material: Steel, galvanized, white passivated, Standard profile, color: silver-colored

XT 2,5-QUATTRO-TG - Disconnect terminal block



1462727

<https://www.phoenixcontact.com/us/products/1462727>

NS 35/ 7,5 WH UNPERF 2000MM-VPE 10 - DIN rail, unperforated

1204122

<https://www.phoenixcontact.com/us/products/1204122>



DIN rail, unperforated, Pack of 10 (20 m), acc. to EN 60715, material: Steel, galvanized, white passivated, Standard profile, color: silver-colored

NS 35/ 7,5 AL UNPERF 2000MM - DIN rail, unperforated

0801704

<https://www.phoenixcontact.com/us/products/0801704>



DIN rail, unperforated, Pack of 25 (50 m), acc. to EN 60715, material: Aluminum, uncoated, Standard profile, color: silver-colored

XT 2,5-QUATTRO-TG - Disconnect terminal block



1462727

<https://www.phoenixcontact.com/us/products/1462727>

NS 35/ 7,5 ZN PERF 2000MM - DIN rail perforated

1206421

<https://www.phoenixcontact.com/us/products/1206421>



DIN rail perforated, Pack of 25 (50 m), acc. to EN 60715, material: Steel, zinc plating, Standard profile, color: silver-colored

NS 35/ 7,5 ZN UNPERF 2000MM - DIN rail, unperforated

1206434

<https://www.phoenixcontact.com/us/products/1206434>



DIN rail, unperforated, Pack of 25 (50 m), acc. to EN 60715, material: Steel, zinc plating, Standard profile, color: silver-colored

XT 2,5-QUATTRO-TG - Disconnect terminal block

1462727

<https://www.phoenixcontact.com/us/products/1462727>



NS 35/ 7,5 CU UNPERF 2000MM-VPE 10 - DIN rail, unperforated

0801762

<https://www.phoenixcontact.com/us/products/0801762>



DIN rail, unperforated, Pack of 10 (20 m), acc. to EN 60715, material: Copper, uncoated, Standard profile, color: copper-colored

NS 35/ 7,5 CAP - End cap

1206560

<https://www.phoenixcontact.com/us/products/1206560>

DIN rail end piece, for DIN rail NS 35/7.5



XT 2,5-QUATTRO-TG - Disconnect terminal block



1462727

<https://www.phoenixcontact.com/us/products/1462727>

NS 35/15 PERF 2000MM - DIN rail perforated

1201730

<https://www.phoenixcontact.com/us/products/1201730>



DIN rail perforated, Pack of 25 (50 m), similar to EN 60715, material: Steel, galvanized, passivated with a thick layer, Standard profile, color: silver-colored

NS 35/15 UNPERF 2000MM - DIN rail, unperforated

1201714

<https://www.phoenixcontact.com/us/products/1201714>



DIN rail, unperforated, Pack of 25 (50 m), similar to EN 60715, material: Steel, galvanized, passivated with a thick layer, Standard profile, color: silver-colored

XT 2,5-QUATTRO-TG - Disconnect terminal block



1462727

<https://www.phoenixcontact.com/us/products/1462727>

NS 35/15 WH PERF 2000MM - DIN rail perforated

0806602

<https://www.phoenixcontact.com/us/products/0806602>



DIN rail perforated, Pack of 25 (50 m), similar to EN 60715, material: Steel, galvanized, white passivated, Standard profile, color: white

NS 35/15 WH UNPERF 2000MM-VPE 10 - DIN rail, unperforated

1204135

<https://www.phoenixcontact.com/us/products/1204135>



DIN rail, unperforated, Pack of 10 (20 m), similar to EN 60715, material: Steel, galvanized, white passivated, Standard profile, color: silver-colored

XT 2,5-QUATTRO-TG - Disconnect terminal block



1462727

<https://www.phoenixcontact.com/us/products/1462727>

NS 35/15 AL UNPERF 2000MM - DIN rail, unperforated

1201756

<https://www.phoenixcontact.com/us/products/1201756>



DIN rail, unperforated, similar to EN 60715, material: Aluminum, uncoated, Standard profile, color: silver-colored

NS 35/15 ZN PERF 2000MM - DIN rail perforated

1206599

<https://www.phoenixcontact.com/us/products/1206599>



DIN rail perforated, Pack of 25 (50 m), similar to EN 60715, material: Steel, zinc plating, Standard profile, color: silver-colored

XT 2,5-QUATTRO-TG - Disconnect terminal block



1462727

<https://www.phoenixcontact.com/us/products/1462727>

NS 35/15 ZN UNPERF 2000MM - DIN rail, unperforated

1206586

<https://www.phoenixcontact.com/us/products/1206586>



DIN rail, unperforated, Pack of 25 (50 m), similar to EN 60715, material: Steel, zinc plating, Standard profile, color: silver-colored

NS 35/15 CU UNPERF 2000MM-VPE 10 - DIN rail, unperforated

1201895

<https://www.phoenixcontact.com/us/products/1201895>



DIN rail, unperforated, Pack of 10 (20 m), similar to EN 60715, material: Copper, uncoated, Standard profile, color: copper-colored

XT 2,5-QUATTRO-TG - Disconnect terminal block



1462727

<https://www.phoenixcontact.com/us/products/1462727>

NS 35/15 CAP - End cap

1206573

<https://www.phoenixcontact.com/us/products/1206573>

DIN rail end piece, for DIN rail NS 35/15



NS 35/15-2,3 UNPERF 2000MM-VPE 10 - DIN rail, unperforated

1201798

<https://www.phoenixcontact.com/us/products/1201798>



DIN rail, unperforated, Pack of 10 (20 m), acc. to EN 60715, material: Steel, galvanized, passivated with a thick layer, Standard profile 2.3 mm, color: silver-colored

XT 2,5-QUATTRO-TG - Disconnect terminal block



1462727

<https://www.phoenixcontact.com/us/products/1462727>

ZB 5 :UNBEDRUCKT - Zack marker strip

1050004

<https://www.phoenixcontact.com/us/products/1050004>



Zack marker strip, Strip, white, unmarked, can be labeled with: PLOTMARK, CMS-P1-PLOTTER, mounting type: latching, for terminal block width: 5.2 mm, Number of individual labels: 10, text field height: 10.5 mm, text field width: 5.1 mm

ZB 5 CUS - Zack marker strip

0824962

<https://www.phoenixcontact.com/us/products/0824962>



Zack marker strip, can be ordered: Strip, white, labeled according to customer specifications, mounting type: snap into tall marker groove, for terminal block width: 5.2 mm, Number of individual labels: 10, text field height: 10.5 mm, text field width: 5.15 mm

XT 2,5-QUATTRO-TG - Disconnect terminal block



1462727

<https://www.phoenixcontact.com/us/products/1462727>

ZB 5,LGS:FORTL.ZAHLEN - Zack marker strip

1050017

<https://www.phoenixcontact.com/us/products/1050017>

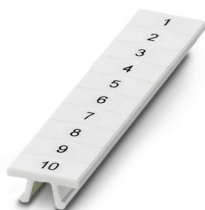


Zack marker strip, Strip, white, labeled, printed horizontally: consecutive numbers 1 ... 10, 11 ... 20, etc. up to 491 ... 500, mounting type: latching, for terminal block width: 5.2 mm, Number of individual labels: 10, text field height: 10.5 mm, text field width: 5.15 mm

ZB 5,QR:FORTL.ZAHLEN - Zack marker strip

1050020

<https://www.phoenixcontact.com/us/products/1050020>



Zack marker strip, Strip, white, Printed vertically: consecutive numbers 1 ... 10, 11 ... 20, etc. up to 491 ... 500, mounting type: latching, for terminal block width: 5.2 mm, Number of individual labels: 10, text field height: 10.5 mm, text field width: 5.15 mm

XT 2,5-QUATTRO-TG - Disconnect terminal block



1462727

<https://www.phoenixcontact.com/us/products/1462727>

ZB 5,LGS:GLEICHE ZAHLEN - Zack marker strip

1050033

<https://www.phoenixcontact.com/us/products/1050033>



Zack marker strip, Strip, white, labeled, can be labeled with: CMS-P1-PLOTTER, printed horizontally: Identical numbers 1 or 2, etc. up to 100, mounting type: latching, for terminal block width: 5.2 mm, Number of individual labels: 10, text field height: 10.5 mm, text field width: 5.15 mm

ZB 5,LGS:L1-N,PE - Zack marker strip

1050415

<https://www.phoenixcontact.com/us/products/1050415>



Zack marker strip, Strip, white, labeled, horizontal: L1, L2, L3, N, PE, L1, L2, L3, N, PE, mounting type: latching, for terminal block width: 5.2 mm, Number of individual labels: 10, text field height: 10.5 mm, text field width: 5.15 mm

XT 2,5-QUATTRO-TG - Disconnect terminal block



1462727

<https://www.phoenixcontact.com/us/products/1462727>

UC-TM 5 - Marker for terminal blocks

0818108

<https://www.phoenixcontact.com/us/products/0818108>



Marker for terminal blocks, Sheet, white, unmarked, can be labeled with: BLUEMARK E.CARD, BLUEMARK ID COLOR, BLUEMARK ID, BLUEMARK CLED, PLOTMARK, CMS-P1-PLOTTER, mounting type: latching, for terminal block width: 5.2 mm, Number of individual labels: 96, text field height: 10.5 mm, text field width: 4.6 mm

UC-TM 5 CUS - Marker for terminal blocks

0824581

<https://www.phoenixcontact.com/us/products/0824581>



Marker for terminal blocks, can be ordered: by sheet, white, labeled according to customer specifications, mounting type: snap into tall marker groove, for terminal block width: 5.2 mm, Number of individual labels: 96, text field height: 4.6 mm, text field width: 10.5 mm

XT 2,5-QUATTRO-TG - Disconnect terminal block



1462727

<https://www.phoenixcontact.com/us/products/1462727>

UCT-TM 5 - Marker for terminal blocks

0828734

<https://www.phoenixcontact.com/us/products/0828734>



Marker for terminal blocks, Sheet, white, unmarked, can be labeled with: BLUEMARK E.CARD, BLUEMARK ID COLOR, BLUEMARK ID, BLUEMARK CLED, THERMOMARK PRIME 2.0, THERMOMARK PRIME, THERMOMARK CARD 2.0, THERMOMARK CARD, TOPMARK NEO, TOPMARK LASER, mounting type: latching, for terminal block width: 5.2 mm, Number of individual labels: 72, text field height: 10.5 mm, text field width: 4.6 mm

UCT-TM 5 CUS - Marker for terminal blocks

0829595

<https://www.phoenixcontact.com/us/products/0829595>



Marker for terminal blocks, can be ordered: by sheet, white, labeled according to customer specifications, mounting type: snap into tall marker groove, for terminal block width: 5.2 mm, Number of individual labels: 72, text field height: 10.5 mm, text field width: 4.6 mm

XT 2,5-QUATTRO-TG - Disconnect terminal block



1462727

<https://www.phoenixcontact.com/us/products/1462727>

GBS 5-25X12 - Group marker label for terminal marking

0810588

<https://www.phoenixcontact.com/us/products/0810588>



Group marker label, snaps onto terminal center for screw, spring-cage and quick connection terminal blocks, labeled with a 25 x 12 mm label or manually with the B-STIFT, in the foot part with ZB 5

GBS 5-25X5 - Group marker label for terminal marking

0829126

<https://www.phoenixcontact.com/us/products/0829126>



Group marking label, can be snapped into terminal center for screw, spring-cage, push-in, and fast connection terminal blocks, can be labeled with a 24 x 4 mm label or manually using B-STIFT, in the foot part with ZB 5

XT 2,5-QUATTRO-TG - Disconnect terminal block



1462727

<https://www.phoenixcontact.com/us/products/1462727>

ZBF 5:UNBEDRUCKT - Zack Marker strip, flat

0808642

<https://www.phoenixcontact.com/us/products/0808642>



Zack Marker strip, flat, Strip, white, unmarked, can be labeled with: PLOTMARK, CMS-P1-PLOTTER, mounting type: latching, for terminal block width: 5 mm, Number of individual labels: 10, text field height: 5.15 mm, text field width: 5.15 mm

ZBF 5 CUS - Zack Marker strip, flat

0825025

<https://www.phoenixcontact.com/us/products/0825025>



Zack Marker strip, flat, can be ordered: Strip, white, labeled according to customer specifications, mounting type: snap into flat marker groove, for terminal block width: 5 mm, Number of individual labels: 10, text field height: 5.15 mm, text field width: 5.15 mm

XT 2,5-QUATTRO-TG - Disconnect terminal block



1462727

<https://www.phoenixcontact.com/us/products/1462727>

ZBF 5,LGS:FORTL.ZAHLEN - Zack Marker strip, flat

0808671

<https://www.phoenixcontact.com/us/products/0808671>



Zack Marker strip, flat, Strip, white, labeled, printed horizontally: consecutive numbers 1 ... 10, 11 ... 20, etc. up to 491 ... 500, mounting type: latching, for terminal block width: 5 mm, Number of individual labels: 10, text field height: 5.15 mm, text field width: 5.15 mm

ZBF 5,QR:FORTL.ZAHLEN - Zack Marker strip, flat

0808697

<https://www.phoenixcontact.com/us/products/0808697>



Zack Marker strip, flat, Strip, white, labeled, Printed vertically: consecutive numbers 1 ... 10, 11 ... 20, etc. up to 91 ... 100, mounting type: latching, for terminal block width: 5 mm, Number of individual labels: 10, text field height: 5.15 mm, text field width: 5.15 mm

XT 2,5-QUATTRO-TG - Disconnect terminal block



1462727

<https://www.phoenixcontact.com/us/products/1462727>

ZBF 5,LGS:GERADE ZAHLEN - Zack Marker strip, flat

0810821

<https://www.phoenixcontact.com/us/products/0810821>



Zack Marker strip, flat, Strip, white, labeled, printed horizontally: consecutive even numbers 2 ... 20, 22 ... 40, etc. up to 82 ... 100, mounting type: latching, for terminal block width: 5 mm, Number of individual labels: 10, text field height: 5.15 mm, text field width: 5.15 mm

ZBF 5,LGS:UNGERADE ZAHLEN - Zack Marker strip, flat

0810863

<https://www.phoenixcontact.com/us/products/0810863>



Zack Marker strip, flat, Strip, white, labeled, printed horizontally: Odd numbers 1 - 19, 21 - 39, etc. up to 81 - 99, mounting type: latching, for terminal block width: 5 mm, Number of individual labels: 10, text field height: 5.15 mm, text field width: 5.15 mm

XT 2,5-QUATTRO-TG - Disconnect terminal block



1462727

<https://www.phoenixcontact.com/us/products/1462727>

UC-TMF 5 - Marker for terminal blocks

0818153

<https://www.phoenixcontact.com/us/products/0818153>

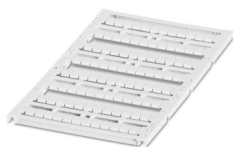


Marker for terminal blocks, Sheet, white, unmarked, can be labeled with: BLUEMARK E.CARD, BLUEMARK ID COLOR, BLUEMARK ID, BLUEMARK CLED, PLOTMARK, CMS-P1-PLOTTER, mounting type: latching, for terminal block width: 5.2 mm, Number of individual labels: 96, text field height: 5.1 mm, text field width: 4.6 mm

UC-TMF 5 CUS - Marker for terminal blocks

0824638

<https://www.phoenixcontact.com/us/products/0824638>



Marker for terminal blocks, can be ordered: by sheet, white, labeled according to customer specifications, mounting type: snap into flat marker groove, for terminal block width: 5.2 mm, Number of individual labels: 96, text field height: 5.1 mm, text field width: 4.6 mm

XT 2,5-QUATTRO-TG - Disconnect terminal block



1462727

<https://www.phoenixcontact.com/us/products/1462727>

UCT-TMF 5 - Marker for terminal blocks

0828744

<https://www.phoenixcontact.com/us/products/0828744>



Marker for terminal blocks, Sheet, white, unmarked, can be labeled with: BLUEMARK E.CARD, BLUEMARK ID COLOR, BLUEMARK ID, BLUEMARK CLED, THERMOMARK PRIME 2.0, THERMOMARK PRIME, THERMOMARK CARD 2.0, THERMOMARK CARD, TOPMARK NEO, TOPMARK LASER, mounting type: latching, for terminal block width: 5.2 mm, Number of individual labels: 72, text field height: 4.7 mm, text field width: 4.4 mm

UCT-TMF 5 CUS - Marker for terminal blocks

0829658

<https://www.phoenixcontact.com/us/products/0829658>



Marker for terminal blocks, can be ordered: by sheet, white, labeled according to customer specifications, mounting type: snap into flat marker groove, for terminal block width: 5.2 mm, Number of individual labels: 72, text field height: 4.7 mm, text field width: 4.4 mm

XT 2,5-QUATTRO-TG - Disconnect terminal block



1462727

<https://www.phoenixcontact.com/us/products/1462727>

MPS-MT - Test plug

0201744

<https://www.phoenixcontact.com/us/products/0201744>



Test plug, with solder connection up to 1 mm² conductor cross-section, number of positions: 1, color: gray

MPS-IH WH - Insulating sleeve

0201663

<https://www.phoenixcontact.com/us/products/0201663>

Insulating sleeve, color: white



XT 2,5-QUATTRO-TG - Disconnect terminal block



1462727

<https://www.phoenixcontact.com/us/products/1462727>

MPS-IH RD - Insulating sleeve

0201676

<https://www.phoenixcontact.com/us/products/0201676>

Insulating sleeve, color: red

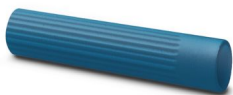


MPS-IH BU - Insulating sleeve

0201689

<https://www.phoenixcontact.com/us/products/0201689>

Insulating sleeve, color: blue



XT 2,5-QUATTRO-TG - Disconnect terminal block



1462727

<https://www.phoenixcontact.com/us/products/1462727>

MPS-IH YE - Insulating sleeve

0201692

<https://www.phoenixcontact.com/us/products/0201692>

Insulating sleeve, color: yellow



MPS-IH GN - Insulating sleeve

0201702

<https://www.phoenixcontact.com/us/products/0201702>

Insulating sleeve, color: green



XT 2,5-QUATTRO-TG - Disconnect terminal block



1462727

<https://www.phoenixcontact.com/us/products/1462727>

MPS-IH GY - Insulating sleeve

0201728

<https://www.phoenixcontact.com/us/products/0201728>

Insulating sleeve, color: gray



MPS-IH BK - Insulating sleeve

0201731

<https://www.phoenixcontact.com/us/products/0201731>

Insulating sleeve, color: black



XT 2,5-QUATTRO-TG - Disconnect terminal block



1462727

<https://www.phoenixcontact.com/us/products/1462727>

ISH 2,5/0,2 - Insulating sleeve

3002843

<https://www.phoenixcontact.com/us/products/3002843>

Insulating sleeve, color: white



ISH 2,5/0,5 - Insulating sleeve

3002856

<https://www.phoenixcontact.com/us/products/3002856>

Insulating sleeve, color: gray



XT 2,5-QUATTRO-TG - Disconnect terminal block



1462727

<https://www.phoenixcontact.com/us/products/1462727>

ISH 2,5/1,0 - Insulating sleeve

3002869

<https://www.phoenixcontact.com/us/products/3002869>



Insulating sleeve, color: black

PAI-4-FIX-5/6 BU - Test adapter

3035975

<https://www.phoenixcontact.com/us/products/3035975>



4 mm test adapter, for terminal blocks with 5.2 mm and 6.2 mm pitch

XT 2,5-QUATTRO-TG - Disconnect terminal block



1462727

<https://www.phoenixcontact.com/us/products/1462727>

PAI-4-FIX-5/6 OG - Test adapter

3035974

<https://www.phoenixcontact.com/us/products/3035974>



4 mm test adapter, for terminal blocks with 5.2 mm and 6.2 mm pitch

PAI-4-FIX-5/6 YE - Test adapter

3035977

<https://www.phoenixcontact.com/us/products/3035977>



4 mm test adapter, for terminal blocks with 5.2 mm and 6.2 mm pitch

XT 2,5-QUATTRO-TG - Disconnect terminal block



1462727

<https://www.phoenixcontact.com/us/products/1462727>

PAI-4-FIX-5/6 RD - Test adapter

3035976

<https://www.phoenixcontact.com/us/products/3035976>



4 mm test adapter, for terminal blocks with 5.2 mm and 6.2 mm pitch

PAI-4-FIX-5/6 GN - Test adapter

3035978

<https://www.phoenixcontact.com/us/products/3035978>



4 mm test adapter, for terminal blocks with 5.2 mm and 6.2 mm pitch

XT 2,5-QUATTRO-TG - Disconnect terminal block



1462727

<https://www.phoenixcontact.com/us/products/1462727>

PAI-4-FIX-5/6 BK - Test adapter

3035980

<https://www.phoenixcontact.com/us/products/3035980>



4 mm test adapter, for terminal blocks with 5.2 mm and 6.2 mm pitch

PAI-4-FIX-5/6 GY - Test adapter

3035982

<https://www.phoenixcontact.com/us/products/3035982>



4 mm test adapter, for terminal blocks with 5.2 mm and 6.2 mm pitch

XT 2,5-QUATTRO-TG - Disconnect terminal block



1462727

<https://www.phoenixcontact.com/us/products/1462727>

PAI-4-FIX-5/6 VT - Test adapter

3035979

<https://www.phoenixcontact.com/us/products/3035979>



4 mm test adapter, for terminal blocks with 5.2 mm and 6.2 mm pitch

PAI-4-FIX-5/6 BN - Test adapter

3035981

<https://www.phoenixcontact.com/us/products/3035981>



4 mm test adapter, for terminal blocks with 5.2 mm and 6.2 mm pitch

XT 2,5-QUATTRO-TG - Disconnect terminal block



1462727

<https://www.phoenixcontact.com/us/products/1462727>

PAI-4-FIX-5/6 WH - Test adapter

3035983

<https://www.phoenixcontact.com/us/products/3035983>



4 mm test adapter, for terminal blocks with 5.2 mm and 6.2 mm pitch

PS-5 - Test plug

3030983

<https://www.phoenixcontact.com/us/products/3030983>



Test plug, Modular test plug, number of positions: 1, color: red

XT 2,5-QUATTRO-TG - Disconnect terminal block



1462727

<https://www.phoenixcontact.com/us/products/1462727>

DP PS-5 - Spacer plate

3036725

<https://www.phoenixcontact.com/us/products/3036725>



Spacer plate, depth: 29 mm, width: 5.2 mm, height: 22.4 mm, number of positions: 1, color: red

PS-5/2,3MM RD - Test plug

3038723

<https://www.phoenixcontact.com/us/products/3038723>



Test plug, number of positions: 1, color: red

XT 2,5-QUATTRO-TG - Disconnect terminal block



1462727

<https://www.phoenixcontact.com/us/products/1462727>

PROJECT COMPLETE - Software

1050453

<https://www.phoenixcontact.com/us/products/1050453>



Intuitive planning and marking software for configuring terminal strips and for professional marking of marking materials for terminal blocks, conductors, cables, devices, and systems. The software is available for download

CLIPFIX 35 - End bracket

3022218

<https://www.phoenixcontact.com/us/products/3022218>



Quick mounting end clamp for NS 35/7,5 DIN rail or NS 35/15 DIN rail, with marking option, width: 9.5 mm, color: gray

XT 2,5-QUATTRO-TG - Disconnect terminal block



1462727

<https://www.phoenixcontact.com/us/products/1462727>

CLIPFIX 35-5 - End bracket

3022276

<https://www.phoenixcontact.com/us/products/3022276>

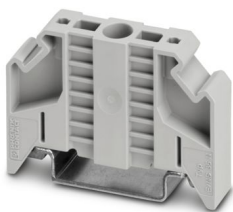


Quick mounting end clamp for NS 35/7,5 DIN rail or NS 35/15 DIN rail, with marking option, with parking option for FBS...5, FBS...6, KSS 5, KSS 6, width: 5.15 mm, color: gray

E/NS 35 N - End bracket

0800886

<https://www.phoenixcontact.com/us/products/0800886>



End clamp, width: 9.5 mm, color: gray

XT 2,5-QUATTRO-TG - Disconnect terminal block



1462727

<https://www.phoenixcontact.com/us/products/1462727>

CRIMPFOX CENTRUS 6S - Crimping pliers

1213144

<https://www.phoenixcontact.com/us/products/1213144>



Crimping pliers, for uninsulated and insulated ferrules, DIN 46228 Part 1 and 4, from 0.14 mm² ... 6 mm², also for TWIN ferrules up to 2 x 4 mm², automatic cross section adjustment, lateral insertion, equipped with fall protection

CRIMPFOX CENTRUS 10S - Crimping pliers

1213154

<https://www.phoenixcontact.com/us/products/1213154>



Crimping pliers, for uninsulated and insulated ferrules, DIN 46228 Part 1 and 4, from 0.14 mm² ... 10 mm², also for TWIN ferrules up to 2 x 4 mm², automatic cross section adjustment, lateral insertion, equipped with fall protection

XT 2,5-QUATTRO-TG - Disconnect terminal block



1462727

<https://www.phoenixcontact.com/us/products/1462727>

CRIMPFOX CENTRUS 6H - Crimping pliers

1213146

<https://www.phoenixcontact.com/us/products/1213146>



Crimping pliers, for uninsulated and insulated ferrules, DIN 46228 Part 1 and 4, from 0.14 mm² ... 6 mm², also for TWIN ferrules up to 2 x 4 mm², automatic cross section adjustment, lateral insertion, equipped with fall protection

CRIMPFOX CENTRUS 10H - Crimping pliers

1213156

<https://www.phoenixcontact.com/us/products/1213156>



Crimping pliers, for uninsulated and insulated ferrules, DIN 46228 Part 1 and 4, from 0.14 mm² ... 10 mm², also for TWIN ferrules up to 2 x 4 mm², automatic cross section adjustment, lateral insertion, equipped with fall protection

XT 2,5-QUATTRO-TG - Disconnect terminal block



1462727

<https://www.phoenixcontact.com/us/products/1462727>

CRIMPFOX 10S - Crimping pliers

1212045

<https://www.phoenixcontact.com/us/products/1212045>



Crimping pliers, for ferrules without insulating collar according to DIN 46228 Part 1 and ferrules with insulating collar according to DIN 46228 Part 4, 0.14 mm² ... 10 mm², unlockable pressure lock, lateral entry

CRIMPFOX 6H - Crimping pliers

1212046

<https://www.phoenixcontact.com/us/products/1212046>



Crimping pliers, for ferrules without insulating collar according to DIN 46228 Part 1 and ferrules with insulating collar according to DIN 46228 Part 4, 0.14 mm² ... 6 mm², unlockable pressure lock, lateral entry

XT 2,5-QUATTRO-TG - Disconnect terminal block



1462727

<https://www.phoenixcontact.com/us/products/1462727>

CRIMPFOX 2,5-M - Crimping pliers

1212719

<https://www.phoenixcontact.com/us/products/1212719>



Crimping pliers, for ferrules without insulating collar according to DIN 46228 Part 1 and ferrules with insulating collar according to DIN 46228 Part 4, 0.25 mm² ... 2.5 mm², lateral entry, trapezoidal crimp

CRIMPFOX 6-M - Crimping pliers

1212720

<https://www.phoenixcontact.com/us/products/1212720>



Crimping pliers, for ferrules without insulating collar according to DIN 46228 Part 1 and ferrules with insulating collar according to DIN 46228 Part 4, 0.25 mm² ... 6.0 mm², lateral entry, trapezoidal crimp

XT 2,5-QUATTRO-TG - Disconnect terminal block



1462727

<https://www.phoenixcontact.com/us/products/1462727>

CRIMPFOX 6 - Crimping pliers

1212034

<https://www.phoenixcontact.com/us/products/1212034>



Crimping pliers, for ferrules without insulating collar according to DIN 46228 Part 1 and ferrules with insulating collar according to DIN 46228 Part 4, 0.25 mm² ... 6.0 mm², lateral entry, trapezoidal crimp

CRIMPFOX 6T - Crimping pliers

1212037

<https://www.phoenixcontact.com/us/products/1212037>



Crimping pliers, for ferrules without insulating collar according to DIN 46228 Part 1 and ferrules with insulating collar according to DIN 46228 Part 4, 0.25 mm² ... 6 mm², lateral entry, trapezoidal crimp

XT 2,5-QUATTRO-TG - Disconnect terminal block



1462727

<https://www.phoenixcontact.com/us/products/1462727>

CRIMPFOX 6T-F - Crimping pliers

1212038

<https://www.phoenixcontact.com/us/products/1212038>



Crimping pliers, for ferrules without insulating collar according to DIN 46228 Part 1 and ferrules with insulating collar according to DIN 46228 Part 4, 0.25 mm² ... 6 mm², front entry, trapezoidal crimp

CRIMPFOX 6S-F - Crimping pliers

1212043

<https://www.phoenixcontact.com/us/products/1212043>



Crimping pliers, for ferrules without insulating collar according to DIN 46228 Part 1 and ferrules with insulating collar according to DIN 46228 Part 4, 0.5 mm² ... 6 mm², front entry, square crimp

XT 2,5-QUATTRO-TG - Disconnect terminal block

1462727

<https://www.phoenixcontact.com/us/products/1462727>



CRIMPFOX-M - Crimping pliers

1212072

<https://www.phoenixcontact.com/us/products/1212072>

Basic pliers, for accommodating dies for a wide range of type of contacts



P-FIX - Feed-through connector

3038956

<https://www.phoenixcontact.com/us/products/3038956>

Feed-through connector, width: 4 mm, height: 10.5 mm, color: gray



XT 2,5-QUATTRO-TG - Disconnect terminal block



1462727

<https://www.phoenixcontact.com/us/products/1462727>

P-CO - Component connector

3036796

<https://www.phoenixcontact.com/us/products/3036796>



Component connector, for installing components that can be individually selected, nom. voltage: 250 V, nominal current: 6 A, connection method: Plug-in connection, pitch: 5.2 mm, depth: 33.2 mm, width: 5.1 mm, height: 24.2 mm, number of positions: 1, color: gray, mounting type: Pluggable (slot)

P-CO 1N4007/R-L - Component connector

3032457

<https://www.phoenixcontact.com/us/products/3032457>



Component connector, with diode 1N4007, depth: 33.3 mm, width: 5.2 mm, height: 24.2 mm, number of positions: 1, color: gray, mounting type: Plug-in mounting

XT 2,5-QUATTRO-TG - Disconnect terminal block



1462727

<https://www.phoenixcontact.com/us/products/1462727>

P-CO 1N4007/L-R - Component connector

3032460

<https://www.phoenixcontact.com/us/products/3032460>



Component connector, with diode 1N4007, depth: 33.3 mm, width: 5.2 mm, height: 24.2 mm, number of positions: 1, color: gray, mounting type: Plug-in mounting

P-CO XL - Component connector

3036797

<https://www.phoenixcontact.com/us/products/3036797>



Component connector, for installing components that can be individually selected up to a diameter of 10 mm and power dissipation of up to 1 W, nom. voltage: 400 V, nominal current: 10 A, connection method: Plug-in connection, depth: 37.5 mm, width: 12.3 mm, height: 41.2 mm, number of positions: 1, color: gray, mounting type: Pluggable (slot)

XT 2,5-QUATTRO-TG - Disconnect terminal block



1462727

<https://www.phoenixcontact.com/us/products/1462727>

P-CO XL SKN - Component connector

3036798

<https://www.phoenixcontact.com/us/products/3036798>



Component connector, specifically for holding the SKN 2,5 diode, nom. voltage: 400 V, nominal current: 1.25 A, connection method: Plug-in connection, depth: 37.5 mm, width: 12.3 mm, height: 41.2 mm, number of positions: 1, color: gray, mounting type: Pluggable (slot)

P-CO 2-5 R47K - Component connector

3032447

<https://www.phoenixcontact.com/us/products/3032447>



Component connector, with 47 kOhm resistance for wire-break monitoring, pitch: 5.2 mm, depth: 34.8 mm, width: 4.1 mm, height: 8.9 mm, number of positions: 2, color: black

XT 2,5-QUATTRO-TG - Disconnect terminal block



1462727

<https://www.phoenixcontact.com/us/products/1462727>

P-FU 5X20-5 - Fuse plug

3209235

<https://www.phoenixcontact.com/us/products/3209235>



Fuse plug, nom. voltage: 400 V, nominal current: 6.3 A, connection method: Plug-in connection, fuse type: G / 5 x 20, mounting type: Plug-in mounting, color: black

P-FU 5X20 LED 24-5 - Fuse plug

3209248

<https://www.phoenixcontact.com/us/products/3209248>



Fuse plug, nom. voltage: 24 V, nominal current: 6.3 A, connection method: Plug-in connection, fuse type: G / 5 x 20, mounting type: Plug-in mounting, color: black

XT 2,5-QUATTRO-TG - Disconnect terminal block



1462727

<https://www.phoenixcontact.com/us/products/1462727>

P-FU 5X20 LED 60-5 - Fuse plug

3209251

<https://www.phoenixcontact.com/us/products/3209251>



Fuse plug, nom. voltage: 250 V, nominal current: 6.3 A, connection method: Plug-in connection, fuse type: G / 5 x 20, mounting type: Plug-in mounting, color: black

P-FU 5X20 LED 250-5 - Fuse plug

3209264

<https://www.phoenixcontact.com/us/products/3209264>



Fuse plug, nom. voltage: 250 V, nominal current: 6.3 A, connection method: Plug-in connection, fuse type: G / 5 x 20, mounting type: Plug-in mounting, color: black

XT 2,5-QUATTRO-TG - Disconnect terminal block



1462727

<https://www.phoenixcontact.com/us/products/1462727>

P-DI - Isolating plug

3036783

<https://www.phoenixcontact.com/us/products/3036783>



Isolating plug, depth: 23.1 mm, width: 3.5 mm, height: 10.8 mm, color: orange

P-DI GY - Isolating plug

3047390

<https://www.phoenixcontact.com/us/products/3047390>



Isolating plug, depth: 23.1 mm, width: 3.5 mm, height: 10.8 mm, color: gray

XT 2,5-QUATTRO-TG - Disconnect terminal block



1462727

<https://www.phoenixcontact.com/us/products/1462727>

P-DI GN - Isolating plug

1071062

<https://www.phoenixcontact.com/us/products/1071062>

Isolating plug, depth: 23.1 mm, width: 3.5 mm, height: 10.8 mm, color: green

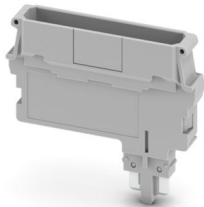


P-CO L - Component connector

1782755

<https://www.phoenixcontact.com/us/products/1782755>

Component connector, nom. voltage: 400 V, nominal current: 10 A, connection method: Plug-in connection, depth: 35.2 mm, width: 7.3 mm, height: 41.2 mm, color: gray, mounting type: Pluggable (slot)



Phoenix Contact 2025 © - all rights reserved
<https://www.phoenixcontact.com>

Phoenix Contact USA
586 Fulling Mill Road
Middletown, PA 17057, United States
(+717) 944-1300
info@phoenixcon.com