

VL3 UPC 2430 - Box PC



1433152

<https://www.phoenixcontact.com/us/products/1433152>

Please be informed that the data shown in this PDF document is generated from our online catalog. Please find the complete data in the user documentation. Our general terms of use for downloads are valid.



Compact IP30-rated, fanless industrial box PC (BPC) with efficient, long-term available Intel Atom® x6413E processor, 16 GB LPDDR4 RAM and 120 GB NVMe SSD onboard storage.

Commercial data

Item number	1433152
Packing unit	25 pc
Minimum order quantity	1 pc
Sales key	DR12
Product key	DRBAAA
GTIN	4063151799861
Weight per piece (including packing)	1,060 g
Weight per piece (excluding packing)	700 g
Customs tariff number	84715000
Country of origin	TW

Technical data

Notes

Note on application

Note on application	Only for industrial use
---------------------	-------------------------

Product properties

Product type	Box PC
--------------	--------

Computer data

Trusted Platform Module	dTPM 2.0, Infineon® SLB9670 (Encryption technology not Chinese)
Operating system	without operating system
RAM	16 GB LPDDR4
Data storage system	120 GB, 3D TLC (onboard)
Cooling	passive
Raid system	without RAID system

Display

MTBF	58,969 hours at 60°C
------	----------------------

Electrical properties

Service life of battery	5 years (typical)
-------------------------	-------------------

Supply

Supply voltage (DC)	24 V DC 20 %
Supply voltage range	19.2 V DC ... 28.8 V DC
Max. current consumption	2.08 A (24 V DC)
Typical current consumption	0.58 A (24 V DC)

Real-time clock

Realtime clock	Yes (battery-backed)
----------------	----------------------

Connection data

Power supply

Connection method	Push-in spring connection
Conductor cross-section, rigid	0.2 mm² ... 1.5 mm²
Conductor cross-section, flexible	0.2 mm² ... 1.5 mm²
Conductor cross-section AWG	24 ... 16
Stripping length	10 mm

Interfaces

Interfaces	2x USB 3.1 Gen. 1, Typ A
Monitor output	1x DP++ 1.4
Network	2x Ethernet (10/100/1000 Mbps), RJ45

VL3 UPC 2430 - Box PC



1433152

<https://www.phoenixcontact.com/us/products/1433152>

LAN chipset	Intel® i225-IT
-------------	----------------

Dimensions

External dimensions

Width / Height / Depth	100 mm / 50 mm / 100 mm (Housing dimensions)
------------------------	--

Material specifications

Housing material	Aluminum / steel sheet DC01
------------------	-----------------------------

Environmental and real-life conditions

Ambient conditions

Degree of protection	IP30
Ambient temperature (operation)	-20 °C ... 60 °C (0...2000 m altitude, with 0.5 m/s air flow)
	-20 °C ... 54 °C (2001 ... 3000 m altitude, with 0.5 m/s air flow)
Ambient temperature (storage/transport)	-40 °C ... 70 °C
Altitude	3000 m (above sea level)
Permissible humidity (operation)	10 % ... 95 % (non-condensing)
Permissible humidity (storage/transport)	10 % ... 95 % (non-condensing)
Shock	15g, 11 ms in accordance with IEC 60068-2-27
Vibration (operation)	1g, according to EN 60068-2-6

Approvals

Conformity/Approvals

Conformance	CE-compliant
UL, USA / Canada	UL 61010-1, UL 61010-2-201
	Class I, Div. 2, Groups A, B, C, D T4

Mounting

Mounting type	DIN rail mounting
---------------	-------------------

VL3 UPC 2430 - Box PC



1433152

<https://www.phoenixcontact.com/us/products/1433152>

Approvals

To download certificates, visit the product detail page: <https://www.phoenixcontact.com/us/products/1433152>



IECEE CB Scheme

Approval ID: US-43772-M1-UL



cULus Listed

Approval ID: E238705 D16:D1058



IECEE CB Scheme

Approval ID: US-43772-M1-UL



cULus Listed

Approval ID: E238705 D16:D1058



cULus Listed

Approval ID: US-UL-2412129-2



cULus Listed

Approval ID: US-UL-2412129-2

VL3 UPC 2430 - Box PC

1433152

<https://www.phoenixcontact.com/us/products/1433152>



Classifications

ECLASS

ECLASS-13.0	19200102
ECLASS-15.0	19200102

ETIM

ETIM 9.0	EC001413
----------	----------

Environmental product compliance

EU RoHS

Fulfills EU RoHS substance requirements	Yes
Exemption	7(a)

China RoHS

Environment friendly use period (EFUP)	EFUP-15
	An article-related China RoHS declaration table can be found in the download area for the respective article under "Manufacturer declaration". For all articles with EFUP-E, no China RoHS declaration table issued and required.

EU REACH SVHC

REACH candidate substance (CAS No.)	Lead(CAS: 7439-92-1)
-------------------------------------	----------------------

VL3 UPC 2430 - Box PC



1433152

<https://www.phoenixcontact.com/us/products/1433152>

Accessories

SI-RND-U1A - Data interface

1425185

<https://www.phoenixcontact.com/us/products/1425185>

Service socket with USB A 3.0 (socket/socket), with protective cover



DP TO VGA ADPTR - Adapter

2400173

<https://www.phoenixcontact.com/us/products/2400173>

DisplayPort to VGA video adapter



VL3 UPC 2430 - Box PC

1433152

<https://www.phoenixcontact.com/us/products/1433152>



DP TO DVI ADPTR - Adapter

2400174

<https://www.phoenixcontact.com/us/products/2400174>

DisplayPort to DVI-i video adapter



VL 2.0M DP CABLE - Connecting cable

2404774

<https://www.phoenixcontact.com/us/products/2404774>

DisplayPort (DP) cable (2 m) for use with industrial computers



VL3 UPC 2430 - Box PC

1433152

<https://www.phoenixcontact.com/us/products/1433152>

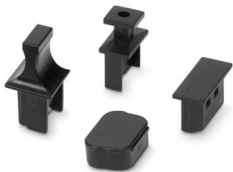


VL3 UPC PORT COVER KIT - Cover

1452726

<https://www.phoenixcontact.com/us/products/1452726>

Cover



VL3 UPC WALL MOUNT KIT - Mounting kit

1452685

<https://www.phoenixcontact.com/us/products/1452685>

Mounting kit



1433152

<https://www.phoenixcontact.com/us/products/1433152>

MC 1,5/ 3-STF-3,5 - PCB connector

1847068

<https://www.phoenixcontact.com/us/products/1847068>

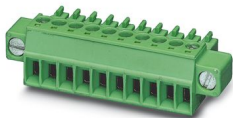


PCB connector, nominal cross section: 1.5 mm², color: green, nominal current: 8 A, rated voltage (III/2): 160 V, contact surface: Sn, contact connection type: Socket, number of potentials: 3, number of rows: 1, number of positions: 3, number of connections: 3, product range: MC 1,5/...-STF, pitch: 3.5 mm, connection method: Screw connection with tension sleeve, screw head form: L Slotted, conductor/PCB connection direction: 0 °, plug-in system: COMBICON MC 1,5, locking: Screw locking mechanism, mounting method: Screw flange, type of packaging: packed in cardboard

MC 1,5/ 3-STF-3,5 BD:1-3 - PCB connector

1751312

<https://www.phoenixcontact.com/us/products/1751312>



PCB connector, nominal cross section: 1.5 mm², color: green, nominal current: 8 A, rated voltage (III/2): 160 V, contact surface: Sn, contact connection type: Socket, number of potentials: 3, number of rows: 1, number of positions: 3, number of connections: 3, product range: MC 1,5/...-STF, pitch: 3.5 mm, connection method: Screw connection with tension sleeve, screw head form: L Slotted, conductor/PCB connection direction: 0 °, plug-in system: COMBICON MC 1,5, locking: Screw locking mechanism, mounting method: Screw flange, type of packaging: packed in cardboard

VL3 UPC 2430 - Box PC



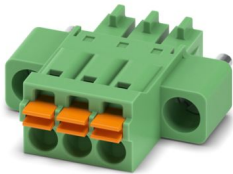
1433152

<https://www.phoenixcontact.com/us/products/1433152>

FMC 1,5/ 3-STF-3,5 - PCB connector

1966101

<https://www.phoenixcontact.com/us/products/1966101>



PCB connector, nominal cross section: 1.5 mm², color: green, nominal current: 8 A, rated voltage (III/2): 160 V, contact surface: Sn, contact connection type: Socket, number of potentials: 3, number of rows: 1, number of positions: 3, number of connections: 3, product range: FMC 1,5/...-STF, pitch: 3.5 mm, connection method: Push-in spring connection, conductor/PCB connection direction: 0 °, plug-in system: COMBICON FMC 1,5 - MCDN 1,5, locking: Screw locking mechanism, mounting method: Screw flange, type of packaging: packed in cardboard

QUINT4-PS/24DC/24DC/5/SC - DC/DC converter

1046800

<https://www.phoenixcontact.com/us/products/1046800>



Primary-switched DC/DC converter, QUINT POWER, DIN rail mounting, SFB Technology (Selective Fuse Breaking), input: 24 V DC, output: 24 V DC / 5 A

VL3 UPC 2430 - Box PC



1433152

<https://www.phoenixcontact.com/us/products/1433152>

QUINT4-PS/24DC/24DC/5/PT - DC/DC converter

2910119

<https://www.phoenixcontact.com/us/products/2910119>

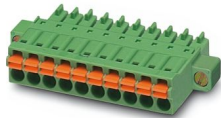


Primary-switched DC/DC converter, QUINT POWER, DIN rail mounting, SFB Technology (Selective Fuse Breaking), input: 24 V DC, output: 24 V DC / 5 A

FMC 1,5/ 3-STF-3,5 GY7035 - PCB connector

1561300

<https://www.phoenixcontact.com/us/products/1561300>



PCB connector, nominal cross section: 1.5 mm², color: light gray, nominal current: 8 A, rated voltage (III/2): 160 V, contact surface: Sn, contact connection type: Socket, number of rows: 1, number of positions: 3, product range: FMC 1,5/-STF, pitch: 3.5 mm, connection method: Push-in spring connection, conductor/PCB connection direction: 0 °, plug-in system: COMBICON FMC 1,5 - MCDN 1,5, locking: Screw locking mechanism, mounting method: Screw flange, type of packaging: packed in cardboard

VL3 UPC 2430 - Box PC

1433152

<https://www.phoenixcontact.com/us/products/1433152>



UTA 107/30 - Mounting adapter

2320089

<https://www.phoenixcontact.com/us/products/2320089>

Universal DIN rail adapter



TP/WP 6000 RTC BATTERY KIT - Battery

1289761

<https://www.phoenixcontact.com/us/products/1289761>

Replacement battery for TP 6000 and WP 6000 panels, and VL3 BPC/PPC/UPC.



Phoenix Contact 2025 © - all rights reserved
<https://www.phoenixcontact.com>

Phoenix Contact USA
586 Fulling Mill Road
Middletown, PA 17057, United States
(+717) 944-1300
info@phoenixcon.com