

SACB- 8/4-L-PTP-M8 HD - Distributor box



1197620

<https://www.phoenixcontact.com/us/products/1197620>

Please be informed that the data shown in this PDF document is generated from our online catalog. Please find the complete data in the user documentation. Our general terms of use for downloads are valid.



Distributor box, application: Standard, connection method: M8 socket Metal, number of slots: 8, number of positions: 4, coding: A, slot assignment: Double, status display: yes, PNP; master cable connection: plug-in push-in spring connection 180°, shielding: no

Your advantages

- Safety in the field, thanks to molded housing and high degree of protection
- Convenient: increased machine availability thanks to quick and easy diagnostics
- Flexible: distributor box with connector hood for on-site assembly
- Save space: distributor box with double occupancy for two sensors in one slot

Commercial data

| | |
|--------------------------------------|---------------|
| Item number | 1197620 |
| Packing unit | 1 pc |
| Minimum order quantity | 1 pc |
| Sales key | BF40 |
| Product key | AF3BCD |
| GTIN | 4063151258306 |
| Weight per piece (including packing) | 242.5 g |
| Weight per piece (excluding packing) | 242 g |
| Customs tariff number | 85366990 |
| Country of origin | DE |

Technical data

Notes

| | |
|---------------------|---|
| Assembly note | NOTE: Observe the permissible bending radii when routing cables, since the degree of protection may be at risk if the bending forces are too high. Reduce mechanical loads upstream of the connector, e.g., by using cable ties. |
| Note on application | Unused slots are to be sealed off prior to commissioning. Suitable sealing elements are to be found under "Accessories". |

Product properties

| | |
|---------------------|-----------------|
| Product type | Distributor box |
| Application | Standard |
| Number of positions | 4 |
| Number of slots | 8 |
| Coding | A |
| LED | yes |

System properties

| | |
|------------------------|----------------|
| Local diagnostics | |
| Monitored function | Supply voltage |
| Optical representation | Green LED |

Electrical properties

| | |
|---|-------------------------------|
| Max. operating voltage U_{max} | 30 V DC |
| Local diagnostics | Supply voltage Green LED |
| | Status display I/O Yellow LED |
| Nominal voltage U_N | 24 V DC |
| Rated current, total | 8 A |
| Max. current carrying capacity per path | 2 A |
| Current carrying capacity per slot | 2 A |

Connection data

| | |
|--|---|
| Conductor connection | |
| Sensor/actuator connection system | M8 socket |
| Conductor cross section Flexible signal line | 0.2 mm ² ... 1.5 mm ² |
| Conductor cross section Flexible power supply | 0.2 mm ² ... 1.5 mm ² |
| Connection cross section AWG Flexible signal line | 24 ... 16 |
| Connection cross section AWG Flexible power supply | 24 ... 16 |
| Stripping length Signal line | 10 mm |
| Stripping length of the sheath | 70 mm (Master cable) |
| Tightening torque, cover screw | 1 Nm |
| Tightening torque of mounting screw for fixing the housing | 0.8 Nm |

SACB- 8/4-L-PTP-M8 HD - Distributor box



1197620

<https://www.phoenixcontact.com/us/products/1197620>

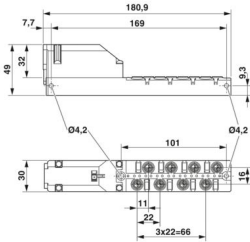
Connection assignment

| Slot/position = Wire color or connection | |
|--|-----------------------------------|
| | 1 / 4 (A) = 1 / 4 |
| | 1 / 2 (B) = 1 / 2 |
| | 2 / 4 (A) = 2 / 4 |
| | 2 / 2 (B) = 2 / 2 |
| | 3 / 4 (A) = 3 / 4 |
| | 3 / 2 (B) = 3 / 2 |
| | 4 / 4 (A) = 4 / 4 |
| | 4 / 2 (B) = 4 / 2 |
| | 5 / 4 (A) = 5 / 4 |
| | 5 / 2 (B) = 5 / 2 |
| | 6 / 4 (A) = 6 / 4 |
| | 6 / 2 (B) = 6 / 2 |
| | 7 / 4 (A) = 7 / 4 |
| | 7 / 2 (B) = 7 / 2 |
| | 8 / 4 (A) = 8 / 4 |
| | 8 / 2 (B) = 8 / 2 |
| | 1-8 / 1 (+ 24 V) = U _N |
| | 1-8 / 3 (0 V) = 0 V |

Signaling

| | |
|------------------------|-----|
| Status display present | yes |
|------------------------|-----|

Dimensions

| | |
|--------------------------|--|
| Dimensional drawing |  |
| Width | 30 mm |
| Height | 49 mm |
| Length | 181 mm |
| Wrench size, union nut | 24 mm |
| Wrench size, counter nut | 24 mm |

Material specifications

| | |
|---------------------------|----------|
| Material Threaded sleeve | Cu alloy |
| Material Housing | PBT |
| Material Molding compound | PUR |
| Seal material O-ring | FKM |
| Seal material | FKM |

SACB- 8/4-L-PTP-M8 HD - Distributor box



1197620

<https://www.phoenixcontact.com/us/products/1197620>

| | |
|--|------------|
| Contact material | CuZn |
| Contact surface material | Ni/Au |
| Contact carrier material | PBT |
| Material of contact, master cable side | CU alloy |
| Material of the contact carrier on the master cable side | PA |
| Material of contact surface, master cable side | tin-plated |

Cable/line

| | |
|-------------------------|-----------------------------------|
| External cable diameter | 6 mm ... 12 mm |
| Connection method | plug-in push-in spring connection |

Environmental and real-life conditions

Ambient conditions

| | |
|---------------------------------|------------------|
| Degree of protection | IP67 |
| Ambient temperature (operation) | -25 °C ... 80 °C |

Standards and regulations

| | |
|--------------------------|-----------------|
| Standard designation | M8 connector |
| Standards/specifications | IEC 61076-2-104 |

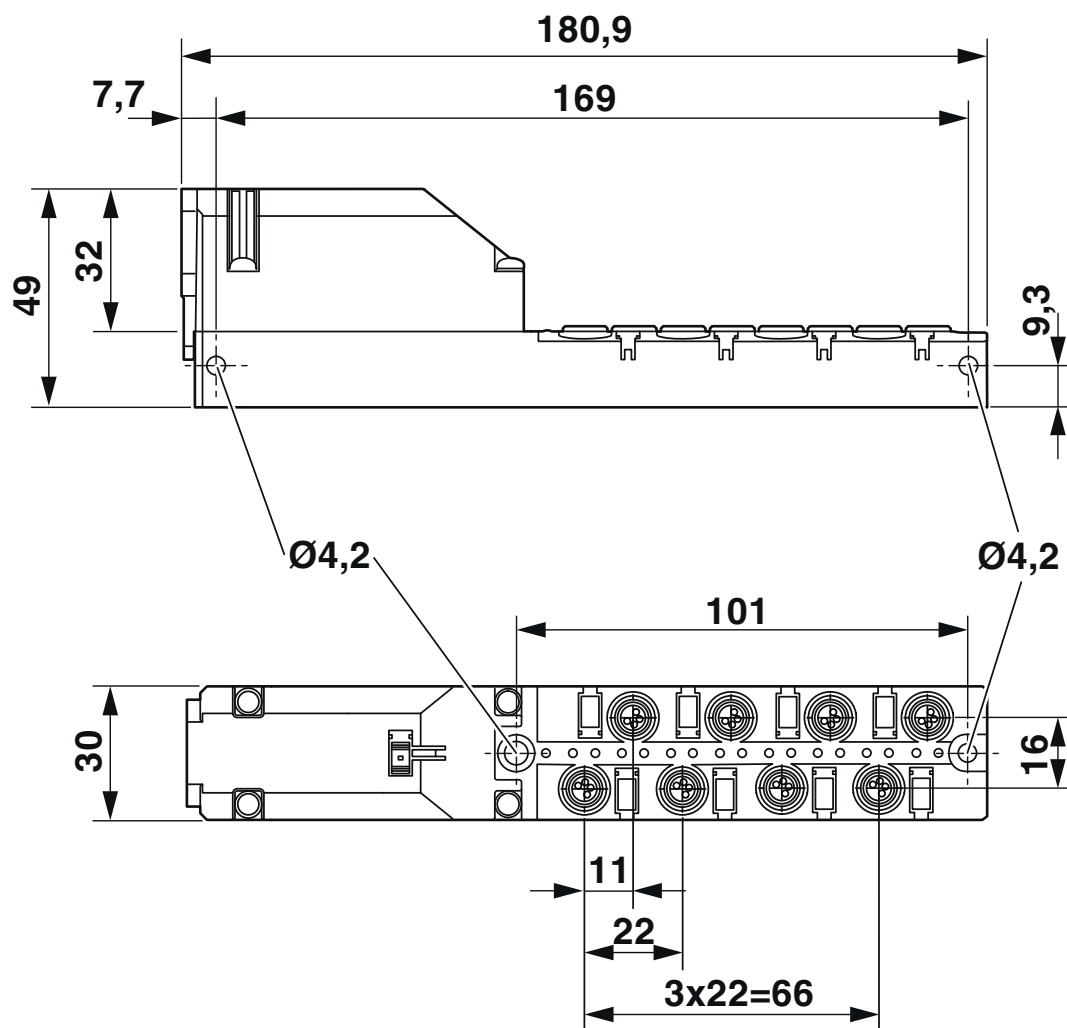
SACB- 8/4-L-PTP-M8 HD - Distributor box

1197620

<https://www.phoenixcontact.com/us/products/1197620>

Drawings

Dimensional drawing



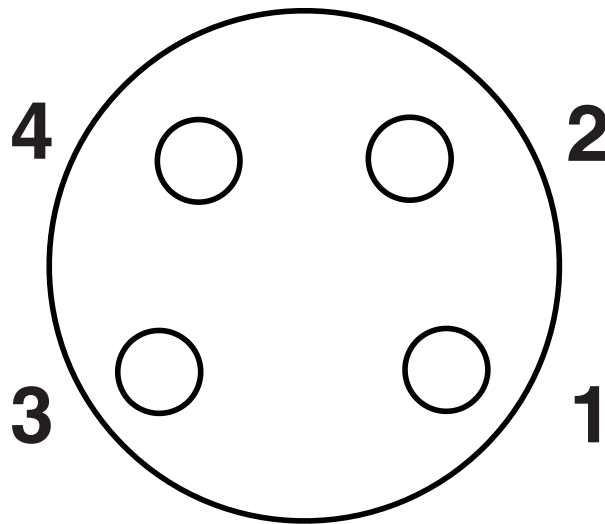
SACB- 8/4-L-PTP-M8 HD - Distributor box

1197620

<https://www.phoenixcontact.com/us/products/1197620>



Schematic diagram



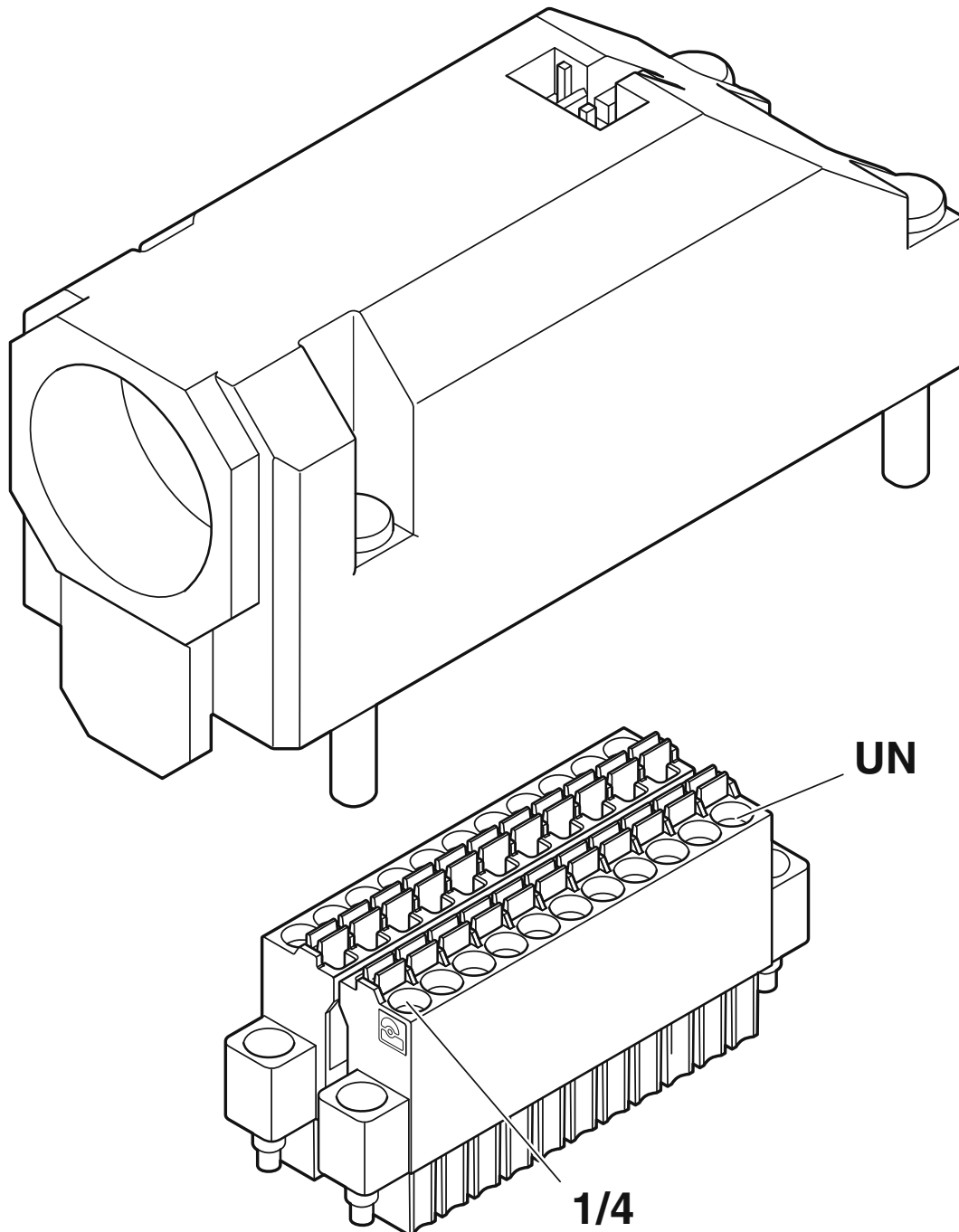
M8 slot, socket, 4-pos.

SACB- 8/4-L-PTP-M8 HD - Distributor box

1197620

<https://www.phoenixcontact.com/us/products/1197620>

Schematic diagram



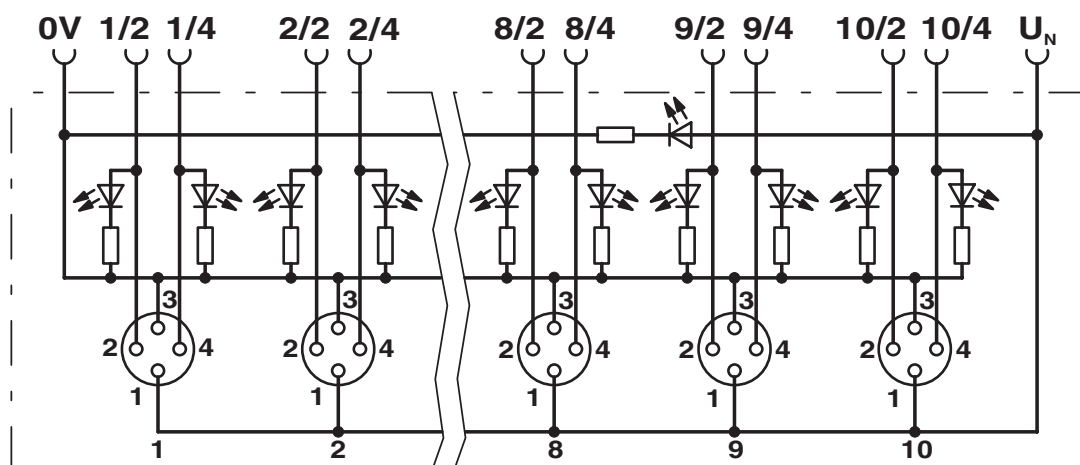
PCB connector positioning - the UN connection is on the end of the connector hood opposite the cable gland

SACB- 8/4-L-PTP-M8 HD - Distributor box

1197620

<https://www.phoenixcontact.com/us/products/1197620>

Circuit diagram



SACB- 8/4-L-PTP-M8 HD - Distributor box



1197620

<https://www.phoenixcontact.com/us/products/1197620>

Classifications

ECLASS

| | |
|-------------|----------|
| ECLASS-13.0 | 27440111 |
| ECLASS-15.0 | 27440111 |

ETIM

| | |
|----------|----------|
| ETIM 9.0 | EC003558 |
|----------|----------|

UNSPSC

| | |
|-------------|----------|
| UNSPSC 21.0 | 31251500 |
|-------------|----------|

SACB- 8/4-L-PTP-M8 HD - Distributor box



1197620

<https://www.phoenixcontact.com/us/products/1197620>

Environmental product compliance

| | |
|---|--|
| EU RoHS | |
| Fulfills EU RoHS substance requirements | Yes, No exemptions |
| China RoHS | |
| Environment friendly use period (EFUP) | EFUP-E |
| | No hazardous substances above the limits |
| EU REACH SVHC | |
| REACH candidate substance (CAS No.) | No substance above 0.1 wt% |

Phoenix Contact 2025 © - all rights reserved
<https://www.phoenixcontact.com>

Phoenix Contact USA
586 Fulling Mill Road
Middletown, PA 17057, United States
(+717) 944-1300
info@phoenixcon.com