

NBC-PP-J1PGY-S/R4IDC8 - DIN rail adapter



1100077

<https://www.phoenixcontact.com/us/products/1100077>

Please be informed that the data shown in this PDF document is generated from our online catalog. Please find the complete data in the user documentation. Our general terms of use for downloads are valid.



DIN rail adapter, degree of protection: IP20, number of positions: 8, 10 Gbps, CAT6_A, material: PC-GF10, connection method: IDC connection, connection cross section: AWG 26- 22, Item set, DIN rail adapter including RJ45 cable connection module

Product description

Compact DIN rail adapter, including RJ45 cable connection module, with optional shield connection, with dust protection cover, one-piece design

Your advantages

- Compact design
- For distributing copper and fiber optic cabling
- Front release without special tool
- One-Piece Design
- Assembly without special tools
- Optional overall shielding braid for copper modules
- Security elements available as accessories
- Adapter-less integration of module inserts
- Marking service: Phoenix Contact can custom-mark all labels according to your requirements

Commercial data

Item number	1100077
Packing unit	1 pc
Minimum order quantity	1 pc
Sales key	AB18
Product key	ABNLAA
GTIN	4055626951447
Weight per piece (including packing)	49 g
Weight per piece (excluding packing)	49 g
Customs tariff number	85366990
Country of origin	DE

NBC-PP-J1PGY-S/R4IDC8 - DIN rail adapter



1100077

<https://www.phoenixcontact.com/us/products/1100077>

Set consists of

NBC-PP-G1PGY - DIN rail adapter

1041740

<https://www.phoenixcontact.com/us/products/1041740>

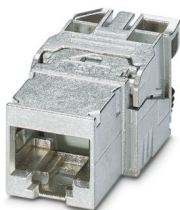


DIN rail adapter, design: Headers with shielding, degree of protection: IP20, material: PC-GF10, connection method: Quick connection, without assembled modules

CUC-I-J1ZNI-S/R4IDC8 - RJ45 jack insert

1417274

<https://www.phoenixcontact.com/us/products/1417274>



RJ45 jack insert, design: RJ45, degree of protection: IP20, number of positions: 8, 10 Gbps, CAT6_A, material: Metal, connection method: IDC connection, connection cross section: AWG 26- 22, cable outlet: straight, Adapter-free design, Ethernet

Technical data

Notes

Notes on operation	Set item with RJ45 cable connection module
--------------------	--

Product properties

Product type	Patch panel
Type	RJ45
Number of positions	8
Number of slots	1

Electrical properties

Rated voltage (III/3)	72 V (DC)
Frequency range	500 MHz
Contact resistance	≤ 5 mΩ (Shield-ground, optional)
Transmission medium	Copper
Transmission speed	10 Gbps

Connection data

Connection method	IDC connection
-------------------	----------------

Dimensions

Width	18 mm
Height	80 mm
Depth	64.6 mm

Material specifications

Flammability rating according to UL 94	V0
Housing material	PC-GF10
Material, protective cover	PC

Cable/line

External cable diameter	4.5 mm ... 9 mm
-------------------------	-----------------

Environmental and real-life conditions

Ambient conditions

Degree of protection	IP20
Ambient temperature (operation)	-10 °C ... 60 °C
Ambient temperature (storage/transport)	-40 °C ... 60 °C

Mounting

Mounting type	DIN rail mounting
---------------	-------------------

NBC-PP-J1PGY-S/R4IDC8 - DIN rail adapter



1100077

<https://www.phoenixcontact.com/us/products/1100077>

Approvals

🔗 To download certificates, visit the product detail page: <https://www.phoenixcontact.com/us/products/1100077>



EAC

Approval ID: 19060508

NBC-PP-J1PGY-S/R4IDC8 - DIN rail adapter



1100077

<https://www.phoenixcontact.com/us/products/1100077>

Classifications

ECLASS

ECLASS-13.0	27440392
ECLASS-15.0	19170112

ETIM

ETIM 9.0	EC002943
----------	----------

UNSPSC

UNSPSC 21.0	39121400
-------------	----------

NBC-PP-J1PGY-S/R4IDC8 - DIN rail adapter



1100077
<https://www.phoenixcontact.com/us/products/1100077>

Environmental product compliance

EU RoHS	
Fulfills EU RoHS substance requirements	Yes, No exemptions
China RoHS	
Environment friendly use period (EFUP)	EFUP-E
	No hazardous substances above the limits
EU REACH SVHC	
REACH candidate substance (CAS No.)	No substance above 0.1 wt%

Phoenix Contact 2025 © - all rights reserved
<https://www.phoenixcontact.com>

Phoenix Contact USA
586 Fulling Mill Road
Middletown, PA 17057, United States
(+717) 944-1300
info@phoenixcon.com