

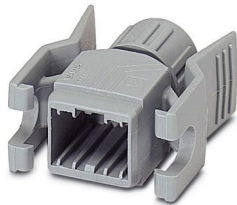
VS-08-T-G-RJ45/IP20 - RJ45 sleeve housing



1652295

<https://www.phoenixcontact.com/us/products/1652295>

Please be informed that the data shown in this PDF document is generated from our online catalog. Please find the complete data in the user documentation. Our general terms of use for downloads are valid.



RJ45 sleeve housing, IP20, for pin insert VS-08-ST-RJ45, with push-pull interlocking for panel mounting frames, inverted design, for Factoryline modular managed switches, for cable cross section 5.0 mm ... 6.5 mm

Commercial data

Item number	1652295
Packing unit	5 pc
Minimum order quantity	1 pc
Sales key	AB10
Product key	ABNAAZ
GTIN	4017918936174
Weight per piece (including packing)	6.1 g
Weight per piece (excluding packing)	5.201 g
Customs tariff number	85389099
Country of origin	DE

VS-08-T-G-RJ45/IP20 - RJ45 sleeve housing



1652295

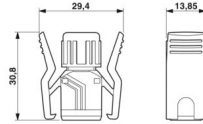
<https://www.phoenixcontact.com/us/products/1652295>

Technical data

Product properties

Product type	Bend protection sleeve
Type	RJ45
No. of cable outlets	1
Cable outlet	straight

Dimensions

Dimensional drawing	
Width	13.8 mm
Height	29.4 mm
Length	31.5 mm

Material specifications

Color	gray
Flammability rating according to UL 94	V0
Housing material	PA
Material for screw connection	PA

Cable/line

External cable diameter	5 mm ... 6.5 mm
-------------------------	-----------------

Mechanical properties

Mechanical data

Insertion/withdrawal cycles	≥ 750
-----------------------------	-------

Environmental and real-life conditions

Ambient conditions

Degree of protection	IP20
Ambient temperature (operation)	-40 °C ... 80 °C

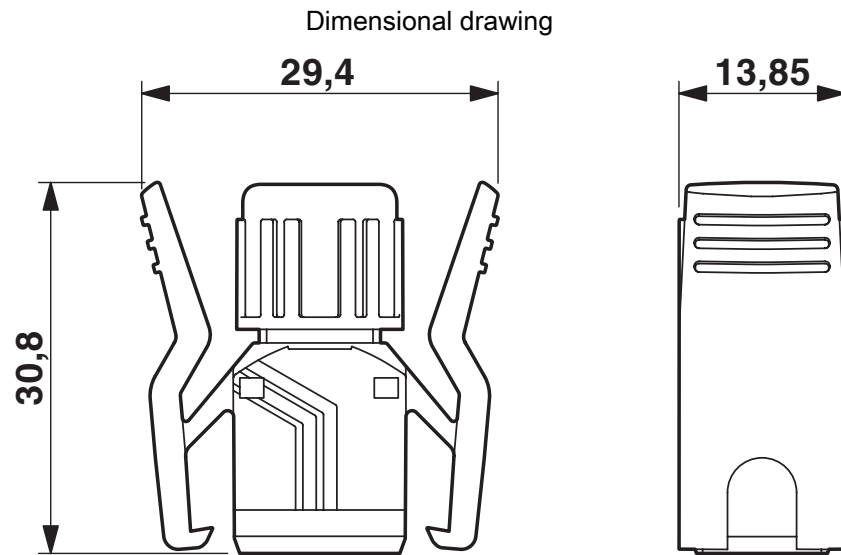
VS-08-T-G-RJ45/IP20 - RJ45 sleeve housing

1652295

<https://www.phoenixcontact.com/us/products/1652295>



Drawings



RJ45 sleeve housing, IP20, turned

VS-08-T-G-RJ45/IP20 - RJ45 sleeve housing



1652295

<https://www.phoenixcontact.com/us/products/1652295>

Classifications

ECLASS

ECLASS-15.0	27440392
ECLASS-13.0	27440392

ETIM

ETIM 9.0	EC002943
----------	----------

UNSPSC

UNSPSC 21.0	31261500
-------------	----------

VS-08-T-G-RJ45/IP20 - RJ45 sleeve housing



1652295

<https://www.phoenixcontact.com/us/products/1652295>

Environmental product compliance

EU RoHS

Fulfills EU RoHS substance requirements	Yes, No exemptions
---	--------------------

China RoHS

Environment friendly use period (EFUP)	EFUP-E
	No hazardous substances above the limits

EU REACH SVHC

REACH candidate substance (CAS No.)	No substance above 0.1 wt%
-------------------------------------	----------------------------

Phoenix Contact 2025 © - all rights reserved
<https://www.phoenixcontact.com>

Phoenix Contact USA
586 Fulling Mill Road
Middletown, PA 17057, United States
(+717) 944-1300
info@phoenixcon.com