

# RC-12S1N129006 - Coupler connector

1598678

<https://www.phoenixcontact.com/us/products/1598678>



Please be informed that the data shown in this PDF document is generated from our online catalog. Please find the complete data in the user documentation. Our general terms of use for downloads are valid.



M23, Coupler connector, series: RC, straight, shielded: yes, Screw locking mechanism, No. of pos.: 12, Direction of rotation: Standard, contact connection type: Socket, Solder cup, cable diameter range: 7.5 mm ... 9.5 mm, coding: N. This product is in the process of being discontinued. This product must no longer be considered for new projects. Please contact your sales representative for alternatives.

## Commercial data

Item number	1598678
Packing unit	20 pc
Minimum order quantity	1 pc
Sales key	AB31
Product key	ABRAFG
GTIN	4046356222020
Weight per piece (including packing)	76.95 g
Weight per piece (excluding packing)	70.054 g
Customs tariff number	85366990
Country of origin	DE

# RC-12S1N129006 - Coupler connector



1598678

<https://www.phoenixcontact.com/us/products/1598678>

## Technical data

### Product properties

Product type	Circular connector (cable-side)
--------------	---------------------------------

### Connector

#### Insulating body

Coding	N
Material (Insulating body)	PBT
Material (Contact)	CuZn
Material (Contact surface)	Ni/Au
Insertion/withdrawal cycles	50
Connection method	Solder cup
Contact switching type	Socket
Application	Signal
Number of positions	12
Direction of rotation	Standard
Connection profile	12
Number Contact (Contact group 1)	12
Diameter Contact (Contact group 1)	1 mm
Litz wire cross-section min. Contact (Contact group 1)	0.08 mm <sup>2</sup>
Litz wire cross-section max. Contact (Contact group 1)	1 mm <sup>2</sup>
Rated current Contact (Contact group 1)	8 A (for max. connection cross section)
Rated voltage Contact (Contact group 1)	48 V AC
	74 V DC
Rated surge voltage	1.5 kV
Overvoltage category	III
Degree of pollution	3

#### Housing

Type	Coupling housing
Thread type	M23
Design	straight
Type of locking	Screw locking mechanism
Pg screw connection	none
Material (Housing)	GD-Zn
Material (Housing surface)	Ni
Material (Rotating parts)	CuZn
Degree of protection (plugged in)	IP67

#### Seal

External cable diameter	7.5 mm ... 9.5 mm
-------------------------	-------------------

# RC-12S1N129006 - Coupler connector

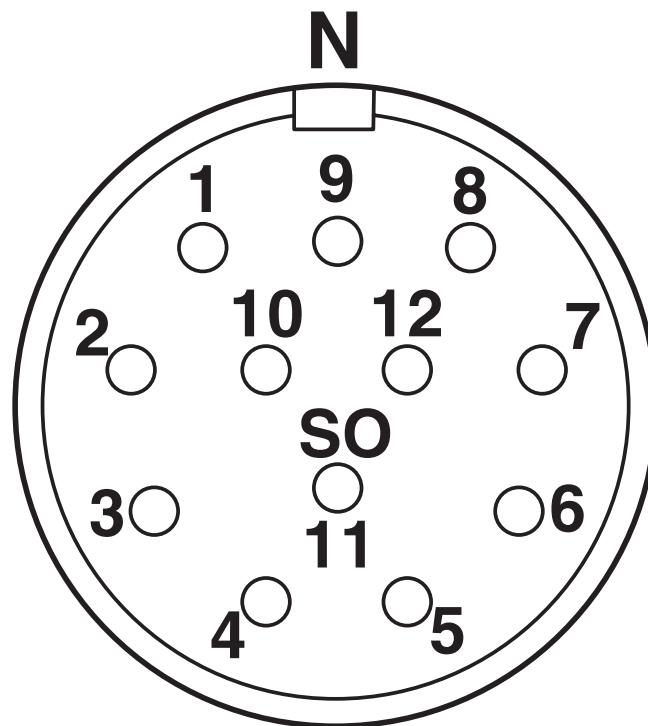
1598678

<https://www.phoenixcontact.com/us/products/1598678>



## Drawings

Schematic diagram



Connector pin assignment

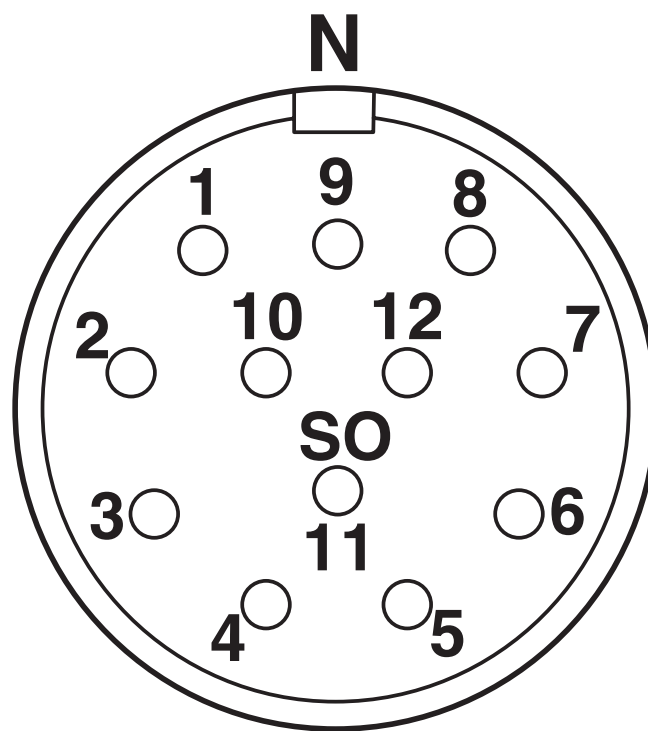
# RC-12S1N129006 - Coupler connector

1598678

<https://www.phoenixcontact.com/us/products/1598678>



Schematic diagram



Connector pin assignment

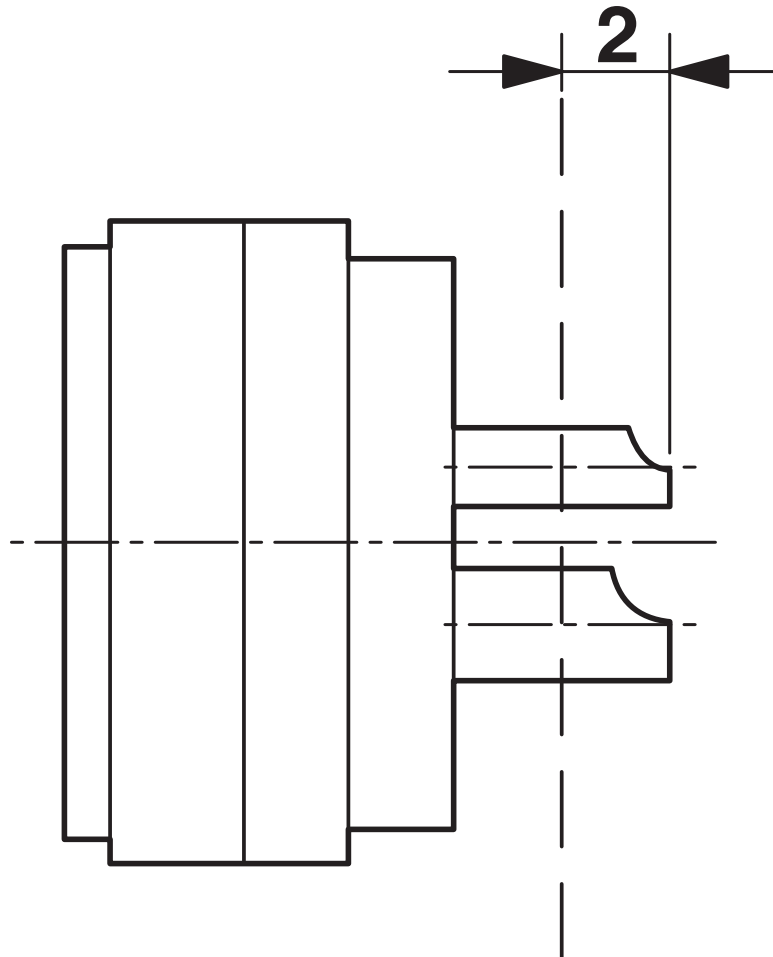
# RC-12S1N129006 - Coupler connector

1598678

<https://www.phoenixcontact.com/us/products/1598678>



Schematic diagram



Dimensional drawing

# RC-12S1N129006 - Coupler connector



1598678

<https://www.phoenixcontact.com/us/products/1598678>

## Classifications

### ECLASS

ECLASS-13.0	27440116
ECLASS-15.0	27440116

### ETIM

ETIM 9.0	EC002635
----------	----------

### UNSPSC

UNSPSC 21.0	39121400
-------------	----------

# RC-12S1N129006 - Coupler connector



1598678

<https://www.phoenixcontact.com/us/products/1598678>

## Environmental product compliance

### EU RoHS

Fulfills EU RoHS substance requirements	Yes
Exemption	6(c)

### China RoHS

Environment friendly use period (EFUP)	EFUP-50
	An article-related China RoHS declaration table can be found in the download area for the respective article under "Manufacturer declaration". For all articles with EFUP-E, no China RoHS declaration table issued and required.

### EU REACH SVHC

REACH candidate substance (CAS No.)	Lead(CAS: 7439-92-1)
SCIP	889b1557-d811-428c-96bd-185e8f86ad3a

Phoenix Contact 2025 © - all rights reserved

<https://www.phoenixcontact.com>

Phoenix Contact USA  
586 Fulling Mill Road  
Middletown, PA 17057, United States  
(+717) 944-1300  
[info@phoenixcon.com](mailto:info@phoenixcon.com)