

# EV-T2M3SO12-3P-R-B-SET - Infrastructure charging socket



1532118

<https://www.phoenixcontact.com/us/products/1532118>

Please be informed that the data shown in this PDF document is generated from our online catalog. Please find the complete data in the user documentation. Our general terms of use for downloads are valid.



CHARX connect modular, Type 2, Infrastructure charging socket, 32 A , 480 V AC, Basic, Set, without single-core wires, locking actuator: 12 V, 3-pos., square, Rear panel mounting, M5 thread, housing: black, with round protective cover, for charging electric vehicles (EV) with alternating current (AC), PHOENIX CONTACT logo, IEC 62196-2

## Product description

Infrastructure charging sockets with protective cover, for charging electric vehicles (EV) with alternating current (AC), compatible with Type 2 Infrastructure Plugs. For installation at charging stations for E-Mobility (EVSE)

## Your advantages

- Protected against overheating with precise temperature measurement
- Flexible mounting and easy maintenance with plug-in cables
- Available with your logo on request - for consistent branding of your charging station
- Waterproof and dirtproof due to fully molded contacts
- Developed and produced in accordance with the IATF 16949 automotive standard and ISO 9001
- Uniform, space-saving installation space

## Commercial data

Item number	1532118
Packing unit	10 pc
Minimum order quantity	10 pc
Sales key	EM01
Product key	XWBFLD
GTIN	4067923001411
Weight per piece (including packing)	22.22 g
Weight per piece (excluding packing)	686 g
Customs tariff number	85366990
Country of origin	DE

# EV-T2M3SO12-3P-R-B-SET - Infrastructure charging socket



1532118

<https://www.phoenixcontact.com/us/products/1532118>

## Set consists of

### EV-T2M3SO12-3P-B - Infrastructure charging socket

1164309

<https://www.phoenixcontact.com/us/products/1164309>



CHARX connect modular, Type 2, Infrastructure charging socket, 32 A , 480 V AC, Basic, without single-core wires, locking actuator: 12 V, 3-pos., square, Rear panel mounting, M5 thread, housing: black, for charging electric vehicles (EV) with alternating current (AC), PHOENIX CONTACT logo, IEC 62196-2

---

### EV-T2SOCR-B - Protective cover

1347421

<https://www.phoenixcontact.com/us/products/1347421>



CHARX connect modular, Type 2, Protective cover, Accessories, Basic, circular, Front mounting, M5 thread, with self-locking mechanism, for attaching to infrastructure charging sockets, Embossed PHOENIX CONTACT logo, IEC 62196-2

# EV-T2M3SO12-3P-R-B-SET - Infrastructure charging socket



1532118

<https://www.phoenixcontact.com/us/products/1532118>

## EV-T2M3SO-CAP - Protective cap

1202424

<https://www.phoenixcontact.com/us/products/1202424>



CHARX connect modular, Type 2, Protective cap, Accessories, circular, for strain relief and touch protection, IEC 62196-2

# EV-T2M3SO12-3P-R-B-SET - Infrastructure charging socket



1532118

<https://www.phoenixcontact.com/us/products/1532118>

## Technical data

### Product properties

Product type	Infrastructure charging socket
Product family	CHARX connect modular
Application	for charging electric vehicles (EV) with alternating current (AC) compatible with infrastructure charging plugs
Type	square circular circular
Design	with round protective cover
Charging standard	Type 2
Charging mode	Mode 3, Case B
Affixed logo	PHOENIX CONTACT logo
Customer variations	On request

### Electrical properties

#### Charging power and current (AC charging (3-phase))

Type of charging current	AC 3-phase
Charging current	max. 32 A AC (3-phase)
Charging power	max. 26.6 kW (3-phase)
Charging power rating	max. 22 kW (32 A, 3-phase)
Rated voltage	480 V

#### Pin assignment (Leistungskontakte)

Note on the connection method	Connection via spade connector, separable and reconnectable
Number	5 (L1, L2, L3, N, PE)
Rated voltage	480 V AC
Rated current	max. 32 A (The infrastructure charging socket is designed for both 1-phase and 3-phase charging with charging currents of up to 32 A.)

#### Pin assignment (Signalkontakte)

Note on the connection method	Connection via spade connector, separable and reconnectable
Type of signal transmission	Pulse width modulation
Number	2 (CP, PP)
Rated voltage	30 V AC
Rated current	2 A

#### Locking actuator

Locking actuator	12 V, 3-pos. Top center position
Possible power supply range at the motor	9 V ... 15.5 V
Operating current	< 1.8 A
Typical motor current for locking	250 mA Average run current

EV-T2M3SO12-3P-R-B-SET - Infrastructure charging  
socket



1532118

<https://www.phoenixcontact.com/us/products/1532118>

Reverse current of the motor	max. 2.4 A (Stall current)
Max. dwell time with reverse current	4 s
Recommended triggering time	200 ms ... 10 s (t <sub>on</sub> , typical)
Pause time after entry or exit path	8x (t <sub>on</sub> , typical)
Service life insertion cycles	> 10000 load cycles
Lock recognition	available
Lock setting	LOCK (Lever in horizontal position)
	UNLOCK (Lever in vertical position)
Mechanical emergency release	available
Ambient temperature (operation)	-30 °C ... 50 °C
Cable length	0.5 m
Cable structure	3 x 0.5 mm²

## Dimensions

### Bore dimensions

Width	60 mm
Height	60 mm

Infrastructure charging socket

Width	75 mm
Height	91.71 mm
Depth	87.95 mm (with protective cap for strain relief and touch protection attached at the back, included in delivery and already mounted)
	73.35 mm (without protective cap for strain relief and touch protection attached at the back, removal tool see accessories)

## Protective cover

Depth	22.9 mm
Diameter	109.2 mm

## Protective cap

Width	64 mm
Height	57 mm
Depth	24 mm
Dimensional drawing	
Max. wall thickness	<p>max. 50.00 mm (Rear panel mounting, normative maximum specification for infrastructure plug)</p> <p>max. 30.00 mm (Rear panel mounting, normative maximum specification for infrastructure charging plug when using protective cover 1347421)</p>

# EV-T2M3SO12-3P-R-B-SET - Infrastructure charging socket



1532118

<https://www.phoenixcontact.com/us/products/1532118>

## Material specifications

Color (Housing)	black (9005)
Color (Protective cover)	black (9005)
Material (Housing)	Plastic
Material (Protective cover)	Plastic
Material (Contact surface)	Silver

## Cable/line

Cable type	without single-core wires Single-core wires for AC and communication are available separately, see accessories
------------	---

### Single-core wires for locking actuator

Cable length	0.5 m
Cable structure	3 x 0.5 mm <sup>2</sup>
Single wire, material	PVC
External cable diameter	1.60 mm ±0.20 mm
Cable resistance	≤ 37.1 Ω/m

## Mechanical properties

Type of cover movement	Self-locking
------------------------	--------------

### Mechanical data

Insertion/withdrawal cycles	> 10000
Insertion force	< 100 N
Withdrawal force	< 100 N

## Environmental and real-life conditions

### Ambient conditions

Degree of protection (Infrastructure charging socket)	IP44 (plugged in)
Degree of protection (Protective cover)	IP54
Ambient temperature (operation)	-30 °C ... 50 °C
Ambient temperature (storage/transport)	-40 °C ... 80 °C
Altitude	5000 m (above sea level)

## Standards and regulations

### Standards

Standards/regulations	IEC 62196-2
-----------------------	-------------

## Mounting

Mounting type Infrastructure charging socket	Rear panel mounting (0 to 90 degree frontal inclination possible)
Mounting type Protective cover	Rear panel mounting
Mounting hole diameter	7.00 mm (ø)
Fixing screws	M5 thread

# EV-T2M3SO12-3P-R-B-SET - Infrastructure charging socket



1532118  
<https://www.phoenixcontact.com/us/products/1532118>

Screws included in the scope of delivery	none
--	------

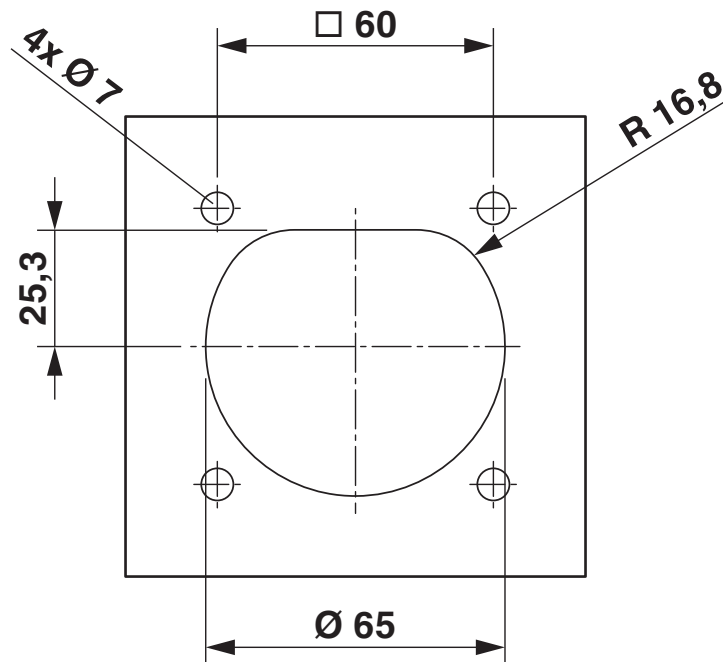
# EV-T2M3SO12-3P-R-B-SET - Infrastructure charging socket

1532118

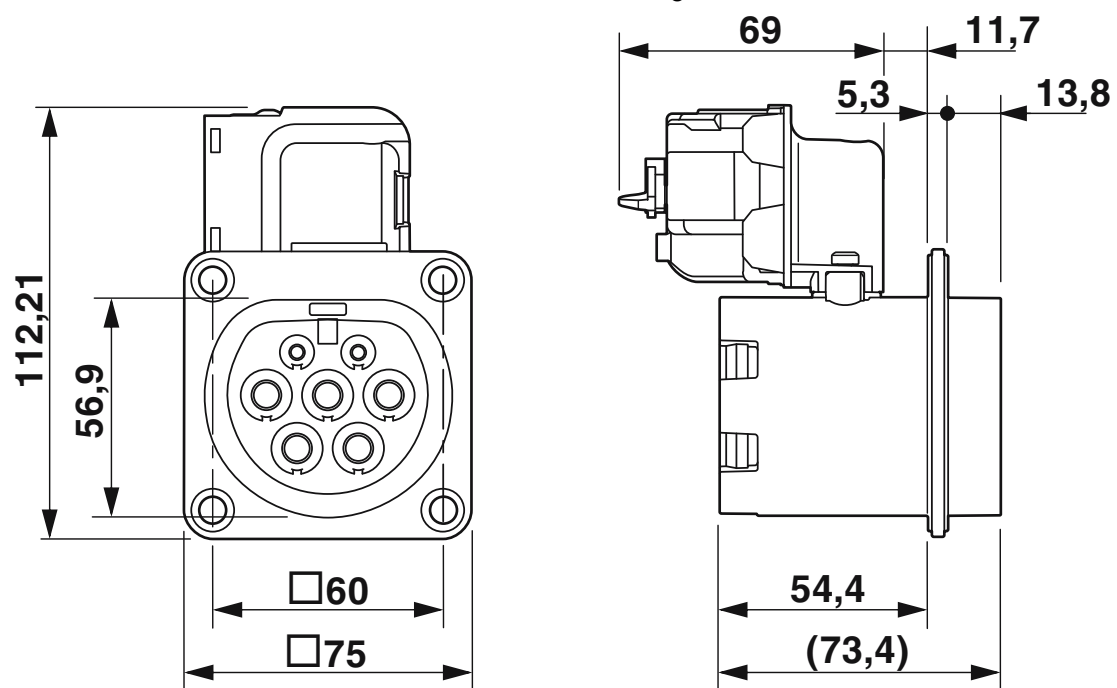
<https://www.phoenixcontact.com/us/products/1532118>

## Drawings

Dimensional drawing



Dimensional drawing

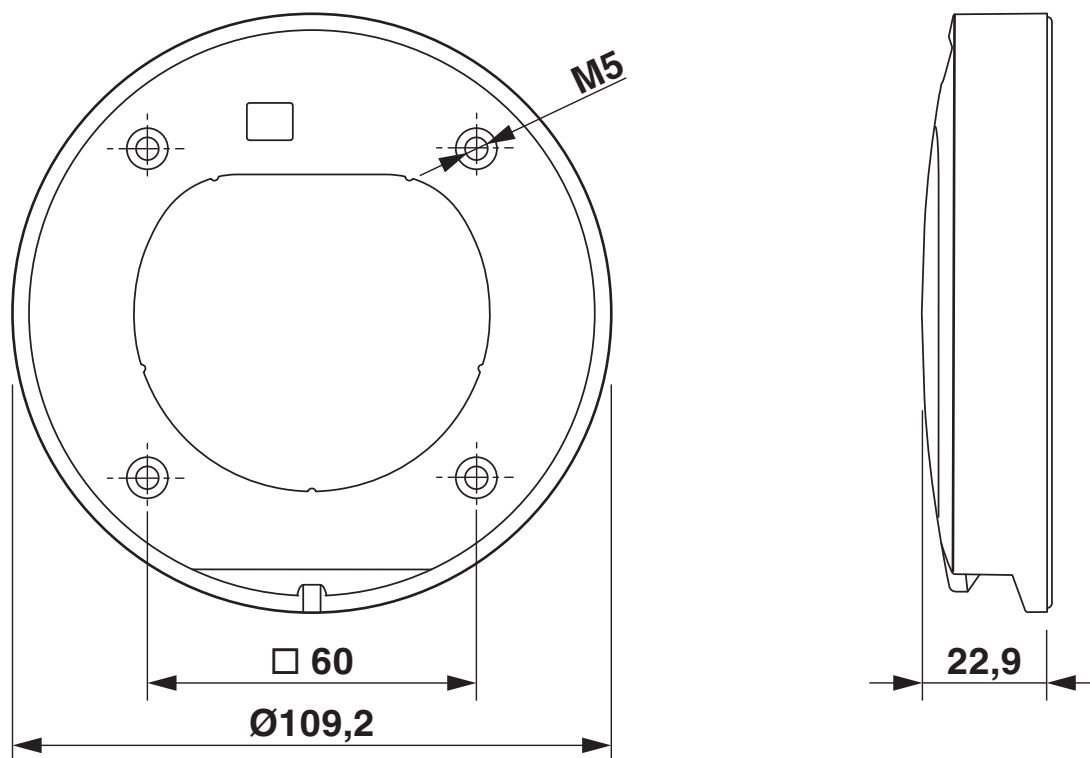


# EV-T2M3SO12-3P-R-B-SET - Infrastructure charging socket

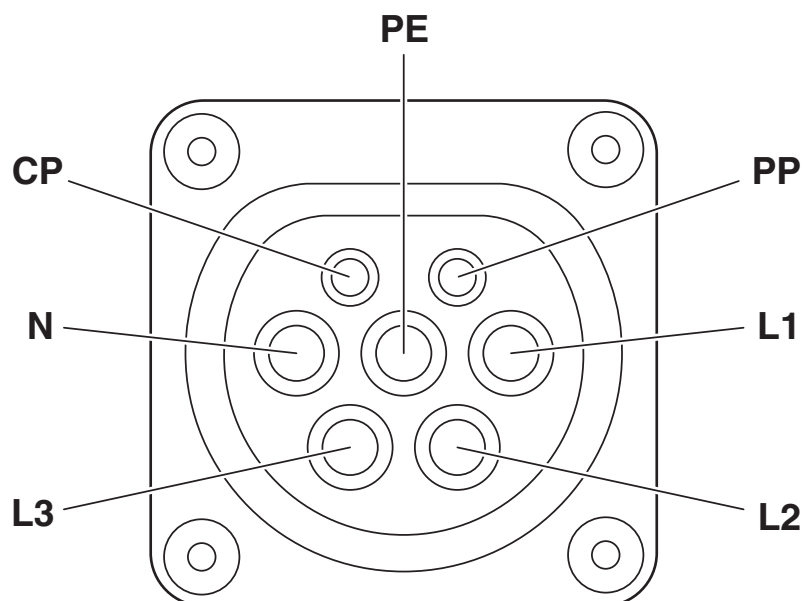
1532118

<https://www.phoenixcontact.com/us/products/1532118>

Dimensional drawing



Connection diagram



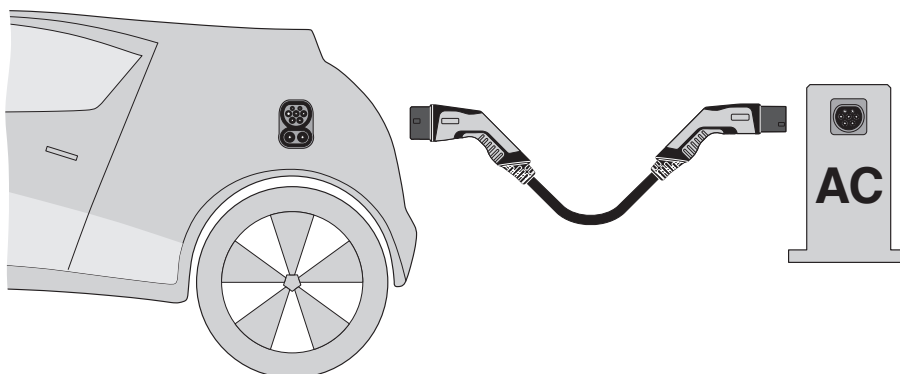
Pin assignment of infrastructure charging socket

# EV-T2M3SO12-3P-R-B-SET - Infrastructure charging socket

1532118

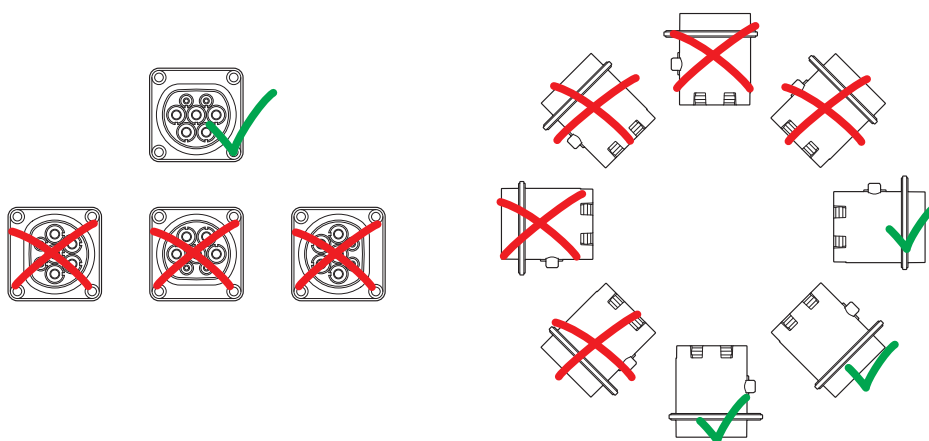
<https://www.phoenixcontact.com/us/products/1532118>

Schematic diagram



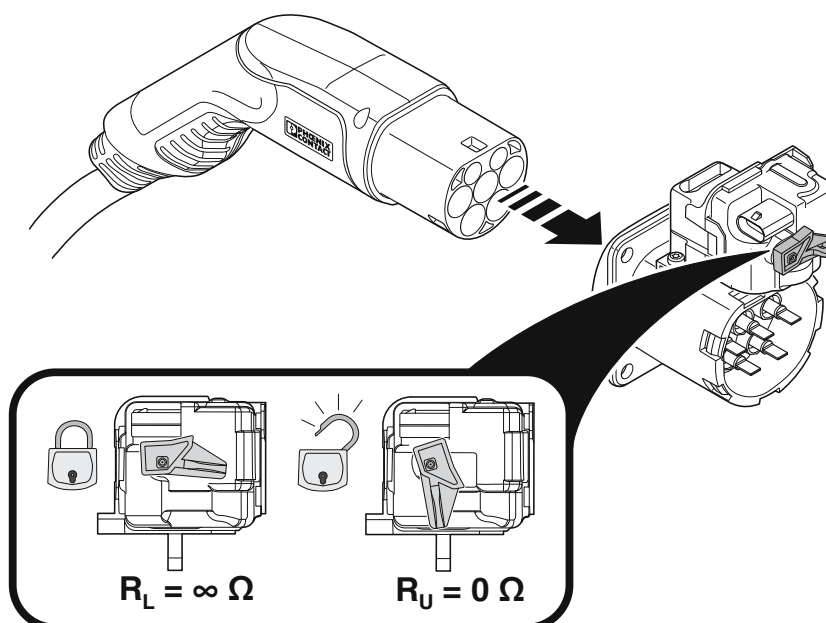
Operating instructions

Schematic diagram



Installation positions

Schematic diagram



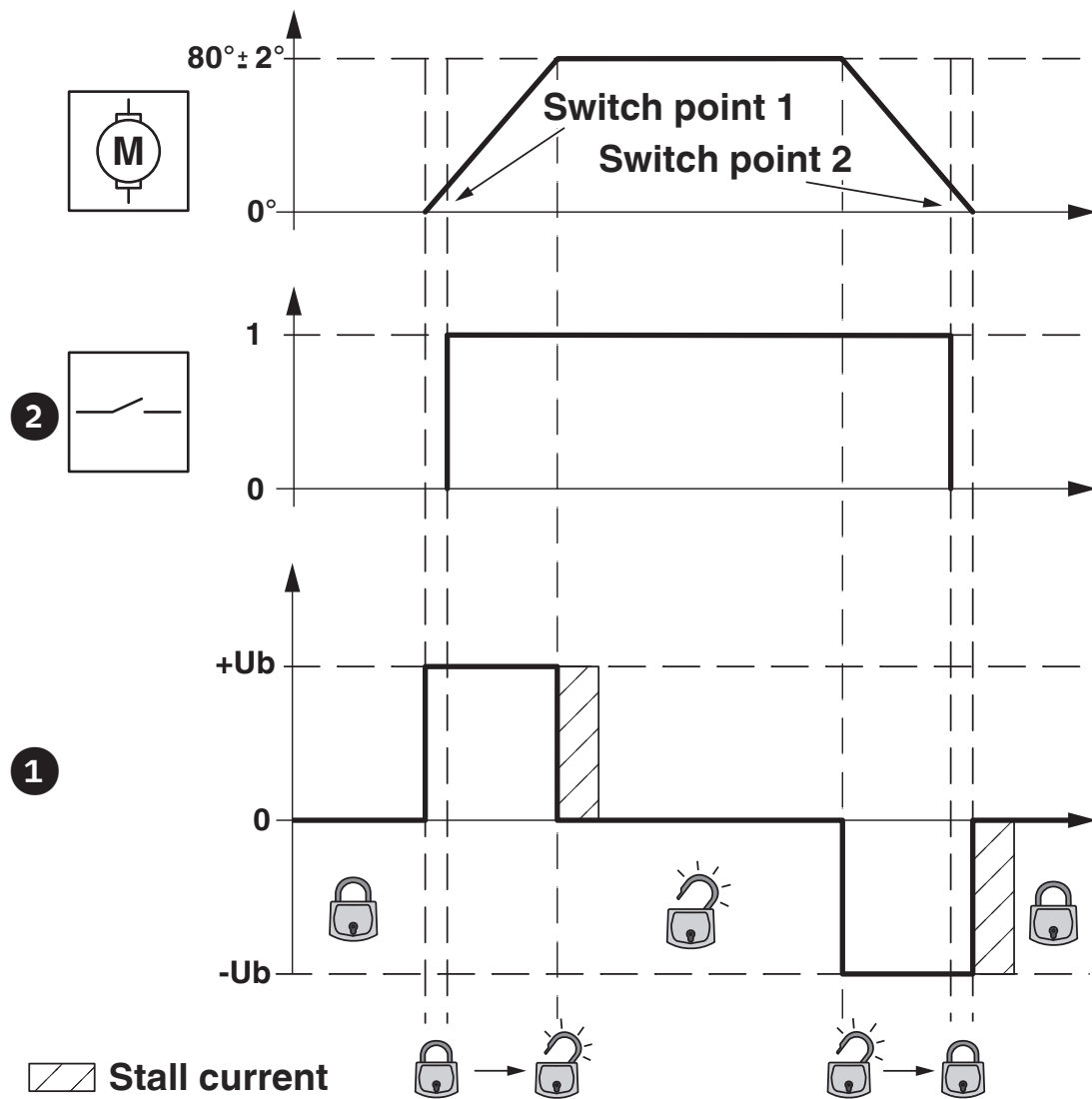
Position of the emergency unlocking lever on the locking actuator

# EV-T2M3SO12-3P-R-B-SET - Infrastructure charging socket

1532118

<https://www.phoenixcontact.com/us/products/1532118>

Diagram

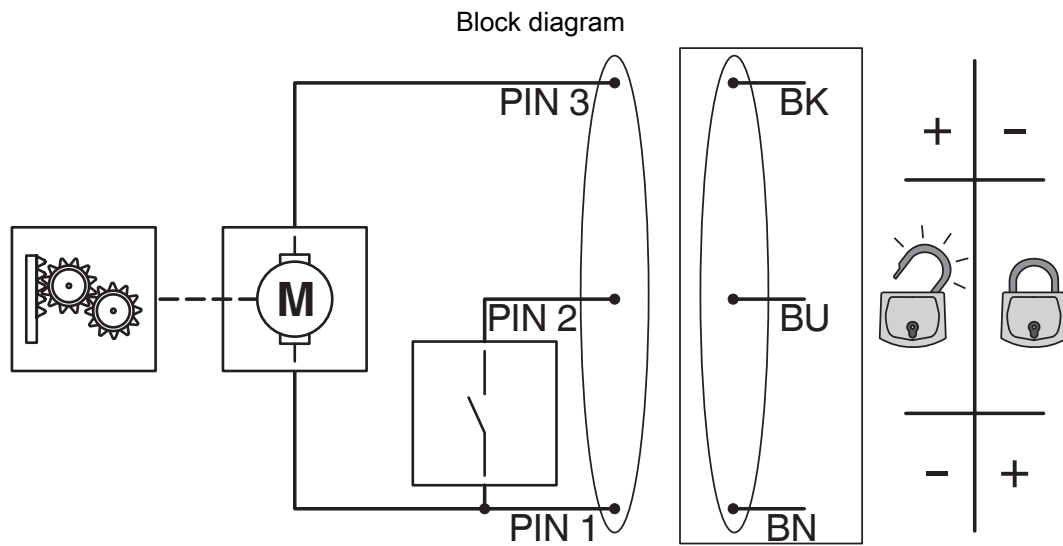


Locking states of the locking actuator

# EV-T2M3SO12-3P-R-B-SET - Infrastructure charging socket

1532118

<https://www.phoenixcontact.com/us/products/1532118>



Block diagram of the locking actuator

# EV-T2M3SO12-3P-R-B-SET - Infrastructure charging socket



1532118  
<https://www.phoenixcontact.com/us/products/1532118>

## Classifications

### ECLASS

ECLASS-13.0	27144792
ECLASS-15.0	27144792

### ETIM

ETIM 9.0	EC002884
----------	----------

### UNSPSC

UNSPSC 21.0	39121500
-------------	----------

1532118  
<https://www.phoenixcontact.com/us/products/1532118>

Environmental product compliance

EU RoHS	
Fulfills EU RoHS substance requirements	Not applicable, No electrical and electronic equipment (EEE), cannot be used in EEE
EU REACH SVHC	
REACH candidate substance (CAS No.)	Lead(CAS: 7439-92-1)
SCIP	d3a43c81-a24d-48ae-993d-0eee8f4e97ec

# EV-T2M3SO12-3P-R-B-SET - Infrastructure charging socket



1532118

<https://www.phoenixcontact.com/us/products/1532118>

## Accessories

### EV-LABEL-C-SO - Label

1315521

<https://www.phoenixcontact.com/us/products/1315521>

CHARX connect, Label, Accessories, For AC type 2 infrastructure charging socket and for AC type 2 infrastructure charging plug, DIN EN 17186



---

### EV-T2SOC-B - Protective cover

1164293

<https://www.phoenixcontact.com/us/products/1164293>

CHARX connect modular, Type 2, Protective cover, Accessories, Basic, square, Front mounting, M5 thread, with self-locking mechanism, for attaching to infrastructure charging sockets, Embossed PHOENIX CONTACT logo, IEC 62196-2



# EV-T2M3SO12-3P-R-B-SET - Infrastructure charging socket



1532118

<https://www.phoenixcontact.com/us/products/1532118>

## EV-T2M3SOW-1AC32A-0,3M6,0E - Cable set for infrastructure charging socket

1164343

<https://www.phoenixcontact.com/us/products/1164343>



CHARX connect modular, Type 2, Cable set for infrastructure charging socket, 32 A , 250 V AC, Accessories, Single wires, length: 0.3 m, Plug-in mounting, with slip-on sleeve at one end, only for connection to second-generation infrastructure charging sockets from Phoenix Contact, IEC 62196-2

---

## EV-T2M3SOW-3AC20A-0,3M2,5E - Cable set for infrastructure charging socket

1164355

<https://www.phoenixcontact.com/us/products/1164355>



CHARX connect modular, Type 2, Cable set for infrastructure charging socket, 20 A , 480 V AC, Accessories, Single wires, length: 0.3 m, Plug-in mounting, with slip-on sleeve at one end, only for connection to second-generation infrastructure charging sockets from Phoenix Contact, IEC 62196-2

# EV-T2M3SO12-3P-R-B-SET - Infrastructure charging socket



1532118

<https://www.phoenixcontact.com/us/products/1532118>

## EV-T2M3SOW-3AC32A-0,3M6,0E - Cable set for infrastructure charging socket

1164362

<https://www.phoenixcontact.com/us/products/1164362>



CHARX connect modular, Type 2, Cable set for infrastructure charging socket, 32 A , 480 V AC, Accessories, Single wires, length: 0.3 m, Plug-in mounting, with slip-on sleeve at one end, only for connection to second-generation infrastructure charging sockets from Phoenix Contact, IEC 62196-2

---

## EV-T2M3SOW-1AC32A-0,7M6,0E - Cable set for infrastructure charging socket

1164344

<https://www.phoenixcontact.com/us/products/1164344>



CHARX connect modular, Type 2, Cable set for infrastructure charging socket, 32 A , 250 V AC, Accessories, Single wires, length: 0.7 m, Plug-in mounting, with slip-on sleeve at one end, only for connection to second-generation infrastructure charging sockets from Phoenix Contact, IEC 62196-2

# EV-T2M3SO12-3P-R-B-SET - Infrastructure charging socket



1532118

<https://www.phoenixcontact.com/us/products/1532118>

## EV-T2M3SOW-3AC20A-0,7M2,5E - Cable set for infrastructure charging socket

1164361

<https://www.phoenixcontact.com/us/products/1164361>



CHARX connect modular, Type 2, Cable set for infrastructure charging socket, 20 A , 480 V AC, Accessories, Single wires, length: 0.7 m, Plug-in mounting, with slip-on sleeve at one end, only for connection to second-generation infrastructure charging sockets from Phoenix Contact, IEC 62196-2

---

## EV-T2M3SOW-3AC32A-0,7M6,0E - Cable set for infrastructure charging socket

1164365

<https://www.phoenixcontact.com/us/products/1164365>



CHARX connect modular, Type 2, Cable set for infrastructure charging socket, 32 A , 480 V AC, Accessories, Single wires, length: 0.7 m, Plug-in mounting, with slip-on sleeve at one end, only for connection to second-generation infrastructure charging sockets from Phoenix Contact, IEC 62196-2

# EV-T2M3SO12-3P-R-B-SET - Infrastructure charging socket



1532118

<https://www.phoenixcontact.com/us/products/1532118>

## EV-T2M3SL12-CONNECTOR - Connector

1132718

<https://www.phoenixcontact.com/us/products/1132718>



CHARX connect modular, Type 2, GB/T, Connector, Accessories, Single wires, length: 0.5 m, housing: black, with single-core wires, for controlling a 3-pos. locking actuator of an infrastructure charging socket, IEC 61851-1

---

## EV-T2M3SO-CAP - Protective cap

1202424

<https://www.phoenixcontact.com/us/products/1202424>



CHARX connect modular, Type 2, Protective cap, Accessories, circular, for strain relief and touch protection, IEC 62196-2

# EV-T2M3SO12-3P-R-B-SET - Infrastructure charging socket



1532118

<https://www.phoenixcontact.com/us/products/1532118>

## EV-T2M3SO-CAP-REMOVER - Removal tool

1286836

<https://www.phoenixcontact.com/us/products/1286836>



CHARX connect modular, Type 2, Removal tool, Accessories, for removing the protective cap for strain relief and touch protection, which is mounted on the back of the infrastructure charging sockets

---

## CHARX SEC-1000 - AC charging controller

1139034

<https://www.phoenixcontact.com/us/products/1139034>



CHARX control modular, AC charging controller, IEC 61851-1, operating mode: Stand-Alone, Client, interface: CHARX control modular system bus, Connectable peripheral devices: Energy meter, RFID, DC residual current detection, DIN rail mounting

# EV-T2M3SO12-3P-R-B-SET - Infrastructure charging socket



1532118

<https://www.phoenixcontact.com/us/products/1532118>

## CHARX SEC-3000 - AC charging controller

1139022

<https://www.phoenixcontact.com/us/products/1139022>



CHARX control modular, AC charging controller, with Embedded Linux system, IEC 61851-1, operating mode: Stand-Alone, Client, Server, interface: Ethernet (2 x), CHARX control modular system bus, MICRO-USB type C, communication protocol: OCPP 1.6J, Modbus/TCP, MQTT, Connectable peripheral devices: Energy meter, RFID, DC residual current detection, DIN rail mounting

---

## CHARX SEC-3050 - AC charging controller

1139018

<https://www.phoenixcontact.com/us/products/1139018>



CHARX control modular, AC charging controller, with Embedded Linux system, IEC 61851-1, ISO 15118, operating mode: Stand-Alone, Client, Server, interface: Ethernet (2x), CHARX control modular system bus, MICRO-USB type C, communication protocol: OCPP 1.6J, Modbus/TCP, MQTT, Connectable peripheral devices: Energy meter, RFID, DC residual current detection, DIN rail mounting

# EV-T2M3SO12-3P-R-B-SET - Infrastructure charging socket



1532118

<https://www.phoenixcontact.com/us/products/1532118>

## CHARX SEC-3100 - AC charging controller

1139012

<https://www.phoenixcontact.com/us/products/1139012>



CHARX control modular, AC charging controller, with Embedded Linux system, IEC 61851-1, operating mode: Stand-Alone, Client, Server, interface: Ethernet (2 x), Cellular communication (4G/2G), CHARX control modular system bus, MICRO-USB type C, communication protocol: OCPP 1.6J, Modbus/TCP, MQTT, Connectable peripheral devices: Energy meter, RFID, DC residual current detection, DIN rail mounting

---

## CHARX SEC-3150 - AC charging controller

1138965

<https://www.phoenixcontact.com/us/products/1138965>



CHARX control modular, AC charging controller, with Embedded Linux system, IEC 61851-1, ISO 15118, operating mode: Stand-Alone, Client, Server, interface: Ethernet (2x), Cellular communication (4G/2G), CHARX control modular system bus, MICRO-USB type C, communication protocol: OCPP 1.6J, Modbus/TCP, MQTT, Connectable peripheral devices: Energy meter, RFID, DC residual current detection, DIN rail mounting

# EV-T2M3SO12-3P-R-B-SET - Infrastructure charging socket



1532118

<https://www.phoenixcontact.com/us/products/1532118>

## EM-CP-PP-ETH - AC charging controller

2902802

<https://www.phoenixcontact.com/us/products/2902802>



EV charge control is used to charge electrical vehicles on the 3-phase AC mains power supply according to IEC 61851-1 Mode 3. All necessary control functions are integrated. Additional functions are available for various charging applications.

---

## VAL-EV-T1/T2 264/12.5/3+1 - Lightning/surge arrester type 1/2

1180149

<https://www.phoenixcontact.com/us/products/1180149>



CHARX protect advanced: Plug-in lightning surge/surge protective device, in accordance with Type 1/2 / Class I/II, for 3-phase power supply networks with separate N and PE (5-conductor system: L1, L2, L3, N, PE). Specifically designed for use in e-mobility.

# EV-T2M3SO12-3P-R-B-SET - Infrastructure charging socket



1532118

<https://www.phoenixcontact.com/us/products/1532118>

## VAL-EV-T1/T2 264/12.5/3+1-R - Lightning/surge arrester type 1/2

1180150

<https://www.phoenixcontact.com/us/products/1180150>



CHARX protect advanced: Plug-in lightning surge/surge protective device, in accordance with Type 1/2 / Class I/II, for 3-phase power supply networks with separate N and PE (5-conductor system: L1, L2, L3, N, PE), with remote indication contact. Specifically designed for use in e-mobility.

---

## VAL-EV-T2 280/3+1 - Type 2 surge arrester

1180144

<https://www.phoenixcontact.com/us/products/1180144>



CHARX protect basic: Plug-in surge protective device, in accordance with Type 2/Class II, for 3-phase power supply networks with separate N and PE (5-conductor system: L1, L2, L3, N, PE). Specifically designed for use in e-mobility.

# EV-T2M3SO12-3P-R-B-SET - Infrastructure charging socket



1532118

<https://www.phoenixcontact.com/us/products/1532118>

## VAL-EV-T2 280/3+1-R - Type 2 surge arrester

1180145

<https://www.phoenixcontact.com/us/products/1180145>



CHARX protect basic: Plug-in surge protective device, in accordance with Type 2/Class II, for 3-phase power supply networks with separate N and PE (5-conductor system: L1, L2, L3, N, PE), with remote indication contact. Specifically designed for use in e-mobility.

---

Phoenix Contact 2025 © - all rights reserved

<https://www.phoenixcontact.com>

Phoenix Contact USA  
586 Fulling Mill Road  
Middletown, PA 17057, United States  
(+717) 944-1300  
[info@phoenixcon.com](mailto:info@phoenixcon.com)