

EV-GBM3S-1AC32A-0,7M6,0E00 - Infrastructure charging socket



1408169

<https://www.phoenixcontact.com/us/products/1408169>

Please be informed that the data shown in this PDF document is generated from our online catalog. Please find the complete data in the user documentation. Our general terms of use for downloads are valid.



CHARX connect basic, GB/T, Infrastructure charging socket, 32 A , 250 V AC, Single wires, length: 0.7 m, square, Front and rear mounting, housing: black, for charging electric vehicles with alternating current (AC), GB/T 20234.2-2015, NOTE This product version does not include a locking actuator.

Product description

Infrastructure charging socket for charging electric vehicles (EV) with alternating current (AC), compatible with GB/T Infrastructure Plugs, for installation at charging stations for E-Mobility (EVSE)

Your advantages

- Complete product range
- Uniform, space-saving installation space
- Available with your logo on request - for consistent branding of your charging station
- Integrated interlock during charging
- Manual emergency release of the locking actuator
- Developed and produced in accordance with the IATF 16949 automotive standard and ISO 9001

Commercial data

Item number	1408169
Packing unit	1 pc
Minimum order quantity	1 pc
Product key	XWBFBA
GTIN	4046356856010
Weight per piece (including packing)	0.59 g
Weight per piece (excluding packing)	400 g
Country of origin	CN

EV-GBM3S-1AC32A-0,7M6,0E00 - Infrastructure charging socket



1408169

<https://www.phoenixcontact.com/us/products/1408169>

Technical data

Notes

General	NOTE This product version does not include a locking actuator.
General	Make sure that the Infrastructure Plug is locked into the Infrastructure Socket Outlet during the charging process according to IEC 61851-1. We recommend using our locking actuators (1624129, 1622317). If another type of locking is selected, we recommend sealing the mounting surface (1621465), see also accessories.

Product properties

Product type	Infrastructure charging socket
Product family	CHARX connect basic
Application	for charging electric vehicles with alternating current (AC)
Type	square
Charging standard	GB/T
Charging mode	Mode 3, Case B
Customer variations	On request

Electrical properties

Note on the connection method	Crimp connection, cannot be disconnected
-------------------------------	------------------------------------------

Charging power and current (AC charging (1-phase))

Type of charging current	AC single-phase
Charging current	32 A AC (1-phase)
Charging power	8 kW (1-phase)
Charging power rating	7.4 kW
Rated voltage	250 V

Pin assignment (Leistungskontakte)

Number	3 (L1, N, PE)
Rated voltage	250 V AC
Rated current	32 A

Pin assignment (Signalkontakte)

Type of signal transmission	Pulse width modulation
Number	2 (CP, CC)
Rated voltage	30 V AC
Rated current	2 A

Locking actuator

Locking actuator	without locking actuator
------------------	--------------------------

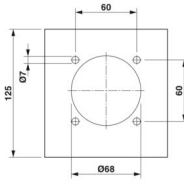
Dimensions

EV-GBM3S-1AC32A-0,7M6,0E00 - Infrastructure charging socket



1408169

<https://www.phoenixcontact.com/us/products/1408169>

Dimensional drawing	
Max. wall thickness	< 51.80 mm (Front mounting) > 57.00 mm (Rear panel mounting)
Bore dimensions	60 mm x 60 mm
Installation dimensions	
Maximum required installation depth	< 5.00 mm (Rear panel mounting) < 10.00 mm (Front mounting)

Material specifications

Color (Housing)	black (9005)
Material (Housing)	Plastic
Material (Contact surface)	Silver
Flammability rating according to UL 94	V0 ()

Cable/line

Cable length	0.7 m
Cable type	Single wires
Cable structure	3 x 6.0 mm ² + 2 x 0.5 mm ²
Single wire, cross section	6.00 mm ²

Single-core wires for AC

Cable length	0.7 m
--------------	-------

Mechanical properties

Mechanical data

Insertion/withdrawal cycles	> 10000
Insertion force	< 100 N
Withdrawal force	< 100 N

Environmental and real-life conditions

Ambient conditions

Degree of protection (Infrastructure charging socket)	IP55 (plugged in)
Ambient temperature (operation)	-30 °C ... 50 °C
Ambient temperature (storage/transport)	-40 °C ... 80 °C
Altitude	5000 m (above sea level)

Standards and regulations

EV-GBM3S-1AC32A-0,7M6,0E00 - Infrastructure charging socket



1408169
<https://www.phoenixcontact.com/us/products/1408169>

Standards

Standards/regulations	GB/T 20234.2-2015
-----------------------	-------------------

Mounting

Mounting type Infrastructure charging socket	Front and rear mounting (0 to 90 degree frontal inclination possible)
Mounting type Protective cover	rear (available separately)
Mounting hole diameter	7.00 mm (ø)

EV-GBM3S-1AC32A-0,7M6,0E00 - Infrastructure charging socket

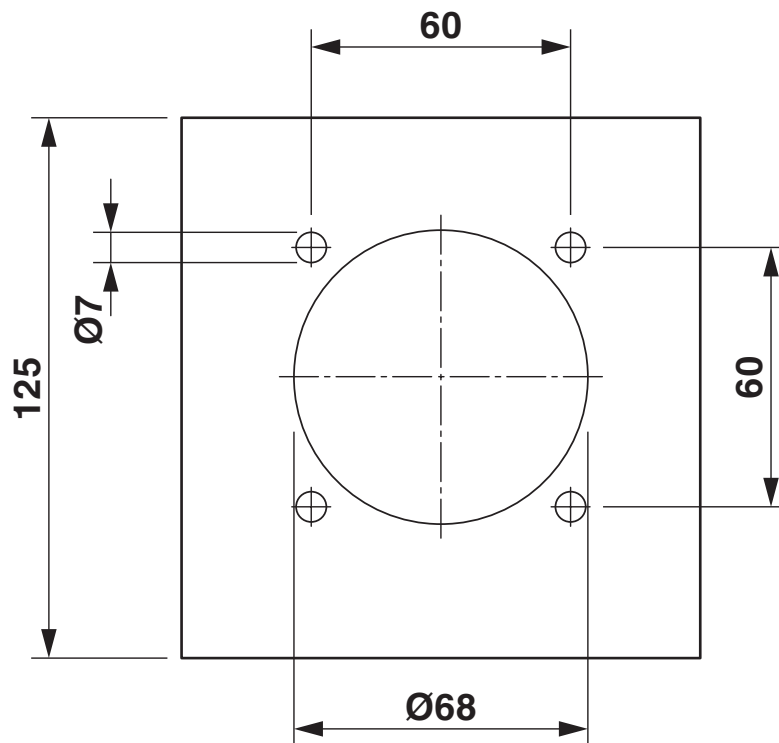


1408169

<https://www.phoenixcontact.com/us/products/1408169>

Drawings

Dimensional drawing



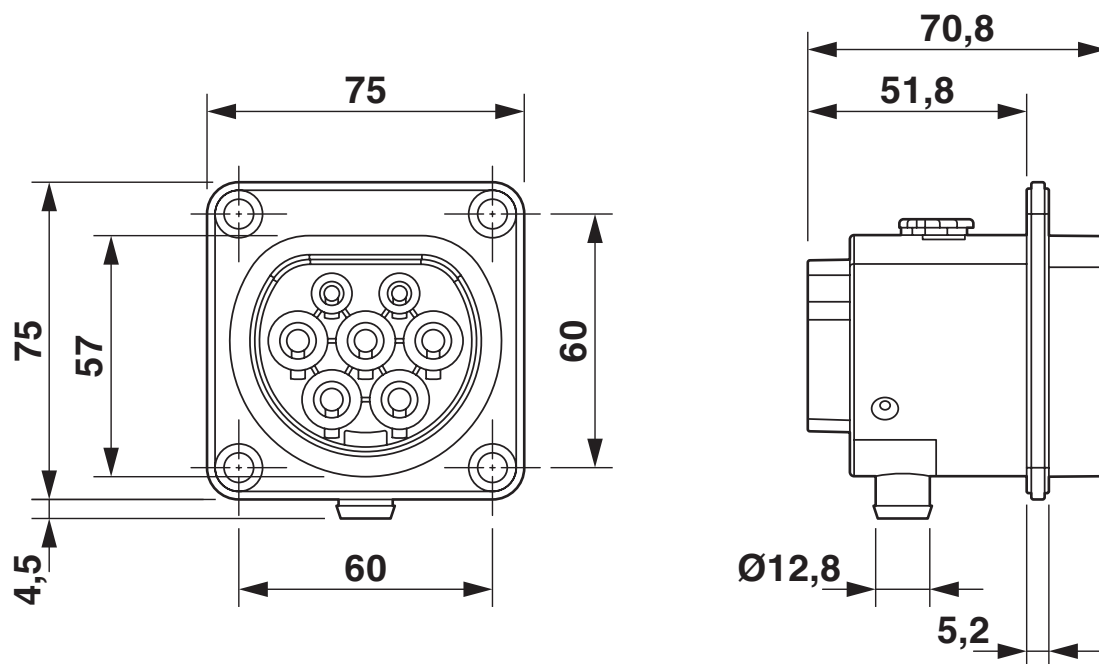
Hole image

EV-GBM3S-1AC32A-0,7M6,0E00 - Infrastructure charging socket

1408169

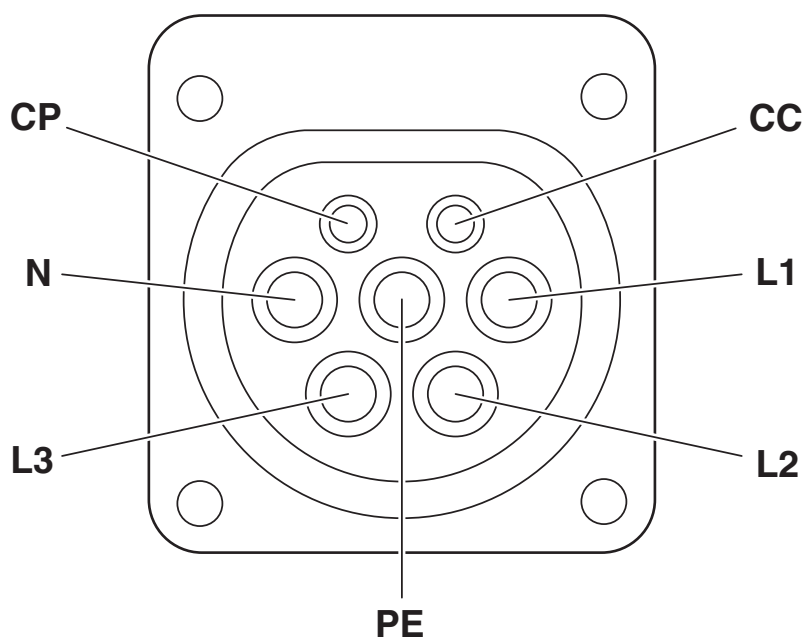
<https://www.phoenixcontact.com/us/products/1408169>

Dimensional drawing



Dimensional drawing

Connection diagram



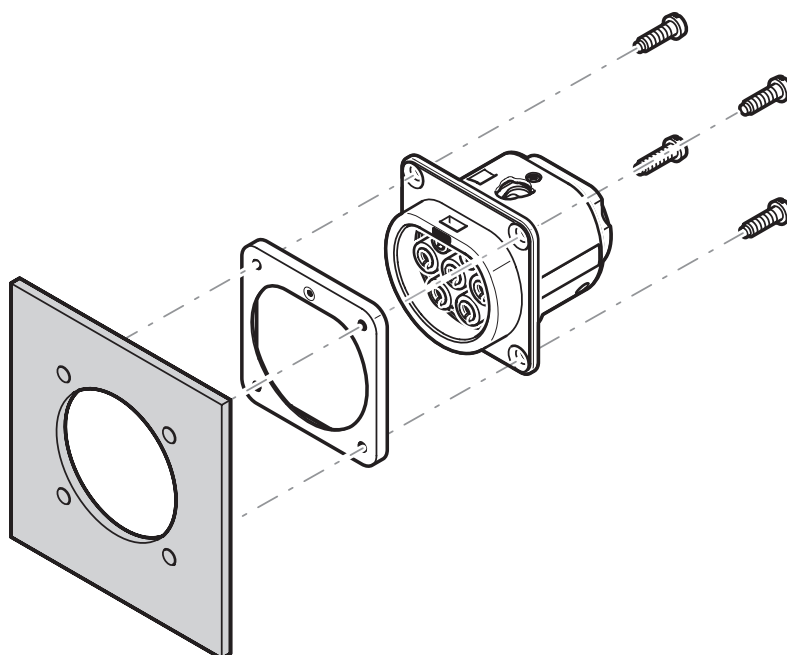
Pin assignment of infrastructure charging socket

EV-GBM3S-1AC32A-0,7M6,0E00 - Infrastructure charging socket

1408169

<https://www.phoenixcontact.com/us/products/1408169>

Schematic diagram



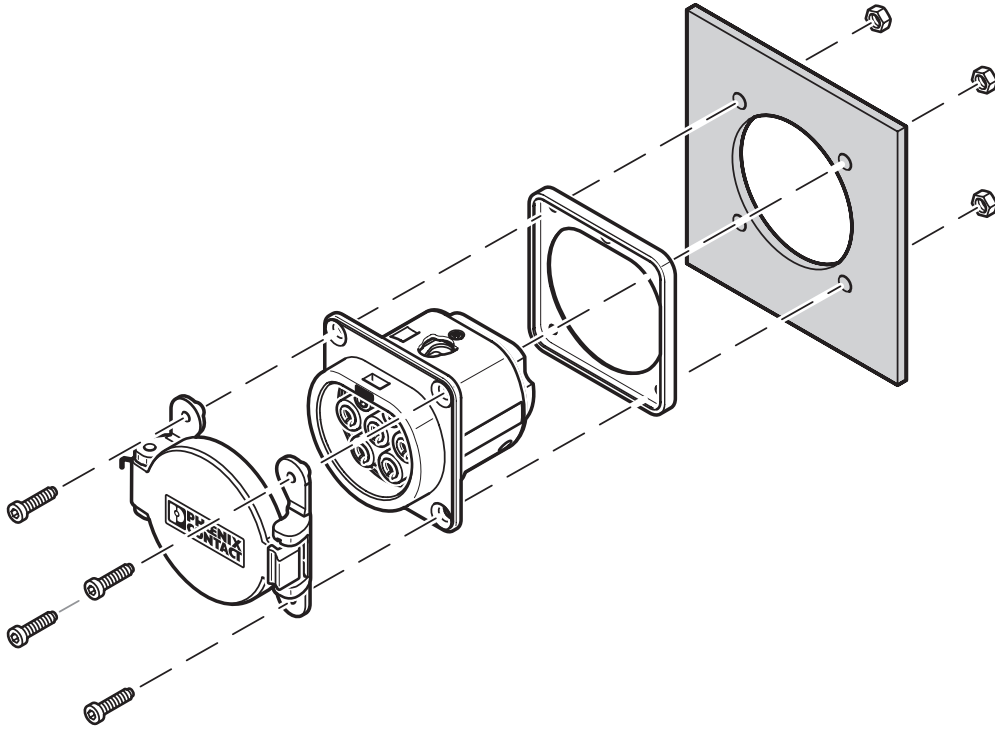
Rear mounting

EV-GBM3S-1AC32A-0,7M6,0E00 - Infrastructure charging socket

1408169

<https://www.phoenixcontact.com/us/products/1408169>

Schematic diagram



Front mounting with rear protective cover screw connection

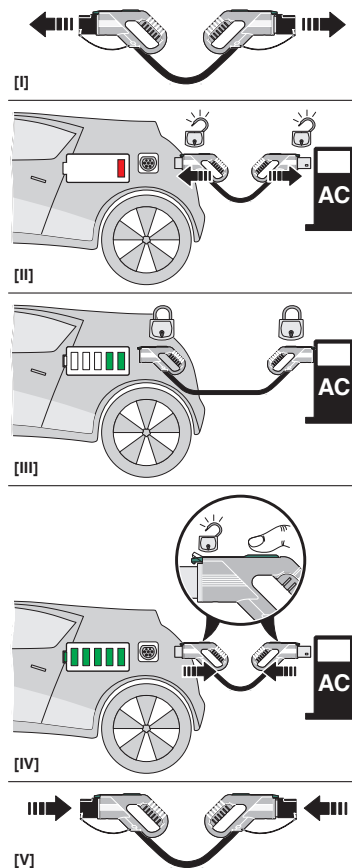
The screw connection for a protective cover from the accessories range (EV-GBSC...) only supports rear mounting.

EV-GBM3S-1AC32A-0,7M6,0E00 - Infrastructure charging socket

1408169

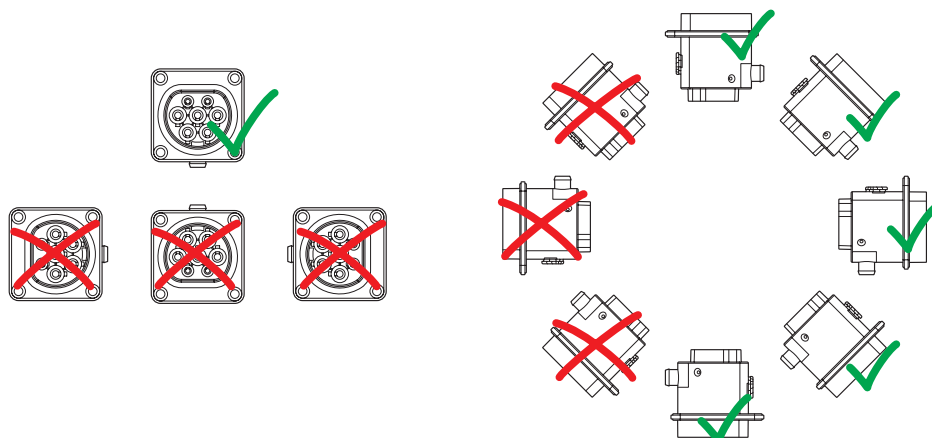
<https://www.phoenixcontact.com/us/products/1408169>

Schematic diagram



Operating instructions

Schematic diagram



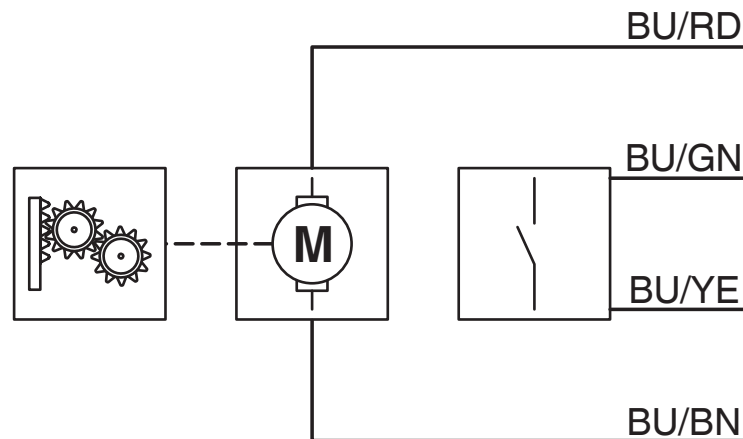
Installation positions

EV-GBM3S-1AC32A-0,7M6,0E00 - Infrastructure charging socket

1408169

<https://www.phoenixcontact.com/us/products/1408169>

Block diagram



Block diagram of the locking actuator

EV-GBM3S-1AC32A-0,7M6,0E00 - Infrastructure charging socket



1408169
<https://www.phoenixcontact.com/us/products/1408169>

Classifications

ECLASS

ECLASS-13.0	27144706
ECLASS-15.0	27144706

ETIM

ETIM 9.0	EC002898
----------	----------

UNSPSC

UNSPSC 21.0	39121800
-------------	----------

EV-GBM3S-1AC32A-0,7M6,0E00 - Infrastructure charging socket



1408169

<https://www.phoenixcontact.com/us/products/1408169>

Environmental product compliance

EU RoHS

Fulfills EU RoHS substance requirements	Yes
Exemption	6(c)

China RoHS

Environment friendly use period (EFUP)	EFUP-10
	An article-related China RoHS declaration table can be found in the download area for the respective article under "Manufacturer declaration". For all articles with EFUP-E, no China RoHS declaration table issued and required.

EU REACH SVHC

REACH candidate substance (CAS No.)	Lead(CAS: 7439-92-1)
-------------------------------------	----------------------

Phoenix Contact 2025 © - all rights reserved
<https://www.phoenixcontact.com>

Phoenix Contact USA
586 Fulling Mill Road
Middletown, PA 17057, United States
(+717) 944-1300
info@phoenixcon.com