

# FL SWITCH 1000-8POE - Industrial Ethernet Switch



1342622

<https://www.phoenixcontact.com/us/products/1342622>

Please be informed that the data shown in this PDF document is generated from our online catalog. Please find the complete data in the user documentation. Our general terms of use for downloads are valid.



PoE++ Ethernet switch conforms to IEEE 802.3af/at/bt, includes eight PoE RJ45 ports with 10/100 Mbps on all ports, automatic data transmission speed detection, autocrossing function, and QoS. 90 W per port with a 240 W power budget

## Your advantages

- RJ45 ports support a transmission speed of 10/100 Mbps
- QoS-prioritized (Quality of Service) messages
- Local diagnostic indicators with LEDs
- PROFINET PTCP filter for reliable communication on PROFINET networks
- Enhanced traffic prioritization for automation protocols
- Energy-efficient Ethernet in accord. with IEEE 802.3az
- PROFINET Conformance Class A for real-time data exchange
- Auto negotiation and autocrossing detection simplifies installation and setup
- Automatic detection of IEEE 802.3at, 802.3af, or 802.3bt powered devices
- POE status LED per port

## Commercial data

Item number	1342622
Packing unit	1 pc
Minimum order quantity	1 pc
Sales key	DN18
Product key	DNN115
GTIN	4063151652494
Weight per piece (including packing)	858 g
Weight per piece (excluding packing)	736 g
Customs tariff number	85176200
Country of origin	TW

# FL SWITCH 1000-8POE - Industrial Ethernet Switch



1342622

<https://www.phoenixcontact.com/us/products/1342622>

## Technical data

### Dimensions

Width	65 mm
Height	141 mm
Depth	107 mm

### Notes

Notes on operation	Mode A PoE
Note on application	
Note on application	Only for industrial use

### Material specifications

Housing material	Polycarbonate fiber reinforced
	Aluminum / steel sheet DC01

### Mounting

Mounting type	DIN rail mounting
---------------	-------------------

### Interfaces

#### Ethernet (RJ45)

Number of interfaces	8
Connection method	RJ45
Note on the connection method	Auto negotiation and autocrossing
Transmission speed	10/100 Mbps (full duplex)
Transmission physics	Ethernet in RJ45 twisted pair
Transmission length	100 m (per segment)
Signal LEDs	Data receive, link status, PoE
No. of channels	8 (RJ45 ports)
Input buffer	1.5 Mbits
Output buffer	1.5 Mbits

#### Ethernet (PoE)

Connection method	RJ45
Transmission speed	10/100 Mbps
Transmission physics	Ethernet RJ45
Transmission length	100 m (Between transmitter / receiver)
Signal LEDs	LNK/ACT, POE
No. of channels	8 (RJ45 PoE ports)

### Product properties

Product type	Switch
Product family	Unmanaged PoE Switch 1000

# FL SWITCH 1000-8POE - Industrial Ethernet Switch



1342622

<https://www.phoenixcontact.com/us/products/1342622>

Type	Stand-alone
MTTF	44.9 Years (MIL-HDBK-217F standard, temperature 25°C, operating cycle 100%)
	454.1 Years (SN 29500 standard, temperature 25°C, operating cycle 21%)
	432.2 Years (Telcordia standard, 25°C temperature, 21% operating cycle (5 days a week, 8 hours a day))
Basic functions	PSE, complies with IEEE 802.3af/at/bt
	Autonegotiation
	Store and Forward switching mode

## Switch functions

Basic functions	PSE, complies with IEEE 802.3af/at/bt
	Autonegotiation
	Store and Forward switching mode
MAC address table	4k
Status and diagnostic indicators	LEDs: U <sub>S</sub> , link and activity per port
Additional functions	100 BASE-TX (IEEE 802.3u)
	Quality of Service (QoS) prioritization (IEEE 802.1p)
	Energy-efficient Ethernet (IEEE 802.3az)
	10Base-T (IEEE 802.3)

## Security functions

Basic functions	PSE, complies with IEEE 802.3af/at/bt
	Autonegotiation
	Store and Forward switching mode

## Electrical properties

Maximum power dissipation for nominal condition	270 W (at 55V DC)
Transmission medium	Copper

## Supply

Supply voltage (DC)	48 V DC
Supply voltage range	46 V DC ... 57 V DC (>52 V DC for PoE+ recommended)
Power supply connection	Via COMBICON, max. conductor cross-section 2.5 mm <sup>2</sup>
Residual ripple	3.6 V <sub>PP</sub> (within the permitted voltage range)
Max. current consumption	5.5 A (at 46 V DC)
Typical current consumption	58 mA (at 55 V DC, no load)

## Connection data

### Connection technology

Connection name	Power supply
pluggable	yes

### Power supply

Connection method	Push-in spring connection
-------------------	---------------------------

Conductor cross-section, rigid	0.2 mm² ... 2.5 mm²
Conductor cross-section, flexible	0.2 mm² ... 2.5 mm²
Conductor cross-section AWG	24 ... 12
Conductor cross-section, flexible, with ferrule, with plastic sleeve	0.25 mm² ... 2.5 mm²
Conductor cross-section flexible, with ferrule without plastic sleeve	0.25 mm² ... 2.5 mm²
Stripping length	10 mm

## Environmental and real-life conditions

### Ambient conditions

Degree of protection	IP30
Ambient temperature (operation)	-10 °C ... 60 °C
Ambient temperature (storage/transport)	-40 °C ... 85 °C
Altitude	2000 m (maximum)
Permissible humidity (operation)	5 % ... 95 % (non-condensing)
Permissible humidity (storage/transport)	5 % ... 95 % (non-condensing)
Shock (operation)	30g (EN 60068-2-27)
Vibration (operation)	in acc. with IEC 60068-2-6: 5g, 150 Hz
Air pressure (operation)	79 kPa ... 108 kPa up to 2000 m above mean sea level (Without derating)
Air pressure (storage/transport)	79 kPa ... 108 kPa up to 2000 m above mean sea level (Without derating)

## Approvals

### Conformity/Approvals

Conformance	CE-compliant
-------------	--------------

## EMC data

Electromagnetic compatibility	Conformance with EMC Directive 2014/30/EU
Conformance with EMC directives	EN 61000-6-2 EN 61000-4-2 (ESD) Criterion B
	EN 61000-6-2 EN 61000-4-3 (electromagnetic fields) Criterion A
	EN 61000-6-2 EN 61000-4-4 (EFT burst) Criterion A
	EN 61000-6-2 EN 61000-4-5 (surge) Criterion B
	EN 61000-6-2 EN 61000-4-6 (line noise immunity) Criterion A
	EN 61000-6-2 EN 61000-4-8 (electromagnetic fields) Criterion A
Noise immunity	EN 61000-6-2 Class A
	EN 61000-6-2:2019

### Noise emission

Standards/regulations	EN_61000-6-4:2019
-----------------------	-------------------

## System properties

### Functionality

PSE, complies with IEEE 802.3af/at/bt
---------------------------------------

# FL SWITCH 1000-8POE - Industrial Ethernet Switch



1342622

<https://www.phoenixcontact.com/us/products/1342622>

Basic functions	Autonegotiation
	Store and Forward switching mode

## Signaling

Status display	LEDs: U <sub>S</sub> , link and activity per port
----------------	---

# FL SWITCH 1000-8POE - Industrial Ethernet Switch



1342622

<https://www.phoenixcontact.com/us/products/1342622>

## Approvals

🔗 To download certificates, visit the product detail page: <https://www.phoenixcontact.com/us/products/1342622>



**cULus Listed**

Approval ID: E238705

# FL SWITCH 1000-8POE - Industrial Ethernet Switch



1342622

<https://www.phoenixcontact.com/us/products/1342622>

## Classifications

### ECLASS

ECLASS-13.0	19170402
ECLASS-15.0	19170402

### ETIM

ETIM 9.0	EC000734
----------	----------

### UNSPSC

UNSPSC 21.0	43222600
-------------	----------

1342622

<https://www.phoenixcontact.com/us/products/1342622>

## Accessories

### QUINT4-PS/1AC/48DC/5 - Power supply

2904610

<https://www.phoenixcontact.com/us/products/2904610>



Primary-switched QUINT POWER power supply for DIN rail mounting with free choice of output characteristic curve and SFB (Selective Fuse Breaking) technology, input: 1-phase, output: 48 V DC / 5 A

---

### QUINT4-PS/1AC/48DC/10 - Power supply

2904611

<https://www.phoenixcontact.com/us/products/2904611>



Primary-switched QUINT POWER power supply for DIN rail mounting with free choice of output characteristic curve and SFB (Selective Fuse Breaking) technology, input: 1-phase, output: 48 V DC / 10 A



# FL SWITCH 1000-8POE - Industrial Ethernet Switch



1342622

<https://www.phoenixcontact.com/us/products/1342622>

## TRIO-PS-2G/1AC/48DC/5 - Power supply

2903159

<https://www.phoenixcontact.com/us/products/2903159>



Primary-switched TRIO power supply for DIN rail mounting, input: 1-phase, output: 48 V DC / 5 A, dynamic boost, tool-free fast connection technology for solid and stranded conductors with ferrule

---

## TRIO-PS-2G/1AC/48DC/10 - Power supply

2903160

<https://www.phoenixcontact.com/us/products/2903160>



Primary-switched TRIO POWER power supply with push-in connection for DIN rail mounting, input: single phase, output: 48 V DC/10 A

# FL SWITCH 1000-8POE - Industrial Ethernet Switch

1342622

<https://www.phoenixcontact.com/us/products/1342622>



## UNO2-PS/1AC/48DC/240W - Power supply

1110155

<https://www.phoenixcontact.com/us/products/1110155>



Primary-switched power supply unit, UNO POWER, Screw connection, DIN rail mounting, input: 1-phase, output: 48 V DC / 5 A, adjustable from 42 V DC ... 56 V DC

---

## FL PD 1001 T GT - Ethernet module

2891042

<https://www.phoenixcontact.com/us/products/2891042>



Factoryline Power over Ethernet splitter (PD) for separating power and data according to IEEE 802.3af and at, no configuration required, can be used with 10, 100, 1000 Mbps networks, 24 V DC output voltage

# FL SWITCH 1000-8POE - Industrial Ethernet Switch



1342622

<https://www.phoenixcontact.com/us/products/1342622>

## DT-LAN-CAT.6+ - Surge protection device

2881007

<https://www.phoenixcontact.com/us/products/2881007>



Surge protection in accordance with Class E<sub>A</sub> (CAT6<sub>A</sub>), for Gigabit Ethernet (up to 10 Gbps), token ring, FDDI/CDDI, ISDN, DS1. Suitable for Power over Ethernet (PoE++/4PPoE) "Mode A" and "Mode B". RJ45 intermediate plug with separate grounding cable and ground connection snap-on foot for NS 35 DIN rails. Products with similar requirements: DT-LAN-CAT.6A (2908726) und D-LAN-CAT.5-HC (2800763).

---

## FL CAT5 PATCH 0,5 - Patch cable

2832263

<https://www.phoenixcontact.com/us/products/2832263>



Patch cable, CAT5, assembled, 0.5 m

# FL SWITCH 1000-8POE - Industrial Ethernet Switch



1342622

<https://www.phoenixcontact.com/us/products/1342622>

## FL CAT5 PATCH 1,0 - Patch cable

2832276

<https://www.phoenixcontact.com/us/products/2832276>



Patch cable, CAT5, assembled, 1 m

---

## FL CAT5 PATCH 2,0 - Patch cable

2832289

<https://www.phoenixcontact.com/us/products/2832289>



Patch cable, CAT5, assembled, 2 m

# FL SWITCH 1000-8POE - Industrial Ethernet Switch



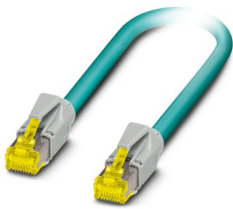
1342622

<https://www.phoenixcontact.com/us/products/1342622>

## NBC-R4AC-R4AC-IE8A/.../... - Patch cable

1411854

<https://www.phoenixcontact.com/us/products/1411854>



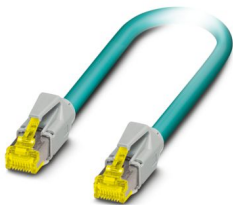
Patch cable, degree of protection: IP20, number of positions: 8, 10 Gbps, CAT6<sub>A</sub>, cable outlet: straight, Ethernet

---

## NBC-R4AC/10G-R4AC/10G-94F/2,0 - Patch cable

1408360

<https://www.phoenixcontact.com/us/products/1408360>



Patch cable, CAT6<sub>A</sub>, 4-pair, shielded, connection not crossed (line), assembled at both ends with RJ45/IP20 connectors, outer sheath material: PUR, length: 2.0 m

# FL SWITCH 1000-8POE - Industrial Ethernet Switch



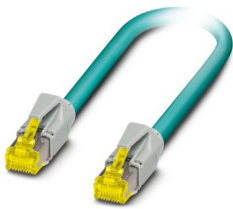
1342622

<https://www.phoenixcontact.com/us/products/1342622>

## NBC-R4AC/10G-R4AC/10G-94F/3,0 - Patch cable

1408365

<https://www.phoenixcontact.com/us/products/1408365>



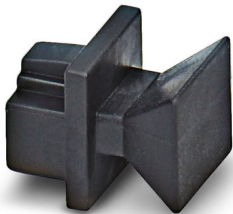
Patch cable, CAT6<sub>A</sub>, 4-pair, shielded, connection not crossed (line), assembled at both ends with RJ45/IP20 connectors, outer sheath material: PUR, length: 3.0 m

---

## FL RJ45 PROTECT CAP - Dust protection

2832991

<https://www.phoenixcontact.com/us/products/2832991>



Dust protection caps for RJ45 socket

# FL SWITCH 1000-8POE - Industrial Ethernet Switch



1342622

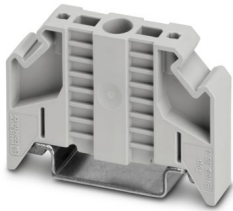
<https://www.phoenixcontact.com/us/products/1342622>

## E/NS 35 N - End bracket

0800886

<https://www.phoenixcontact.com/us/products/0800886>

End clamp, width: 9.5 mm, color: gray



---

Phoenix Contact 2025 © - all rights reserved

<https://www.phoenixcontact.com>

Phoenix Contact USA  
586 Fulling Mill Road  
Middletown, PA 17057, United States  
(+717) 944-1300  
[info@phoenixcon.com](mailto:info@phoenixcon.com)