

AXC F XT SPLC 3000 - PLC extension module



1160157

<https://www.phoenixcontact.com/us/products/1160157>

Please be informed that the data shown in this PDF document is generated from our online catalog. Please find the complete data in the user documentation. Our general terms of use for downloads are valid.



Alignable safety controller for 300 PROFI-safe devices connected to a modularly expandable PLCnext Control (not for AXC F 1152)

Your advantages

- Implementation of safety-related applications up to SIL 3/PL e
- PROFI-safe F-Host for up to 300 PROFI-safe F-devices in PROFINET or Axioline
- PROFI-safe F-Device for communication with a higher-level PROFI-safe F-Host SPLC
- 2x diverse SCPUs with Cortex A8/A9-based architecture
- Full integration into the PLCnext Technology ecosystem

Commercial data

Item number	1160157
Packing unit	1 pc
Minimum order quantity	1 pc
Sales key	DR09
Product key	DRADAG
GTIN	4063151168148
Weight per piece (including packing)	664 g
Weight per piece (excluding packing)	400 g
Customs tariff number	85371091
Country of origin	DE

AXC F XT SPLC 3000 - PLC extension module



1160157

<https://www.phoenixcontact.com/us/products/1160157>

Technical data

Dimensions

Width	100 mm
Height	127 mm
Depth	75 mm
Note on dimensions	The depth applies when a TH 35-7.5 DIN rail is used (in accordance with EN 60715).

External dimensions

Width / Height / Depth	100 mm / 127 mm / 75 mm (The depth applies when a TH 35-7.5 DIN rail is used (in accordance with EN 60715).)
------------------------	--

Notes

General	If the SPLC-3000 is operated with AXC F 2152, the AXC BS L 2 bus base module must be used.
---------	--

Note on application

Note on application	Only for industrial use
---------------------	-------------------------

System properties

Processor	Arm® Cortex®-A9 800 MHz (CPU1)
	Arm® Cortex®-A8 600 MHz (CPU2)

Function

Safety function	yes
-----------------	-----

System requirements

Engineering tool	PLCnext Engineer
------------------	------------------

Product properties

Product type	I/O component
Product family	PLCnext Control Extension
Type	modular

Insulation characteristics

Protection class	III (IEC 61140, EN 61140, VDE 0140-1)
------------------	---------------------------------------

Electrical properties

Maximum power dissipation for nominal condition	typ. 5.52 W
	typ. 5.52 W

Supply

Supply voltage	24 V DC
Supply voltage range	19.2 V DC ... 30 V DC (including all tolerances, including ripple)
Max. current consumption	350 mA
Typical current consumption	230 mA

AXC F XT SPLC 3000 - PLC extension module



1160157

<https://www.phoenixcontact.com/us/products/1160157>

Potentials: Supply of the logic voltage U_L

Supply voltage	24 V DC
Supply voltage range	19.2 V DC ... 30 V DC (including all tolerances, including ripple)
Current draw	max. 350 mA
	typ. 230 mA
Protective circuit	Reverse polarity protection; Polarity protection diode
	Transient protection; Suppressor diode

Connection data

Connection technology

Connection name	Axioline F connector
-----------------	----------------------

Conductor connection

Connection method	Push-in connection
Conductor cross-section rigid	0.2 mm ² ... 1.5 mm ²
Conductor cross-section flexible	0.2 mm ² ... 1.5 mm ²
Conductor cross-section AWG	24 ... 16
Stripping length	8 mm

Axioline F connector

Connection method	Push-in connection
Conductor cross-section, rigid	0.2 mm ² ... 1.5 mm ²
Conductor cross-section, flexible	0.2 mm ² ... 1.5 mm ²
Conductor cross-section AWG	24 ... 16
Stripping length	8 mm

Environmental and real-life conditions

Ambient conditions

Degree of protection	IP20
Ambient temperature (operation)	-25 °C ... 60 °C up to 2000 m above mean sea level
	-25 °C ... 55 °C up to 3000 m above mean sea level
	-25 °C ... 50 °C up to 4000 m above mean sea level
Ambient temperature (storage/transport)	-40 °C ... 85 °C
Permissible humidity (operation)	5 % ... 95 % (according to DIN EN 61131-2)
Permissible humidity (storage/transport)	5 % ... 95 % (according to DIN EN 61131-2)
Shock (operation)	30g (in accordance with EN 60068-2-27/IEC 60068-2-27)
Shock (storage/transport)	30g (in accordance with EN 60068-2-27/IEC 60068-2-27)
Vibration (operation)	5g (in accordance with EN 60068-2-6/IEC 60068-2-6)
Vibration (storage/transport)	5g (in accordance with EN 60068-2-6/IEC 60068-2-6)
Air pressure (operation)	70 kPa ... 106 kPa (up to 3000 m above sea level)
Air pressure (storage/transport)	58 kPa ... 106 kPa (up to 4500 m above mean sea level)
Resistance to gases that may endanger the functions, in acc. with DIN 40046-36, DIN 40046-37	Use of the device in these ambient conditions is prohibited.

AXC F XT SPLC 3000 - PLC extension module



1160157

<https://www.phoenixcontact.com/us/products/1160157>

Mounting

Mounting type	DIN rail mounting
---------------	-------------------

AXC F XT SPLC 3000 - PLC extension module



1160157

<https://www.phoenixcontact.com/us/products/1160157>

Approvals

🔗 To download certificates, visit the product detail page: <https://www.phoenixcontact.com/us/products/1160157>

PROFIsafe

Approval ID: Z20350

PROFIsafe

Approval ID: Z20351



Functional Safety

Approval ID: 01/205/5941.00/23

AXC F XT SPLC 3000 - PLC extension module



1160157

<https://www.phoenixcontact.com/us/products/1160157>

Classifications

ECLASS

ECLASS-13.0	27242207
ECLASS-15.0	27242207

ETIM

ETIM 9.0	EC000236
----------	----------

UNSPSC

UNSPSC 21.0	32151700
-------------	----------

Environmental product compliance

EU RoHS

Fulfills EU RoHS substance requirements	Yes
Exemption	6(c), 7(a), 7(c)-I

China RoHS

Environment friendly use period (EFUP)	EFUP-50
	An article-related China RoHS declaration table can be found in the download area for the respective article under "Manufacturer declaration". For all articles with EFUP-E, no China RoHS declaration table issued and required.

EU REACH SVHC

REACH candidate substance (CAS No.)	Lead(CAS: 7439-92-1)
SCIP	d54c93e7-5a29-41c4-9953-17334b17468c

AXC F XT SPLC 3000 - PLC extension module



1160157

<https://www.phoenixcontact.com/us/products/1160157>

Mandatory accessories

AXC F 2152 - Controller

2404267

<https://www.phoenixcontact.com/us/products/2404267>



Controller (SPS), PLCnext Control; Programming: High-level language and IEC 61131-3; Operating system: Yocto/Linux® (real-time); Programming tool: PLCnext Engineer, Eclipse®, Visual Studio®, MATLAB®/ Simulink®; IoT connection: PROFICLOUD and every cloud via cloud connectors; Development process certified in accordance with IEC 62443-4-1, Product certified in accordance with IEC 62443-4-2 (Certification conditions see user documentation); Processor: Arm® Cortex®-A9, 2x 800 MHz.

AXC F 3152 - Controller

1069208

<https://www.phoenixcontact.com/us/products/1069208>



Controller (SPS), PLCnext Control; Programming: High-level language and IEC 61131-3; Operating system: Yocto/Linux® (real-time); Programming tool: PLCnext Engineer, Eclipse®, Visual Studio®, MATLAB®/ Simulink®; IoT connection: PROFICLOUD and every cloud via cloud connectors; Development process certified in accordance with IEC 62443-4-1, Product certified in accordance with IEC 62443-4-2 (Certification conditions see user documentation); Processor: Intel® Atom® x5-E3930, 2x 1.3 GHz.

AXC F XT SPLC 3000 - PLC extension module



1160157

<https://www.phoenixcontact.com/us/products/1160157>

AXC BS L 2 - Bus connector

1064312

<https://www.phoenixcontact.com/us/products/1064312>



Bus base module for the left alignment of AXC F XT... type extension modules to AXC F 2152 type controllers (item no. 2404267).

Accessories

AXL F BK PN TPS - Bus coupler

2403869

<https://www.phoenixcontact.com/us/products/2403869>



Axioline F, Bus coupler, PROFINET, RJ45 jack, transmission speed in the local bus: 100 Mbps, degree of protection: IP20, including bus base module and Axioline F connector

AXC F XT SPLC 3000 - PLC extension module



1160157

<https://www.phoenixcontact.com/us/products/1160157>

AXL SE PSDI8/3 - Safety module

1079241

<https://www.phoenixcontact.com/us/products/1079241>



Axioline Smart Elements, Digital input module, Functional safety, PROFIsafe, only for connection to Phoenix Contact or Siemens controller, Safe digital inputs: 4 (2-channel assignment), 8 (1-channel assignment), 24 V DC, connection technology: 3-conductor, degree of protection: IP20

AXL SE PSDO4/2 2A - Safety module

1079231

<https://www.phoenixcontact.com/us/products/1079231>



Axioline Smart Elements, Digital output module, Functional safety, PROFIsafe, only for connection to Phoenix Contact or Siemens controller, Safe digital outputs: 2 (2-channel assignment), 4 (1-channel assignment), 24 V DC, 2 A, connection technology: 2-conductor, degree of protection: IP20

AXC F XT SPLC 3000 - PLC extension module

1160157

<https://www.phoenixcontact.com/us/products/1160157>



AXL SE SC-A - Cover

1088134

<https://www.phoenixcontact.com/us/products/1088134>



Axioline Smart Elements, Slot cover, Diagnostic function, degree of protection: IP20

AXL F BP SE4 - Module carrier

1088135

<https://www.phoenixcontact.com/us/products/1088135>



Axioline F, Backplane, 4 slots for Axioline Smart Elements, transmission speed in the local bus: 100 Mbps, degree of protection: IP20

AXC F XT SPLC 3000 - PLC extension module

1160157

<https://www.phoenixcontact.com/us/products/1160157>



AXL F PSDO8/3 1F - Safety module

2701560

<https://www.phoenixcontact.com/us/products/2701560>



Axioline F, Digital output module, Functional safety, PROFIsafe, only for connection to Phoenix Contact or Siemens controller, Digital outputs: 4 (for 2-channel assignment), 8 (for 1-channel assignment), 2 A, connection technology: 2-, 3-conductor, degree of protection: IP20

AXL F DI16/1 HS 1H - Digital module

2701722

<https://www.phoenixcontact.com/us/products/2701722>



Axioline F, Digital input module, Digital inputs: 16, 24 V DC, connection technology: 1-conductor, Input filter time < 5 µs, transmission speed in the local bus: 100 Mbps, degree of protection: IP20, including bus base module and Axioline F connectors

AXC F XT SPLC 3000 - PLC extension module



1160157

<https://www.phoenixcontact.com/us/products/1160157>

QUINT4-PS/1AC/24DC/20/+ - Power supply

2904617

<https://www.phoenixcontact.com/us/products/2904617>



Primary-switched QUINT POWER supply for DIN rail mounting, with selectable output characteristic curve and SFB Technology (selective fuse breaking), protective coating and integrated decoupling MOSFET, input: 1-phase, output: 24 V DC / 20 A

QUINT4-PS/1AC/24DC/10 - Power supply

2904601

<https://www.phoenixcontact.com/us/products/2904601>



Primary-switched QUINT POWER power supply with free choice of output characteristic curve, SFB (selective fuse breaking) technology, and NFC interface, input: 1-phase, output: 24 V DC/10 A

AXC F XT SPLC 3000 - PLC extension module

1160157

<https://www.phoenixcontact.com/us/products/1160157>



QUINT4-PS/1AC/24DC/5 - Power supply

2904600

<https://www.phoenixcontact.com/us/products/2904600>



Primary-switched QUINT POWER power supply with free choice of output characteristic curve, SFB (selective fuse breaking) technology, and NFC interface, input: 1-phase, output: 24 V DC/5 A

SD FLASH 8GB PLCNEXT MEMORY - Program/configuration memory

1061701

<https://www.phoenixcontact.com/us/products/1061701>



Program and configuration memory for storing the application programs and other files in the file system of the PLC, plug-in, 8 GB.

AXC F XT SPLC 3000 - PLC extension module

1160157

<https://www.phoenixcontact.com/us/products/1160157>



SD FLASH 2GB PLCNEXT MEMORY - Program/configuration memory

1043501

<https://www.phoenixcontact.com/us/products/1043501>

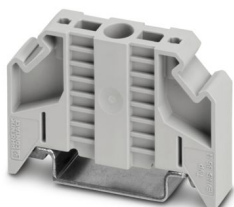


Program and configuration memory for storing the application programs and other files in the file system of the PLC, plug-in, 2 GB.

E/NS 35 N - End bracket

0800886

<https://www.phoenixcontact.com/us/products/0800886>



End clamp, width: 9.5 mm, color: gray

AXC F XT SPLC 3000 - PLC extension module



1160157

<https://www.phoenixcontact.com/us/products/1160157>

E/AL-NS 35 - End bracket

1201662

<https://www.phoenixcontact.com/us/products/1201662>



End clamp, for end support of UKH 50 to UKH 240, is pushed onto DIN rail NS 35 and fixed with 2 screws, width: 10 mm, color: aluminum

CLIPFIX 35 - End bracket

3022218

<https://www.phoenixcontact.com/us/products/3022218>



Quick mounting end clamp for NS 35/7,5 DIN rail or NS 35/15 DIN rail, with marking option, width: 9.5 mm, color: gray

AXC F XT SPLC 3000 - PLC extension module



1160157

<https://www.phoenixcontact.com/us/products/1160157>

CLIPFIX 35-5 - End bracket

3022276

<https://www.phoenixcontact.com/us/products/3022276>

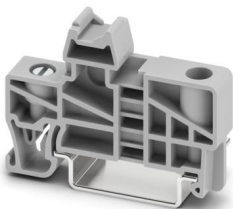


Quick mounting end clamp for NS 35/7,5 DIN rail or NS 35/15 DIN rail, with marking option, with parking option for FBS...5, FBS...6, KSS 5, KSS 6, width: 5.15 mm, color: gray

E/UK - End bracket

1201442

<https://www.phoenixcontact.com/us/products/1201442>



End bracket, material: PA, mounting type: NS 35/7,5, NS 35/15, color: gray

AXC F XT SPLC 3000 - PLC extension module



1160157

<https://www.phoenixcontact.com/us/products/1160157>

PLCNEXT ENGINEER - Programming software

1046008

<https://www.phoenixcontact.com/us/products/1046008>



Engineering software platform for Phoenix Contact automation controllers. PLCnext Engineer is IEC 61131-3-compliant and is available free of charge under Downloads. Its functionality can be extended using paid add-ins. To do this, open the license configurator via the "Configure" button.

AXC BS E XT SPARE PART - Replacement part

1670423

<https://www.phoenixcontact.com/us/products/1670423>



Replacement bus base for AXC F XT SPLC 3000.

Phoenix Contact 2025 © - all rights reserved
<https://www.phoenixcontact.com>

Phoenix Contact USA
586 Fulling Mill Road
Middletown, PA 17057, United States
(+717) 944-1300
info@phoenixcon.com