

A 120 -40 - Ferrule

1090640

<https://www.phoenixcontact.com/us/products/1090640>



Please be informed that the data shown in this PDF document is generated from our online catalog. Please find the complete data in the user documentation. Our general terms of use for downloads are valid.

Ferrule, Length contact range: 40 mm, sleeve length: 40 mm, color: silver-colored



Your advantages

- The ferrules without plastic sleeve are made from soft tin-plated electrolytic copper

Commercial data

Item number	1090640
Packing unit	50 pc
Minimum order quantity	50 pc
Sales key	BH34
Product key	BH3412
GTIN	4055626901091
Weight per piece (including packing)	9.68 g
Weight per piece (excluding packing)	8.9 g
Customs tariff number	85369010
Country of origin	DE

A 120 -40 - Ferrule

1090640

<https://www.phoenixcontact.com/us/products/1090640>



Technical data

Notes

General	These ferrules are not included in DIN 46228-1: 1992-08
---------	---

Product properties

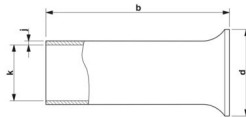
Product type	Cable end sleeve
Conductor category	stranded conductors, class 2, 5, 6 / B, C, K, M
Product property	Made from soft tin-plated electrolytic copper
	Correspond to the requirements of DIN 46228-1 and UL 486F in terms of size
	Long/short-term temperature: +105°C/+120°C

Connection data

Conductor connection

Conductor cross-section flexible max.	120 mm ²
Conductor cross-section AWG max.	250 MCM
Stripping length	40 mm

Dimensions

Dimensional drawing	
Sleeve length	40 mm
Length contact range	40 mm
Maximum stripping length	40 mm
Ferrule diameter	17.7 mm
Sleeve wall thickness	0.5 mm
Inner dimensions of the insulating collar	19 mm

Material specifications

Color	silver-colored
Material	CU-DHP
Coating	galvanically tin-plated
Surface characteristics	Tin-plated

Mechanical properties

Technical data

Sleeve length	40 mm
---------------	-------

Environmental and real-life conditions

A 120 -40 - Ferrule

1090640

<https://www.phoenixcontact.com/us/products/1090640>



Ambient conditions

Permanent temperature	105 °C
Short-term temperature	120 °C

A 120 -40 - Ferrule

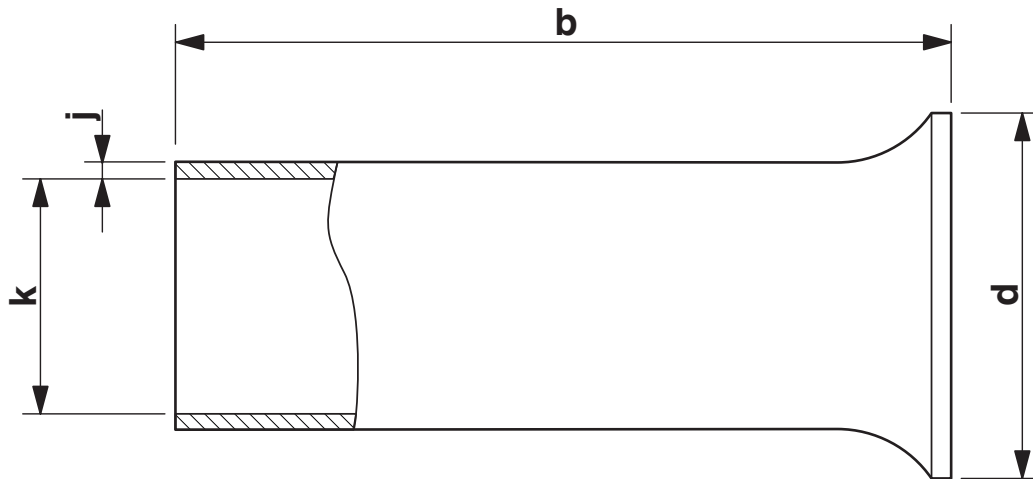
1090640

<https://www.phoenixcontact.com/us/products/1090640>



Drawings

Dimensional drawing



Sleeve length (b), insulating collar inner dimension (d), sleeve diameter (k), sleeve wall thickness (j)

A 120 -40 - Ferrule

1090640

<https://www.phoenixcontact.com/us/products/1090640>



Classifications

ECLASS

ECLASS-13.0	27400201
ECLASS-15.0	27400201

ETIM

ETIM 9.0	EC000005
----------	----------

UNSPSC

UNSPSC 21.0	27121700
-------------	----------

A 120 -40 - Ferrule



1090640
<https://www.phoenixcontact.com/us/products/1090640>

Environmental product compliance

EU RoHS	
Fulfills EU RoHS substance requirements	Yes, No exemptions
China RoHS	
Environment friendly use period (EFUP)	EFUP-E
	No hazardous substances above the limits
EU REACH SVHC	
REACH candidate substance (CAS No.)	No substance above 0.1 wt%

Phoenix Contact 2025 © - all rights reserved
<https://www.phoenixcontact.com>

Phoenix Contact USA
586 Fulling Mill Road
Middletown, PA 17057, United States
(+717) 944-1300
info@phoenixcon.com