

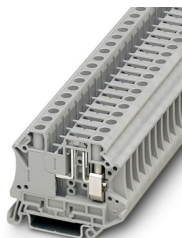
UT 6-TG P/P-EX - Disconnect terminal block



3073870

<https://www.phoenixcontact.com/us/products/3073870>

Please be informed that the data shown in this PDF document is generated from our online catalog. Please find the complete data in the user documentation. Our general terms of use for downloads are valid.



Disconnect terminal block, Current and voltage are determined by the plug used., With test socket screws for insertion of test plugs, nom. voltage: 500 V, nominal current: 20 A, connection method: Screw connection, Rated cross section: 2.5 mm², cross section: 0.2 mm² - 10 mm², mounting: NS 35/7,5, NS 35/15, color: gray

Your advantages

- Double bridge shaft enables individual potential distribution and supply
- Compact design and high current carrying capacity of 20 A
- Suitable for process technology, thanks to Ex nA approval

Commercial data

Item number	3073870
Packing unit	50 pc
Minimum order quantity	50 pc
Sales key	BE01
Product key	BE1132
GTIN	4046356919203
Weight per piece (including packing)	18.135 g
Weight per piece (excluding packing)	18.135 g
Customs tariff number	85369010
Country of origin	PL

UT 6-TG P/P-EX - Disconnect terminal block



3073870

<https://www.phoenixcontact.com/us/products/3073870>

Technical data

Notes

General	Current and voltage are determined by the plug used.
---------	--

Product properties

Product type	Disconnect terminal block
Product family	UT
Area of application	Machine building
	Plant engineering
Number of connections	2
Number of rows	1
Potentials	1

Insulation characteristics

Overvoltage category	III
Degree of pollution	3

Electrical properties

Rated surge voltage	6 kV
Maximum power dissipation for nominal condition	1.31 W

Connection data

Number of connections per level	2
Nominal cross section	6 mm ²

Level 1 above 1 below 1

Connection method	Screw connection
Screw thread	M4
Tightening torque	1.5 ... 1.8 Nm
Stripping length	10 mm
Internal cylindrical gage	A5
Connection in acc. with standard	IEC 60947-7-1
Conductor cross-section rigid	0.2 mm ² ... 10 mm ²
Cross section AWG	24 ... 8 (converted acc. to IEC)
Conductor cross-section flexible	0.2 mm ² ... 10 mm ²
Conductor cross-section, flexible [AWG]	24 ... 8 (converted acc. to IEC)
Conductor cross-section flexible (ferrule without plastic sleeve)	0.25 mm ² ... 6 mm ²
Flexible conductor cross-section (ferrule with plastic sleeve)	0.25 mm ² ... 6 mm ²
2 conductors with same cross section, solid	0.2 mm ² ... 2.5 mm ²
2 conductors with same cross section, flexible	0.2 mm ² ... 2.5 mm ²
2 conductors with same cross section, flexible, with ferrule without plastic sleeve	0.25 mm ² ... 1.5 mm ²
2 conductors with the same cross section, flexible, with TWIN ferrule with plastic sleeve	0.5 mm ² ... 4 mm ²

UT 6-TG P/P-EX - Disconnect terminal block



3073870

<https://www.phoenixcontact.com/us/products/3073870>

Nominal current	20 A
Maximum load current	20 A (with 10 mm ² conductor cross-section)
Nominal voltage	500 V
Nominal cross section	2.5 mm ²

Ex data

Rated data (ATEX/IECEx)

Identification	Ex II 3 G Ex ec IIC Gc
Operating temperature range	-50 °C ... 130 °C
Ex-certified accessories	3047183 ATP-UT-TWIN
	3046499 P-FU 6,3X32-EX
	3046509 P-FU 6,3X32 LED 24-EX
	3046512 P-FU 6,3X32 LED 60-EX
	3046525 P-FU 6,3X32 LA 250-EX
	3022276 CLIPFIX 35-5
	3022218 CLIPFIX 35
List of bridges	1205066 SZS 1,0X4,0 VDE
	Plug-in bridge / FBS 2-8 / 3030284
	Plug-in bridge / FBS 3-8 / 3030297
	Plug-in bridge / FBS 4-8 / 3030307
	Plug-in bridge / FBS 5-8 / 3030310
Bridge data	Plug-in bridge / FBS 10-8 / 3030323
	6.3 A / 6 mm ²
output	(Permanent)

Ex level General

Rated voltage	250 V
Rated current	6.3 A
Maximum load current	6.3 A

Ex connection data General

Torque range	1.5 Nm ... 1.8 Nm
Nominal cross section	6 mm ²
Rated cross section AWG	8
Connection capacity rigid	0.2 mm ² ... 10 mm ²
Connection capacity AWG	24 ... 8
Connection capacity flexible	0.2 mm ² ... 6 mm ²
Connection capacity AWG	24 ... 8
2 conductors with same cross section, solid	0.2 mm ² ... 2.5 mm ²
2 conductors with the same cross-section AWG rigid	24 ... 12
2 conductors with same cross section, stranded	0.2 mm ² ... 2.5 mm ²
2 conductors with the same cross-section AWG flexible	24 ... 12
Conductor cross-section flexible, with ferrule without plastic sleeve min.	0.2 mm ²
Conductor cross-section flexible, with ferrule without plastic	6 mm ²

UT 6-TG P/P-EX - Disconnect terminal block



3073870

<https://www.phoenixcontact.com/us/products/3073870>

sleeve max.	
Single conductor/terminal point, flexible, with ferrule, without plastic sleeve, AWG	24 ... 12

Dimensions

Width	8.2 mm
Height	57.8 mm
Depth on NS 35/7,5	47.5 mm
Depth on NS 35/15	55 mm

Material specifications

Color	gray (RAL 7042)
Flammability rating according to UL 94	V0
Insulating material group	I
Insulating material	PA
Static insulating material application in cold	-60 °C
Temperature index of insulation material (DIN EN 60216-1 (VDE 0304-21))	130 °C
Relative insulation material temperature index (Elec., UL 746 B)	130 °C
Fire protection for rail vehicles (DIN EN 45545-2) R22	HL 1 - HL 3
Fire protection for rail vehicles (DIN EN 45545-2) R23	HL 1 - HL 3
Fire protection for rail vehicles (DIN EN 45545-2) R24	HL 1 - HL 3
Fire protection for rail vehicles (DIN EN 45545-2) R26	HL 1 - HL 3
Calorimetric heat release NFPA 130 (ASTM E 1354)	28 MJ/kg
Surface flammability NFPA 130 (ASTM E 162)	passed
Specific optical density of smoke NFPA 130 (ASTM E 662)	passed
Smoke gas toxicity NFPA 130 (SMP 800C)	passed

Mechanical properties

Mechanical data

Open side panel	No
-----------------	----

Environmental and real-life conditions

Ambient conditions

Ambient temperature (operation)	-60 °C ... 110 °C (Operating temperature range incl. self-heating; for max. short-term operating temperature, see RTI Elec.)
Ambient temperature (storage/transport)	-25 °C ... 60 °C (for a short time, not exceeding 24 h, -60 °C to +70 °C)
Ambient temperature (assembly)	-5 °C ... 70 °C
Ambient temperature (actuation)	-5 °C ... 70 °C
Permissible humidity (operation)	20 % ... 90 %
Permissible humidity (storage/transport)	30 % ... 70 %

Standards and regulations

Connection in acc. with standard	IEC 60947-7-1
----------------------------------	---------------

UT 6-TG P/P-EX - Disconnect terminal block



3073870

<https://www.phoenixcontact.com/us/products/3073870>

Mounting

Mounting type	NS 35/7,5
	NS 35/15

UT 6-TG P/P-EX - Disconnect terminal block

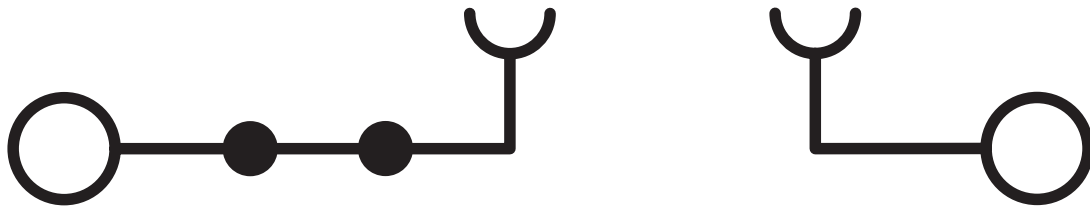


3073870

<https://www.phoenixcontact.com/us/products/3073870>

Drawings

Circuit diagram



UT 6-TG P/P-EX - Disconnect terminal block



3073870

<https://www.phoenixcontact.com/us/products/3073870>

Approvals

To download certificates, visit the product detail page: <https://www.phoenixcontact.com/us/products/3073870>



CSA
Approval ID: 13631



CSA
Approval ID: 13631



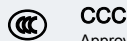
cUL Recognized
Approval ID: E192998

	Nominal voltage U_N	Nominal current I_N	Cross section AWG	Cross section mm^2
keine				
	250 V	6.3 A	24 - 8	24 - 8



UL Recognized
Approval ID: E192998

	Nominal voltage U_N	Nominal current I_N	Cross section AWG	Cross section mm^2
keine				
	250 V	6.3 A	24 - 8	-



CCC
Approval ID: 2020322313000632



UKCA-EX
Approval ID: UL22UKEX2452U



EAC Ex
Approval ID: KZ 7500525010101950



IECEx
Approval ID: IECExUL13.0007U

	Nominal voltage U_N	Nominal current I_N	Cross section AWG	Cross section mm^2
keine				
	250 V	6.3 A	-	0.2 - 10



ATEX
Approval ID: DEMKO14ATEX1353U


UT 6-TG P/P-EX - Disconnect terminal block



3073870

<https://www.phoenixcontact.com/us/products/3073870>

	Nominal voltage U_N	Nominal current I_N	Cross section AWG	Cross section mm^2
keine				
	250 V	6.3 A	-	0.2 - 10

 CSA Approval ID: 2725780				
	Nominal voltage U_N	Nominal current I_N	Cross section AWG	Cross section mm^2
B				
	250 V	6.3 A	24 - 8	-
C				
	250 V	6.3 A	24 - 8	-

UT 6-TG P/P-EX - Disconnect terminal block



3073870

<https://www.phoenixcontact.com/us/products/3073870>

Classifications

ECLASS

ECLASS-13.0	27250108
ECLASS-15.0	27250108

ETIM

ETIM 9.0	EC000902
----------	----------

UNSPSC

UNSPSC 21.0	39121400
-------------	----------

UT 6-TG P/P-EX - Disconnect terminal block



3073870

<https://www.phoenixcontact.com/us/products/3073870>

Environmental product compliance

EU RoHS

Fulfills EU RoHS substance requirements	Yes
Exemption	6(c)

China RoHS

Environment friendly use period (EFUP)	EFUP-50
	An article-related China RoHS declaration table can be found in the download area for the respective article under "Manufacturer declaration". For all articles with EFUP-E, no China RoHS declaration table issued and required.

EU REACH SVHC

REACH candidate substance (CAS No.)	Lead(CAS: 7439-92-1)
SCIP	618cbc78-d374-4b56-9d4c-9c48f34cbb07

Phoenix Contact 2025 © - all rights reserved

<https://www.phoenixcontact.com>

Phoenix Contact USA
586 Fulling Mill Road
Middletown, PA 17057, United States
(+717) 944-1300
info@phoenixcon.com