

A 0,34- 7 - Ferrule



3009202

<https://www.phoenixcontact.com/us/products/3009202>

Please be informed that the data shown in this PDF document is generated from our online catalog. Please find the complete data in the user documentation. Our general terms of use for downloads are valid.



Ferrule, Length contact range: 7 mm, sleeve length: 7 mm, color: silver-colored

Your advantages

- The ferrules without plastic sleeve are made from soft tin-plated electrolytic copper

Commercial data

| | |
|--------------------------------------|---------------|
| Item number | 3009202 |
| Packing unit | 1,000 pc |
| Minimum order quantity | 1,000 pc |
| Sales key | BH34 |
| Product key | BH3412 |
| GTIN | 4017918091712 |
| Weight per piece (including packing) | 0.031 g |
| Weight per piece (excluding packing) | 0.029 g |
| Customs tariff number | 85369010 |
| Country of origin | DE |

A 0,34- 7 - Ferrule

3009202

<https://www.phoenixcontact.com/us/products/3009202>



Technical data

Product properties

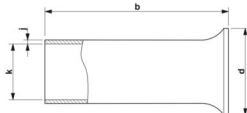
| | |
|------------------|--|
| Product type | Cable end sleeve |
| Product property | Made from soft tin-plated electrolytic copper |
| | Correspond to the requirements of DIN 46228-1 and UL 486F in terms of size |
| | Long/short-term temperature: +105°C/+120°C |

Connection data

Conductor connection

| | |
|---------------------------------------|----------------------|
| Conductor cross-section flexible max. | 0.34 mm ² |
| Conductor cross-section AWG max. | 22 |
| Stripping length | 7 mm |

Dimensions

| | |
|---|--|
| Dimensional drawing |  |
| Sleeve length | 7 mm |
| Length contact range | 7 mm |
| Maximum stripping length | 7 mm |
| Ferrule diameter | 0.9 mm |
| Sleeve wall thickness | 0.15 mm |
| Inner dimensions of the insulating collar | 1.8 mm |

Material specifications

| | |
|-------------------------|-------------------------|
| Color | silver-colored |
| Material | CU-DHP |
| Coating | galvanically tin-plated |
| Surface characteristics | Tin-plated |

Mechanical properties

Technical data

| | |
|---------------|------|
| Sleeve length | 7 mm |
|---------------|------|

Environmental and real-life conditions

Ambient conditions

| | |
|------------------------|--------|
| Permanent temperature | 105 °C |
| Short-term temperature | 120 °C |

A 0,34- 7 - Ferrule

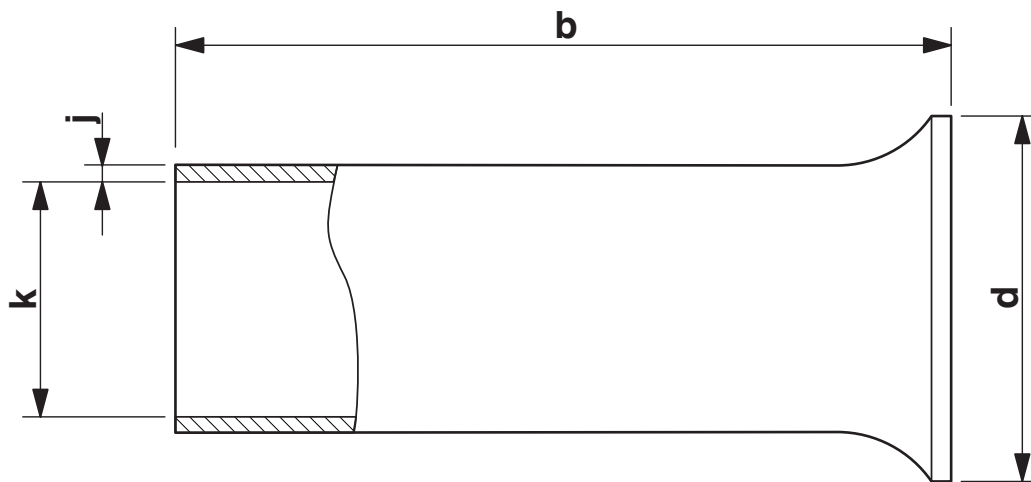
3009202

<https://www.phoenixcontact.com/us/products/3009202>



Drawings

Dimensional drawing



Sleeve length (b), insulating collar inner dimension (d), sleeve diameter (k), sleeve wall thickness (j)

A 0,34- 7 - Ferrule

3009202

<https://www.phoenixcontact.com/us/products/3009202>



Classifications

ECLASS

| | |
|-------------|----------|
| ECLASS-13.0 | 27400201 |
| ECLASS-15.0 | 27400201 |

ETIM

| | |
|----------|----------|
| ETIM 9.0 | EC000005 |
|----------|----------|

UNSPSC

| | |
|-------------|----------|
| UNSPSC 21.0 | 27121700 |
|-------------|----------|

A 0,34- 7 - Ferrule

3009202

<https://www.phoenixcontact.com/us/products/3009202>



Environmental product compliance

EU RoHS

| | |
|---|--------------------|
| Fulfills EU RoHS substance requirements | Yes, No exemptions |
|---|--------------------|

China RoHS

| | |
|--|--|
| Environment friendly use period (EFUP) | EFUP-E |
| | No hazardous substances above the limits |

EU REACH SVHC

| | |
|-------------------------------------|----------------------------|
| REACH candidate substance (CAS No.) | No substance above 0.1 wt% |
|-------------------------------------|----------------------------|

Phoenix Contact 2025 © - all rights reserved
<https://www.phoenixcontact.com>

Phoenix Contact USA
586 Fulling Mill Road
Middletown, PA 17057, United States
(+717) 944-1300
info@phoenixcon.com