

# SUP-0-SMA-1YR - Building management system

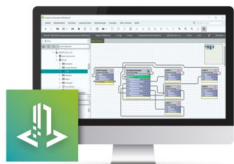


2404175

<https://www.phoenixcontact.com/us/products/2404175>

Please be informed that the data shown in this PDF document is generated from our online catalog. Please find the complete data in the user documentation. Our general terms of use for downloads are valid.

Maintenance license (1 year) for the SUP-0 Emalytics Supervisor license



## Commercial data

Item number	2404175
Packing unit	1 pc
Note	Made to order (non-returnable)
Sales key	DR18
Product key	DRHBAA
GTIN	4055626349251
Weight per piece (including packing)	0.001 MGM
Weight per piece (excluding packing)	0.001 MGM
Customs tariff number	49119900
Country of origin	US

# SUP-0-SMA-1YR - Building management system



2404175

<https://www.phoenixcontact.com/us/products/2404175>

## Technical data

### Product properties

Product type	Building management system
Area of application	Building technology

### System properties

Type of software	On-premises
Intended use for the software	Automation

### License information

Type of license	Maintenance license
License duration	1 Year

### Functionality

Integrated function	Analysis
	Data acquisition
	Diagnostics
	Startup
	Communication
	Configuration
	Project planning
	Simulation
Target system	Server
Supported controllers	ILC 2050 BI
Number of data points	not relevant
Number of clients	0

### System requirements

Languages supported	German, English
Screen resolution	1024 x 768 pixel(s) ,or higher

# SUP-0-SMA-1YR - Building management system



2404175

<https://www.phoenixcontact.com/us/products/2404175>

## Classifications

### ECLASS

ECLASS-13.0	27242590
ECLASS-15.0	27242590

### ETIM

ETIM 9.0	EC001435
----------	----------

### UNSPSC

UNSPSC 21.0	43233600
-------------	----------

Environmental product compliance

EU RoHS	
Fulfills EU RoHS substance requirements	Not applicable, No electrical and electronic equipment (EEE), cannot be used in EEE
EU REACH SVHC	
REACH candidate substance (CAS No.)	No substance above 0.1 wt%

Phoenix Contact 2025 © - all rights reserved  
<https://www.phoenixcontact.com>

Phoenix Contact USA  
586 Fulling Mill Road  
Middletown, PA 17057, United States  
(+717) 944-1300  
[info@phoenixcon.com](mailto:info@phoenixcon.com)