

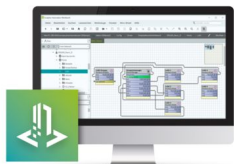
# SUP-UP-1 - Building management system



2404164

<https://www.phoenixcontact.com/us/products/2404164>

Please be informed that the data shown in this PDF document is generated from our online catalog. Please find the complete data in the user documentation. Our general terms of use for downloads are valid.



Upgrade of the Emalytics Supervisor license for connectivity to an additional Emalytics Controller (it is possible to use several update licenses to integrate more than one additional controller).

## Commercial data

|                                      |                                |
|--------------------------------------|--------------------------------|
| Item number                          | 2404164                        |
| Packing unit                         | 1 pc                           |
| Note                                 | Made to order (non-returnable) |
| Sales key                            | DR18                           |
| Product key                          | DRHBAA                         |
| GTIN                                 | 4055626349169                  |
| Weight per piece (including packing) | 0.001 MGM                      |
| Weight per piece (excluding packing) | 0.001 MGM                      |
| Customs tariff number                | 49119900                       |
| Country of origin                    | US                             |

# SUP-UP-1 - Building management system



2404164

<https://www.phoenixcontact.com/us/products/2404164>

## Technical data

### Product properties

|                     |                            |
|---------------------|----------------------------|
| Product type        | Building management system |
| Area of application | Building technology        |

### System properties

|                               |             |
|-------------------------------|-------------|
| Type of software              | On-premises |
| Intended use for the software | Automation  |

### License information

|                  |                 |
|------------------|-----------------|
| Type of license  | Runtime license |
|                  | Update license  |
| License duration | not relevant    |

### Functionality

|                       |                  |
|-----------------------|------------------|
| Integrated function   | Analysis         |
|                       | Data acquisition |
|                       | Diagnostics      |
|                       | Startup          |
|                       | Communication    |
|                       | Configuration    |
|                       | Project planning |
|                       | Simulation       |
| Target system         | Server           |
| Supported controllers | ILC 2050 BI      |
| Number of data points | not relevant     |
| Number of clients     | 1                |

### System requirements

|                     |                                |
|---------------------|--------------------------------|
| Languages supported | German, English                |
| Screen resolution   | 1024 x 768 pixel(s) ,or higher |

# SUP-UP-1 - Building management system



2404164

<https://www.phoenixcontact.com/us/products/2404164>

## Classifications

### ECLASS

|             |          |
|-------------|----------|
| ECLASS-13.0 | 27242590 |
| ECLASS-15.0 | 27242590 |

### ETIM

|          |          |
|----------|----------|
| ETIM 9.0 | EC001435 |
|----------|----------|

### UNSPSC

|             |          |
|-------------|----------|
| UNSPSC 21.0 | 43233600 |
|-------------|----------|

Environmental product compliance

|   |   |
|---|---|
| EU RoHS                                 |   |
| Fulfills EU RoHS substance requirements | Not applicable, No electrical and electronic equipment (EEE), cannot be used in EEE |
| EU REACH SVHC                           |   |
| REACH candidate substance (CAS No.)     | No substance above 0.1 wt%  |

Phoenix Contact 2025 © - all rights reserved  
<https://www.phoenixcontact.com>

Phoenix Contact USA  
586 Fulling Mill Road  
Middletown, PA 17057, United States  
(+717) 944-1300  
[info@phoenixcon.com](mailto:info@phoenixcon.com)