

# RC-12S1N121600 - Cable connector



1598494

<https://www.phoenixcontact.com/us/products/1598494>

Please be informed that the data shown in this PDF document is generated from our online catalog. Please find the complete data in the user documentation. Our general terms of use for downloads are valid.



M23, Cable connector, series: RC, straight, shielded: no, Screw locking mechanism, No. of pos.: 12, Direction of rotation: Standard, contact connection type: Socket, Solder cup, coding: N, this item is expected to be lead-free from Q2 2026 in accordance with RoHS II without exception 6c (Pb < 0.1%), a lead-free alternative is possible on request in advance

## Commercial data

Item number	1598494
Packing unit	20 pc
Minimum order quantity	1 pc
Note	Made to order (non-returnable)
Sales key	AB31
Product key	ABRAFA
GTIN	4046356220873
Weight per piece (including packing)	82.882 g
Weight per piece (excluding packing)	78.74 g
Customs tariff number	85366990
Country of origin	DE

# RC-12S1N121600 - Cable connector



1598494

<https://www.phoenixcontact.com/us/products/1598494>

## Technical data

### Notes

Order information:	Order cable glands separately
--------------------	-------------------------------

### Product properties

Product type	Circular connector (cable-side)
Thread type	M23

### Material specifications

Flammability rating according to UL 94	V0
----------------------------------------	----

### Connector

#### Insulating body

Coding	N
Material (Insulating body)	PBT
Material (Contact)	CuZn
Material (Contact surface)	Ni/Au
Insertion/withdrawal cycles	50
Connection method	Solder cup
Contact switching type	Socket
Application	Signal
Number of positions	12
Direction of rotation	Standard
Connection profile	12
Number Contact (Contact group 1)	12
Diameter Contact (Contact group 1)	1 mm
Litz wire cross-section min. Contact (Contact group 1)	0.08 mm <sup>2</sup>
Litz wire cross-section max. Contact (Contact group 1)	1 mm <sup>2</sup>
Rated current Contact (Contact group 1)	8 A (for max. connection cross section)
Rated voltage Contact (Contact group 1)	48 V AC 74 V DC
Rated surge voltage	1.5 kV
Overvoltage category	III
Degree of pollution	3

#### Housing

Type	Cable connector housing
Thread type	M23
Design	straight
Type of locking	Screw locking mechanism
Pg screw connection	Pg11
Mounting type	Screw mounting (Pg11)

# RC-12S1N121600 - Cable connector



1598494

<https://www.phoenixcontact.com/us/products/1598494>

Material (Housing)	Metal
Degree of protection (plugged in)	IP65
	IP67

## Environmental and real-life conditions

### Ambient conditions

Degree of protection	IP67
----------------------	------

# RC-12S1N121600 - Cable connector

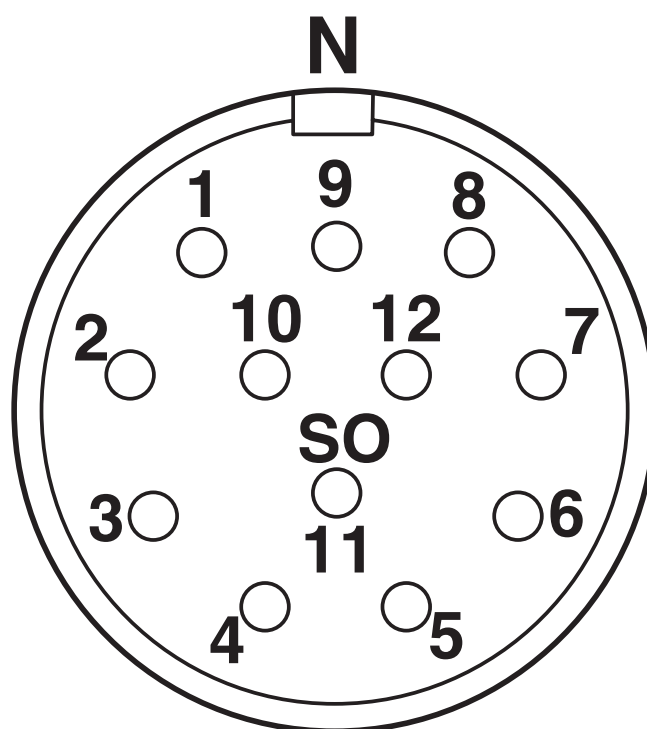
1598494

<https://www.phoenixcontact.com/us/products/1598494>



## Drawings

Schematic diagram



Connector pin assignment

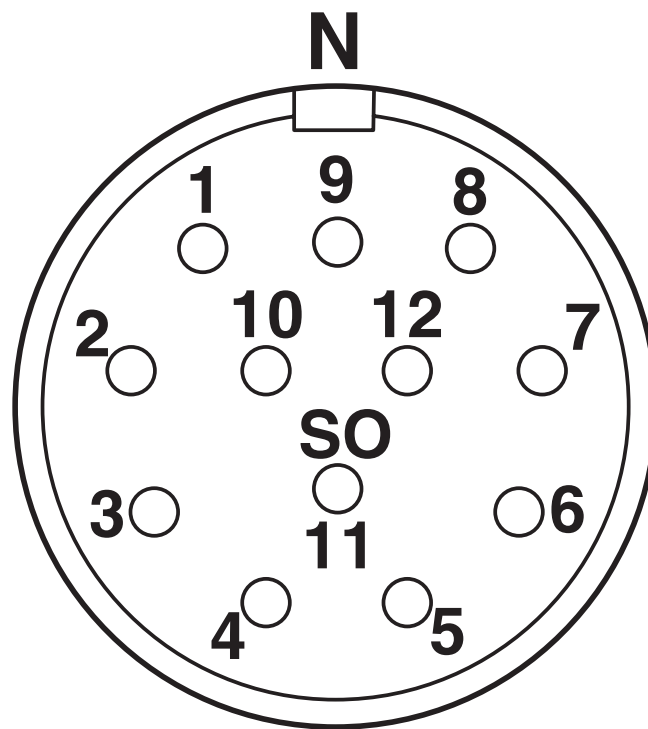
# RC-12S1N121600 - Cable connector

1598494

<https://www.phoenixcontact.com/us/products/1598494>



Schematic diagram



Connector pin assignment

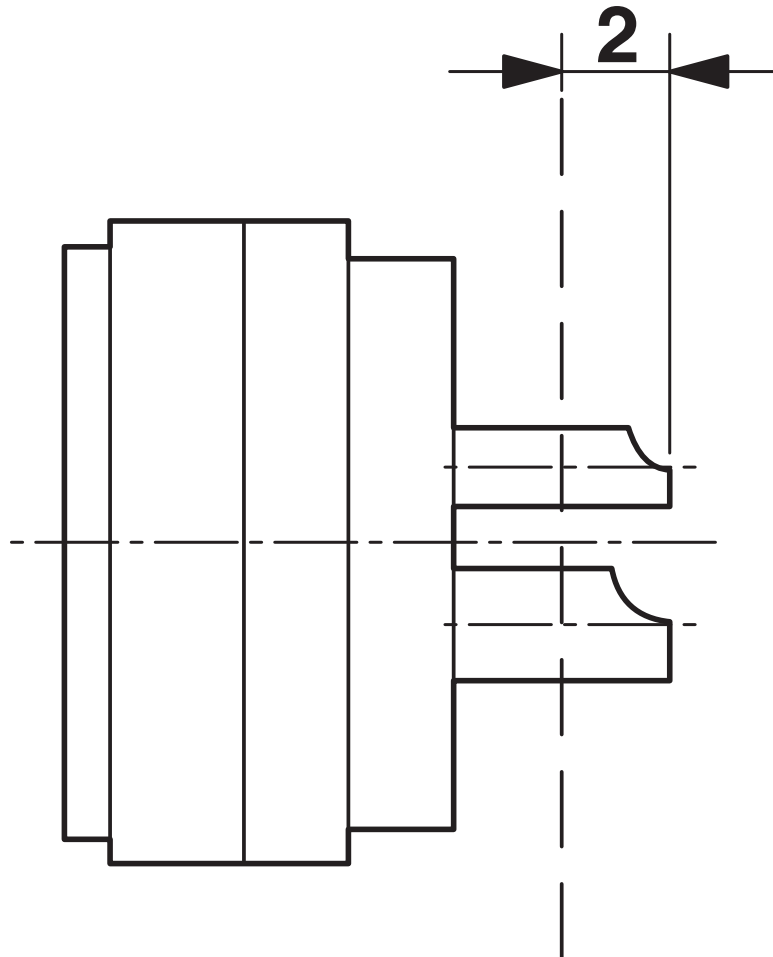
# RC-12S1N121600 - Cable connector



1598494

<https://www.phoenixcontact.com/us/products/1598494>

Schematic diagram



Dimensional drawing

# RC-12S1N121600 - Cable connector



1598494

<https://www.phoenixcontact.com/us/products/1598494>

## Classifications

### ECLASS

ECLASS-13.0	27440116
ECLASS-15.0	27440116

### ETIM

ETIM 9.0	EC002635
----------	----------

### UNSPSC

UNSPSC 21.0	39121400
-------------	----------

# RC-12S1N121600 - Cable connector



1598494

<https://www.phoenixcontact.com/us/products/1598494>

## Environmental product compliance

### EU RoHS

Fulfills EU RoHS substance requirements	Yes
Exemption	6(c)

### China RoHS

Environment friendly use period (EFUP)	EFUP-50
	An article-related China RoHS declaration table can be found in the download area for the respective article under "Manufacturer declaration". For all articles with EFUP-E, no China RoHS declaration table issued and required.

### EU REACH SVHC

REACH candidate substance (CAS No.)	Lead(CAS: n/a)
SCIP	7400dfb5-a691-4e77-b1da-3f4d1de747c4

Phoenix Contact 2025 © - all rights reserved

<https://www.phoenixcontact.com>

Phoenix Contact USA  
586 Fulling Mill Road  
Middletown, PA 17057, United States  
(+717) 944-1300  
[info@phoenixcon.com](mailto:info@phoenixcon.com)