

# H4X:2AC - Housing

1415782

<https://www.phoenixcontact.com/us/products/1415782>



Please be informed that the data shown in this PDF document is generated from our online catalog. Please find the complete data in the user documentation. Our general terms of use for downloads are valid.



HEAVYPORT B24 panel mounting base, with single locking latch, with plastic protective cover, with stainless steel front plate connections, 2x 120 V AC outlet

## Your advantages

- Good shielding in the event of electromagnetic interference

## Commercial data

|                                      |               |
|--------------------------------------|---------------|
| Item number                          | 1415782       |
| Packing unit                         | 1 pc          |
| Minimum order quantity               | 1 pc          |
| Sales key                            | BF69          |
| Product key                          | AF7EGX        |
| GTIN                                 | 4055626805832 |
| Weight per piece (including packing) | 22.22 g       |
| Weight per piece (excluding packing) | 22.22 g       |
| Country of origin                    | US            |

# H4X:2AC - Housing

1415782

<https://www.phoenixcontact.com/us/products/1415782>



## Technical data

### Product properties

|                  |                       |
|------------------|-----------------------|
| Product type     | Stackable housing set |
| Housing type     | Panel mounting base   |
| Application      | Standard              |
| Type             | B24                   |
| Protective cover | yes                   |

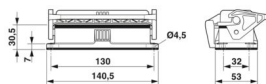
### Electrical properties

|                       |                                                                          |
|-----------------------|--------------------------------------------------------------------------|
| Rated voltage (III/3) | max. 125 V AC ()<br>Requires slip-on sleeve: Item No. 3240541 or 3240536 |
| Rated current         | 15 A ()                                                                  |

### Connection data

|                   |              |
|-------------------|--------------|
| Tightening torque | 1.5 ... 2 Nm |
|-------------------|--------------|

### Dimensions

|                     |                                                                                      |
|---------------------|--------------------------------------------------------------------------------------|
| Dimensional drawing |  |
| Width               | 53 mm                                                                                |
| Height              | 30.5 mm                                                                              |
| Length              | 140.5 mm                                                                             |

### Installation dimensions

|                               |        |
|-------------------------------|--------|
| Width of the assembly cutout  | 35 mm  |
| Length of the assembly cutout | 113 mm |

### Material specifications

|                            |                                         |
|----------------------------|-----------------------------------------|
| Material                   | Stainless steel (Front plate)           |
| Seal material              | NBR, conductive<br>NBR, conductive      |
| Housing material           | Die-cast aluminum, salt water resistant |
| Housing surface material   | uncoated                                |
| Material, protective cover | PA                                      |
| Locking latch material     | Polyamide                               |

### Connector

|                       |                                                      |
|-----------------------|------------------------------------------------------|
| Contact insert design | with 2x 120 V AC outlet Terminal 6.35 mm (0.250 in.) |
|-----------------------|------------------------------------------------------|

### Environmental and real-life conditions

|                    |  |
|--------------------|--|
| Ambient conditions |  |
|--------------------|--|

# H4X:2AC - Housing

1415782

<https://www.phoenixcontact.com/us/products/1415782>



|                                 |                             |
|---------------------------------|-----------------------------|
| Degree of protection            | IP66                        |
|                                 | IP67                        |
| Impact strength                 | IK08                        |
| Ambient temperature (operation) | -40 °C ... 125 °C (Housing) |

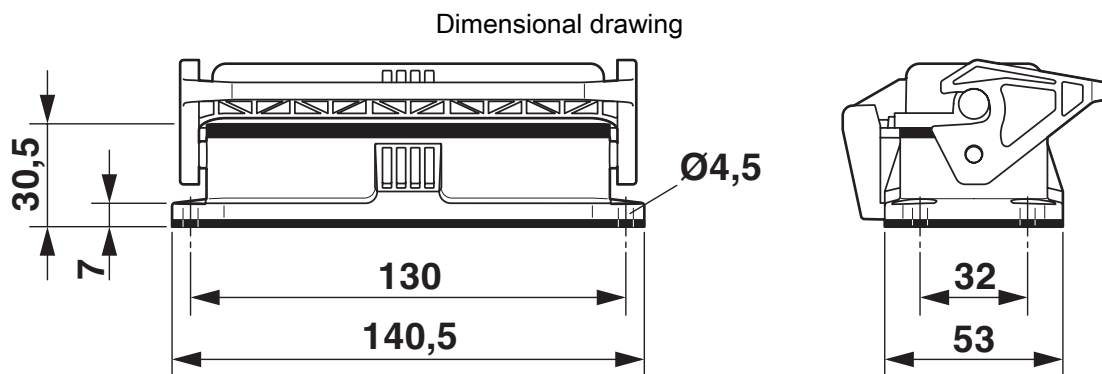
# H4X:2AC - Housing

1415782

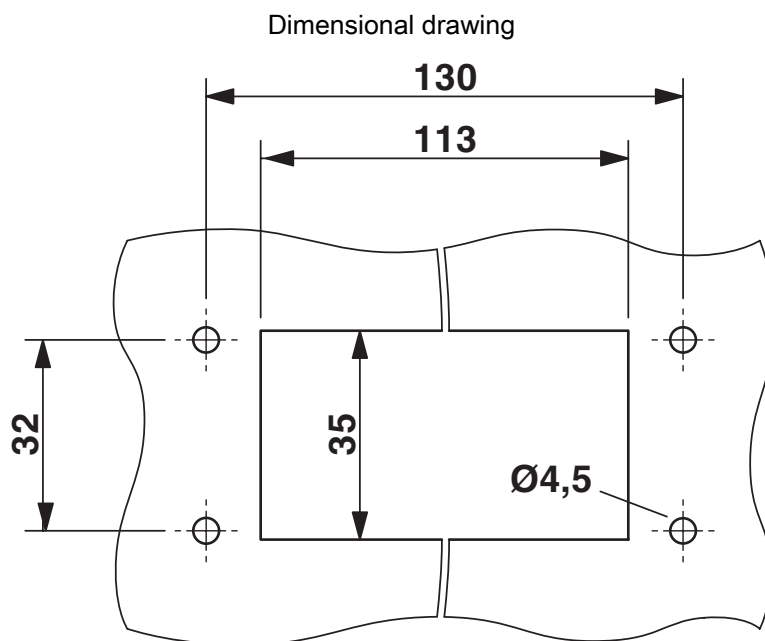
<https://www.phoenixcontact.com/us/products/1415782>



## Drawings



Dimensional drawing



Mounting cutout

# H4X:2AC - Housing

1415782

<https://www.phoenixcontact.com/us/products/1415782>



## Classifications

### ECLASS

|             |          |
|-------------|----------|
| ECLASS-15.0 | 27440113 |
| ECLASS-13.0 | 27440113 |

### ETIM

|          |          |
|----------|----------|
| ETIM 9.0 | EC002636 |
|----------|----------|

Environmental product compliance

|                                        |                                                                                                                                                                                                                                                                 |
|----------------------------------------|-----------------------------------------------------------------------------------------------------------------------------------------------------------------------------------------------------------------------------------------------------------------|
| China RoHS                             |                                                                                                                                                                                                                                                                 |
| Environment friendly use period (EFUP) | <div>EFUP-50</div> <div>An article-related China RoHS declaration table can be found in the download area for the respective article under "Manufacturer declaration". For all articles with EFUP-E, no China RoHS declaration table issued and required.</div> |
| EU REACH SVHC                          |                                                                                                                                                                                                                                                                 |
| REACH candidate substance (CAS No.)    | No substance above 0.1 wt%                                                                                                                                                                                                                                      |

Phoenix Contact 2025 © - all rights reserved  
<https://www.phoenixcontact.com>

Phoenix Contact USA  
586 Fulling Mill Road  
Middletown, PA 17057, United States  
(+717) 944-1300  
[info@phoenixcon.com](mailto:info@phoenixcon.com)