

VS-PPC-F1-RJ45-MNNA-1R-PHA - Panel-mount frame



1608029

<https://www.phoenixcontact.com/us/products/1608029>

Please be informed that the data shown in this PDF document is generated from our online catalog. Please find the complete data in the user documentation. Our general terms of use for downloads are valid.



RJ45 panel mounting frame, IP67, for push-pull interlocking, metal, for PCB connection, for square panel cutout, with grommet, without mounting screws

Commercial data

Item number	1608029
Packing unit	1 pc
Minimum order quantity	1 pc
Sales key	AB17
Product key	ABNODC
GTIN	4046356131698
Weight per piece (including packing)	17.8 g
Weight per piece (excluding packing)	16.4 g
Customs tariff number	85366990
Country of origin	DE

VS-PPC-F1-RJ45-MNNA-1R-PHA - Panel-mount frame



1608029
<https://www.phoenixcontact.com/us/products/1608029>

Technical data

Notes

General	This product corresponds to the PROFINET Cabling and Interconnection Technology Guideline for PROFINET regulations, version 2.00, order no: 2.252, Chapter 8.2 Connectors for Outside Environment (Balanced cabling) and chapter 13 Application specific Cabling and Interconnection Technology (AIDA)
---------	--

Product properties

Product type	Panel-mount frame
Application	RJ45 PCB connection
Type	RJ45
Number of positions	8
Connection profile	RJ45

Insulation characteristics

Degree of pollution	2
---------------------	---

Electrical properties

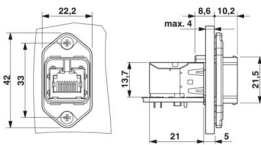
Transmission medium	Copper
---------------------	--------

Connection data

Connection technology

Connection method	Push-Pull
-------------------	-----------

Dimensions

Dimensional drawing	
Width	22.2 mm
Height	42 mm
Length	18.8 mm

Material specifications

Color	nickel-plated
Material	Metal
Flammability rating according to UL 94	V0
Seal material	NBR
Seal material	NBR
Housing material	Metal
Housing surface material	nickel-plated

VS-PPC-F1-RJ45-MNNA-1R-PHA - Panel-mount frame



1608029

<https://www.phoenixcontact.com/us/products/1608029>

Mechanical properties

Mechanical data

Insertion/withdrawal cycles	≥ 500
-----------------------------	-------

Environmental and real-life conditions

Ambient conditions

Degree of protection	IP65/IP67
Ambient temperature (operation)	-40 °C ... 70 °C

Mounting

Mounting type	Panel mounting
---------------	----------------

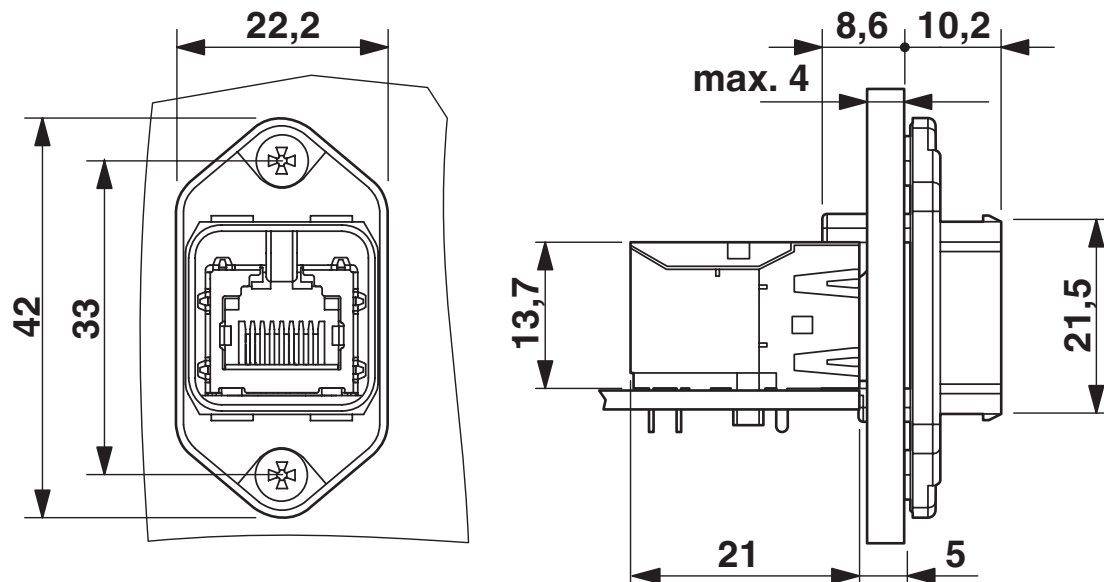
VS-PPC-F1-RJ45-MNNA-1R-PHA - Panel-mount frame

1608029

<https://www.phoenixcontact.com/us/products/1608029>

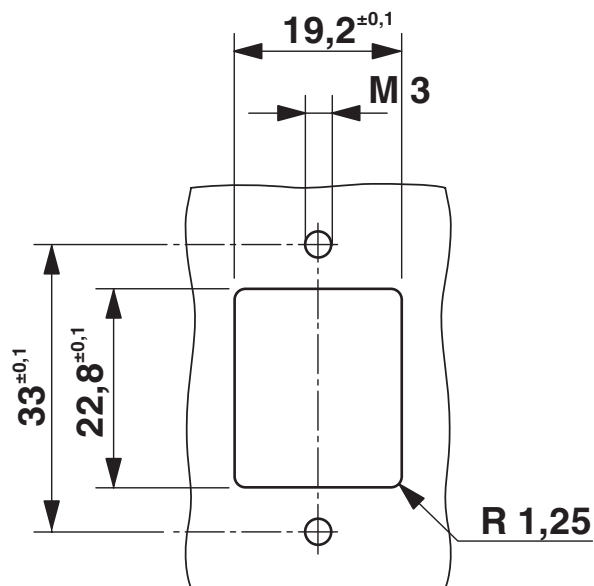
Drawings

Dimensional drawing



Push-Pull panel mounting frame RJ45

Dimensional drawing



Mounting cutout

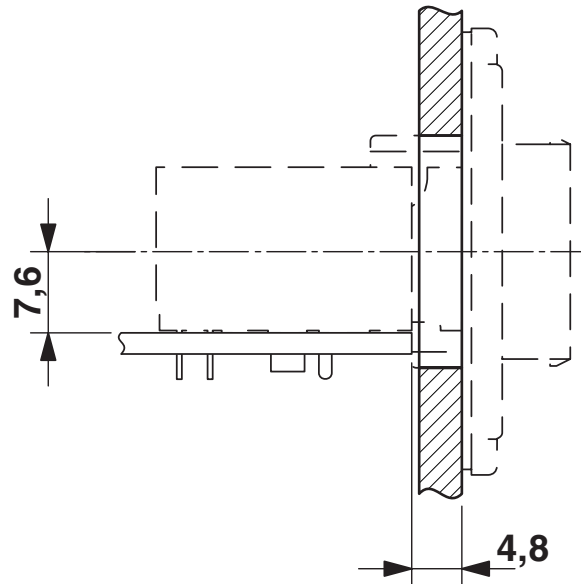
VS-PPC-F1-RJ45-MNNA-1R-PHA - Panel-mount frame



1608029

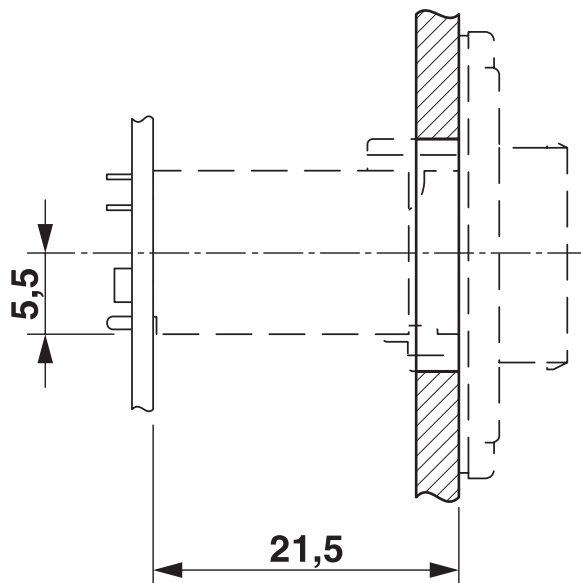
<https://www.phoenixcontact.com/us/products/1608029>

Dimensional drawing



Mounting cutout

Dimensional drawing



Mounting cutout

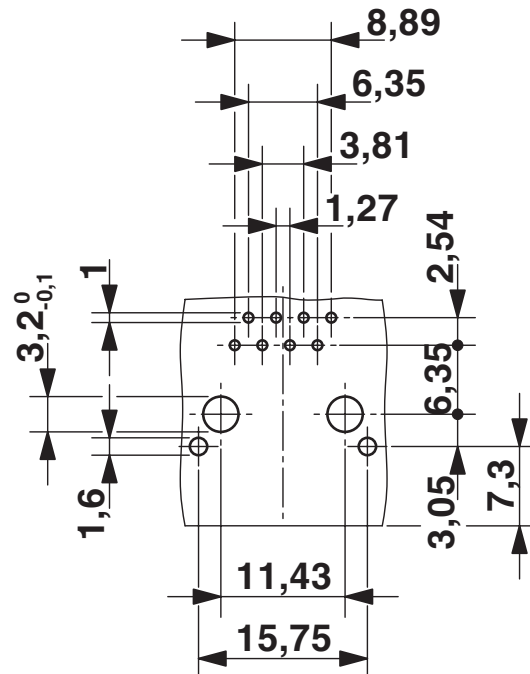
VS-PPC-F1-RJ45-MNNA-1R-PHA - Panel-mount frame



1608029

<https://www.phoenixcontact.com/us/products/1608029>

Drilling plan/solder pad geometry



Drilling diagram

VS-PPC-F1-RJ45-MNNA-1R-PHA - Panel-mount frame



1608029
<https://www.phoenixcontact.com/us/products/1608029>

Classifications

ECLASS

ECLASS-13.0	27440210
ECLASS-15.0	27440210

ETIM

ETIM 9.0	EC002310
----------	----------

UNSPSC

UNSPSC 21.0	39121400
-------------	----------

VS-PPC-F1-RJ45-MNNA-1R-PHA - Panel-mount frame



1608029
<https://www.phoenixcontact.com/us/products/1608029>

Environmental product compliance

EU RoHS	
Fulfills EU RoHS substance requirements	Yes, No exemptions
China RoHS	
Environment friendly use period (EFUP)	EFUP-E
	No hazardous substances above the limits
EU REACH SVHC	
REACH candidate substance (CAS No.)	No substance above 0.1 wt%

Phoenix Contact 2025 © - all rights reserved
<https://www.phoenixcontact.com>

Phoenix Contact USA
586 Fulling Mill Road
Middletown, PA 17057, United States
(+717) 944-1300
info@phoenixcon.com