

1523707  
<https://www.phoenixcontact.com/us/products/1523707>

Please be informed that the data shown in this PDF document is generated from our online catalog. Please find the complete data in the user documentation. Our general terms of use for downloads are valid.



Patch cable, RJ45/IP20 straight on RJ45/IP20 straight, cable length: 12.5 m, number of positions: 8, CAT6<sub>A</sub>, connection cross section: AWG 26- 26, Ethernet, 4x2xAWG26/7; S/FTP, green

Your advantages

- Perfect for office, building, and protected industrial applications (e.g., in control cabinets)
- Worldwide approval with CE, UL, WEEE, and EAC
- Secure connection and disconnection with reliable locking clip protection
- Ideal EMC properties, thanks to 360° shielding
- Simultaneous power transmission with PoE++
- Future-proof high-speed data transmission with up to 10 Gbps (CAT6<sub>A</sub>)

Commercial data

Item number	1523707
Packing unit	1 pc
Minimum order quantity	1 pc
Sales key	AB11
Product key	ABNABH
GTIN	4063151990275
Weight per piece (including packing)	645.9 g
Weight per piece (excluding packing)	660.6 g
Customs tariff number	85444210
Country of origin	CN

1523707

<https://www.phoenixcontact.com/us/products/1523707>

## Technical data

### Product properties

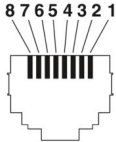
Product type	Data cable preassembled
Product family	RJ45 STANDARD CAT6A
Sensor type	Ethernet
Number of positions	8
Shielded	yes

### Electrical properties

Rated voltage (III/2)	72 V
Power transmission	PoE++

### Connector

#### Connection 1

Dimensional drawing	 <p>Connector pin assignment plug RJ45</p>
Type	RJ45 Plug, straight, 8-position
Number of positions	8
Shielded	yes
Signal type/category	Ethernet CAT6 <sub>A</sub> (IEC 11801:2002), 10 Gbps
Insertion/withdrawal cycles	≥ 750
Insertion force	30 N (per signal contact)
Withdrawal force	50 N (per signal contact)
Overvoltage category	I
Degree of pollution	2
Material Contact	Brass
Material Contact surface	Au
Material Contact carrier	PC
Color (Housing)	green
Flammability rating according to UL 94	V0
Degree of protection	IP20
Ambient temperature (operation)	-20 °C ... 80 °C

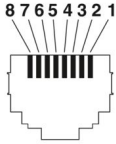
#### Connection 2

# NBC-R4OC/12,5-BC6A/R4OC-GR - Patch cable



1523707

<https://www.phoenixcontact.com/us/products/1523707>

Dimensional drawing	 <p>Connector pin assignment plug RJ45</p>
Type	RJ45 Plug, straight, 8-position
Number of positions	8
Shielded	yes
Signal type/category	Ethernet CAT6 <sub>A</sub> (IEC 11801:2002), 10 Gbps
Insertion/withdrawal cycles	≥ 750
Insertion force	30 N (per signal contact)
Withdrawal force	50 N (per signal contact)
Overvoltage category	I
Degree of pollution	2
Material Contact	Brass
Material Contact surface	Au
Material Contact carrier	PC
Color (Housing)	green
Flammability rating according to UL 94	V0
Degree of protection	IP20
Ambient temperature (operation)	-20 °C ... 80 °C

## Cable/line

Cable length	12.50 m
--------------	---------

Ethernet, Type B, 8-pos., CAT6A, LSZH [BC6A]

Number of positions	8
Shielded	yes
Cable type	Ethernet, Type B, 8-pos., CAT6A, LSZH [BC6A]
Conductor structure	4x2xAWG26/7; S/FTP
Conductor structure signal line	7x 0.16 mm
AWG signal line	26
Wire diameter incl. insulation	1 mm
External cable diameter	6.50 mm ±0.3 mm
Outer sheath, material	LSZH
External sheath, color	green
Conductor material	Bare Cu litz wires
Material wire insulation	PE
Single wires, quantity	8
Single wire, cross section [AWG]	26

# NBC-R4OC/12,5-BC6A/R4OC-GR - Patch cable



1523707

<https://www.phoenixcontact.com/us/products/1523707>

Thickness, outer sheath	approx. 0.70 mm
Optical shield covering	70 %
Insulation resistance	$\geq 5000 \text{ M}\Omega \cdot \text{km}$
Loop resistance	$\leq 148.00 \text{ }\Omega/\text{km}$
Wave impedance	100 $\Omega$
Test voltage Core/Core	1000 V DC
Test voltage Core/Shield	1500.00 V DC
Minimum bending radius, fixed installation	8 x D
Smallest bending radius, fixed installation	52 mm
Near end crosstalk attenuation (NEXT)	75 dB (with 1 MHz)
	66.3 dB (at 4 MHz)
	60.3 dB (at 10 MHz)
	57.2 dB (at 16 MHz)
	55.8 dB (at 20 MHz)
	52.9 dB (at 31.25 MHz)
	48.4 dB (at 62.5 MHz)
	45.3 dB (at 100 MHz)
	40.8 dB (at 200 MHz)
	38.1 dB (at 300 MHz)
Power-summated near end crosstalk attenuation (PSNEXT)	36.3 dB (at 400 MHz)
	34.8 dB (at 500 MHz)
	72.3 dB (with 1 MHz)
	63.3 dB (at 4 MHz)
	58.8 dB (at 8 MHz)
	57.3 dB (at 10 MHz)
	54.2 dB (at 16 MHz)
	52.8 dB (at 20 MHz)
	51.3 dB (at 25 MHz)
	49.9 dB (at 31.25 MHz)
Return attenuation (RL)	45.4 dB (at 62.5 MHz)
	42.3 dB (at 100 MHz)
	37.8 dB (at 200 MHz)
	35.1 dB (at 300 MHz)
	33.3 dB (at 400 MHz)
	31.8 dB (at 500 MHz)
	20 dB (with 1 MHz)
	23 dB (at 4 MHz)
	24.5 dB (at 8 MHz)
	25 dB (at 10 MHz)
	25 dB (at 16 MHz)
	25 dB (at 20 MHz)
	24.2 dB (at 25 MHz)
	23.3 dB (at 31.25 MHz)
	20.7 dB (at 62.5 MHz)

# NBC-R4OC/12,5-BC6A/R4OC-GR - Patch cable



1523707

<https://www.phoenixcontact.com/us/products/1523707>

	19 dB (at 100 MHz)
	16.4 dB (at 200 MHz)
	15.6 dB (at 300 MHz)
	15.6 dB (at 400 MHz)
	15.6 dB (at 500 MHz)
Shield attenuation	3.1 dB (with 1 MHz)
	5.7 dB (at 4 MHz)
	8.9 dB (at 10 MHz)
	11.2 dB (at 16 MHz)
	12.6 dB (at 20 MHz)
	15.8 dB (at 31.25 MHz)
	22.5 dB (at 62.5 MHz)
	28.7 dB (at 100 MHz)
	41.4 dB (at 200 MHz)
	51.4 dB (at 300 MHz)
Halogen-free	complying with IEC 60754-1/2
Flame resistance	IEC 60332-1-2/IEC 60332-3-24/CM
Ambient temperature (operation)	-20 °C ... 80 °C (cable, fixed installation)
	-20 °C ... 80 °C (Cable, flexible installation)
Ambient temperature (installation)	0 °C ... 60 °C

## Environmental and real-life conditions

### Ambient conditions

Ambient temperature (operation)	-20 °C ... 80 °C
Ambient temperature (storage/transport)	0 °C ... 40 °C

## Standards and regulations

Flame resistance	IEC 60332-1-2
------------------	---------------

# NBC-R4OC/12,5-BC6A/R4OC-GR - Patch cable



1523707

<https://www.phoenixcontact.com/us/products/1523707>

## Approvals

🔗 To download certificates, visit the product detail page: <https://www.phoenixcontact.com/us/products/1523707>



**UL Listed**

Approval ID: E335024\_20210804



**cUL Listed**

Approval ID: E335024\_20210804

# NBC-R4OC/12,5-BC6A/R4OC-GR - Patch cable



1523707

<https://www.phoenixcontact.com/us/products/1523707>

## Classifications

### ECLASS

ECLASS-13.0	27060307
ECLASS-15.0	27060307

### ETIM

ETIM 9.0	EC001855
----------	----------

Environmental product compliance

EU RoHS	
Fulfills EU RoHS substance requirements	Yes, No exemptions
China RoHS	
Environment friendly use period (EFUP)	EFUP-E
	No hazardous substances above the limits
EU REACH SVHC	
REACH candidate substance (CAS No.)	No substance above 0.1 wt%



# NBC-R4OC/12,5-BC6A/R4OC-GR - Patch cable



1523707

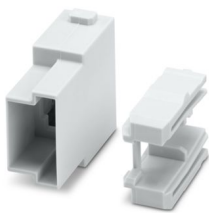
<https://www.phoenixcontact.com/us/products/1523707>

## Accessories

### HC-M-RJ45-AD-PC2-M - Contact insert module

1435214

<https://www.phoenixcontact.com/us/products/1435214>



Contact insert module, adapter for patch cables, the matching patch cables can be found in the accessories list

---

### NBC-R4OC/0,5-BC6A/R4OC - Patch cable

1227573

<https://www.phoenixcontact.com/us/products/1227573>



Patch cable, RJ45/IP20 straight on RJ45/IP20 straight, cable length: 0.5 m, number of positions: 8, connection cross section: AWG 26- 26, 4x2xAWG26/7; S/FTP, gray

## NBC-R4OC/12,5-BC6A/R4OC-GR - Patch cable

1523707

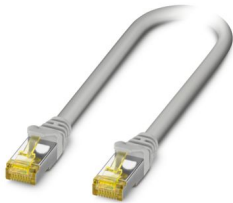
<https://www.phoenixcontact.com/us/products/1523707>



## NBC-R4OC/1,0-BC6A/R4OC - Patch cable

1227575

<https://www.phoenixcontact.com/us/products/1227575>



Patch cable, RJ45/IP20 straight on RJ45/IP20 straight, cable length: 1 m, number of positions: 8, connection cross section: AWG 26- 26, 4x2xAWG26/7; S/FTP, gray

---

## NBC-R4OC/1,5-BC6A/R4OC - Patch cable

1227578

<https://www.phoenixcontact.com/us/products/1227578>



Patch cable, RJ45/IP20 straight on RJ45/IP20 straight, cable length: 1.5 m, number of positions: 8, connection cross section: AWG 26- 26, 4x2xAWG26/7; S/FTP, gray

## NBC-R4OC/12,5-BC6A/R4OC-GR - Patch cable

1523707

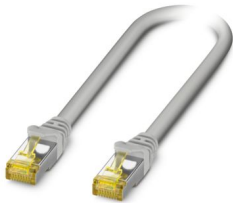
<https://www.phoenixcontact.com/us/products/1523707>



## NBC-R4OC/2,0-BC6A/R4OC - Patch cable

1227580

<https://www.phoenixcontact.com/us/products/1227580>



Patch cable, RJ45/IP20 straight on RJ45/IP20 straight, cable length: 2 m, number of positions: 8, connection cross section: AWG 26- 26, 4x2xAWG26/7; S/FTP, gray

---

## NBC-R4OC/3,0-BC6A/R4OC - Patch cable

1227581

<https://www.phoenixcontact.com/us/products/1227581>



Patch cable, RJ45/IP20 straight on RJ45/IP20 straight, cable length: 3 m, number of positions: 8, connection cross section: AWG 26- 26, 4x2xAWG26/7; S/FTP, gray

## NBC-R4OC/12,5-BC6A/R4OC-GR - Patch cable

1523707

<https://www.phoenixcontact.com/us/products/1523707>



## NBC-R4OC/5,0-BC6A/R4OC - Patch cable

1227583

<https://www.phoenixcontact.com/us/products/1227583>



Patch cable, RJ45/IP20 straight on RJ45/IP20 straight, cable length: 5 m, number of positions: 8, connection cross section: AWG 26- 26, 4x2xAWG26/7; S/FTP, gray

---

## NBC-R4OC/7,5-BC6A/R4OC - Patch cable

1227585

<https://www.phoenixcontact.com/us/products/1227585>



Patch cable, RJ45/IP20 straight on RJ45/IP20 straight, cable length: 7.5 m, number of positions: 8, connection cross section: AWG 26- 26, 4x2xAWG26/7; S/FTP, gray

## NBC-R4OC/12,5-BC6A/R4OC-GR - Patch cable

1523707

<https://www.phoenixcontact.com/us/products/1523707>



## NBC-R4OC/10,0-BC6A/R4OC - Patch cable

1227588

<https://www.phoenixcontact.com/us/products/1227588>



Patch cable, RJ45/IP20 straight on RJ45/IP20 straight, cable length: 10 m, number of positions: 8, connection cross section: AWG 26- 26, 4x2xAWG26/7; S/FTP, gray

---

## NBC-R4OC/0,3-BC5/R4OC - Patch cable

1227558

<https://www.phoenixcontact.com/us/products/1227558>



Patch cable, degree of protection: IP20, cable length: 0.3 m, number of positions: 8, CAT5, connection method: Pierce connection, connection cross section: AWG 26- 26, cable outlet: straight, Ethernet, 2x2xAWG26/7, S/UTP, gray

## NBC-R4OC/12,5-BC6A/R4OC-GR - Patch cable

1523707

<https://www.phoenixcontact.com/us/products/1523707>



## NBC-R4OC/0,5-BC5/R4OC - Patch cable

1227559

<https://www.phoenixcontact.com/us/products/1227559>



Patch cable, degree of protection: IP20, cable length: 0.5 m, number of positions: 8, CAT5, connection method: Pierce connection, connection cross section: AWG 26- 26, cable outlet: straight, Ethernet, 2x2xAWG26/7, S/UTP, gray

---

## NBC-R4OC/1,0-BC5/R4OC - Patch cable

1227560

<https://www.phoenixcontact.com/us/products/1227560>



Patch cable, degree of protection: IP20, cable length: 1 m, number of positions: 8, CAT5, connection method: Pierce connection, connection cross section: AWG 26- 26, cable outlet: straight, Ethernet, 2x2xAWG26/7, S/UTP, gray

## NBC-R4OC/12,5-BC6A/R4OC-GR - Patch cable

1523707

<https://www.phoenixcontact.com/us/products/1523707>



## NBC-R4OC/1,5-BC5/R4OC - Patch cable

1227561

<https://www.phoenixcontact.com/us/products/1227561>



Patch cable, degree of protection: IP20, cable length: 1.5 m, number of positions: 8, CAT5, connection method: Pierce connection, connection cross section: AWG 26- 26, cable outlet: straight, Ethernet, 2x2xAWG26/7, S/UTP, gray

---

## NBC-R4OC/2,0-BC5/R4OC - Patch cable

1227562

<https://www.phoenixcontact.com/us/products/1227562>



Patch cable, degree of protection: IP20, cable length: 2 m, number of positions: 8, CAT5, connection method: Pierce connection, connection cross section: AWG 26- 26, cable outlet: straight, Ethernet, 2x2xAWG26/7, S/UTP, gray

## NBC-R4OC/12,5-BC6A/R4OC-GR - Patch cable

1523707

<https://www.phoenixcontact.com/us/products/1523707>



## NBC-R4OC/3,0-BC5/R4OC - Patch cable

1227563

<https://www.phoenixcontact.com/us/products/1227563>



Patch cable, degree of protection: IP20, cable length: 3 m, number of positions: 8, CAT5, connection method: Pierce connection, connection cross section: AWG 26- 26, cable outlet: straight, Ethernet, 2x2xAWG26/7, S/UTP, gray

---

## NBC-R4OC/5,0-BC5/R4OC - Patch cable

1227564

<https://www.phoenixcontact.com/us/products/1227564>



Patch cable, degree of protection: IP20, cable length: 5 m, number of positions: 8, CAT5, connection method: Pierce connection, connection cross section: AWG 26- 26, cable outlet: straight, Ethernet, 2x2xAWG26/7, S/UTP, gray



## NBC-R4OC/12,5-BC6A/R4OC-GR - Patch cable

1523707

<https://www.phoenixcontact.com/us/products/1523707>



## NBC-R4OC/7,5-BC5/R4OC - Patch cable

1227565

<https://www.phoenixcontact.com/us/products/1227565>



Patch cable, degree of protection: IP20, cable length: 7.5 m, number of positions: 8, CAT5, connection method: Pierce connection, connection cross section: AWG 26- 26, cable outlet: straight, Ethernet, 2x2xAWG26/7, S/UTP, gray

---

## NBC-R4OC/10,0-BC5/R4OC - Patch cable

1227566

<https://www.phoenixcontact.com/us/products/1227566>



Patch cable, degree of protection: IP20, cable length: 10 m, number of positions: 8, CAT5, connection method: Pierce connection, connection cross section: AWG 26- 26, cable outlet: straight, Ethernet, 2x2xAWG26/7, S/UTP, gray

---

Phoenix Contact 2025 © - all rights reserved  
<https://www.phoenixcontact.com>

Phoenix Contact USA  
586 Fulling Mill Road  
Middletown, PA 17057, United States  
(+717) 944-1300  
[info@phoenixcon.com](mailto:info@phoenixcon.com)