

1316312  
<https://www.phoenixcontact.com/us/products/1316312>

Please be informed that the data shown in this PDF document is generated from our online catalog. Please find the complete data in the user documentation. Our general terms of use for downloads are valid.



Surge protection with filter function for a 2-wire floating signal circuit, e.g., 0(4) ... 20 mA current loop, HART-compatible.

Your advantages

- Space-saving and cost-saving with a narrow overall width of just 6 mm
- Quick and tool-free installation of surge protective devices, thanks to Push-in connection technology
- Finding the right product for all possible requirements in MCR applications is easy, thanks to the complete range of products with customized features

Commercial data

Item number	1316312
Packing unit	1 pc
Minimum order quantity	1 pc
Sales key	CL23
Product key	CLC142
GTIN	4063151598587
Weight per piece (including packing)	34.7 g
Weight per piece (excluding packing)	34.7 g
Customs tariff number	85363010
Country of origin	DE

# TTC-6-SFP-24AC-PT - EMC filter surge protection device



1316312

<https://www.phoenixcontact.com/us/products/1316312>

## Technical data

### Product properties

Product type	EMC filters
Product family	TERMITRAB complete
IEC test classification	C1
	C3
Type	DIN rail module, one-piece

### Insulation characteristics

Overvoltage category	III
Pollution degree	2

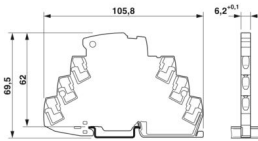
### Electrical properties

Nominal voltage $U_N$	24 V DC
-----------------------	---------

### Connection data

Connection method	Push-in connection
Conductor cross-section flexible	0.2 mm <sup>2</sup> ... 2.5 mm <sup>2</sup>
Conductor cross-section rigid	0.2 mm <sup>2</sup> ... 2.5 mm <sup>2</sup>
Conductor cross-section AWG	24 ... 14

### Dimensions

Dimensional drawing	
Width	6.2 mm +0.1 mm
Height	105.8 mm
Depth	69.5 mm (incl. DIN rail 7.5 mm)

### Material specifications

Color	gray (RAL 7042)
	light gray (RAL 7035)
Flammability rating according to UL 94	V-0
Insulating material	PBT
Housing material	PBT

### Mechanical properties

#### Mechanical data

Open side panel	No
-----------------	----

# TTC-6-SFP-24AC-PT - EMC filter surge protection device



1316312

<https://www.phoenixcontact.com/us/products/1316312>

## Protective circuit

Maximum continuous operating voltage $U_C$	38 V DC
	30 V AC
Rated current	500 mA
Operating effective current $I_C$ at $U_C$	$\leq 0.1 \mu A$
Protective conductor current $I_{PE}$	$\leq 10 \mu A$
Nominal discharge current $I_n$ (8/20) $\mu s$ (line-ground)	350 A
Total discharge current $I_{Total}$ (8/20) $\mu s$	700 A
Voltage protection level $U_p$ (line-earth)	$\leq 80 V$ (C1 - 0.5 kV / 250 A)
	$\leq 80 V$ (C3 - 20 A)
Response time $t_A$ (line-earth)	$\leq 25 ns$
Input attenuation aE, sym.	typ. 0.3 dB ( $\leq 50 kHz / 150 \Omega$ )
Input attenuation aE, asym.	typ. 0.3 dB ( $\leq 30 kHz / 50 \Omega$ )
Cut-off frequency $f_g$ (3 dB), sym. in 50 $\Omega$ system	typ. 85 kHz
Cut-off frequency $f_g$ (3 dB), sym. in 150 $\Omega$ system	typ. 95 kHz
Cut-off frequency $f_g$ (3 dB), asym. (PE) in 50 $\Omega$ system	typ. 100 kHz
Capacity (Core-Earth)	50 nF ( $\pm 30 \%$ )
Inductivity in series	100 $\mu H$ ( $\pm 30 \%$ )
Resistance per path	typ. 0.35 $\Omega$
Surge protection fault message	none
Max. required back-up fuse	500 mA (FF)
Impulse durability (line-line)	C3 - 20 A
Impulse durability (line-earth)	C1 - 0.5 kV / 250 A
	C3 - 20 A

## Environmental and real-life conditions

### Ambient conditions

Degree of protection	IP20
Ambient temperature (operation)	-40 °C ... 85 °C
Ambient temperature (storage/transport)	-40 °C ... 85 °C
Altitude	$\leq 4000 m$ (amsl)
Permissible humidity (operation)	5 % ... 95 %

## Standards and regulations

Standards/specifications	EN 60939-1
Note	2011
Standards/specifications	EN 60939-2
Note	2006
Standards/specifications	EN 61643-21
Note	2001 + A1:2009 + A2:2013
Standards/specifications	IEC 61643-21
Note	2000 + corrigendum 2001 + A1:2008, modified + A2:2012

# TTC-6-SFP-24AC-PT - EMC filter surge protection device



1316312

<https://www.phoenixcontact.com/us/products/1316312>

## Mounting

Mounting type	DIN rail: TH 35 - 7.5 mm
---------------	--------------------------

# TTC-6-SFP-24AC-PT - EMC filter surge protection device

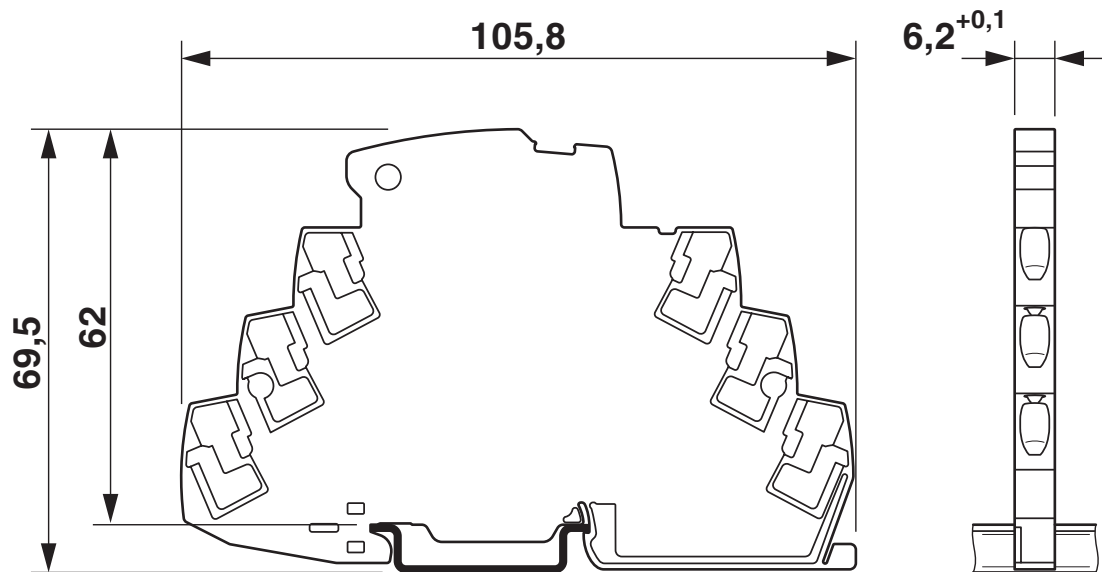


1316312

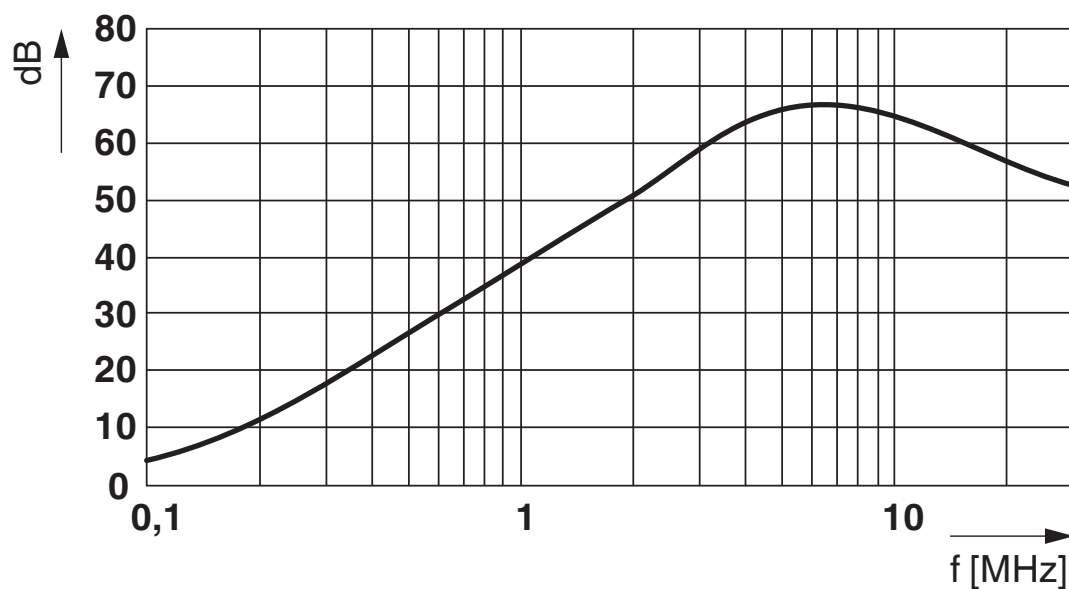
<https://www.phoenixcontact.com/us/products/1316312>

## Drawings

Dimensional drawing



Diagram



Frequency-response curve symmetrical (50 ohms)

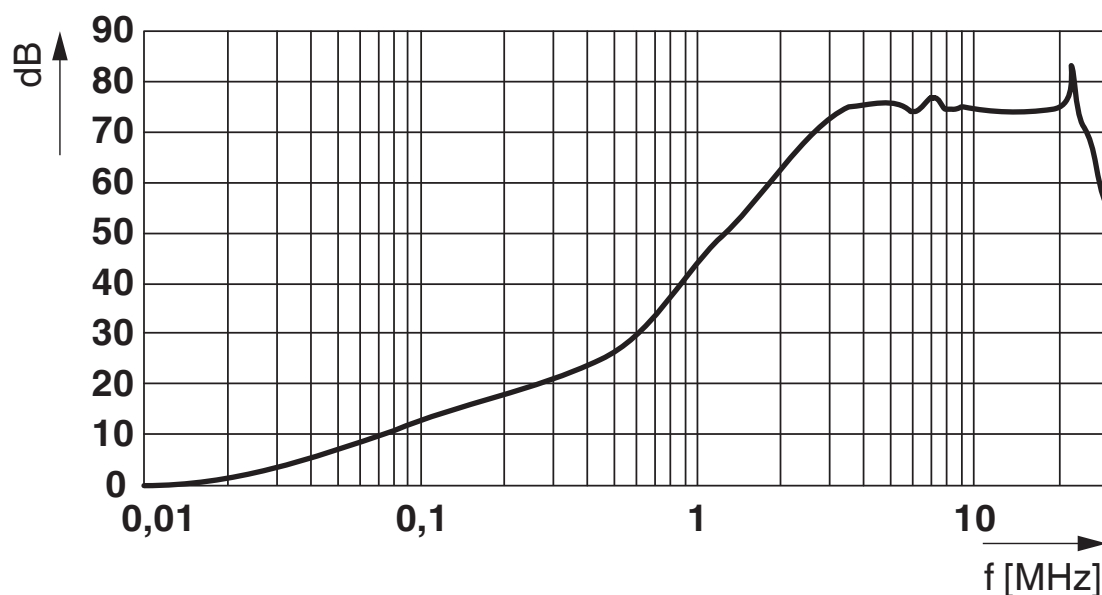
# TTC-6-SFP-24AC-PT - EMC filter surge protection device



1316312

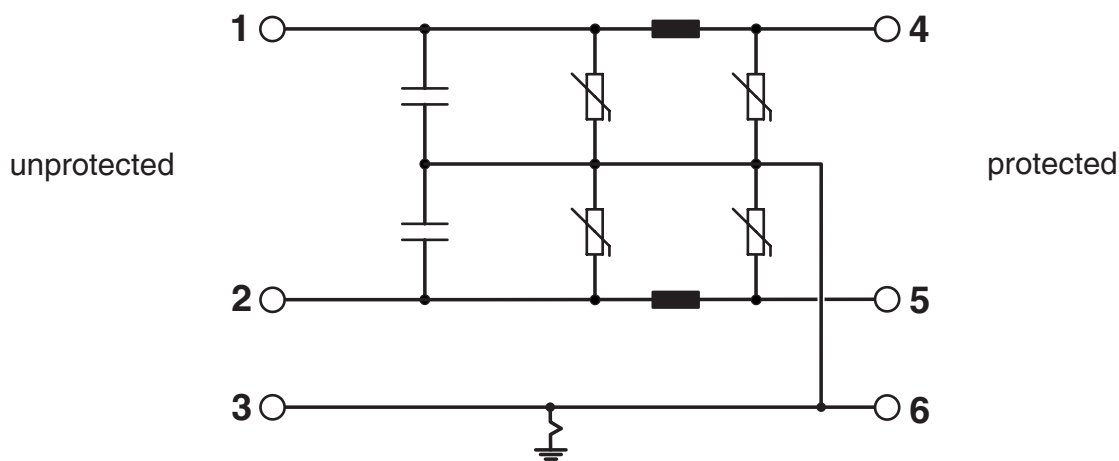
<https://www.phoenixcontact.com/us/products/1316312>

Diagram



Frequency-response curve asymmetrical (150 ohms)

Circuit diagram



# TTC-6-SFP-24AC-PT - EMC filter surge protection device



1316312

<https://www.phoenixcontact.com/us/products/1316312>

## Approvals

To download certificates, visit the product detail page: <https://www.phoenixcontact.com/us/products/1316312>



**DNV GL**

Approval ID: TAE000027G



**UL Listed**

Approval ID: FILE E 138168

# TTC-6-SFP-24AC-PT - EMC filter surge protection device



1316312

<https://www.phoenixcontact.com/us/products/1316312>

## Classifications

### ECLASS

ECLASS-13.0	27420290
ECLASS-15.0	27420290

### ETIM

ETIM 9.0	EC002564
----------	----------

### UNSPSC

UNSPSC 21.0	39121600
-------------	----------



# TTC-6-SFP-24AC-PT - EMC filter surge protection device



1316312

<https://www.phoenixcontact.com/us/products/1316312>

## Environmental product compliance

### EU RoHS

Fulfills EU RoHS substance requirements	Yes, No exemptions
---	--------------------

### China RoHS

Environment friendly use period (EFUP)	EFUP-E
	No hazardous substances above the limits

### EU REACH SVHC

REACH candidate substance (CAS No.)	No substance above 0.1 wt%
-------------------------------------	----------------------------

Phoenix Contact 2025 © - all rights reserved  
<https://www.phoenixcontact.com>

Phoenix Contact USA  
586 Fulling Mill Road  
Middletown, PA 17057, United States  
(+717) 944-1300  
[info@phoenixcon.com](mailto:info@phoenixcon.com)