

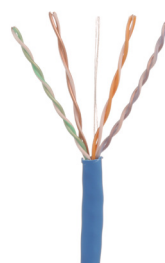
TX6™ Category 6 U/UTP Copper Cable

North America

PANDUIT®
SPECIFICATION SHEET

SPECIFICATIONS

Category 6 cable shall meet ANSI/TIA-568.2-E Category 6 component Standard. The conductors shall be 24 AWG construction with FEP/polyolefin insulation. The copper conductors shall be twisted in pairs and covered by a low smoke, flame-retardant (CMP) PVC jacket.



TECHNICAL INFORMATION

Electrical performance:	Certified channel performance in a 4-connector configuration up to 100m and meets ANSI/TIA-568.2-E Category 6 Standard at swept frequencies up to 250MHz Certified component performance up to 100m and meets the component requirements of ANSI/TIA-568.2-E Category 6 component Standard at swept frequencies up to 250 MHz
Conductors/insulators:	24 AWG solid copper covered by FEP/polyolefin insulation
Insulation diameter:	0.033 in. – 0.046 in. (0.83mm – 1.17mm)
Flame rating:	NFPA 262 and CSA FT-6
Installation tension:	25 lbf (110N) maximum
PoE compliance:	Meets IEEE 802.3af, IEEE 802.3at and IEEE 802.3bt for PoE applications
Temperature rating:	32°F to 122°F (0°C to 50°C) during installation -4°F to 167°F (-20°C to 75°C) during operation
Cable jacket:	Low smoke, flame-retardant PVC
Cable diameter:	0.215 in. (5.4mm) nominal
Cable weight:	28 lbs./1000 ft. (13 kg/305m)
Packaging:	1000 ft. (305m) in an easy payout carton Package tested to ISTA Procedure 1A

KEY FEATURES AND BENEFITS

Third party tested:	Cable has been tested as part of the Category 6 U/UTP Copper Cabling System by an independent laboratory and complies with the electrical channel requirements of the following Standard: ANSI/TIA-568.2-E Category 6
Guaranteed channel performance above the standards:	Industry leading guaranteed channel performance exceeding the TIA/ISO Standards with headroom guaranteed
Descending length cable markings:	Easy identification of remaining cable reduces installation cable markings time and cable scrap
Tested beyond the standards:	Cable has been characterized to 550 MHz, 300 MHz above the standard
Extended temperature range:	Allows operation in 75°C (167°F) ambient environment providing error-free performance in high-density cabinets and large cable bundles running PoE+ or PoE++ applications
Reelex™ packaging:	Compact carton ensures proper performance and provides quick installation

TX6 Category 6 U/UTP Copper Cable

CMP: PUP6C04**-WZ

**For standard cable colors, add suffix BU(Blue), WH (White), RD (Red), OR (Orange), YL (Yellow), GR (Green), VL (Violet), IG (International Gray), or BL (Black).

Visit panduit.com for connectivity components.

TX6™ Category 6 U/UTP Copper Cable

APPLICATIONS

Interoperable and backward compatible, the TX6 U/UTP Cabling System provides design flexibility to protect network investments well into the future. With certified performance to the ANSI/TIA-568.2-E Category 6 and ISO 11801 Class E Standards, this system will support the following applications:

- Ethernet 10BASE-T, 100BASE-T (Fast Ethernet), 1000BASE-T (Gigabit Ethernet),10GBASE-T (10 Gigabit Ethernet over limited distances as specified in the industry10GBASE-T standards)
- 155 Mb/s ATM, 622 Mb/s ATM, 1.2 Gb/s ATM
- Token Ring 4/16

ADDITIONAL SPECIFICATIONS

Mechanical Test	
Ultimate breaking strength:	> 90 lbf (400 N)
Minimum bend radius:	4 x cable diameter
Electrical Test	
Nominal velocity of propagation (NVP):	70% nominal
Operating voltage, maximum:	80 V

ENGINEERING DRAWING

